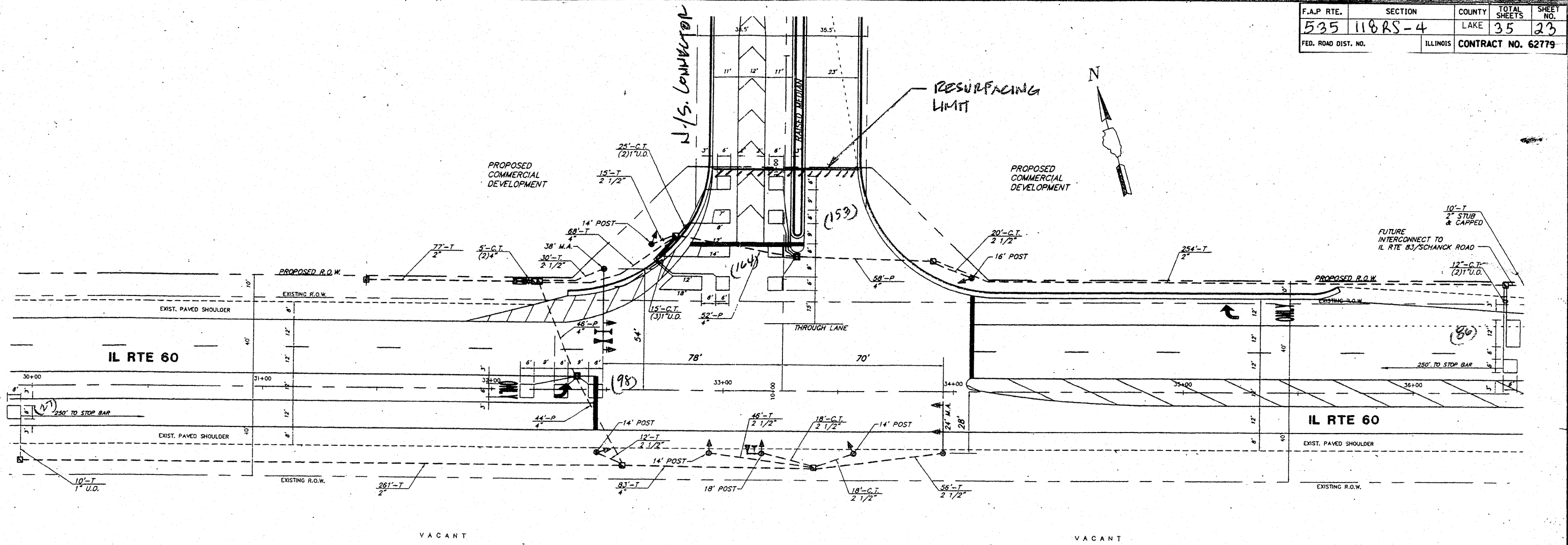


F.A.P. RTE.	SECTION	COUNTY	TOTAL SHEETS	SHEET NO.
535	118RS-4	LAKE	35	23
FED. ROAD DIST. NO.	ILLINOIS	CONTRACT NO. 62779		



**TRAFFIC SIGNAL LEGEND**

	PROPOSED	EXISTING		PROPOSED	EXISTING
CONTROLLER	[Symbol]	[Symbol]	PEDESTRIAN PUSHBUTTON DETECTOR	[Symbol]	[Symbol]
SERVICE INSTALLATION	[Symbol]	[Symbol]	DETECTOR LOOP	[Symbol]	[Symbol]
SIGNAL HEAD AND POST	[Symbol]	[Symbol]	CAST IRON JUNCTION BOX	[Symbol]	[Symbol]
SIGNAL HEAD AND BACKPLATE	[Symbol]	[Symbol]	EMERGENCY VEHICLE SYSTEM DETECTOR	[Symbol]	[Symbol]
SIGNAL HEAD, PEDESTRIAN	[Symbol]	[Symbol]	CONFIRMATION BEACON	[Symbol]	[Symbol]
SIGNAL POST	[Symbol]	[Symbol]	SIGNAL HEAD OPTICALLY PROGRAMMED	[Symbol]	[Symbol]
MAST ARM ASSEMBLY AND POLE, STEEL	[Symbol]	[Symbol]	CONDUIT SPLICE	[Symbol]	[Symbol]
MAST ARM ASSEMBLY AND POLE, ALUMINUM	[Symbol]	[Symbol]	WOOD POLE	[Symbol]	[Symbol]
COMBINATION MAST ARM ASSEMBLY AND POLE, STEEL WITH LUMINAIRE	[Symbol]	[Symbol]	RACEWAY FOR MAGNETIC DETECTOR, TYPE I OR TYPE II	[Symbol]	[Symbol]
UNIT DUCT	[Symbol]	[Symbol]	VEHICLE DETECTOR, NON COMPENSATED MAGNETIC TYPE	[Symbol]	[Symbol]
COMMON TRENCH	[Symbol]	[Symbol]	RAILROAD CONTROL CABINET	[Symbol]	[Symbol]
HANDHOLE	[Symbol]	[Symbol]	TELEPHONE CONNECTION	[Symbol]	[Symbol]
HEAVY DUTY HANDHOLE	[Symbol]	[Symbol]	ILLUMINATED SIGN "NO LEFT TURN"	[Symbol]	[Symbol]
DOUBLE HANDHOLE	[Symbol]	[Symbol]	ILLUMINATED SIGN "NO RIGHT TURN"	[Symbol]	[Symbol]
G.S. CONDUIT IN TRENCH (T) OR PUSHED (P)	[Symbol]	[Symbol]			

**REPLACE ALL DETECTOR LOOPS AS SHOWN**  
(WITHIN THE RESURFACING LIMITS)

CODE NO.	QUANTITY	UNIT	ITEM
82500600	528	Foot	Detector Loop Replacement

REVISIONS	
NAME	DATE

**NOTE:**  
THIS PLAN IS FOR THE PURPOSE OF REPLACING THE DETECTOR LOOPS ONLY. ALL OTHER INFORMATION SHOWN IS NOT RELATED AND WILL BE DISREGARDED.

ILLINOIS DEPARTMENT OF TRANSPORTATION  
**DETECTOR LOOP REPLACEMENT**  
ILL. RTE. 60 @ N./S. CONNECTION  
SCALE: NONE  
DATE: JAN. 2009  
DRAWN BY: JHE  
DESIGNED BY: JHE  
CHECKED BY: DAD