



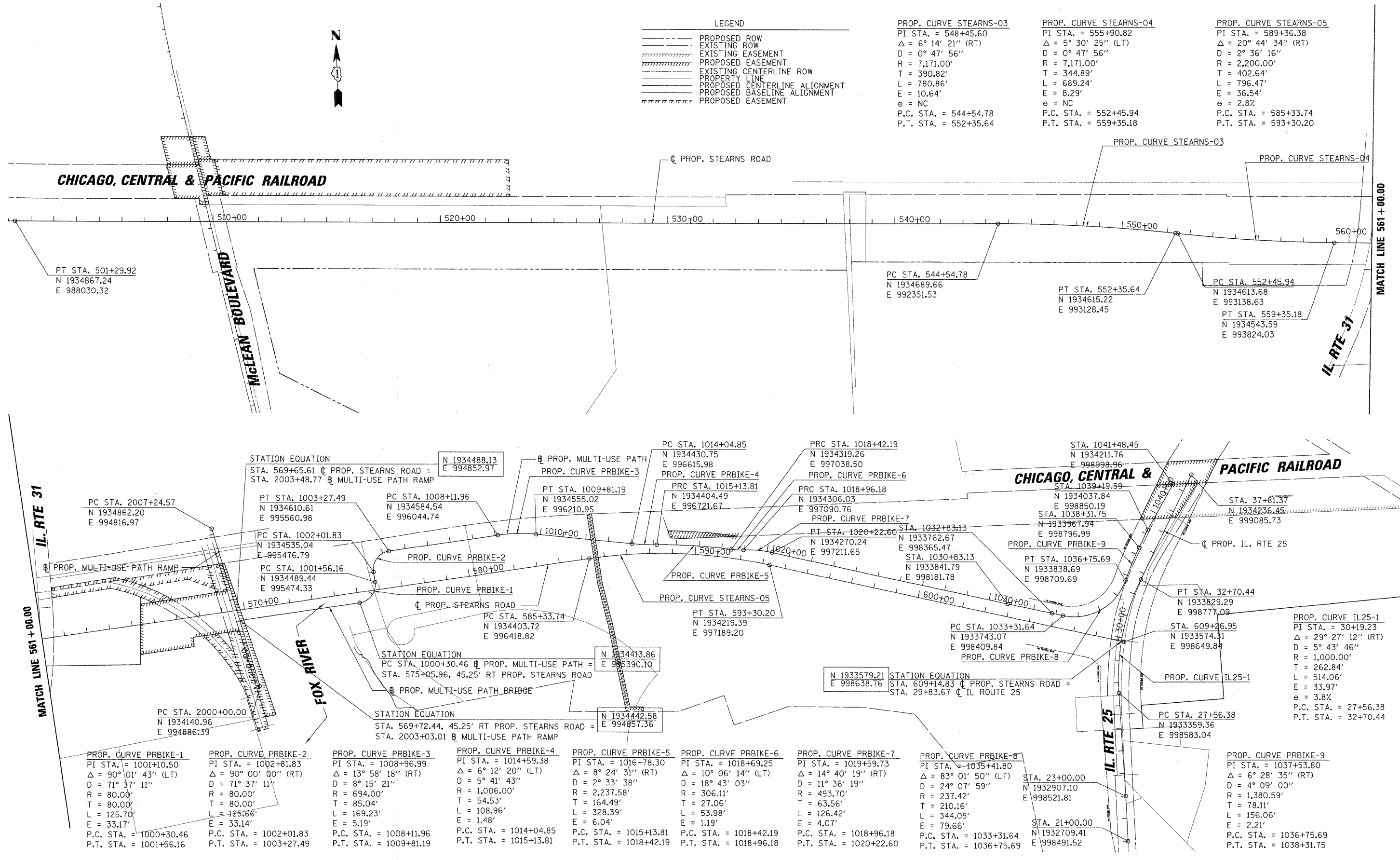
LEGEND

-----	PROPOSED ROW
-----	EXISTING ROW
-----	EXISTING EASEMENT
-----	PROPOSED EASEMENT
-----	EXISTING CENTERLINE ROW
-----	PROPERTY LINE
-----	PROPOSED CENTERLINE ALIGNMENT
-----	PROPOSED BASELINE ALIGNMENT
-----	PROPOSED EASEMENT

PROP. CURVE STEARNS-03
 PI STA. = 548+45.60
 $\Delta = 6^\circ 14' 21''$ (RT)
 $D = 0^\circ 47' 56''$
 $R = 7,171.00'$
 $T = 390.82'$
 $L = 780.86'$
 $E = 10.64'$
 $e = NC$
 P.C. STA. = 544+54.78
 P.T. STA. = 552+35.64

PROP. CURVE STEARNS-04
 PI STA. = 555+90.82
 $\Delta = 5^\circ 30' 25''$ (LT)
 $D = 0^\circ 47' 56''$
 $R = 7,171.00'$
 $T = 344.89'$
 $L = 689.24'$
 $E = 8.29'$
 $e = NC$
 P.C. STA. = 552+45.94
 P.T. STA. = 559+35.18

PROP. CURVE STEARNS-05
 PI STA. = 589+36.38
 $\Delta = 20^\circ 44' 34''$ (RT)
 $D = 2^\circ 36' 16''$
 $R = 2,200.00'$
 $T = 402.64'$
 $L = 796.47'$
 $E = 36.54'$
 $e = 2.8\%$
 P.C. STA. = 585+33.74
 P.T. STA. = 593+30.20



PROP. CURVE PRBIKE-1 PI STA. = 1001+10.50 $\Delta = 90^\circ 01' 43''$ (LT) $D = 71^\circ 37' 11''$ $R = 80.00'$ $T = 80.00'$ $L = 125.70'$ $E = 33.17'$ P.C. STA. = 1000+30.46 P.T. STA. = 1001+56.16	PROP. CURVE PRBIKE-2 PI STA. = 1002+81.83 $\Delta = 90^\circ 00' 00''$ (RT) $D = 71^\circ 37' 11''$ $R = 80.00'$ $T = 80.00'$ $L = 125.66'$ $E = 33.14'$ P.C. STA. = 1002+01.83 P.T. STA. = 1003+27.49	PROP. CURVE PRBIKE-3 PI STA. = 1008+96.99 $\Delta = 13^\circ 58' 18''$ (RT) $D = 8^\circ 15' 21''$ $R = 694.00'$ $T = 85.04'$ $L = 169.23'$ $E = 5.19'$ P.C. STA. = 1008+11.96 P.T. STA. = 1009+81.19	PROP. CURVE PRBIKE-4 PI STA. = 1014+59.38 $\Delta = 6^\circ 12' 20''$ (LT) $D = 5^\circ 41' 43''$ $R = 1,006.00'$ $T = 164.49'$ $L = 108.96'$ $E = 1.48'$ P.C. STA. = 1014+04.85 P.T. STA. = 1015+13.81	PROP. CURVE PRBIKE-5 PI STA. = 1016+78.30 $\Delta = 8^\circ 24' 31''$ (RT) $D = 2^\circ 33' 38''$ $R = 2,237.58'$ $T = 164.49'$ $L = 328.39'$ $E = 6.04'$ P.C. STA. = 1015+13.81 P.T. STA. = 1018+42.19	PROP. CURVE PRBIKE-6 PI STA. = 1018+69.25 $\Delta = 10^\circ 06' 14''$ (LT) $D = 18^\circ 43' 03''$ $R = 306.11'$ $T = 27.06'$ $L = 53.98'$ $E = 1.19'$ P.C. STA. = 1018+42.19 P.T. STA. = 1018+96.18	PROP. CURVE PRBIKE-7 PI STA. = 1019+59.73 $\Delta = 14^\circ 40' 19''$ (RT) $D = 11^\circ 36' 19''$ $R = 493.70'$ $T = 63.56'$ $L = 126.42'$ $E = 4.07'$ P.C. STA. = 1018+96.18 P.T. STA. = 1020+22.60	PROP. CURVE PRBIKE-8 PI STA. = 1035+41.80 $\Delta = 83^\circ 01' 50''$ (LT) $D = 24^\circ 07' 59''$ $R = 237.42'$ $T = 210.16'$ $L = 344.05'$ $E = 79.66'$ P.C. STA. = 1033+31.64 P.T. STA. = 1036+75.69	PROP. CURVE PRBIKE-9 PI STA. = 1037+53.80 $\Delta = 6^\circ 28' 35''$ (RT) $D = 4^\circ 09' 00''$ $R = 1,380.59'$ $T = 78.11'$ $L = 156.06'$ $E = 2.21'$ P.C. STA. = 1036+75.69 P.T. STA. = 1038+31.75
--	--	---	---	---	---	--	--	--

FILE NAME = BNH_07093_01.SHT

USER NAME = GTINE	DESIGNED <i>BDG</i>	REVISED -
PLOT SCALE = 200'	DRAWN <i>MCW</i>	REVISED -
PLOT DATE = 2/10/2009	CHECKED <i>BDG</i>	REVISED -
	DATE <i>01/16/09</i>	REVISED -

**STATE OF ILLINOIS
DEPARTMENT OF TRANSPORTATION**

ALIGNMENT, TIES & BENCHMARKS

SCALE: 1"=200' SHEET NO. 1 OF 2 SHEETS STA. 501+29.92 TO STA. 609+26.95

F.A.P. RTE.	SECTION	COUNTY	TOTAL SHEETS	SHEET NO.
361	06-00214-20-BR	KANE	320	26
CONTRACT NO. 63075				
FED. ROAD DIST. NO. 1 ILLINOIS FED. AID PROJECT				