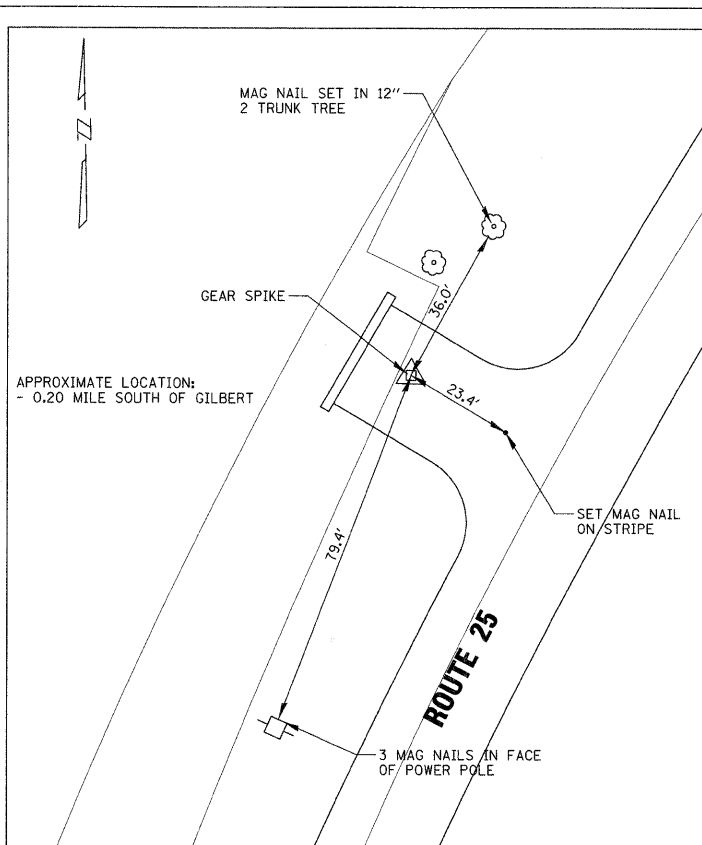
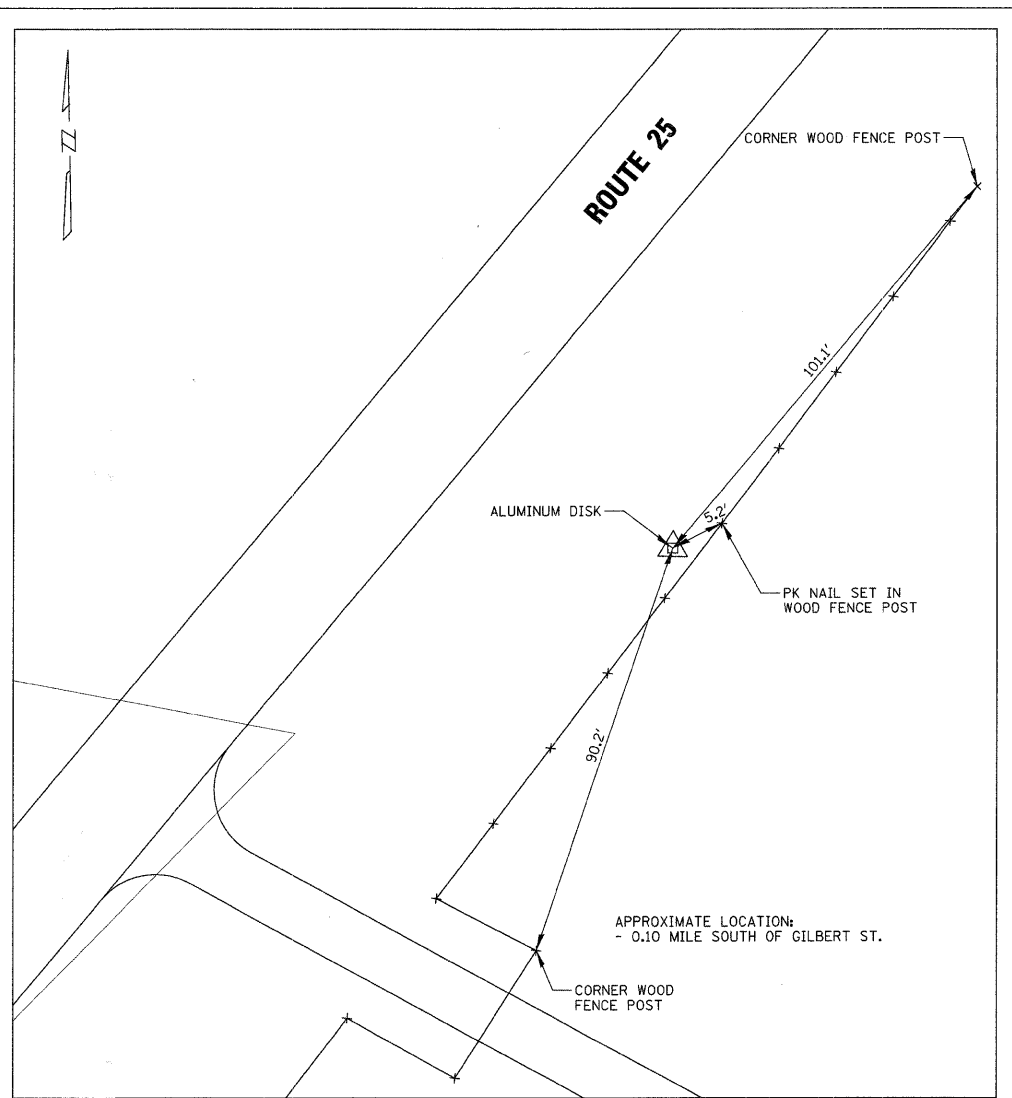


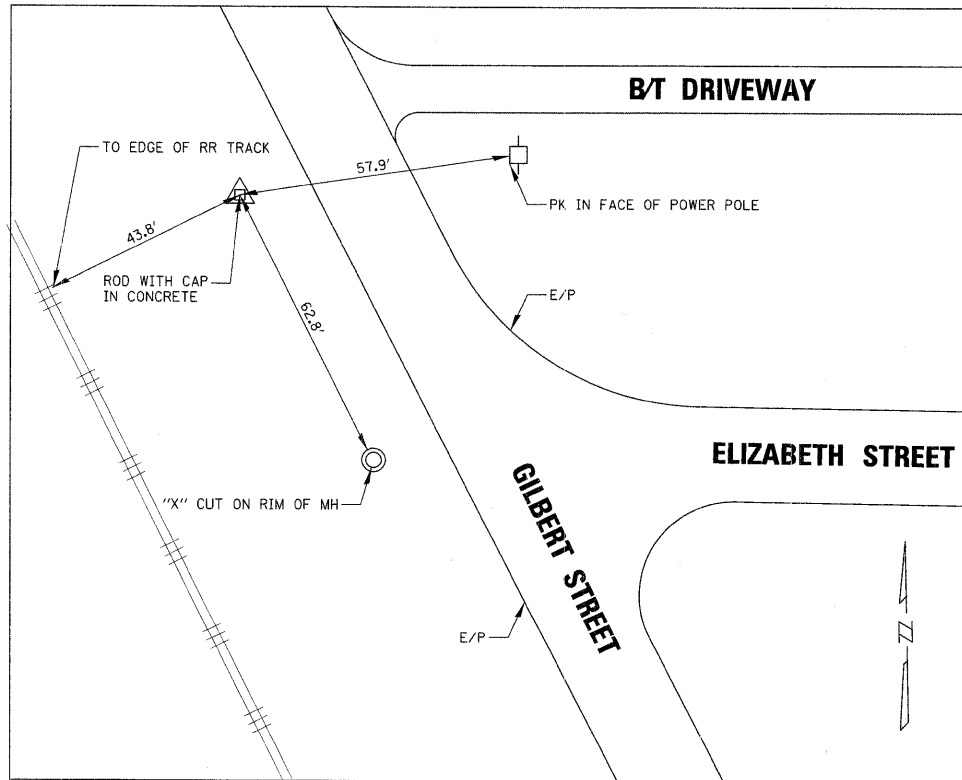
PRIMARY CONTROL POINT 2
 1" = 20'



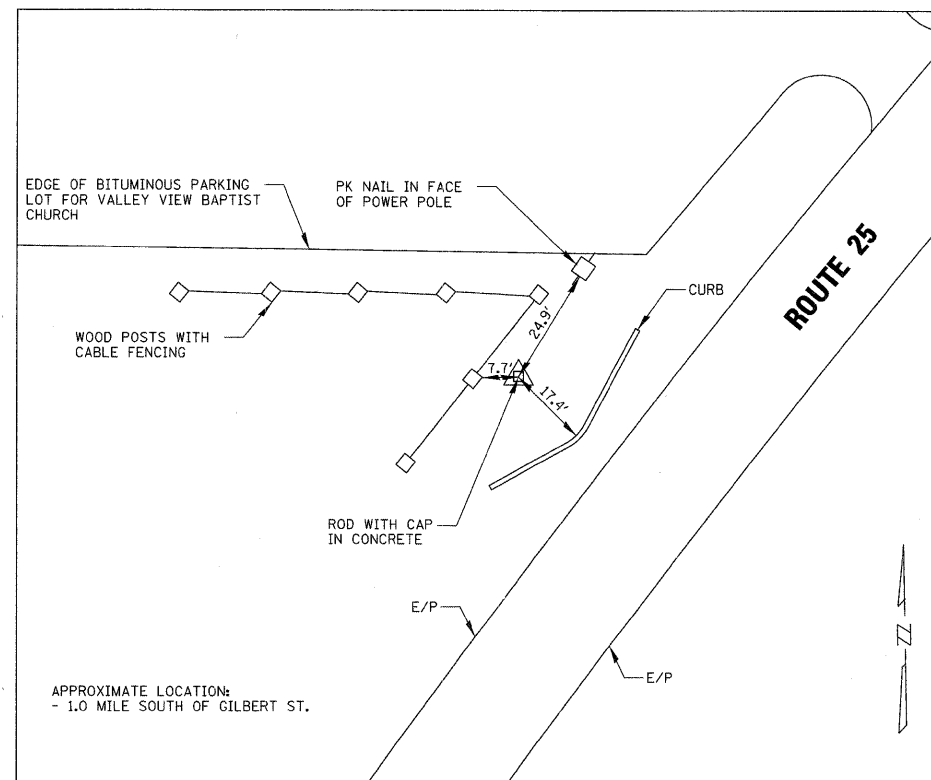
SECONDARY CONTROL POINT 49000
 1" = 20' ON SITE



SECONDARY CONTROL POINT 19
 1" = 20' ON SITE



PRIMARY CONTROL POINT 9
 1" = 20'



PRIMARY CONTROL POINT 8
 1" = 20'

ELEVATION BENCHMARKS DATUM: NGVD OF 1929 (FEMA)		
NO.	DESCRIPTION	ELEV.
BM 19	"ALUMINUM DISK" SET IN CONCRETE, 0.10± MILE SOUTH OF GILBERT STREET ON EAST SIDE OF ROUTE 25 4' ± FROM SPLIT RAIL FENCE.	724.23
BM 22	"CHISELED BOX CUT" SET AT THE TOP OF CONCRETE BRIDGE HEADWALL, AT THE NORTHEAST CORNER OF BRIDGE AT THE SOUTHEAST CORNER OF STEARNS ROAD AND DUNHAM ROAD.	767.36
OSBM 1	SQUARE CUT ON NORTHWEST CORNER OF SOUTHERLY ABUTMENT OF ILLINOIS PRAIRIE PATH BRIDGE OVER CHICAGO, CENTRAL & PACIFIC RAIL LINES	763.43
OSBM 133	MINI RAILROAD SPIKE, WEST FACE OF POWER POLE WITH LIGHT AT WESTERLY SIDE OF INTERSECTION OF ROUTE 25 & GILBERT	732.77
OSBM 134	FOUND ALUMINUM DISK IN CONCRETE 40' ± NORTHEASTERLY OF EDGE OF PAVEMENT OF GILBERT ROAD, 200' ± NORTHERLY OF 3RD BIT ENTRANCE NORTHERLY OF ROUTE 25	739.08
OSBM 135	MINI RAILROAD SPIKE IN POLE ON EAST SIDE OF DUNHAM ROAD IN 2ND POLE SOUTH OF 6N879	756.18
RM12	A STANDARD U.S. GEOLOGICAL SURVEY DISK SET IN THE SOUTH CONCRETE HEADWALL OF A BRIDGE LOCATED ON STATE ROUTE 31, ABOUT 130 FEET WEST OF MCLEAN BOULEVARD	710.37

HORIZONTAL CONTROL			
NO.	NORTHING	EASTING	DESCRIPTION
CP-2	1931338.8282	985992.2552	STEEL ROD IN SLEEVE
CP-8	1930214.7179	996827.3209	ROD WITH C.B.B. CAP IN CONCRETE
CP-9	1938609.0557	996621.7024	ROD WITH C.B.B. CAP IN CONCRETE
CP-19	1934105.243	999061.444	ALUMINUM DISK
CP-49000	1933736.567	998681.869	GEAR SPIKE

NAD '83 - (GRID COORDINATES) AVG. COMBINED SCALE FACTOR = 0.99994303889

FILE NAME = BNH-L070793_02.SHT	USER NAME = MWORMAN	DESIGNED <i>BDG</i>	REVISED -
		DRAWN <i>MCW</i>	REVISED -
		CHECKED <i>BDG</i>	REVISED -
		DATE <i>01/16/09</i>	REVISED -

**STATE OF ILLINOIS
 DEPARTMENT OF TRANSPORTATION**

ALIGNMENT, TIES & BENCHMARKS

SCALE: NTS SHEET NO. 2 OF 2 SHEETS STA. TO STA.

F.A.P. RTE.	SECTION	COUNTY	TOTAL SHEETS	SHEET NO.
361	06-00214-20-BR	KANE	320	27
FED. ROAD DIST. NO. 1 ILLINOIS FED. AID PROJECT			CONTRACT NO. 63075	