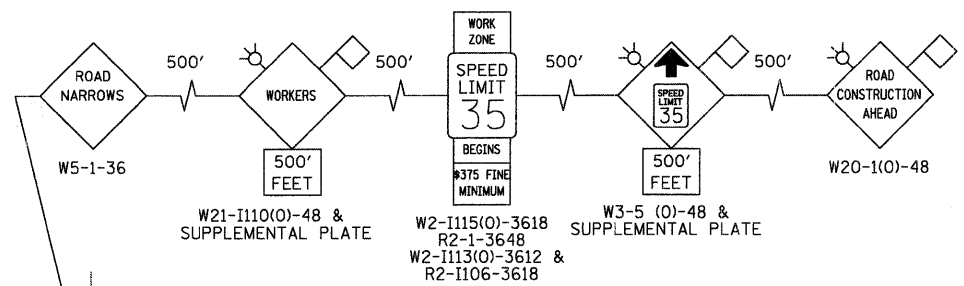
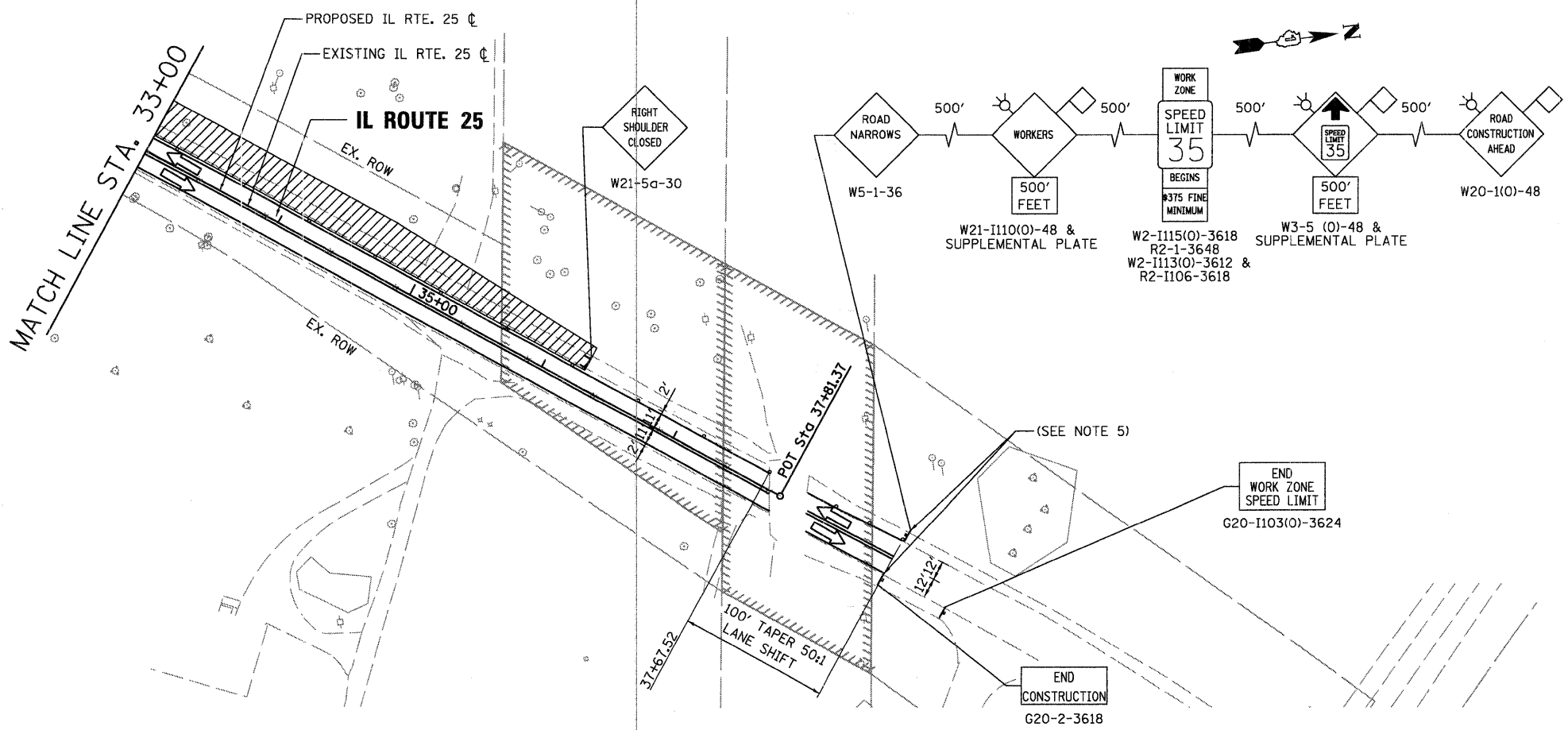


- NOTES:
- STANDARD 701006 TO BE UTILIZED IN STAGE 1
 - ALL MAINTENANCE OF TRAFFIC SIGNS USED IN STAGE 1 TO REMAIN FOR STAGE 2 ALONG IL ROUTE 25.
 - ALL SIGNS SHALL BE POST OR SKID MOUNTED.
 - REMOVE ALL CONFLICTING SIGNS AND PAVEMENT MARKINGS.
 - THE CONTRACTOR SHALL COORDINATE CONSTRUCTION SIGNS INSTALLATION AND TEMPORARY LANES DELINEATION WITH ADJACENT IL RTE. 25 CONSTRUCTION OPERATIONS TO THE NORTH OF PROJECT LIMITS.



- LEGEND**
- DRUMS WITH BI-DIRECTIONAL STEADY BURN LIGHTS @ 50' CENTERS, 25' CENTERS ALONG TAPERS AND 12' CENTERS ALONG RADIUS RETURNS
 - ➔ TRAFFIC DIRECTION
 - ▬ DOUBLE VERTICAL PANELS (BACK TO BACK) WITH BI-DIRECTIONAL STEADY BURNING LIGHTS
 - ⊥ TYPE III BARRICADES WITH FLASHING LIGHTS
 - ▨ WORK ZONE
 - ▩ TEMPORARY PAVEMENT
 - ➡ ARROW BOARD
 - ▬ TEMP. CONCRETE BARRIER

Baker
Baker Engineering, Inc.

FILE NAME = IL25_mot@1.mot	USER NAME = GYSherman	DESIGNED - GS	REVISED -	STATE OF ILLINOIS DEPARTMENT OF TRANSPORTATION	IL ROUTE 25 MAINTENANCE OF TRAFFIC STAGE 1 PLAN		F.A.P. RTE. 361	SECTION 06-00214-20-BR	COUNTY KANE	TOTAL SHEETS 320	SHEET NO. 45
	PLOT SCALE = 50.0003' / IN.	DRAWN - GS	REVISED -		SCALE: 1"=50'	SHEET NO. 3 OF 5 SHEETS	STA.	CONTRACT NO.		ILLINOIS FED. AID PROJECT	
	PLOT DATE = 1/13/2009	CHECKED - SE	REVISED -								
		DATE - 01/16/09	REVISED -								