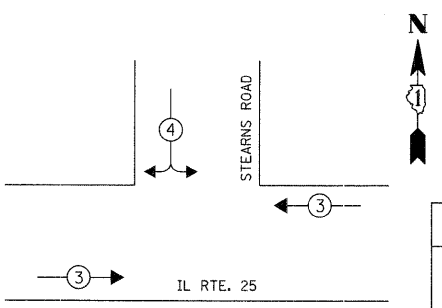


PHASE DESIGNATION DIAGRAM

OVERLAP LETTER	PERMISSIVE PHASE	PROTECTED PHASE
B	= 4	+ 5
* C	CONTINUOUS OVERLAP (FREE FLOW RIGHT)	

EMERGENCY VEHICLE PREEMPTION SEQUENCE

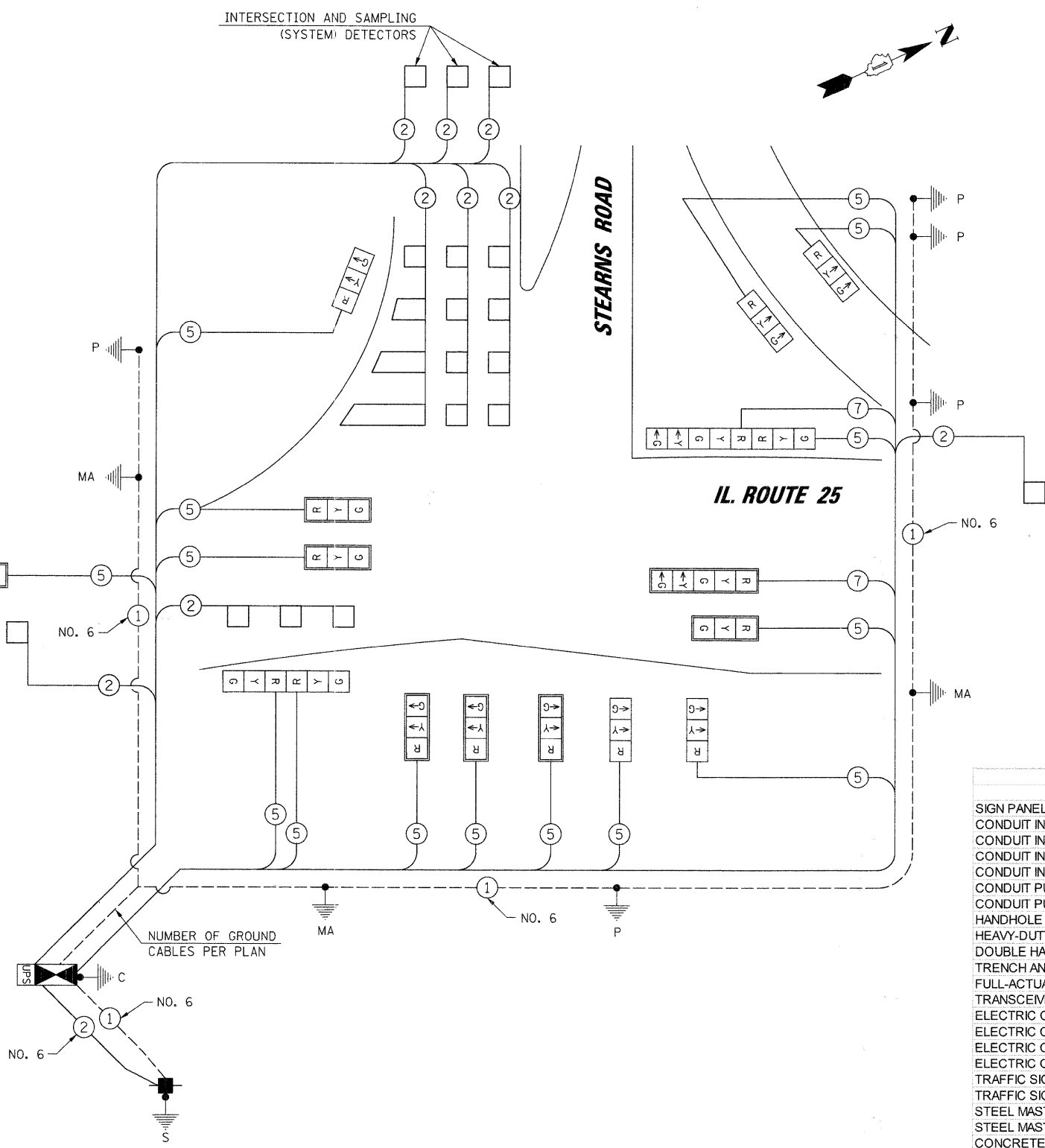


PROPOSED EMERGENCY VEHICLE PREEMPTORS		
EMERGENCY VEHICLE PREEMPTOR	3	4
MOVEMENT	← →	← ↘ ↙ →

I.D.O.T. TRAFFIC SIGNAL INSTALLATION ELECTRICAL SERVICE REQUIREMENTS					TOTAL WATTAGE
TYPE	NO. OF LAMPS	WATTAGE X INCAND. LED	X % OPERATION		
SIGNAL (RED)	17	17	0.50	144.50	
(YELLOW)	17	25	0.25	106.25	
(GREEN)	17	15	0.25	63.75	
ARROW	4	12	0.10	4.80	
PED. SIGNAL	-	25	1.00	-	
CONTROLLER	1	100	1.00	100.00	
LUMINAIRE		250	-	0.50	
FLASHER				0.50	-
ENERGY COSTS TO:				TOTAL =	419.30

ILLINOIS DEPARTMENT OF TRANSPORTATION
 DIVISION OF HIGHWAY/DISTRICT 1
 201 WEST CENTER COURT/SCHAUMBURG, ILLINOIS 60196-1096
 ENERGY SUPPLY: CONTACT: MARTY RUBIN
 PHONE: (847) 608 2400
 COMPANY: COMED

FOUNDATION (DEPTH)	FT. (m)	CABLE SLACK	FT. (m)	VERTICAL	FT. (m)
TYPE A - POST	4 (1.2)	HANDHOLE	6.5 (2.0)	ALL FOUNDATIONS	3.5 (1.0)
C - CONTROLLER W/ UPS	4 (1.2)	DOUBLE HANDHOLE	13 (4.0)	MAST ARM (L) POLE	20'±L-2'±
D - CONTROLLER	4 (1.2)	SIGNAL POST	2 (1.0)		(6m±-0.6m)±
E - M. ARM POLE		CONTROLLER CAB.	1 (0.5)	BRACKET MOUNTED	13 (4.0)
	30" (750mm)	FIBER OPTIC	13 (4.0)	PED. PUSHBUTTON	6 (1.8)
	36" (900mm)	ELECTRIC SERVICE	1 (0.5)	ELECTRIC SERVICE	13.5 (4.1)
	42" (1050mm)	GROUND CABLE	1 (0.5)	SERVICE TO GROUND	13.5 (4.1)
				POST MOUNTED	6 (1.8)



CABLE PLAN LEGEND		
EXISTING	PROPOSED	
		8" (200mm) TRAFFIC SIGNAL SECTION
		12" (300mm) TRAFFIC SIGNAL SECTION
		12" (300mm) PEDESTRIAN SIGNAL SECTION
		CONTROLLER CABINET
		SERVICE INSTALLATION
		TELEPHONE INSTALLATION
		VEHICLE DETECTOR, INDUCTION LOOP
		MAGNETIC DETECTOR
		EMERGENCY VEHICLE LIGHT DETECTOR
		CONFIRMATION BEACON
		PUSHBUTTON DETECTOR
		2 DENOTES NUMBER OF CONDUCTORS. ALL CABLE NO. 14 EXCEPT AS INDICATED. ALL LOOP DETECTOR CABLE TO BE SHIELDED.
		1 GROUND CABLE IN CONDUIT NO. 6 SOLID COPPER (GREEN)
		24 FIBER OPTIC CABLE IN CONDUIT NO. 62.5/125 2-MM12F SM12F
		SIGNAL FACE WITH BACKPLATE
		"P" INDICATES PROGRAMMED HEAD.
		RAILROAD CONTROL CABINET
		ILLUMINATED SIGN "NO LEFT TURN"
		ILLUMINATED SIGN "NO RIGHT TURN"
		H/C GROUND ROD AT HANDHOLE (H), DOUBLE HANDHOLE (H), OR CONTROLLER (C)
		P GROUND ROD AT POST (P) OR MAST ARM POLE (MA)
		S GROUND ROD AT ELECTRIC SERVICE INSTALLATION
		UNINTERRUPTIBLE POWER SUPPLY

SCHEDULE OF QUANTITIES		
ITEM	UNIT	TOTAL
SIGN PANEL TYPE 1	SQ FT	24
CONDUIT IN TRENCH, 2" DIA., GALVANIZED STEEL	FOOT	1061
CONDUIT IN TRENCH, 2 1/2" DIA., GALVANIZED STEEL	FOOT	196
CONDUIT IN TRENCH, 3" DIA., GALVANIZED STEEL	FOOT	15
CONDUIT IN TRENCH, 4" DIA., GALVANIZED STEEL	FOOT	111
CONDUIT PUSHED, 2" DIA., GALVANIZED STEEL	FOOT	145
CONDUIT PUSHED, 4" DIA., GALVANIZED STEEL	FOOT	165
HANDHOLE	EACH	3
HEAVY-DUTY HANDHOLE	EACH	6
DOUBLE HANDHOLE	EACH	1
TRENCH AND BACKFILL FOR ELECTRICAL WORK	FOOT	1438
FULL-ACTUATED CONTROLLER AND TYPE IV CABINET	EACH	1
TRANSCIVER - FIBER OPTIC	EACH	1
ELECTRIC CABLE IN CONDUIT, SIGNAL NO. 14 5C	FOOT	2322
ELECTRIC CABLE IN CONDUIT, SIGNAL NO. 14 7C	FOOT	446
ELECTRIC CABLE IN CONDUIT, LEAD-IN, NO. 14 1 PAIR	FOOT	2500
ELECTRIC CABLE IN CONDUIT, SERVICE NO. 6 2C	FOOT	76
TRAFFIC SIGNAL POST, GALVANIZED STEEL 14 FT.	EACH	4
TRAFFIC SIGNAL POST, GALVANIZED STEEL 16 FT.	EACH	1
STEEL MAST ARM ASSEMBLY AND POLE, 36 FT.	EACH	2
STEEL MAST ARM ASSEMBLY AND POLE, 46 FT.	EACH	1
CONCRETE FOUNDATION TYPE A	FOOT	20
CONCRETE FOUNDATION, TYPE C	FOOT	4
CONCRETE FOUNDATION, TYPE E 36-INCH DIAMETER	FOOT	45
SIGNAL HEAD, LED, 1-FACE, 3-SECTION, MAST ARM MOUNTED	EACH	7
SIGNAL HEAD, LED, 1-FACE, 3-SECTION, BRACKET MOUNTED	EACH	5
SIGNAL HEAD, LED, 1-FACE, 5-SECTION, MAST ARM MOUNTED	EACH	1
SIGNAL HEAD, LED, 2-FACE, 3-SECTION, BRACKET MOUNTED	EACH	1
SIGNAL HEAD, LED, 2-FACE, 1-3 SECTION, 1-5 SECTION, BRACKET MOUNTED	EACH	1
TRAFFIC SIGNAL BACKPLATE, LOUVERED, ALUMINUM	EACH	8
INDUCTIVE LOOP DETECTOR	EACH	9
DETECTOR LOOP, TYPE I	FOOT	674
PREFORMED DETECTOR LOOP	FOOT	117
SERVICE INSTALLATION - POLE MOUNTED	EACH	1
UNINTERRUPTIBLE POWER SUPPLY	EACH	1
ELECTRIC CABLE IN CONDUIT, GROUND NO. 6 1C	FOOT	627