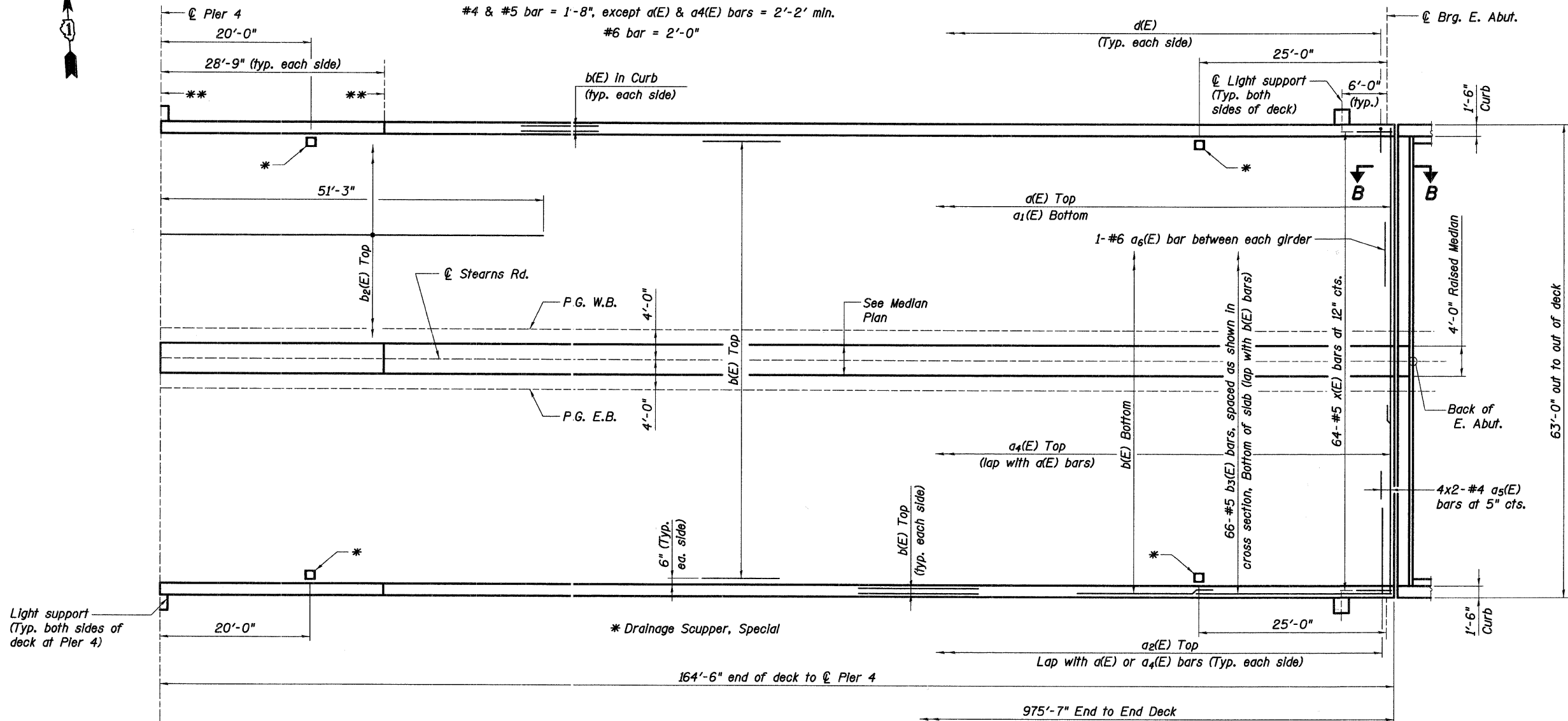


F.A.P. RTE.	SECTION	COUNTY	TOTAL SHEETS	SHEET NO.
361	06-00214-20-BR	KANE	320	123
STA. 511+80.00		TO STA. 609+14.92		
FED. ROAD DIST. NO. 7		ILLINOIS FED. AID PROJECT		
SHEET NO. S18 OF S108				

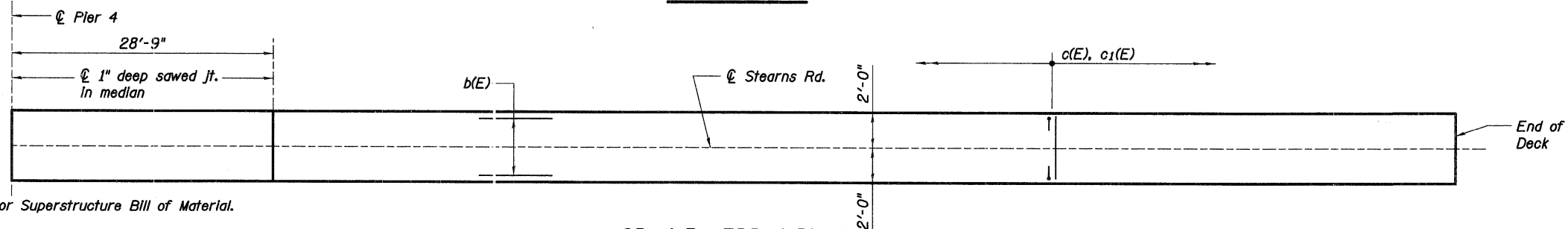
** 1/8" Aluminum Sheet ASTM B209 alloy 3003-H14, coated to minimize reaction with wet concrete. Cost included with Concrete Superstructure.

Minimum Lap Lengths

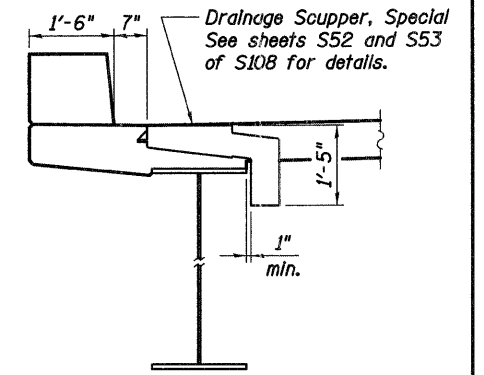
#4 & #5 bar = 1'-8", except a(E) & a4(E) bars = 2'-2" min.
#6 bar = 2'-0"



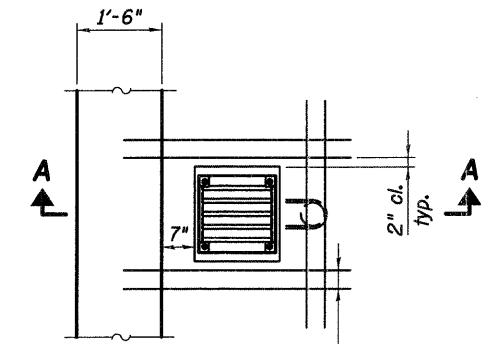
SPAN 5 PLAN



SPAN 5 MEDIAN PLAN



SECTION A-A



2-#5 a3(E) bars at 4" cts. (4'-0" long - 3 faces of scupper) tied to bottom of top reinforcement mat. (Typ.)

SCUPPER PLAN

Notes:

1. See Sheet S19 of S108 for Superstructure Bill of Material.
2. Bars indicated thus 20 x 3-#5 etc. indicates 20 lines of bars with 3 lengths per line.
3. See Sheet S19 of S108 for curb reinforcement.
4. Cut longitudinal reinforcement to clear drainage scuppers.
5. For drainage scupper details, see sheet S55 of S108.
6. See Sheet S21 of S108 for Section B-B.
7. For light support details see sheet S21 of S108.

REVISIONS	
NAME	DATE

Baker

Baker Engineering, Inc.

ILLINOIS DEPARTMENT OF TRANSPORTATION

DECK AND MEDIAN PLAN V

STEARNS ROAD OVER THE FOX RIVER PUBLIC WATERS
STRUCTURE NUMBER 045-3166
KANE COUNTY FAP 361 SECTION 06-00214-20-BR
STATION 571+42.96 DESIGNED: CWG DRAWN: SCW
DATE: JANUARY 16, 2009 CHECKED: KPZ CHECKED: KPZ