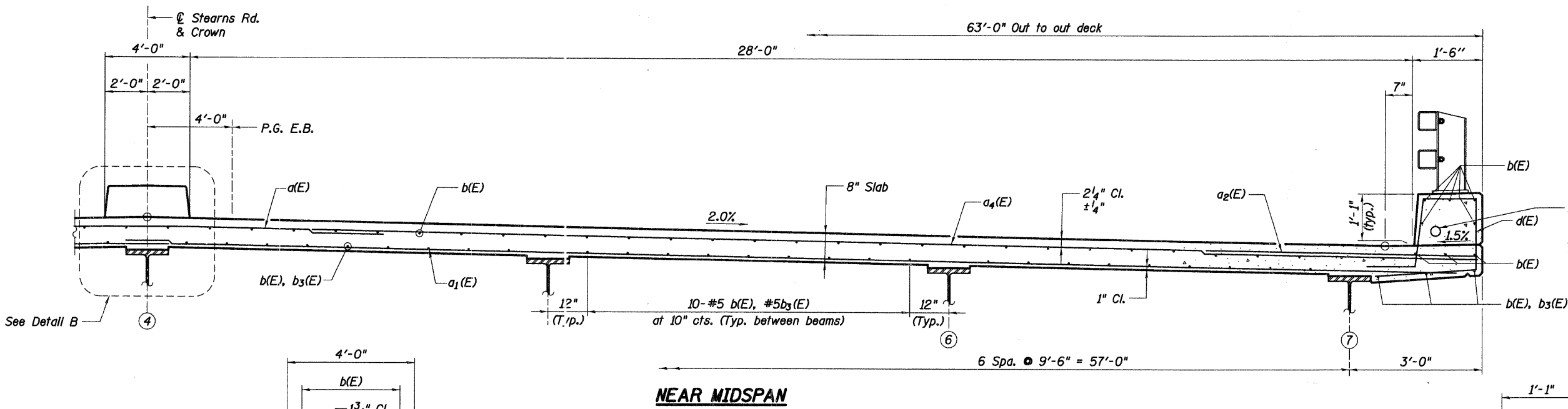
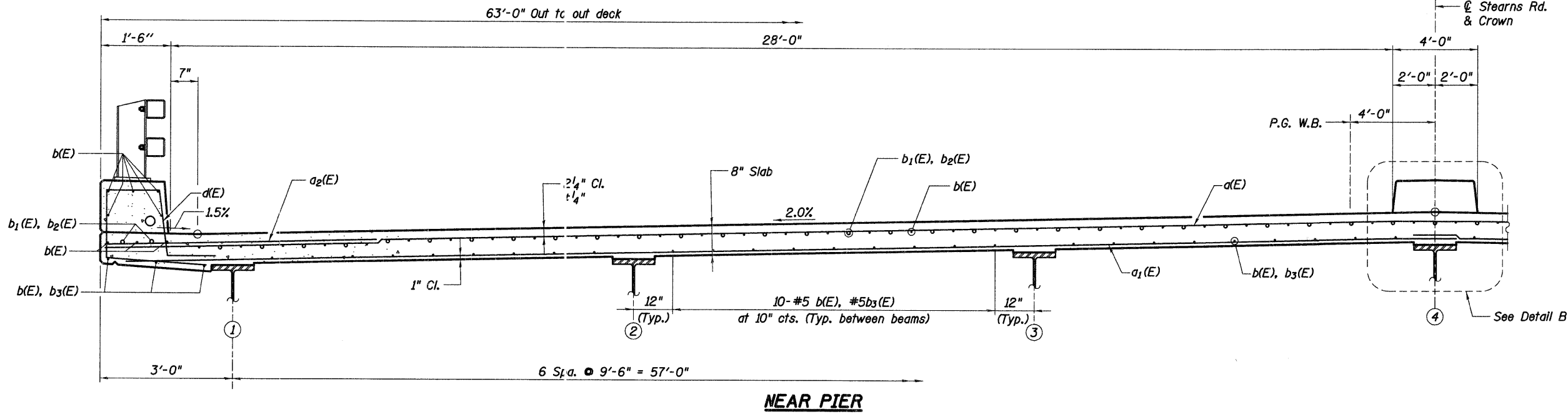


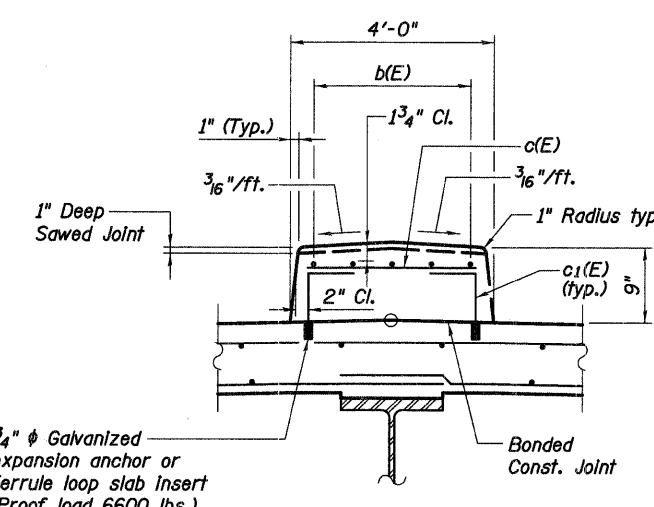
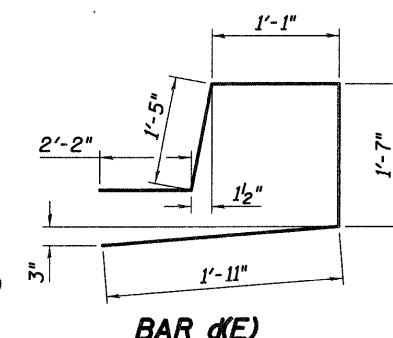
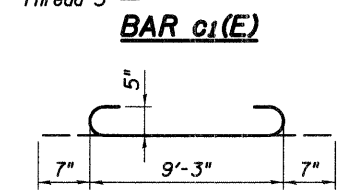
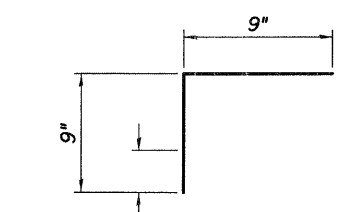
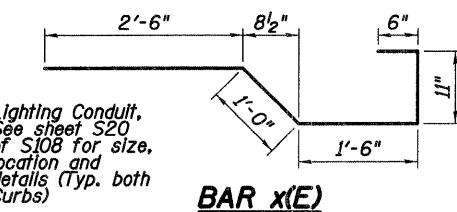
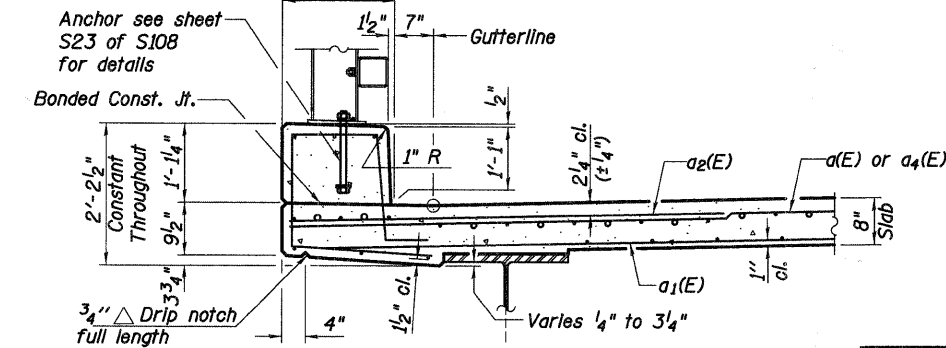
F.A.P. RTE.	SECTION	COUNTY	TOTAL SHEETS	SHEET NO.
361	06-00214-20-BR	KANE	320	124
STA. 511+80.00		TO STA. 609+14.92		
FED. ROAD DIST. NO. 7 ILLINOIS FED. AID PROJECT				
SHEET NO. S19 OF S108				

**SUPERSTRUCTURE
BILL OF MATERIAL**

Bar	No.	Size	Length	Shape
a(E)	2,342	# 5	37'-2"	—
a ₁ (E)	3,346	# 5	32'-2"	—
a ₂ (E)	4,684	# 6	6'-0"	—
a ₃ (E)	96	# 5	4'-0"	—
a ₄ (E)	2,342	# 5	27'-8"	—
a ₅ (E)	16	# 4	32'-2"	—
a ₆ (E)	12	# 5	10'-5"	—
a ₇ (E)	48	# 5	8'-0"	—
b(E)	5,079	# 5	29'-8"	—
b ₁ (E)	189	# 6	41'-8"	—
b ₂ (E)	567	# 6	35'-6"	—
b ₃ (E)	132	# 5	14'-10"	—
c(E)	977	# 5	3'-6"	—
c ₁ (E)	1,954	# 5	1'-6"	—
d(E)	3,904	# 5	8'-2"	—
d ₁ (E)	48	# 6	8'-0"	—
d ₂ (E)	48	# 6	12'-4"	—
d ₃ (E)	60	# 6	8'-0"	—
d ₄ (E)	48	# 6	6'-5"	—
x ₁ (E)	128	# 5	6'-5"	—
Reinforcement Bars, Epoxy Coated			Pound	558,760
Concrete Superstructure			Cu. Yds.	1,839



**DECK CROSS SECTION
(Looking Upstation)**



DETAIL B

Note:
1. The cost of Expansion Anchors/Inserts is included in the cost of Reinforcement Bars, Epoxy Coated.

Baker
Baker Engineering, Inc.

REVISIONS	
NAME	DATE

ILLINOIS DEPARTMENT OF TRANSPORTATION
DECK CROSS SECTION
STEARNS ROAD
OVER THE FOX RIVER
STRUCTURE NUMBER 045-3166
PUBLIC WORKS
KANE COUNTY
FAP 361 SECTION 06-00214-20-BR
STATION 571+42.96
DESIGNED: GWG
DRAWN: SCW
DATE: JANUARY 16, 2009
CHECKED: KPZ
CHECKED: KPZ

P:\113005\3.0 phase II deliverables\3.3 structure\drawings\Final\045-3166 DeckX-sec.dgn
 2/10/2009