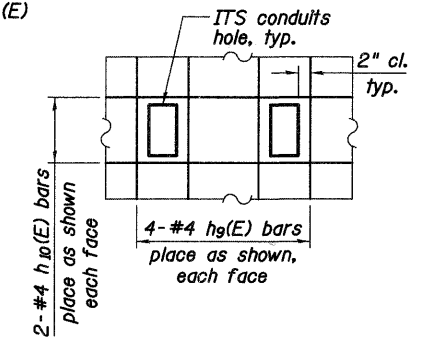
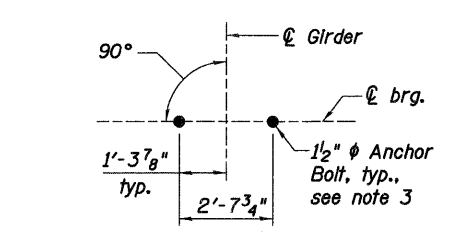
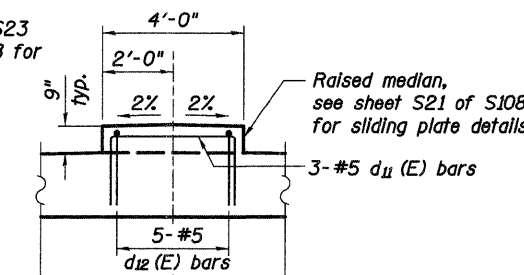
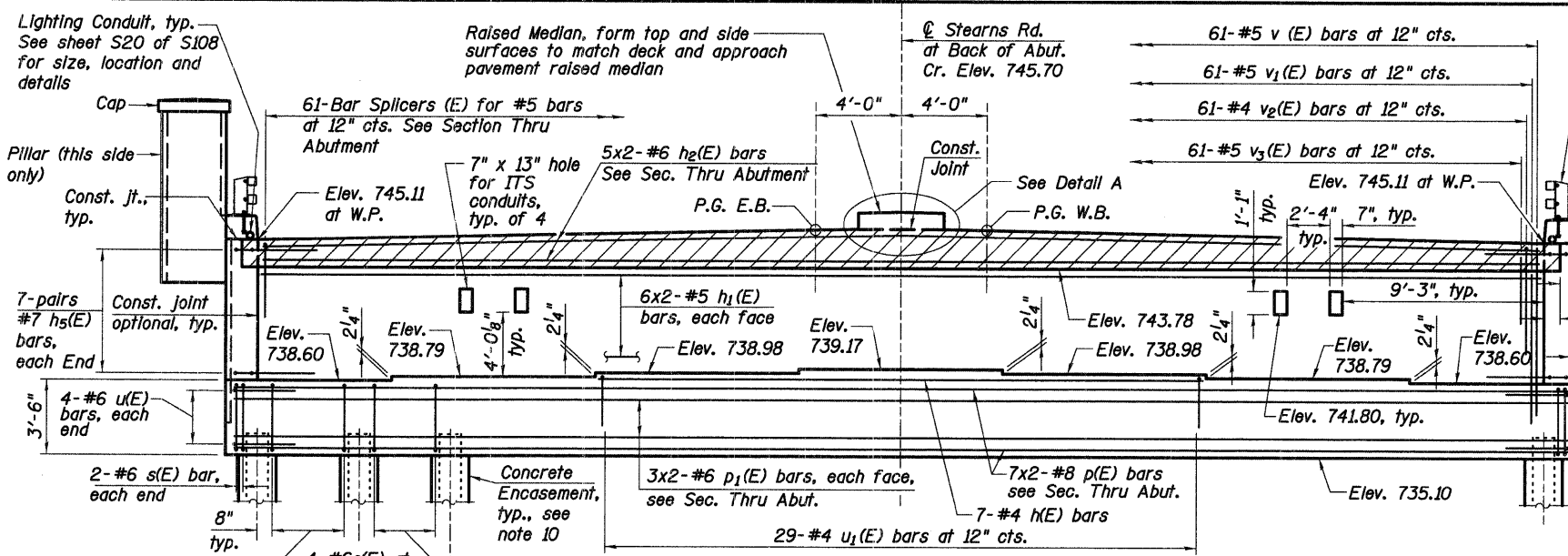


F.A.P. RTE.	SECTION	COUNTY	TOTAL SHEETS	SHEET NO.
361	06-00214-20-BR	KANE	320	140
STA. 511+80.00		TO STA. 609+14.92		
FED. ROAD DIST. NO. 7		ILLINOIS		FED. AID PROJECT
SHEET NO. S35 OF S108				



- Notes:**
- For details of Bar Splicers, see sheet S25 of S108.
  - For additional abutment details see sheets S36 and S39 of S108.
  - For bearing assembly and bearing assembly anchor bolt details see sheets S31 to S32 of S108.
  - For Modular Joint details see sheet S34 of S108 and for Modular Joint anchor bolt details see sheet S21 of S108.
  - Space reinforcement in pile cap to miss anchor bolts.
  - Four steps monolithically with cap.
  - Bars indicated thus 3x2-#5 etc. indicates 3 lines of bars with 2 lengths per line.
  - Hatched area to be poured after superstructure false work has been removed. Quantity of concrete included with Concrete Superstructure.
  - Quantity of concrete in end post included with Concrete Superstructure.
  - For details of piles and concrete encasement see sheet S52 of S108.
  - For piles (total of 2) located within MSE Wall 1 reinforced soil limits, utilize corrugated metal pipe pile spacers as per Special Provisions. Pile spacers to be placed prior to MSE Wall 1 construction so that these piles are driven after Wall 1 has been constructed.
  - Concrete Sealer shall be applied to the surface of the backwall, bearing seat, and pile cap front face.
  - For additional ITS conduit and conduits hole details see lighting plans.
  - Field cut or bend bars in back wall to miss holes for ITS conduits.




**WEST ABUTMENT PILE DATA**

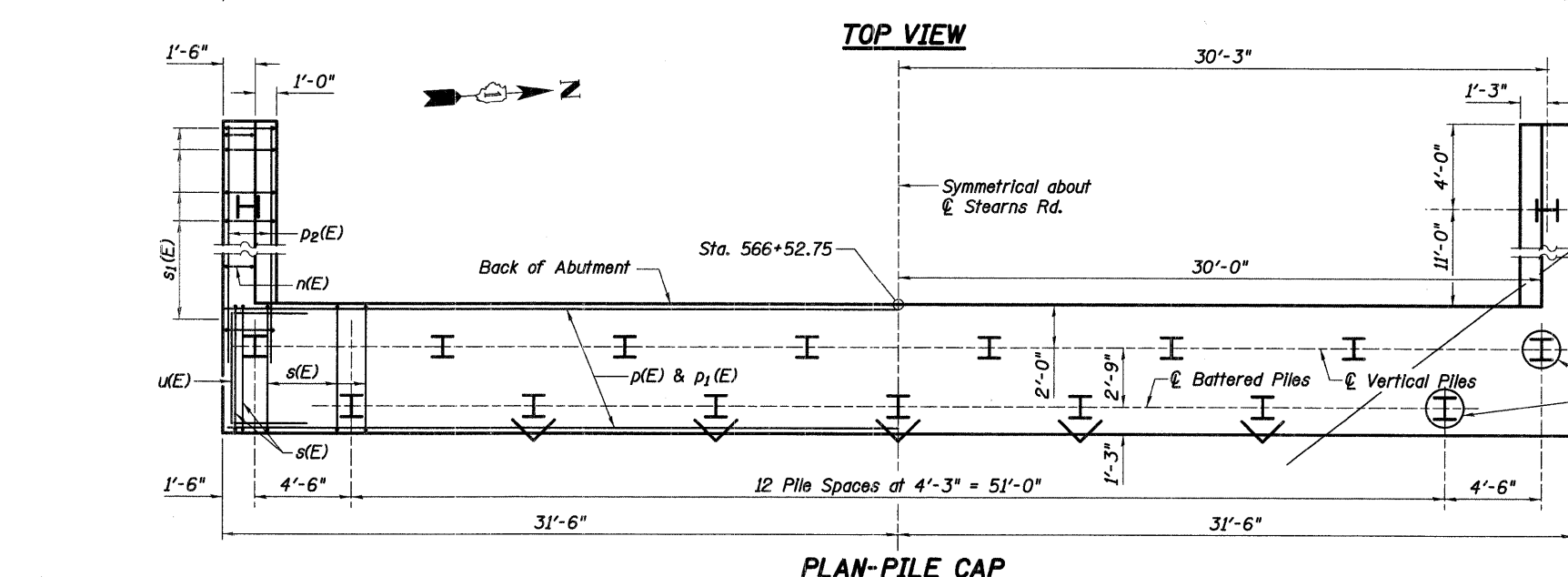
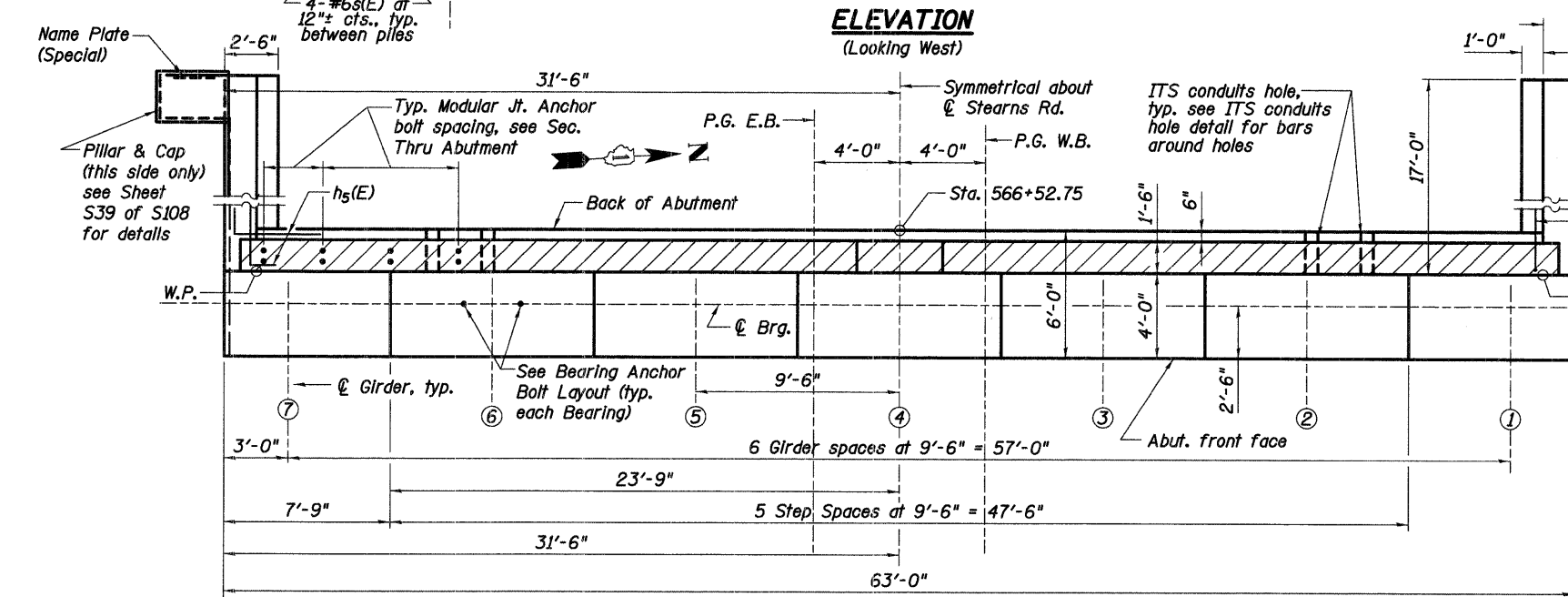
Type: HP 12x74  
 Nominal Required Bearing: 360 KIPS  
 Factored Resistance Available: 180 KIPS  
 Est. Length: 83 ft.  
 No. Production Piles: 16  
 No. Test Piles: 1

Piles shall be driven through 18 inch diameter precored holes extending to elevation 714.00 feet according to article 512.09(c) of the standard specifications except for piles in corrugated metal pipe. All costs associated with precoring and backfilling shall be included in "Driving Piles".

No piles shall be driven until a minimum of 30 days after the full height construction of the abutment embankment and construction berm has been completed.

The contractor shall limit the pile hammer size selected considering the relatively high soil strengths indicated in the borings and avoid overdriving the piles beyond their nominal required bearing to prevent pile damage during driving.

- Battered Piles -  Piles with Corrugated Metal Pipe Pile Spacers 
- Vertical Piles - 



REVISIONS	
NAME	DATE

ILLINOIS DEPARTMENT OF TRANSPORTATION

**WEST ABUTMENT I**

STEARNS ROAD OVER THE FOX RIVER PUBLIC WATERS  
 STRUCTURE NUMBER 045-3166

KANE COUNTY FAP 361 SECTION 06-00214-20-BR  
 STATION 571+42.96 DESIGNED: DAP DRAWN: SCW  
 DATE: JANUARY 16, 2009 CHECKED: KPZ CHECKED: KPZ



phase II deliverables\3.3 structure\drawings\Final\045-3166 Abut. I\_west.dgn  
 3/25/2009