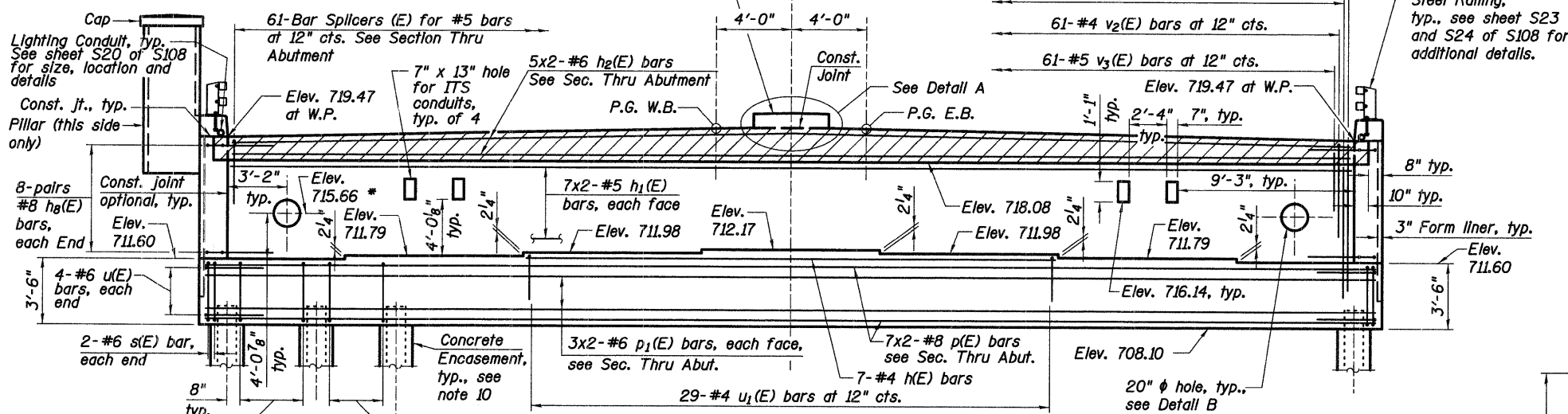


F.A.P. RTE.	SECTION	COUNTY	TOTAL SHEETS	SHEET NO.
361	06-00214-20-BR	KANE	320	142
STA. 511+80.00		TO STA. 609+14.92		
FED. ROAD DIST. NO. 7		ILLINOIS FED. AID PROJECT		
SHEET NO. 537 OF S108				

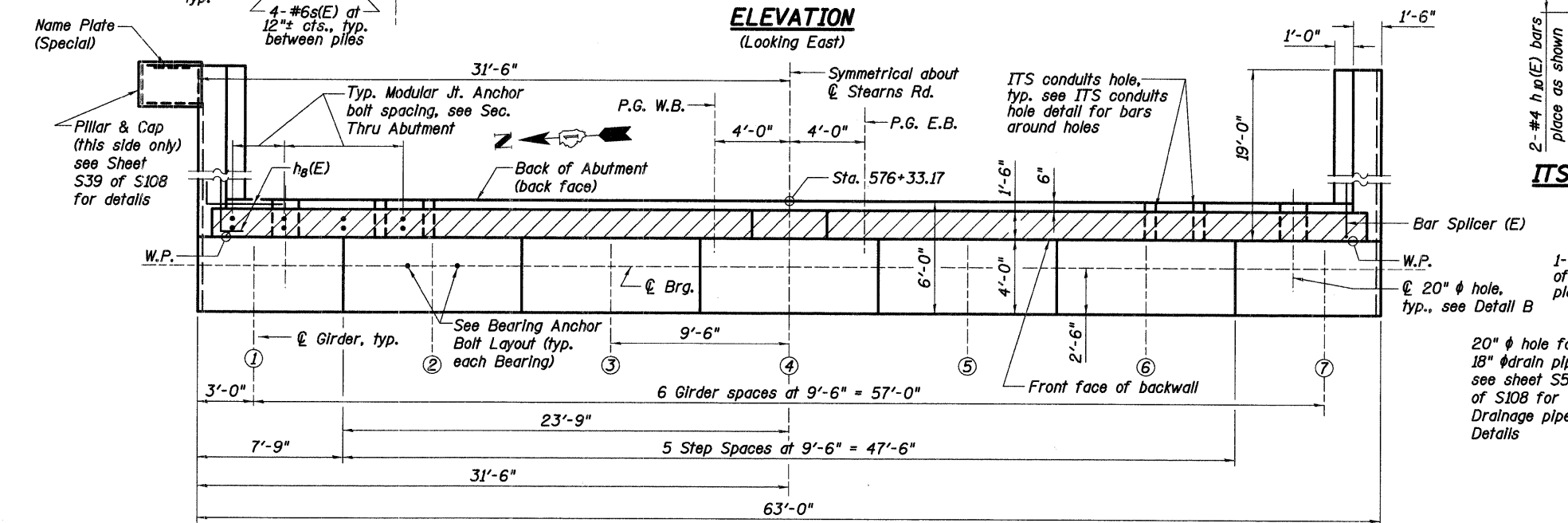
\* Elevation shown is on front face of the backwall, provide 3.0% downward slope towards backface of backwall

Raised Median, form top and side surfaces to match deck and approach pavement raised median

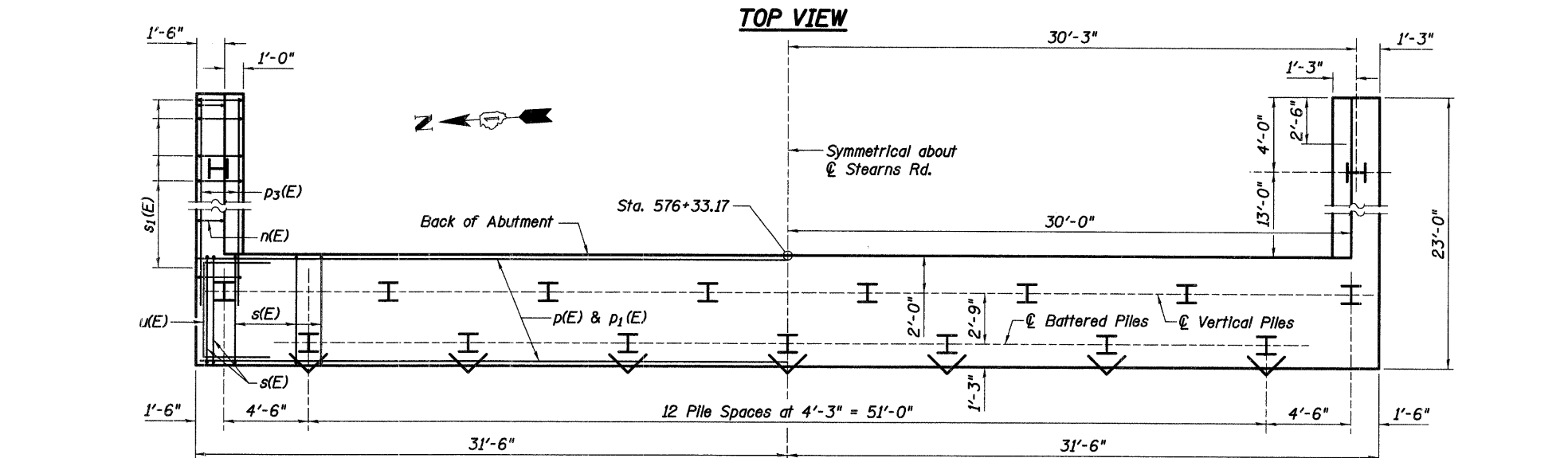
Stearns Rd. at Back of Abut. Cr. Elev. 719.98



**ELEVATION**  
(Looking East)

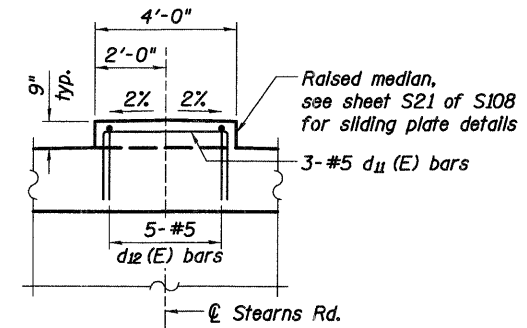


**TOP VIEW**

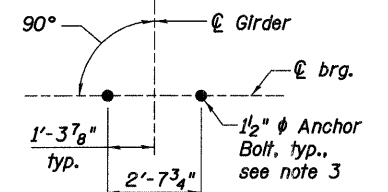


**PLAN-PILE CAP**

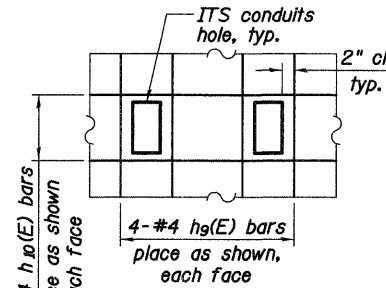
Steel Railing, typ., see sheet S23 and S24 of S108 for additional details.



**DETAIL A**



**BEARING ANCHOR BOLT LAYOUT**

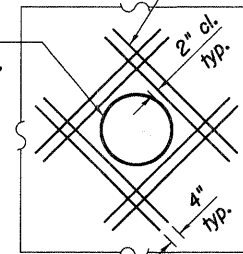


**ITS CONDUITS HOLE DETAIL**

(shows partial elevation with typical additional rebar)

1-#4 hg(E) bars, typ. of 8 each face, place as shown

20" φ hole for 18" φ drain pipe, see sheet S52 of S108 for Drainage pipe Details



**DETAIL B**

**Notes:**

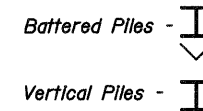
- For details of Bar Splicers, see sheet S25 of S108.
- For additional abutment details see sheets S36 and S39 of S108.
- For bearing assembly and bearing assembly anchor bolt details see sheets S31 to S32 of S108.
- For Modular Joint details see sheet S34 of S108 and for Modular joint anchor bolt details see sheet S21 of S108.
- Space reinforcement in pile cap to miss anchor bolts.
- Pour steps monolithically with cap.
- Bars indicated thus 3x2-#5 etc. Indicates 3 lines of bars with 2 lengths per line.
- Hatched area to be poured after superstructure false work has been removed. Quantity of concrete included with Concrete Superstructure.
- Quantity of concrete in end post included with Concrete Superstructure.
- For details of piles and concrete encasement see sheet S52 of S108.
- Concrete Sealer shall be applied to the surface of the backwall, bearing seat, and pile cap front face.
- For additional ITS conduit and conduits hole details see lighting plans.
- Field cut or bend bars in back wall to miss holes for ITS conduits and hole for drainage pipe.

**EAST ABUTMENT PILE DATA**

Type: HP 12x74  
 Nominal Required Bearing: 360 KIPS  
 Factored Resistance Available: 180 KIPS  
 Est. Length: 41 ft.  
 No. Production Piles: 16  
 No. Test Piles: 1

Piles shall be driven through 18 inch diameter precored holes extending to elevation 693.00 feet according to article 512.09(c) of the standard specifications. All costs associated with precoring and backfilling shall be included in "Driving Piles".

The contractor shall limit the pile hammer size selected considering the relatively high soil strengths indicated in the borings and avoid overdriving the piles beyond their nominal required bearing to prevent pile damage during driving.



REVISIONS	
NAME	DATE

ILLINOIS DEPARTMENT OF TRANSPORTATION

**EAST ABUTMENT I**

STEARNS ROAD OVER THE FOX RIVER PUBLIC WATERS  
 STRUCTURE NUMBER 045-3166  
 KANE COUNTY FAP 361 SECTION 06-00214-20-BR  
 STATION 571+42.96 DESIGNED: DAP DRAWN: SGW  
 DATE: JANUARY 16, 2009 CHECKED: KPZ CHECKED: KPZ

**Baker**

Baker Engineering, Inc.