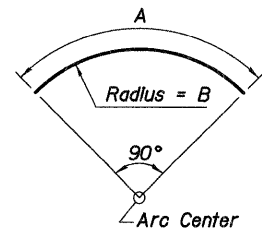


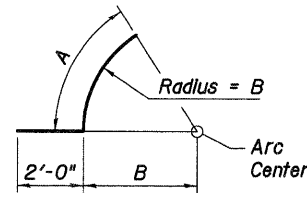
F.A.P. RTE.	SECTION	COUNTY	TOTAL SHEETS	SHEET NO.
361	06-00214-20-BR	KANE	320	155
STA. 511+80.00		TO STA. 609+14.92		
FED. ROAD DIST. NO. 7		ILLINOIS FED. AID PROJECT		
SHEET NO. S50 OF S108				

**PIER 4 BILL OF MATERIAL**

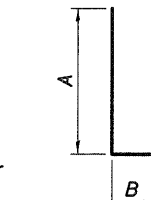
Bar	No.	Size	Length	Shape	A	B	C
h21(E)	28	# 7	32'-4"				
h22(E)	5	# 5	28'-1"				
h23(E)	28	# 5	6'-0"				
h24(E)	10	# 5	24'-9"		24'-9"	15'-9"	
h25(E)	20	# 5	6'-6"		4'-6"	4'-6"	
h30(E)	8	# 6	19'-2"				
h33(E)	5	# 5	14'-2"		14'-2"	9'-0"	
h34(E)	10	# 5	5'-0"		3'-0"	2'-6"	
n22(E)	106	# 9	10'-9"		9'-2"	1'-7"	
n23(E)	38	# 8	13'-3"		11'-11"	1'-4"	
p21(E)	24	# 11	34'-6"				
p22(E)	14	# 10	20'-9"		18'-11"	1'-10"	
p23(E)	7	# 10	34'-10"				
p31(E)	7	# 10	20'-6"				
p32(E)	7	# 10	24'-0"		22'-2"	1'-10"	
s21(E)	20	# 5	25'-7"		8'-2"	4'-2"	0'-5 1/2"
s22(E)	108	# 4	4'-11"		0'-4 1/2"	4'-2"	0'-4 1/2"
s23(E)	25	# 4	8'-11"		0'-4 1/2"	8'-2"	0'-4 1/2"
s25(E)	28	# 5	13'-4"		4'-7"	4'-2"	
s26(E)	12	# 5	12'-4"		4'-1"	4'-2"	
s28(E)	28	# 4	4'-9"		0'-4 1/2"	4'-4 1/2"	
s29(E)	12	# 4	4'-4"		0'-4 1/2"	3'-11 1/2"	
s30(E)	142	# 6	22'-2"		7'-5"	3'-0"	0'-8"
s40(E)	20	# 5	19'-7"		5'-2"	4'-2"	0'-5 1/2"
s41(E)	8	# 5	13'-8"		4'-9"	4'-2"	
s42(E)	15	# 4	5'-11"		0'-4 1/2"	5'-2"	0'-4 1/2"
s43(E)	16	# 5	10'-4"		3'-1"	4'-2"	
s44(E)	16	# 4	3'-3"		0'-4 1/2"	2'-10 1/2"	
s45(E)	28	# 6	15'-2"		3'-11"	3'-0"	0'-8"
u22(E)	85	# 6	20'-8"				
u23(E)	147	# 10	20'-8"				
u21(E)	27	# 6	11'-2"		3'-6"	4'-2"	
u22(E)	16	# 6	15'-8"		5'-9"	4'-2"	
u23(E)	29	# 5	7'-10"		1'-10"	4'-2"	
u24(E)	24	# 6	7'-0"		1'-6"	4'-0"	
u25(E)	14	# 5	7'-0"				
u30(E)	7	# 5	4'-6"				
v22(E)	144	# 7	7'-0"				
v32(E)	106	# 9	18'-7"				
w22(E)	153	# 10	31'-11"				



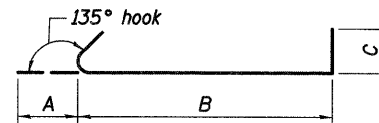
**BARS h24(E) & h33(E)**



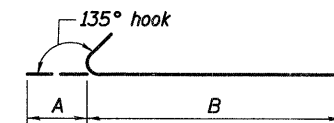
**BARS h25(E) & h34(E)**



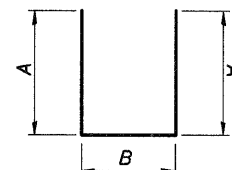
**BARS n22(E), n23(E) & p22(E)**



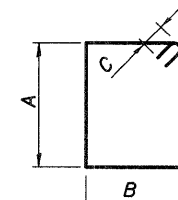
**BARS s22(E), s23(E) & s42(E)**



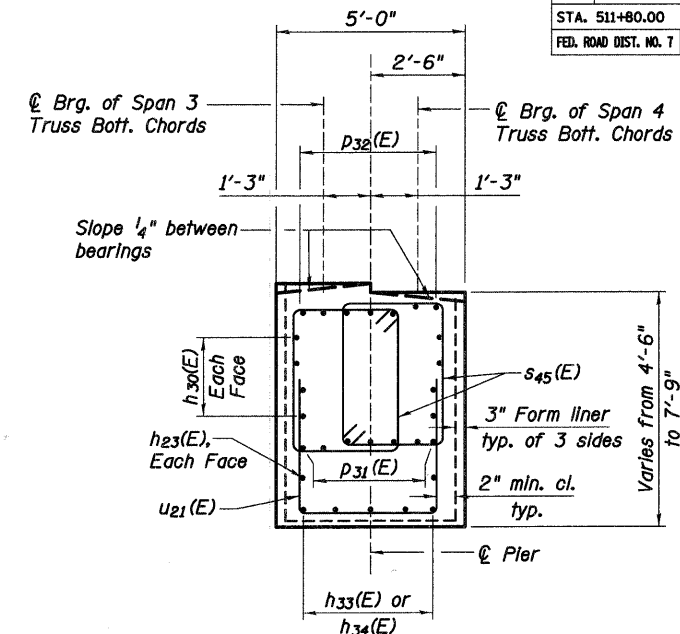
**BARS s28(E), s29(E) & s44(E)**



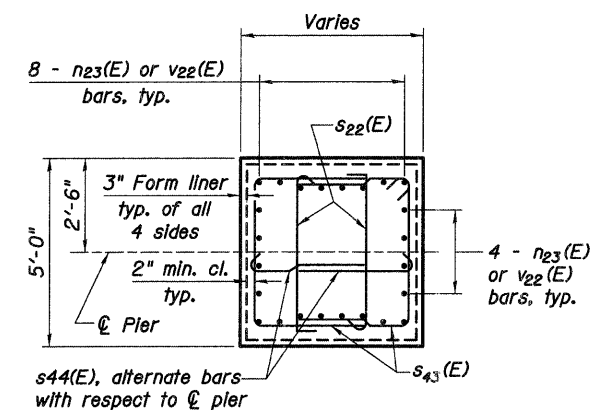
**BARS s25(E), s26(E), s41(E), s43(E) & u21(E) to u24(E)**



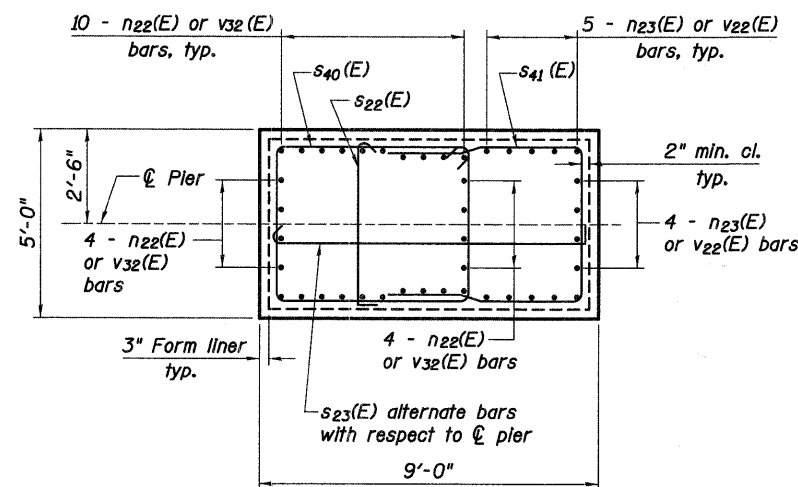
**BARS s21(E), s30(E), s40(E) & s45(E)**



**SECTION E-E**



**SECTION F-F**



**SECTION D-D**

**MINIMUM BAR LAP**

- #4 = 1'-4"
- #5 = 1'-8"
- #6 = 2'-0" (U.N.O.)
- #6 = 2'-6" (Drilled Shaft only)
- #7 = 2'-9"
- #8 = 4'-6"
- #9 = 4'-9"
- #10 = 5'-10" (Pier Cap & Footing)
- #10 = 7'-3" (Pier Column)
- #11 = 7'-2"

Concrete Structures	Cu. Yd.	504
Reinforcement Bars, Epoxy Coated	Pound	70,970
Structure Excavation	Cu. Yd.	538
Form Liner Textured Surface	Sq. Ft.	3,148
Furnishing Steel Piles HP 12x7 1/4	Foot	1,540
Driving Piles	Foot	1,540
Test Pile Steel HP 12x7 1/4	Each	1

REVISIONS	
NAME	DATE

ILLINOIS DEPARTMENT OF TRANSPORTATION  
**PIER 4 DETAILS III**  
 STEARNS ROAD OVER THE FOX RIVER PUBLIC WATERS  
 STRUCTURE NUMBER 045-3166  
 KANE COUNTY FAP 361 SECTION 06-00214-20-BR  
 STATION 571+42.96 DESIGNED: DAP DRAWN: SCW  
 DATE: JANUARY 16, 2009 CHECKED: KPZ CHECKED: KPZ

