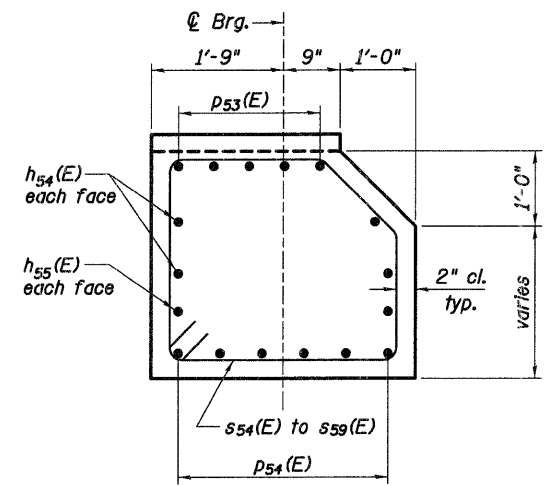
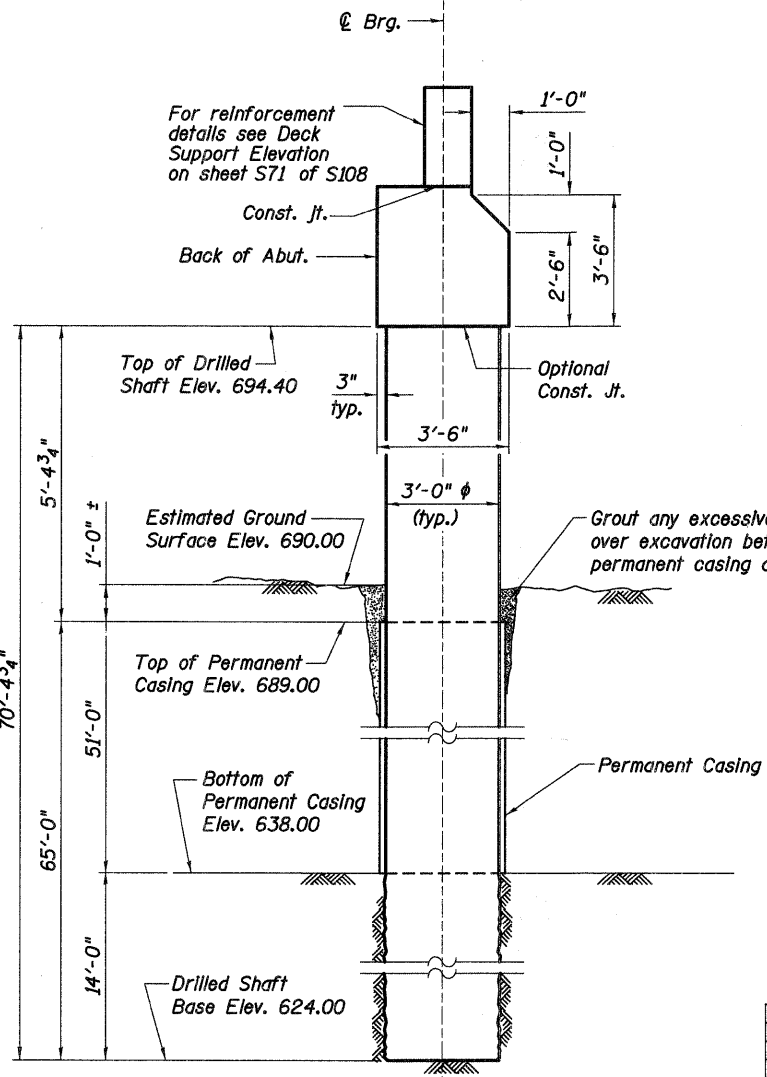
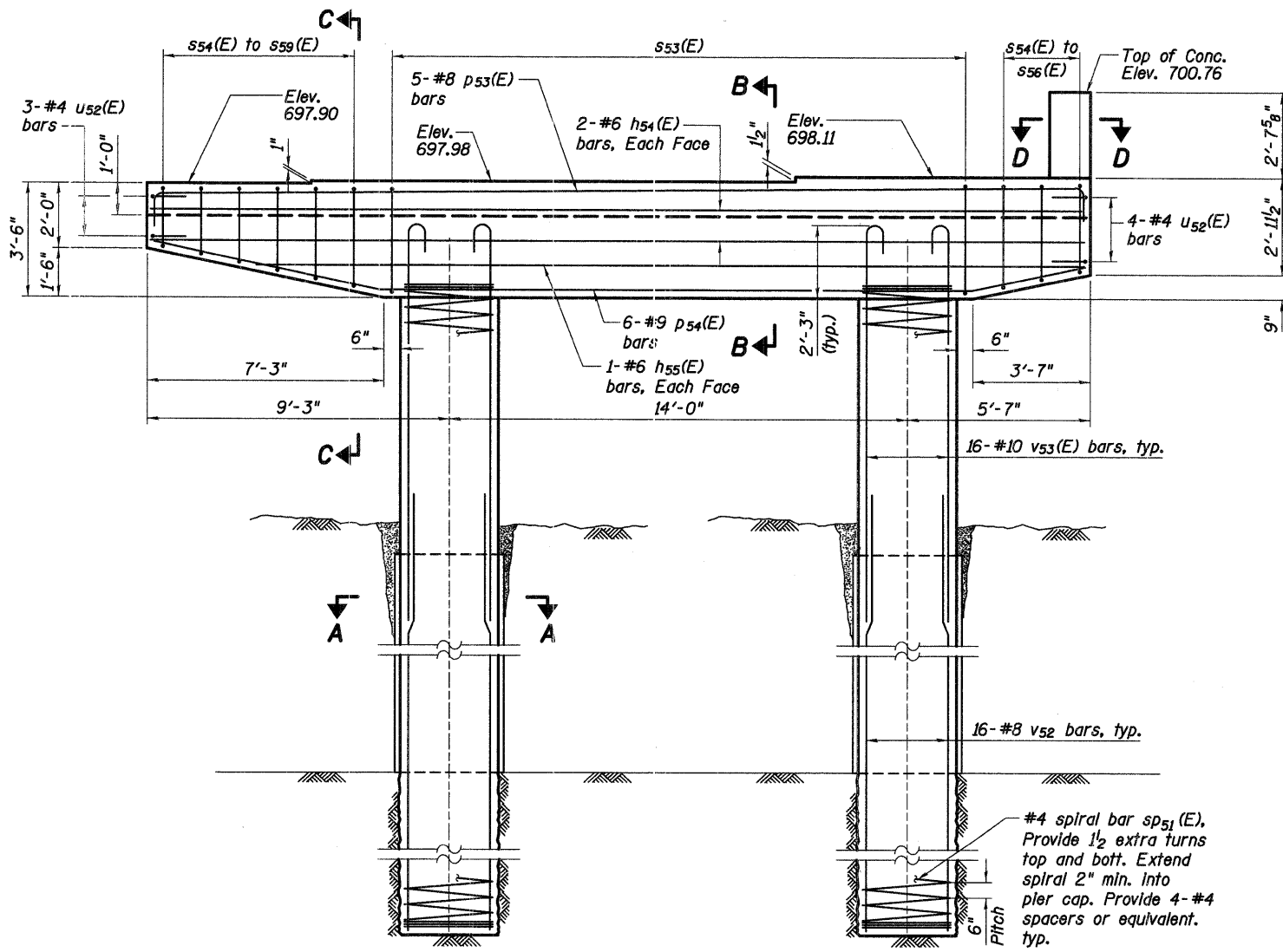
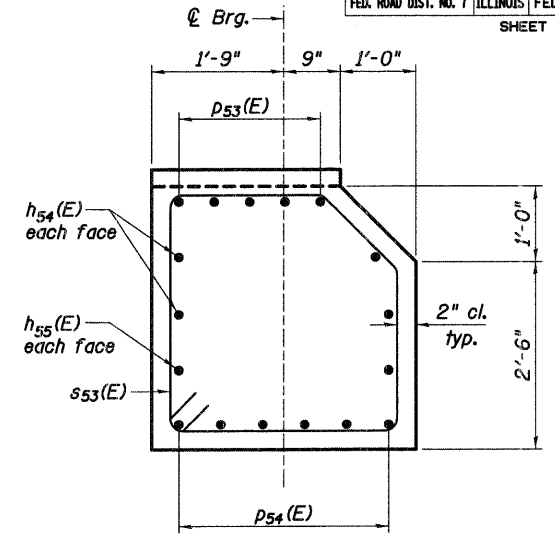
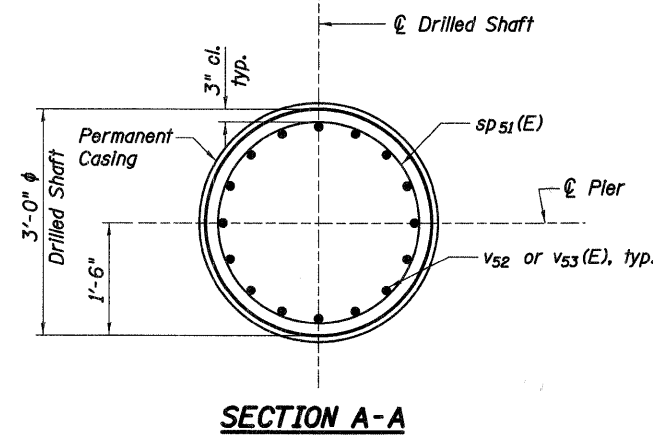
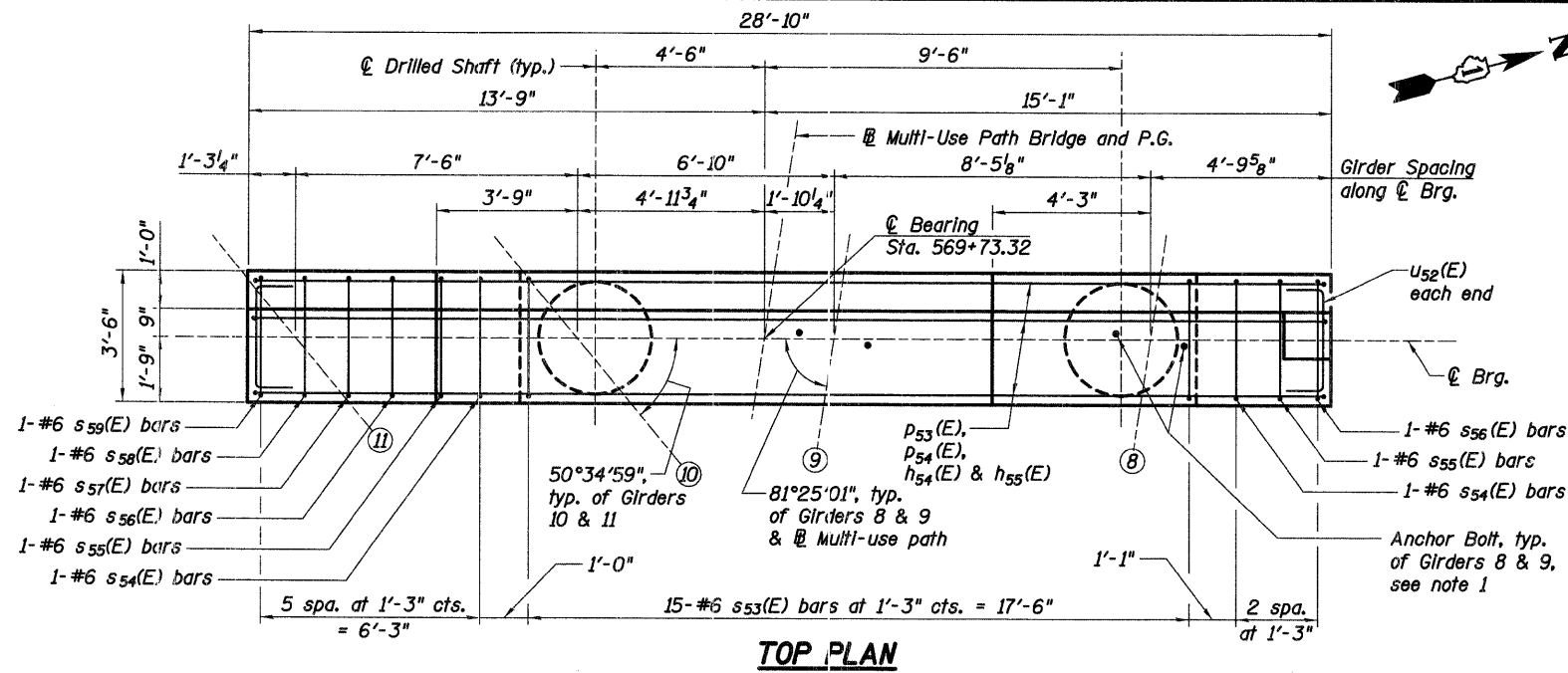


F.A.P. RTE.	SECTION	COUNTY	TOTAL SHEETS	SHEET NO.
361	06-00214-20-BR	KANE	320	175
STA. 511+80.00		TO STA. 609+14.92		
FED. ROAD DIST. NO. 7		ILLINOIS FED. AID PROJECT		
SHEET NO. S70 OF S108				



- Drilled Shaft Notes:**
- Contractor is responsible for determining the permanent casing thickness and the actual bottom of permanent casing elevation to be used. See Article 516.06(d) and 1006.05(d) of the Standard Specifications.
 - Pay limits for the Permanent Casing shall be based on the minimum length shown.
- Notes:**
- For additional abutment details see sheet S71 of S108.
 - For bearing assembly and bearing assembly anchor bolt details see sheet S69 of S108.
 - Space reinforcement in pier cap to miss anchor bolts.
 - Concrete Sealer shall be applied to the surface of the bearing seat, and to both faces and ends of the pier cap.

REVISIONS	
NAME	DATE

ILLINOIS DEPARTMENT OF TRANSPORTATION

MUP BRIDGE - WEST ABUTMENT I

MULTI-USE PATH BRIDGE OVER THE FOX RIVER PUBLIC WATERS

STRUCTURE NUMBER 045-3164

KANE COUNTY FAP 361 SECTION 06-00214-20-BR

STATION 572+37.71 DESIGNED: DAP DRAWN: SGW

DATE: JANUARY 16, 2009 CHECKED: KPZ CHECKED: KPZ

Baker
Baker Engineering, Inc.

h:\3005\3.0 phase 11 deliverables\3.3 structure\drawings\Final\045-3164 MUP Bridge West Abut_I.dgn 1/15/2009