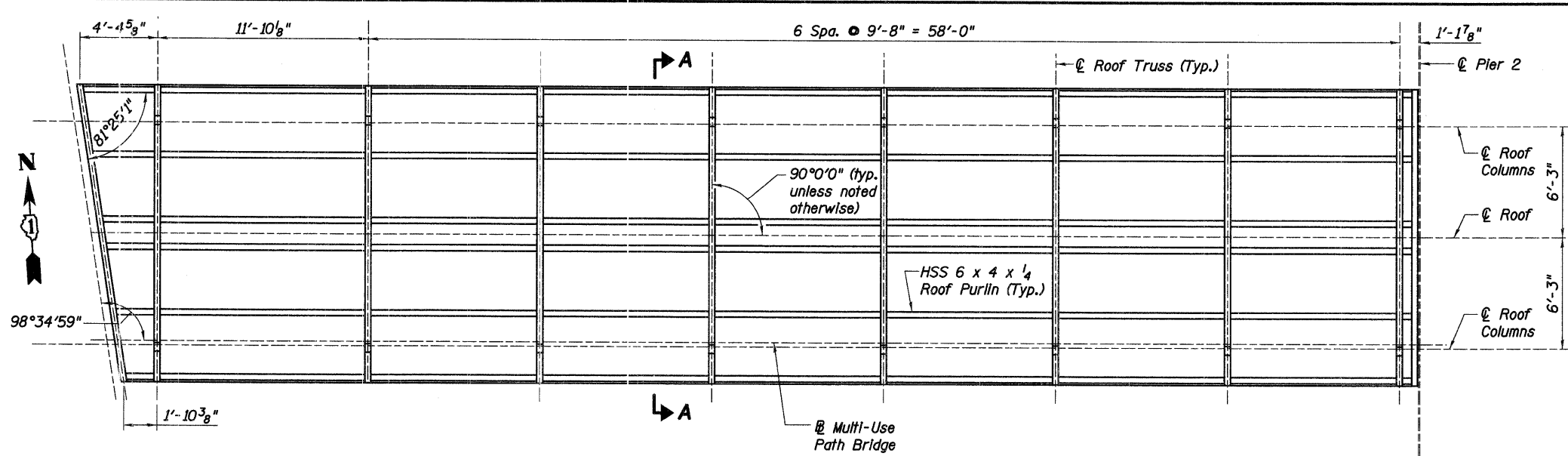
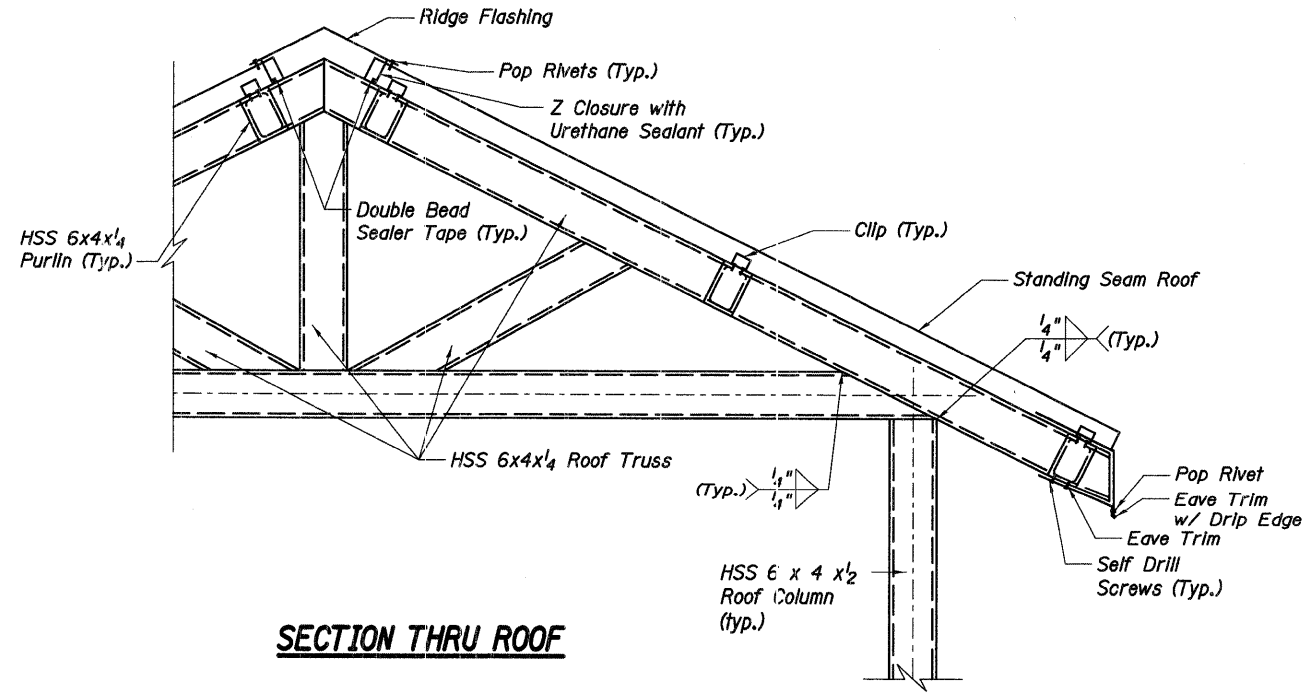


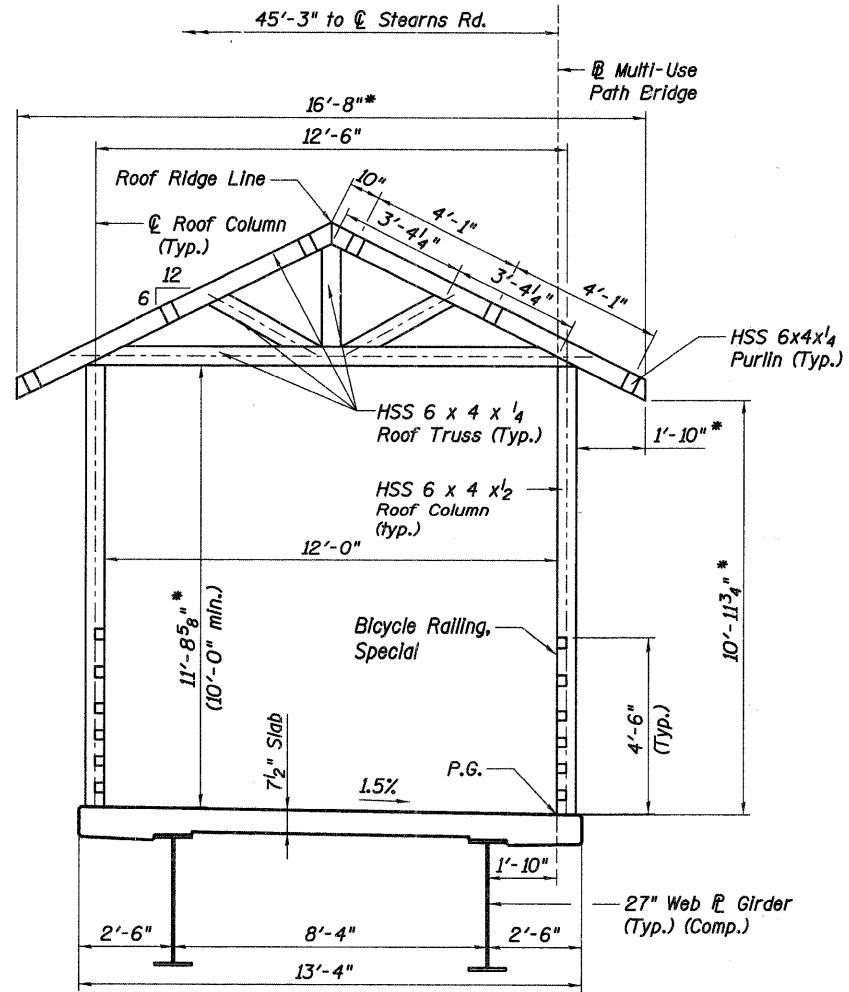
F.A.P. RTE.	SECTION	COUNTY	TOTAL SHEETS	SHEET NO.
361	06-00214-20-BR	KANE	320	179
STA. 511+80.00		TO STA. 609+14.92		
FED. ROAD DIST. NO. 7 ILLINOIS FED. AID PROJECT				
SHEET NO. S74 OF 5108				



SPAN 1 ROOF FRAMING PLAN



SECTION THRU ROOF



SECTION A-A
(Multi-use Path Bridge Span 1)

Notes:

- Dimensions shown for the roof purlin spacing are based on a particular manufactured standing seam roof panel. Actual spacing of purlins may vary subject to approval of the engineer. Contractor to verify and adjust structure elements as required. Cost is included with "Roofing System".
- Roof Ridge lines and widths shall be continuous across all MUP Bridge spans.

* Dimensions are based on a particular Pre-Fabricated Truss manufacturer's design.

REVISIONS	
NAME	DATE



ILLINOIS DEPARTMENT OF TRANSPORTATION
MUP BRIDGE -
SPAN 1 ROOF FRAMING PLAN
 MULTI-USE PATH BRIDGE OVER THE FOX RIVER
 STRUCTURE NUMBER 045-3164
 KANE COUNTY FAP 361 SECTION 06-00214-20-BR
 STATION 572+37.71
 DATE: JANUARY 16, 2009
 DESIGNED: DFM
 CHECKED: KPZ
 PUBLIC WATERS
 DRAWN: SCW
 CHECKED: KPZ

h:\3005\3.0 phase 11 deliverables\3.3 structure\drawings\Final\045-3164 MUP Bridge RoofFrame.dgn
 1/15/2009