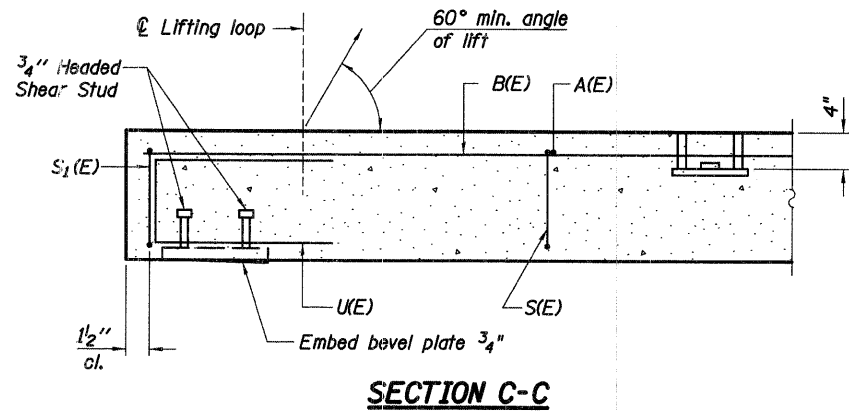
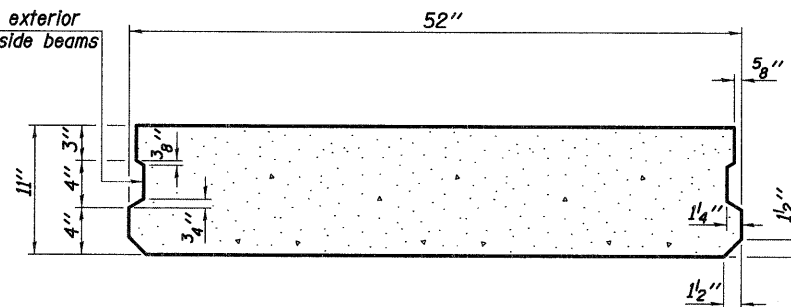


F.A.P. DIST.	SECTION	COUNTY	TOTAL SHEETS	SHEET NO.
361	06-00214-20-BR	KANE	320	185
STA. 511+80.00		TO STA. 609+14.92		
FED. ROAD DIST. NO. 7		ILLINOIS FED. AID PROJECT		
		SHEET NO. S80 OF S108		

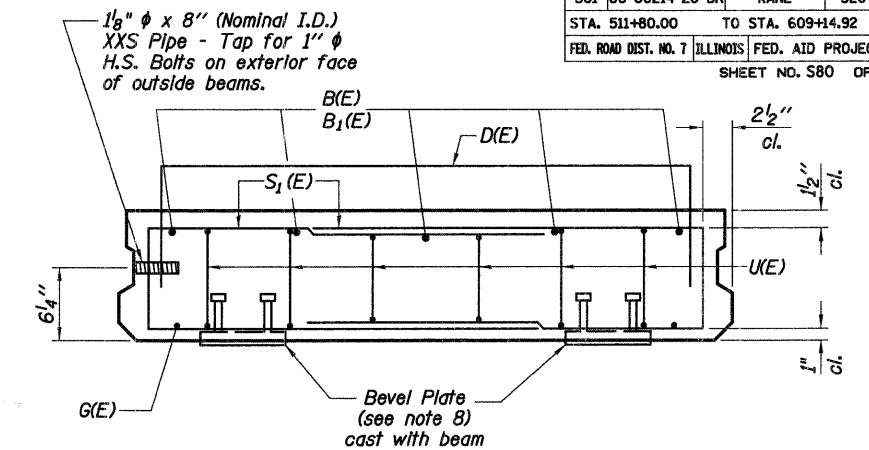


**SECTION C-C**

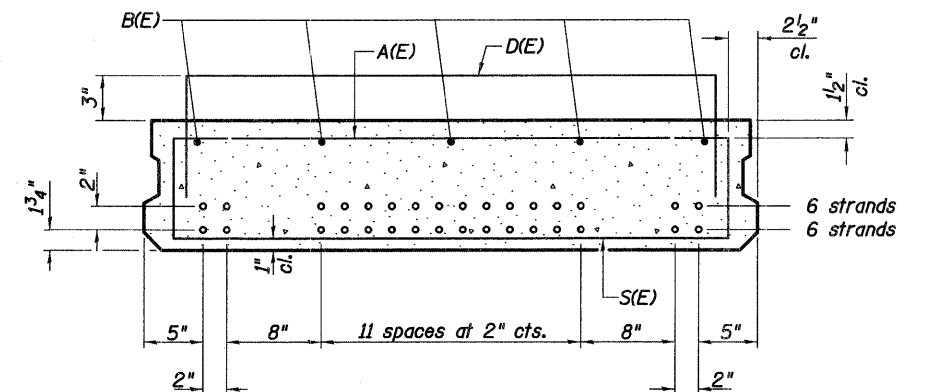
Omit key on exterior face of outside beams



**SECTION A-A**  
(Showing dimensions)

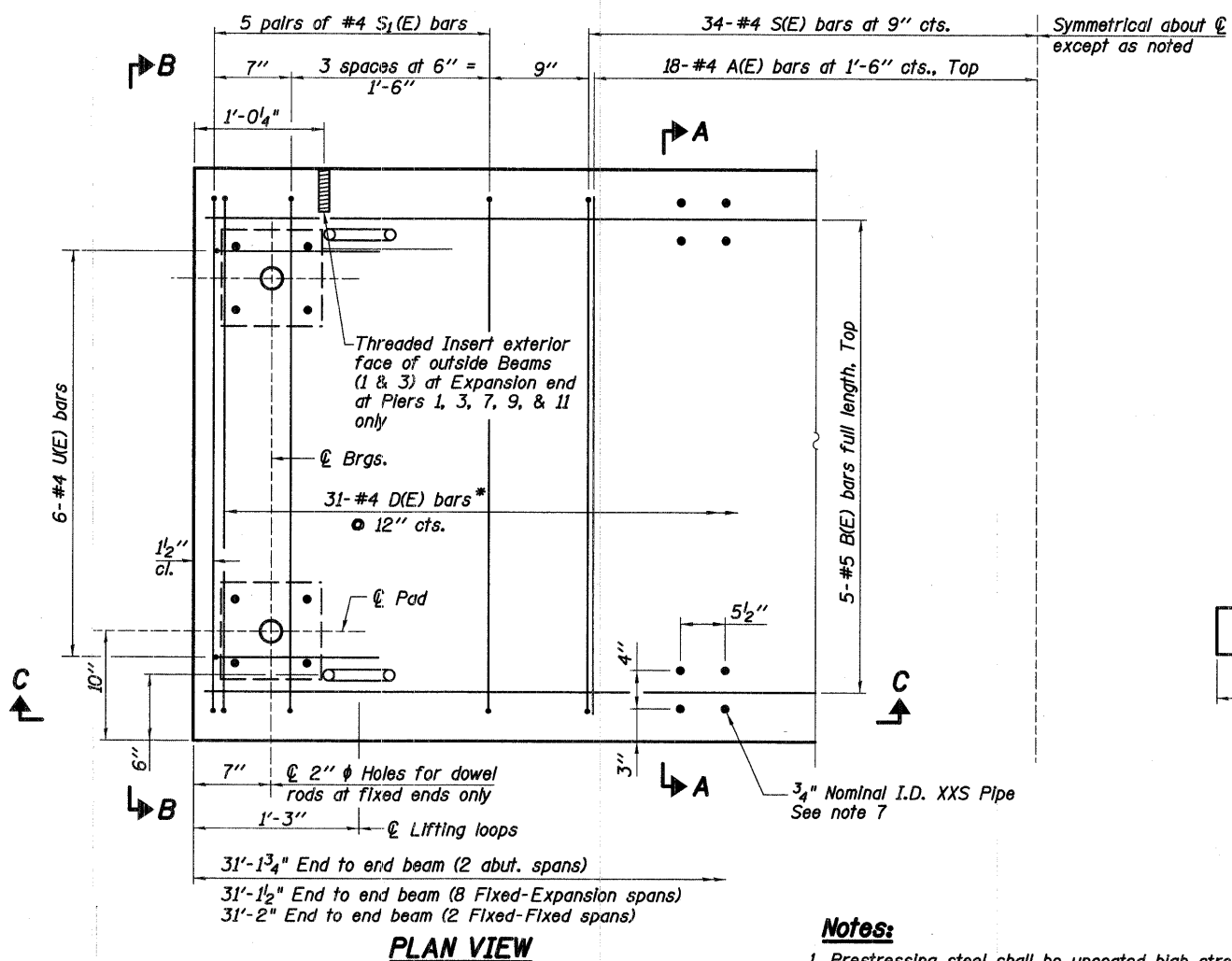


**VIEW B-B**



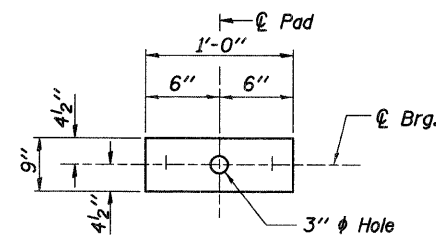
**SECTION A-A**

(Showing reinforcement and permissible strand locations)  
Note: Place the number of strands specified in each row symmetrically about the centerline of beam in the permissible strand locations shown.



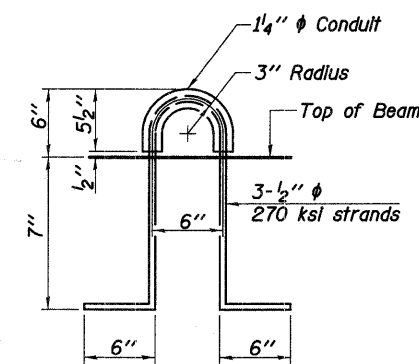
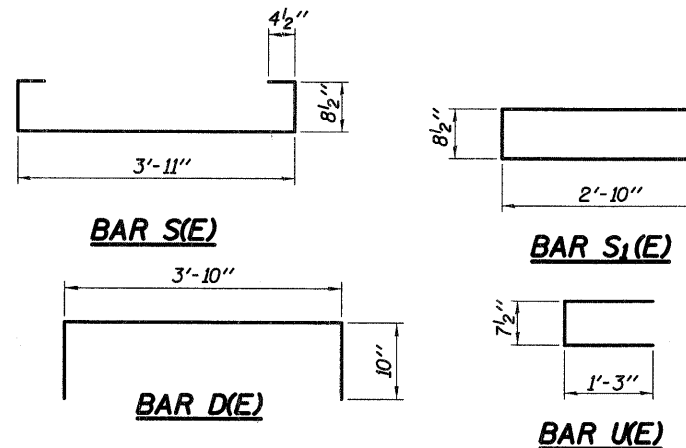
**PLAN VIEW**

\* Only present in beams 1 & 3



**FABRIC BEARING PAD**  
**FIXED**

Note: Omit holes when using expansion bearings.



**LIFTING LOOP DETAIL**

**BAR LIST**  
**ONE BEAM ONLY**  
(For information only)

Bar	No.	Size	Length	Shape
A(E)	18	#4	3'-11"	—
B(E)	5	#5	30'-10"	—
D(E)*	31	#5	5'-6"	□
S(E)	34	#4	6'-1"	□
S1(E)	20	#4	6'-5"	□
U(E)	12	#4	3'-2"	□

\* Only present in beams 1 & 3

**BILL OF MATERIAL**

Precast Prestressed Conc. Deck Bms. (11" depth)	Sq. Ft.	4,885
---	---------	-------

**Notes:**

1. Prestressing steel shall be uncoated high strength, low relaxation 7-wire strand, Grade 270. The nominal diameter shall be 1/2" and the nominal cross-sectional area shall be 0.153 sq. in.
2. Reinforcement Bars shall conform to ASTM A 706, Grade 60. See special provisions.
3. Two 1/8" fabric adjusting shims of the dimensions of the bearing pad shall be provided for each bearing pad location. Cost of fabric bearing pads and Dowel Bars shall be included in Precast deck beams.
4. A minimum 2 1/2" diameter lifting pin shall be used to engage the lifting loops during handling.
5. Corrosion Inhibitor, per Article 1020.05(b)(12) and 1021.06 of the Standard Specifications, shall be used in the concrete for precast prestressed concrete deck beams.
6. Compressive strength of prestressed concrete, f'c, shall be 6000 psi.
7. Compressive strength of prestressed concrete at release, f'ci, shall be 5000 psi.
8. See Sheet S81 of S108 for Bicycle Rolling Anchor Details and Spacing.
9. See Sheet S82 of S108 Bevel Plate Details.

**Baker**

Baker Engineering, Inc.

REVISIONS	
NAME	DATE

ILLINOIS DEPARTMENT OF TRANSPORTATION  
**MUP RAMP -**  
**11" X 52" P.P.C. DECK BEAM**  
MULTI-USE PATH BRIDGE OVER THE FOX RIVER PUBLIC WATERS  
STRUCTURE NUMBER 045-3164  
KANE COUNTY FAP 361 SECTION 06-00214-20-BR  
STATION 572+37.71 DESIGNED: DFM DRAWN: SGW  
DATE: JANUARY 16, 2009 CHECKED: KPZ CHECKED: KPZ