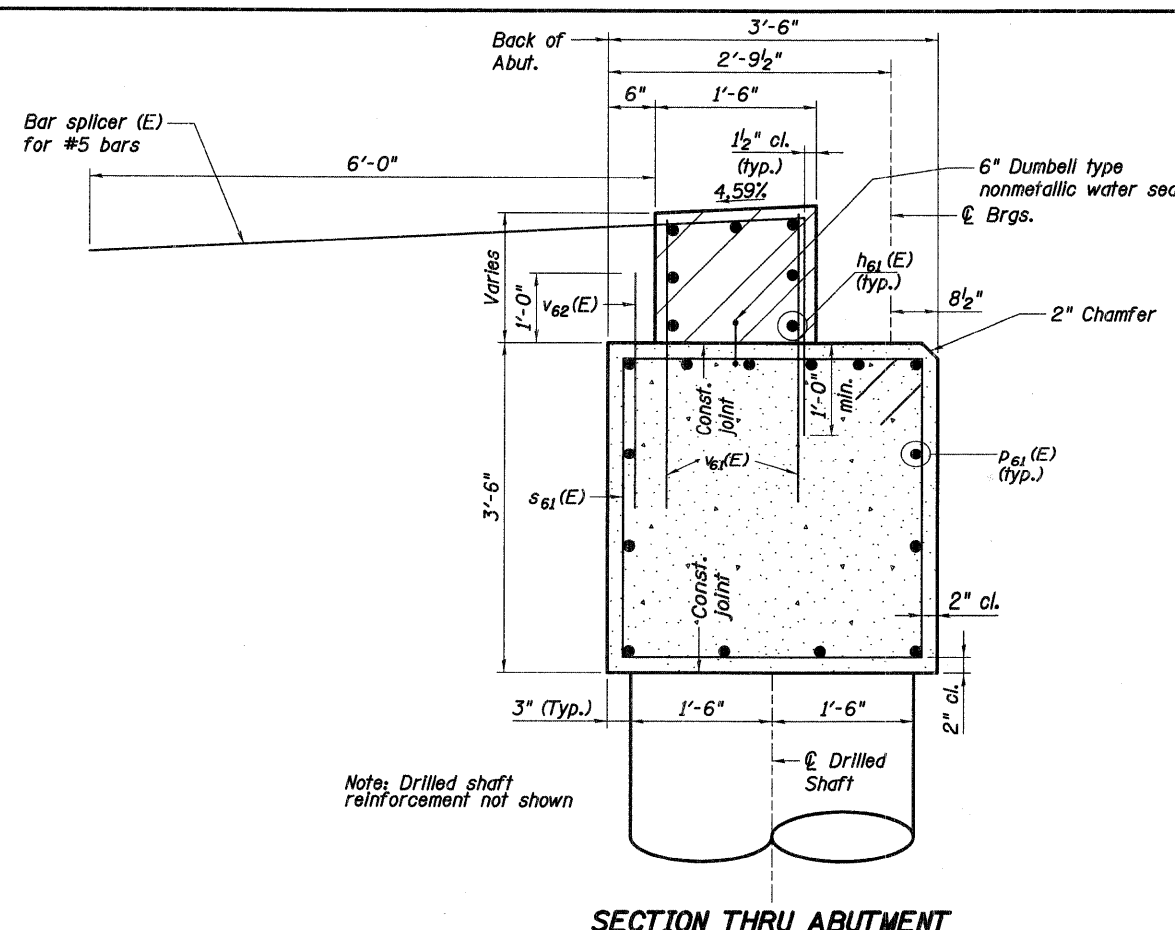
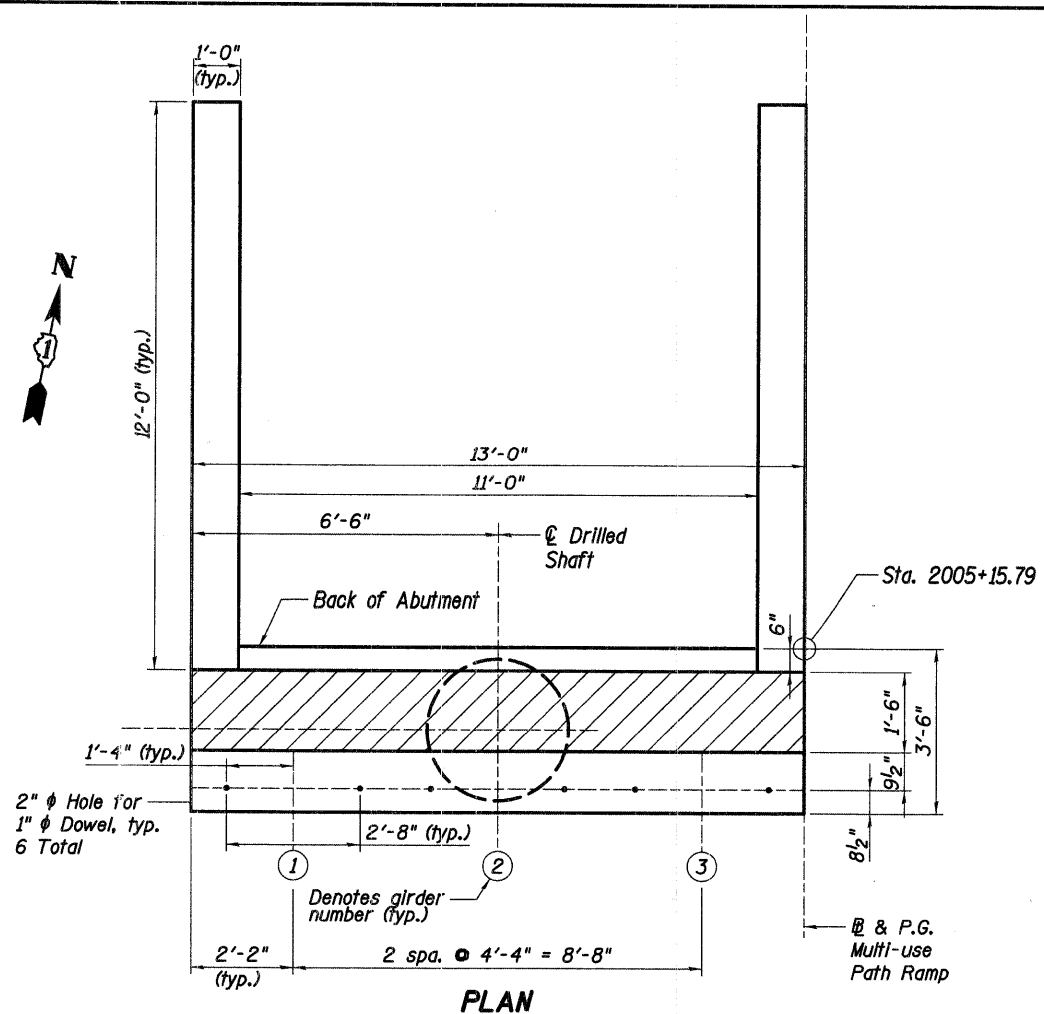


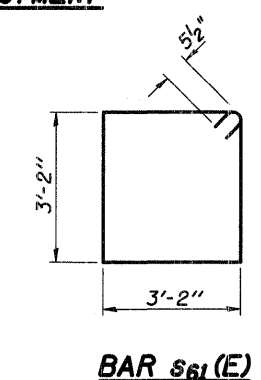
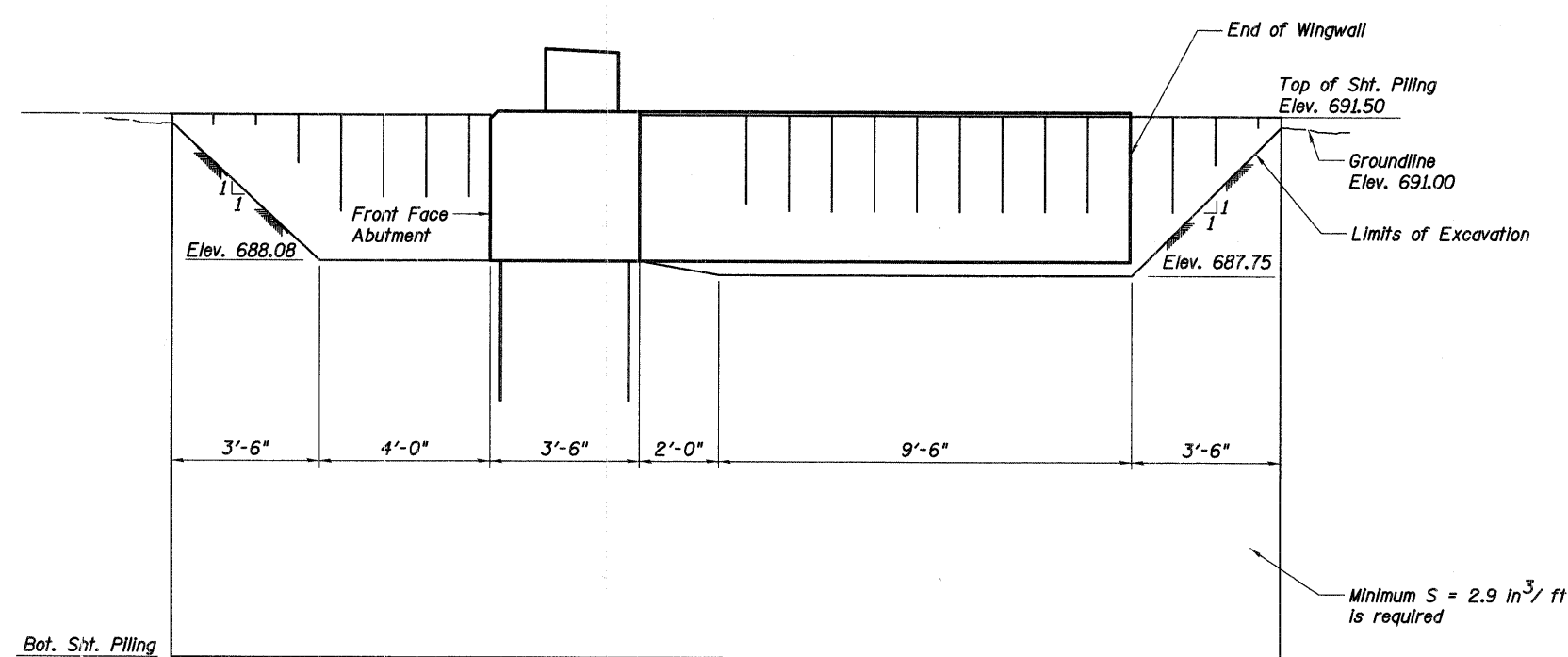
F.A.P. RTE.	SECTION	COUNTY	TOTAL SHEETS	SHEET NO.
361	06-00214-20-BR	KANE	320	190
STA. 511+80.00		TO STA. 609+14.92		
FED. ROAD DIST. NO. 7		ILLINOIS FED. AID PROJECT		
SHEET NO. S85 OF S108				



**MUP RAMP - NORTH ABUTMENT
BILL OF MATERIAL**

Bar	No.	Size	Length	Shape
h ₆₁ (E)	7	# 6	12'-8"	—
h ₆₂ (E)	24	# 6	11'-2"	—
p ₆₁ (E)	14	# 7	12'-8"	—
p ₆₂ (E)	24	# 5	4'-0"	—
s ₆₁ (E)	14	# 4	13'-7"	□
s ₆₂	1	# 5	66'-3"	WWW
v ₆₁ (E)	28	# 5	4'-0"	—
v ₆₂ (E)	12	# 5	3'-0"	—
v ₆₃ (E)	52	# 5	3'-4"	—
v ₆₄ (E)	52	# 5	3'-3"	—
v ₆₅	16	# 8	36'-0"	—
v ₆₇	16	# 10	38'-9"	—
Concrete Structures			Cu. Yd.	11
Reinforcement Bars			Pound	5,600
Reinforcement Bars, Epoxy Coated			Pound	1,640
Structure Excavation			Cu. Yd.	17
Bar Splicers			Each	12

* length is height of spiral, provide minimum lap length of 2'-0"



Notes:

- If the Contractor chooses to alter the temporary cantilevered sheet piling design requirements shown on the plans, a design submittal including plan details and calculations will be required for review and acceptance by the Engineer.
- For additional abutment details and notes see sheet S84 of S108.

REVISIONS	
NAME	DATE

ILLINOIS DEPARTMENT OF TRANSPORTATION
**MUP RAMP-
NORTH ABUTMENT DETAILS II**

MULTI-USE PATH BRIDGE OVER THE FOX RIVER
PUBLIC WATERS
STRUCTURE NUMBER 045-3164
KANE COUNTY FAP 361 SECTION 06-00214-20-BR
STATION 572+37.71 DESIGNED: DAP DRAWN: TMA
DATE: JANUARY 16, 2009 CHECKED: KPZ CHECKED: KPZ



h:\3005\3.0 phase 11 deliverables\3.3 structure\drawings\final\045-3164 MUP N Abut2.dgn 1/15/2009