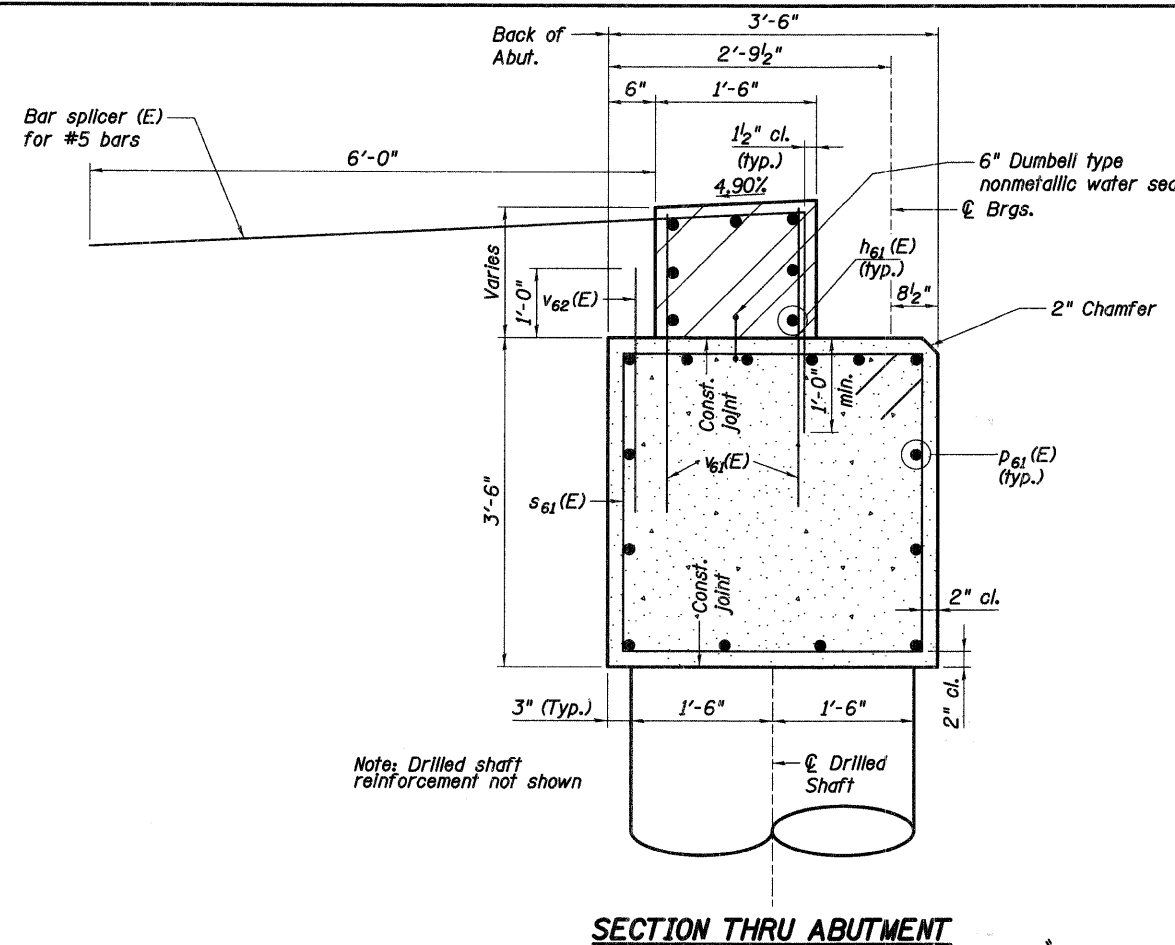
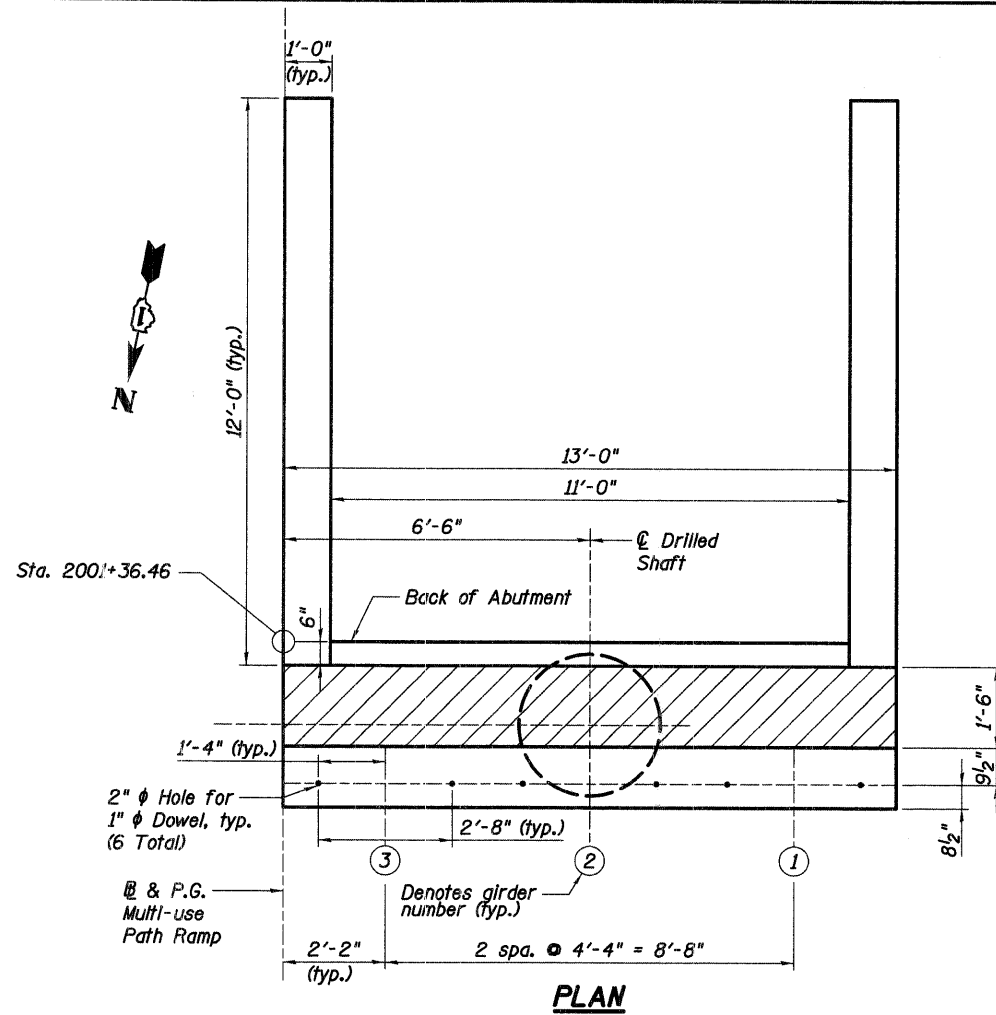


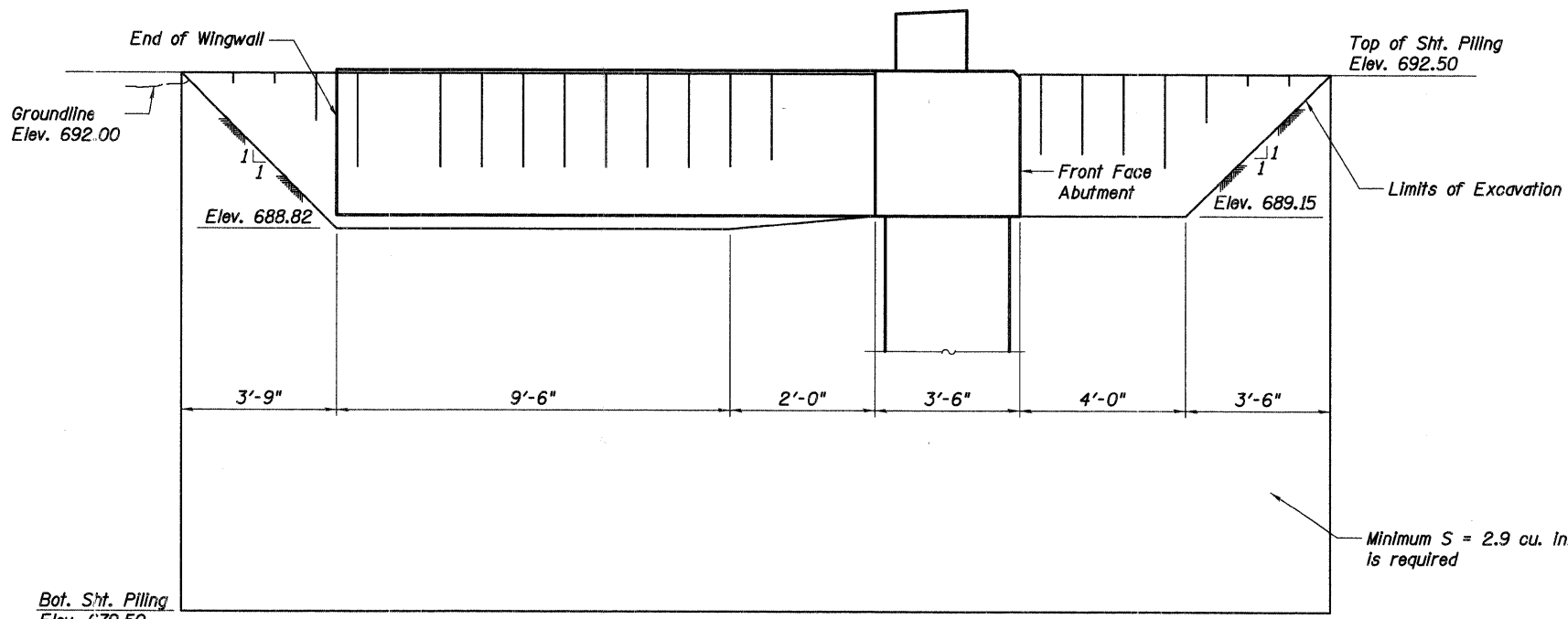
F.A.P. RTE.	SECTION	COUNTY	TOTAL SHEETS	SHEET NO.
361	06-00214-20-BR	KANE	320	192
STA. 511+80.00		TO STA. 609+14.92		
FED. ROAD DIST. NO. 7		ILLINOIS FED. AID PROJECT		
SHEET NO. S87 OF S108				



**MUP RAMP - SOUTH ABUTMENT  
BILL OF MATERIAL**

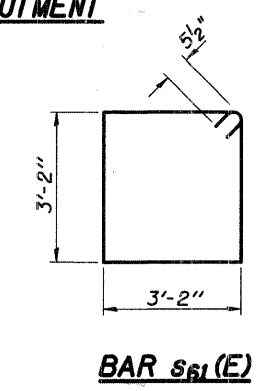
Bar	No.	Size	Length	Shape
h61 (E)	7	# 6	12'-8"	—
h62 (E)	24	# 6	11'-2"	—
pd1 (E)	14	# 7	12'-8"	—
pd2 (E)	24	# 5	4'-0"	—
sd1 (E)	14	# 5	13'-7"	□
sd2	1	# 4	65'-3"	WWW
vd1 (E)	28	# 5	4'-0"	—
vd2 (E)	12	# 5	3'-0"	—
vd3 (E)	52	# 5	3'-4"	—
vd4 (E)	52	# 5	3'-3"	—
vs1	16	# 8	36'-0"	—
vs2	16	# 10	37'-0"	—
Concrete Structures			Cu. Yd.	11
Reinforcement Bars			Pound	4,970
Reinforcement Bars, Epoxy Coated			Pound	1,710
Structure Excavation			Cu. Yd.	18
Bar Splicers			Each	12

\* length is height of spiral, provide minimum lap length of 2'-0"



**SOUTH MUP RAMP ABUTMENT  
TEMPORARY SOIL RETENTION SYSTEM DETAILS**

The top and bottom elevation and length shown for the sheet piling are estimated



**Notes:**

1. If the Contractor chooses to alter the temporary cantilevered sheet piling design requirements shown on the plans, a design submittal including plan details and calculations will be required for review and acceptance by the Engineer.
2. For additional abutment details and notes see sheet S86 of S108.



REVISIONS	
NAME	DATE

ILLINOIS DEPARTMENT OF TRANSPORTATION  
**MUP RAMP -  
SOUTH ABUTMENT DETAILS II**  
MULTI-USE PATH BRIDGE OVER THE FOX RIVER PUBLIC WATERS  
STRUCTURE NUMBER 045-3164  
KANE COUNTY FAP 361 SECTION 06-00214-20-BR  
STATION 572+37.71 DESIGNED: DAP DRAWN: TMA  
DATE: JANUARY 16, 2009 CHECKED: KPZ CHECKED: KPZ

h:\3005\3.0 phase 11 deliverables\3.3 structure\drawings\Final\045-3164 MUP S Abut2.dgn 1/15/2009