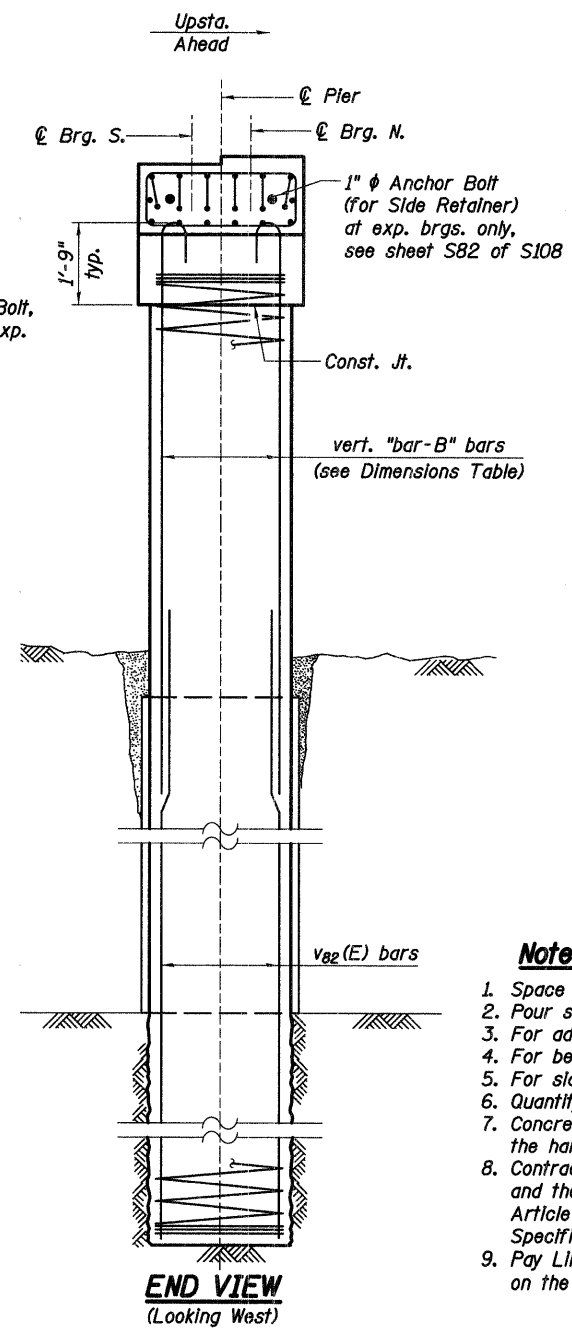
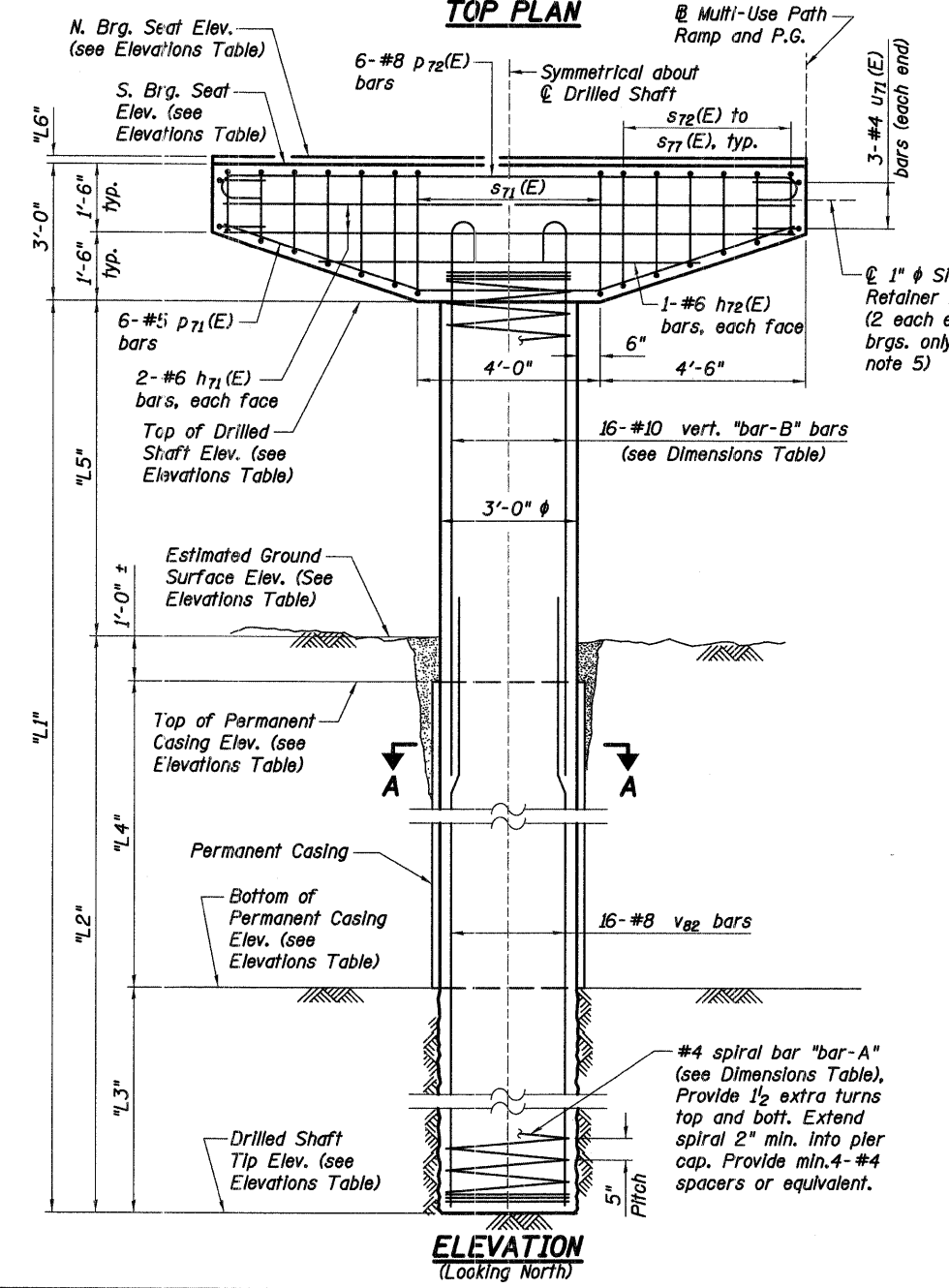
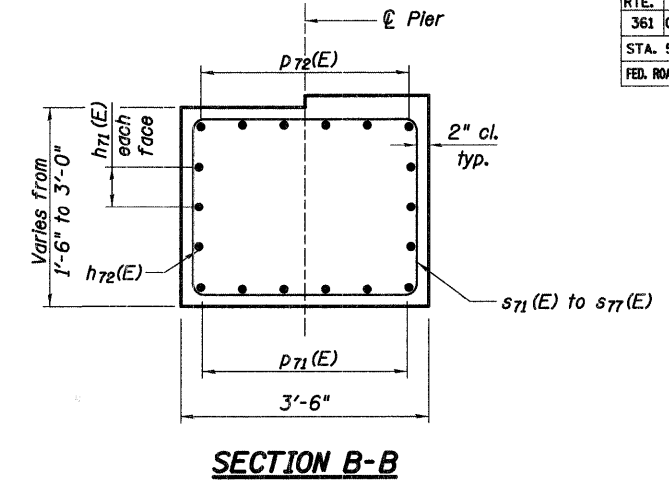
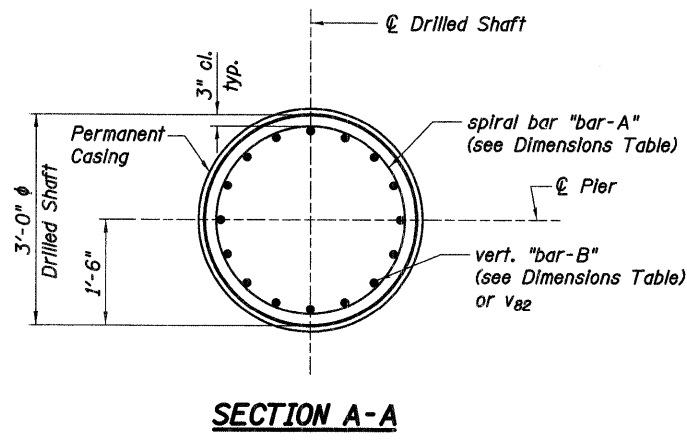
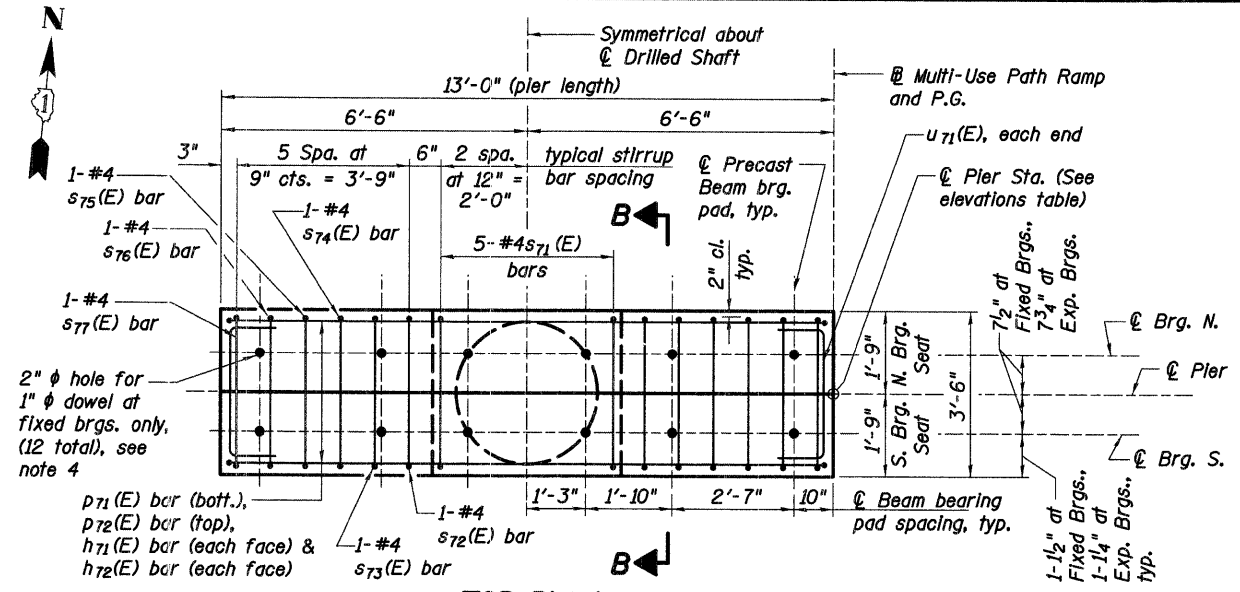


F.A.P. RTE.	SECTION	COUNTY	TOTAL SHEETS	SHEET NO.
361	06-00214-20-BR	KANE	320	193
STA. 511+80.00		TO STA. 609+14.92		
FED. ROAD DIST. NO. 7		ILLINOIS FED. AID PROJECT		
SHEET NO. S88 OF S108				



Support	Centerline Pier Sta.	Bearing Type	Drilled Shaft Tip Elev.	Bottom of Permanent Casing Elev.	Top of Permanent Casing Elev.	Estimated Ground Surface Elev.	Top of Drilled Shaft Elev.	South Brg. Seat Elev.	North Brg. Seat Elev.
Pier 1	2001+69.88	EXP.	624.00	628.00	691.10	692.10	691.18	694.18	694.24
Pier 2	2002+01.13	FIX.	622.00	637.00	690.50	691.50	692.71	695.71	695.77
Pier 3	2002+32.38	EXP.	622.00	637.00	690.40	691.40	694.24	697.24	697.30
Pier 4	2002+63.63	FIX.	622.00	637.00	690.40	691.40	695.77	698.77	698.83
Pier 5	2002+94.88	FIX.	624.00	638.00	690.50	691.50	696.78	699.78	699.78
Pier 6	2003+26.13	FIX.	624.00	638.00	690.50	691.50	697.09	700.09	700.09
Pier 7	2003+57.38	EXP.	624.00	632.00	690.50	691.50	695.76	698.82	698.76
Pier 8	2003+88.63	FIX.	624.00	632.00	690.50	691.50	694.33	697.39	697.33
Pier 9	2004+19.88	EXP.	624.00	632.00	690.40	691.40	692.89	695.95	695.89
Pier 10	2004+51.13	FIX.	622.00	626.00	690.40	691.40	691.46	694.52	694.46
Pier 11	2004+82.38	EXP.	622.00	626.00	690.03	691.40	690.03	693.09	693.03

Support	"L1"	"L2"	"L3"	"L4"	"L5" *	"L6" **	"Bar-A"	"Bar-B"
Pier 1	67'-2 1/4"	68'-1 1/4"	4'-0"	63'-1 1/4"	-0'-11"	0'-0"	sp71(E)	v71(E)
Pier 2	70'-8 5/8"	69'-6"	15'-0"	53'-6"	1'-2 5/8"	0'-0 3/4"	sp72(E)	v72(E)
Pier 3	72'-2 7/8"	69'-4 3/4"	15'-0"	53'-4 3/4"	2'-10 1/8"	0'-0"	sp73(E)	v73(E)
Pier 4	73'-9 1/4"	69'-4 3/4"	15'-0"	53'-4 3/4"	4'-4 1/2"	0'-0"	sp74(E)	v74(E)
Pier 5	72'-9 1/4"	67'-6"	14'-0"	52'-6"	5'-3 1/4"	0'-0"	sp75(E)	v75(E)
Pier 6	73'-1"	67'-6"	14'-0"	52'-6"	5'-7"	0'-0"	sp76(E)	v76(E)
Pier 7	71'-9 1/8"	67'-6"	8'-0"	58'-6"	4'-3 1/8"	0'-0"	sp77(E)	v77(E)
Pier 8	70'-3 7/8"	67'-6"	8'-0"	58'-6"	2'-9 7/8"	0'-0"	sp78(E)	v78(E)
Pier 9	68'-10 5/8"	67'-4 3/4"	8'-0"	58'-4 3/4"	1'-5 7/8"	0'-0"	sp79(E)	v79(E)
Pier 10	69'-5 1/2"	69'-4 3/4"	4'-0"	64'-4 3/4"	0'-0 5/8"	0'-0"	sp80(E)	v80(E)
Pier 11	68'-0 3/8"	69'-4 3/4"	4'-0"	64'-0 3/8"	-1'-4 1/2"	0'-0"	sp81(E)	v81(E)

* Negative sign for "L5" indicates that the top of drilled shaft elevation is lower than the estimated ground elevation.
 ** Negative sign for "L6" indicates that the north bearing seat elevation is lower than the south bearing seat elevation.

Notes:

- Space reinforcement in cap to miss dowels and side retainer anchor bolts.
- Pour steps monolithically with cap.
- For additional pier details, see sheets S89 and S90 of S108.
- For bearing dowel details, see sheet S82 of S108.
- For side retainer anchor bolt details, see sheet S82 of S108.
- Quantity of Drilled Shaft above ground is included with "Drilled Shaft In Soil".
- Concrete Sealer shall be applied to the bearing seat as well as both faces of the hammerhead pier cap at expansion piers 1, 3, 7, 9, and 11.
- Contractor is responsible for determining the permanent casing thickness and the actual bottom of permanent casing elevation to be used. See Article 516.06(d) and 1006.05(d) of the Standard Specifications.
- Pay Limits for the Permanent Casing shall be based on the minimum length shown.

MINIMUM BAR LAP
 #8 = 4'-6"

REVISIONS	
NAME	DATE

ILLINOIS DEPARTMENT OF TRANSPORTATION
MUP RAMP - PIER DETAILS I
 MULTI-USE PATH BRIDGE OVER THE FOX RIVER
 STRUCTURE NUMBER 045-3164
 KANE COUNTY FAP 361 SECTION 06-00214-20-BR
 STATION 572+37.71 DESIGNED: DAP DRAWN: SGW
 DATE: JANUARY 16, 2009 CHECKED: KPZ RECHECKED: KPZ

Baker
 Baker Engineering, Inc.

h:\13005\3.0 phase II deliverables\3.3 structure\drawings\final\045-3164 MUP Ramp Piers01.dgn
 1/15/2009