


F.A.P. RTE.	SECTION	COUNTY	TOTAL SHEETS	SHEET NO.
361	06-00214-20-BR	KANE	320	198
STA. 511+80.00		TO STA. 609+14.92		
FED. ROAD DIST. NO. 7 ILLINOIS FED. AID PROJECT				
SHEET NO. S93 OF S108				


**BORING NO. S1B-1**

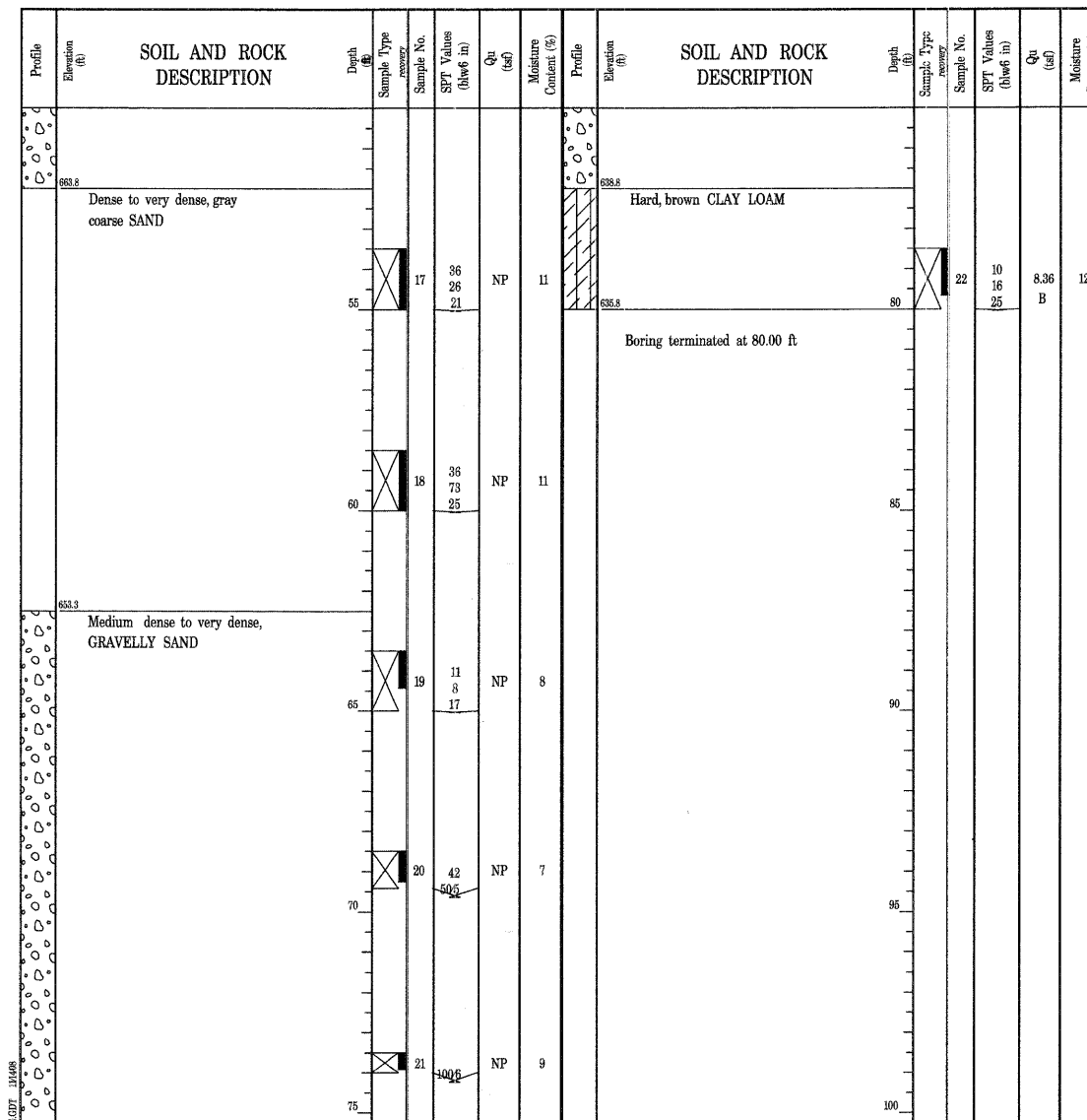
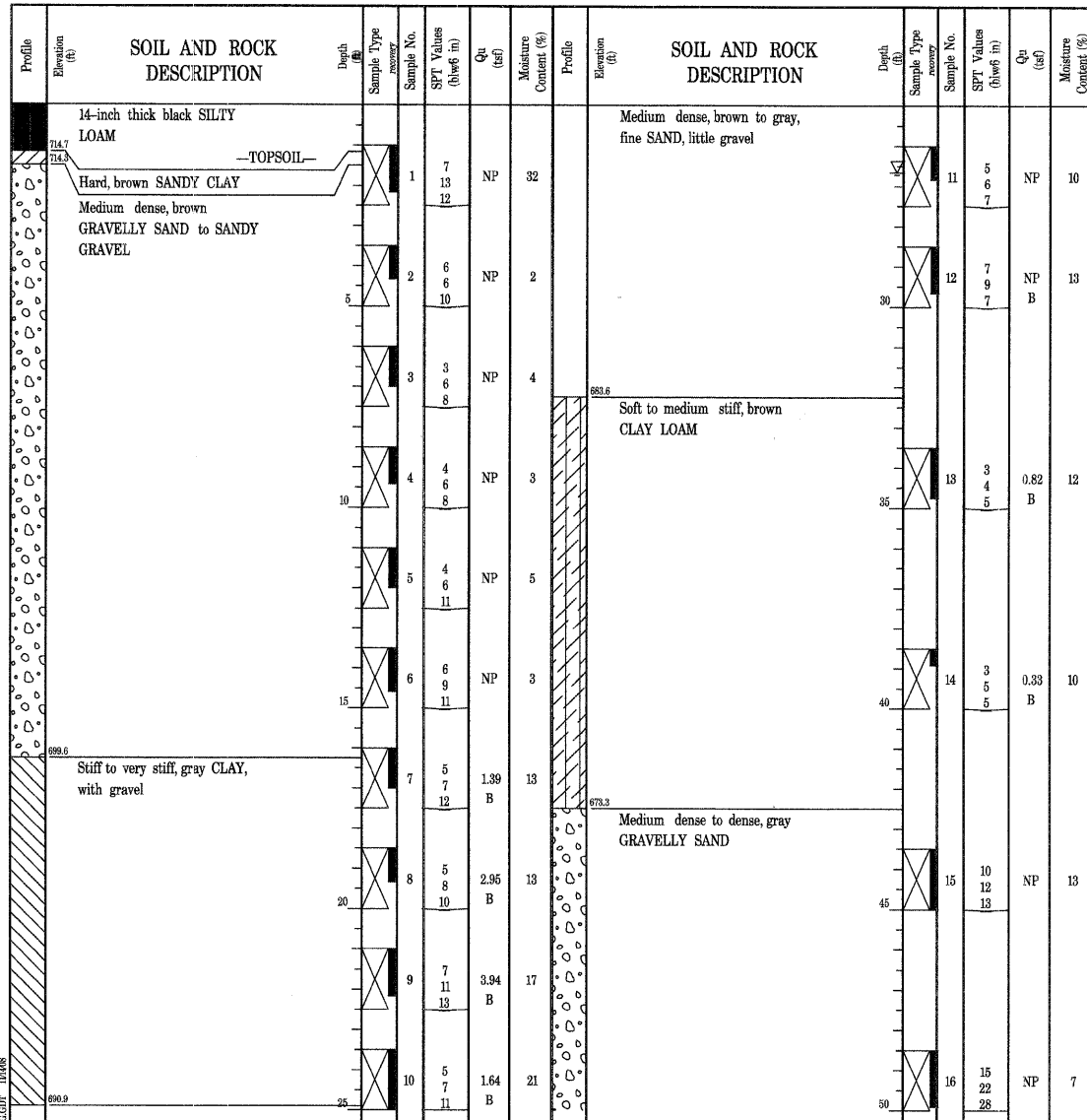
**BORING NO. S1B-1**

**BORING LOG S1B-1** Page 1 of 3

 <p>Wang Engineering, Inc. Consulting Geotechnical and Environmental Engineers wangeng@wangeng.com 1145 Main Street Lombard, IL 60148 Telephone: 630 953-9928 Fax: 630 953-9938</p>	<p>WEI Job No.: 707-11-01</p> <p>Client: Baker Engineering, Inc.</p> <p>Project: New Stearns Road over Fox River</p> <p>Location: Sec. 2 and 3, T. 40 N, R. 8 E of Geneva Quadrangle</p>	<p>Datum: NGVD</p> <p>Elevation: 715.83 ft</p> <p>North: 1934488.61 ft</p> <p>East: 994504.83 ft</p> <p>Station: 566+18</p> <p>Offset: 18.0 RT</p>
--	--	--

**BORING LOG S1B-1** Page 2 of 2

 <p>Wang Engineering, Inc. Consulting Geotechnical and Environmental Engineers wangeng@wangeng.com 1145 Main Street Lombard, IL 60148 Telephone: 630 953-9928 Fax: 630 953-9938</p>	<p>WEI Job No.: 707-11-01</p> <p>Client: Baker Engineering, Inc.</p> <p>Project: New Stearns Road over Fox River</p> <p>Location: Sec. 2 and 3, T. 40 N, R. 8 E of Geneva Quadrangle</p>	<p>Datum: NGVD</p> <p>Elevation: 715.83 ft</p> <p>North: 1934488.61 ft</p> <p>East: 994504.83 ft</p> <p>Station: 566+18</p> <p>Offset: 18.0 RT</p>
--	--	--



GENERAL NOTES		WATER LEVEL DATA	
Begin Drilling	12-13-2007	Complete Drilling	12-13-2007
Drilling Contractor	TSC	Drill Rig	CME-55 ATV
Driller	F & C	Logger	J. Kasnick
Checked by	E. Datz	Time After Drilling	NA
Drilling Method	3.25" ID HSA	Depth to Water	NA
While Drilling		26.66 ft	
At Completion of Drilling		NA	

The stratification lines represent the approximate boundary between soil types; the actual transition may be gradual.

GENERAL NOTES		WATER LEVEL DATA	
Begin Drilling	12-13-2007	Complete Drilling	12-13-2007
Drilling Contractor	TSC	Drill Rig	CME-55 ATV
Driller	F & C	Logger	J. Kasnick
Checked by	E. Datz	Time After Drilling	NA
Drilling Method	3.25" ID HSA	Depth to Water	NA
While Drilling		26.66 ft	
At Completion of Drilling		NA	

The stratification lines represent the approximate boundary between soil types; the actual transition may be gradual.

h:\13005\3.0 phase II deliverables\3.3 structure\drawings\Final\045-3166 Boring Log 3.dgn 7/5/2009



REVISIONS	
NAME	DATE

ILLINOIS DEPARTMENT OF TRANSPORTATION

**SOIL BORING LOG III**

MULTI-USE PATH BRIDGE OVER THE FOX RIVER  
STRUCTURE NUMBER 045-3164  
KANE COUNTY FAP 361 SECTION 06-00214-20-BR  
STATION 572+37.71  
DATE: JANUARY 16, 2009  
DESIGNED: WEI  
DRAWN: SGW  
CHECKED: WEI  
CHECKED: DFM