

F.A.P. RTE.	SECTION	COUNTY	TOTAL SHEETS	SHEET NO.
361	06-00214-20-BR	KANE	320	209
STA. 511+80.00		TO STA. 609+14.92		
FED. ROAD DIST. NO. 7 ILLINOIS FED. AID PROJECT				
SHEET NO. S104 OF S108				

BORING NO. SIB-1

BORING NO. SIB-1

BORING LOG SIB-1 Page 1 of 2

Wang Engineering, Inc.
Consulting Geotechnical and Environmental Engineers
wangeng@wangeng.com
1145 Main Street
Lombard, IL 60148
Telephone: 630 953-9928
Fax: 630 953-9938

WEI Job No.: 707-11-01
Client: Baker Engineering, Inc.
Project: New Stearns Road over Fox River
Location: Sec. 2 and 3, T. 40 N, R. 8 E. of Geneva Quadrangle

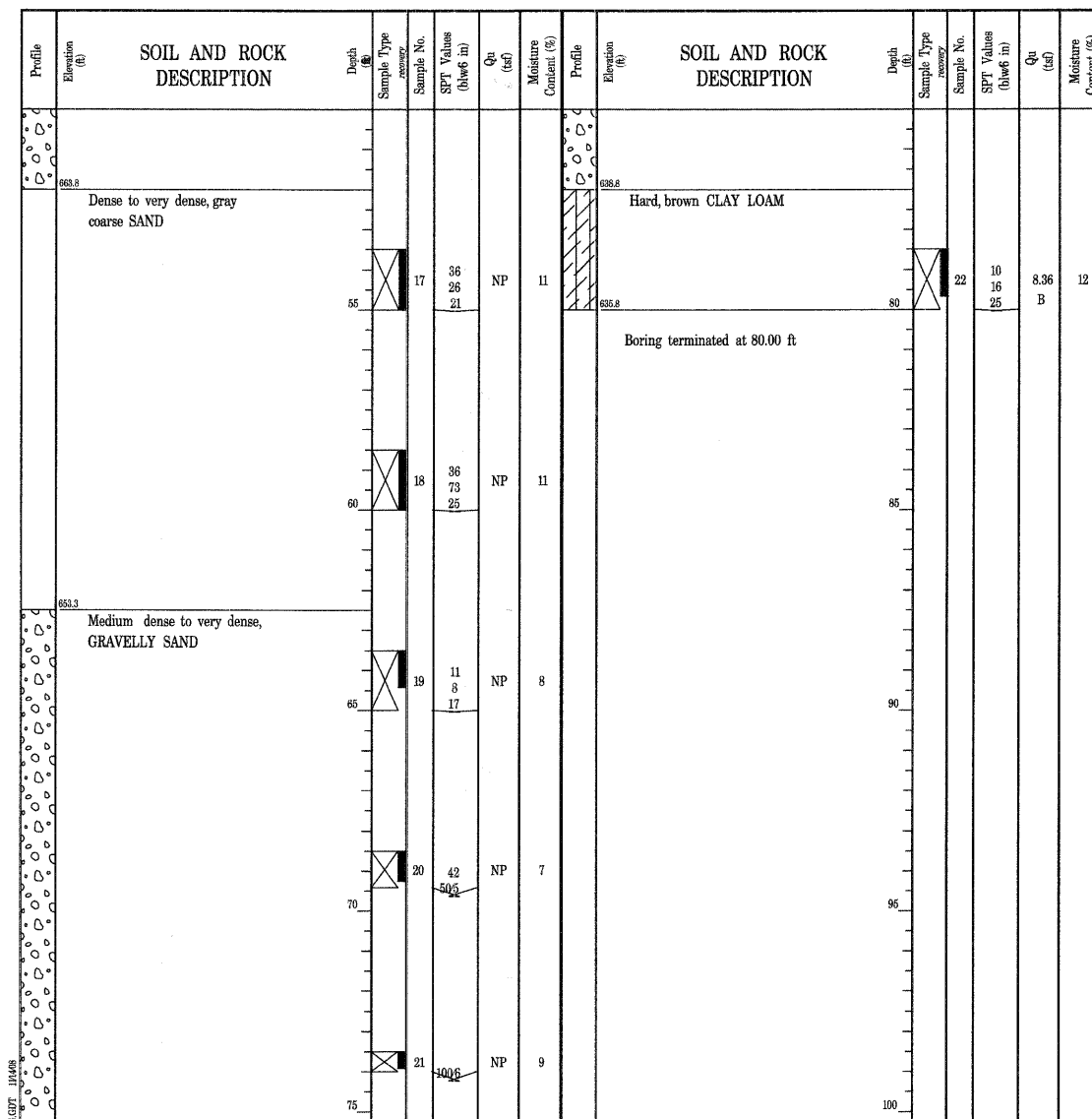
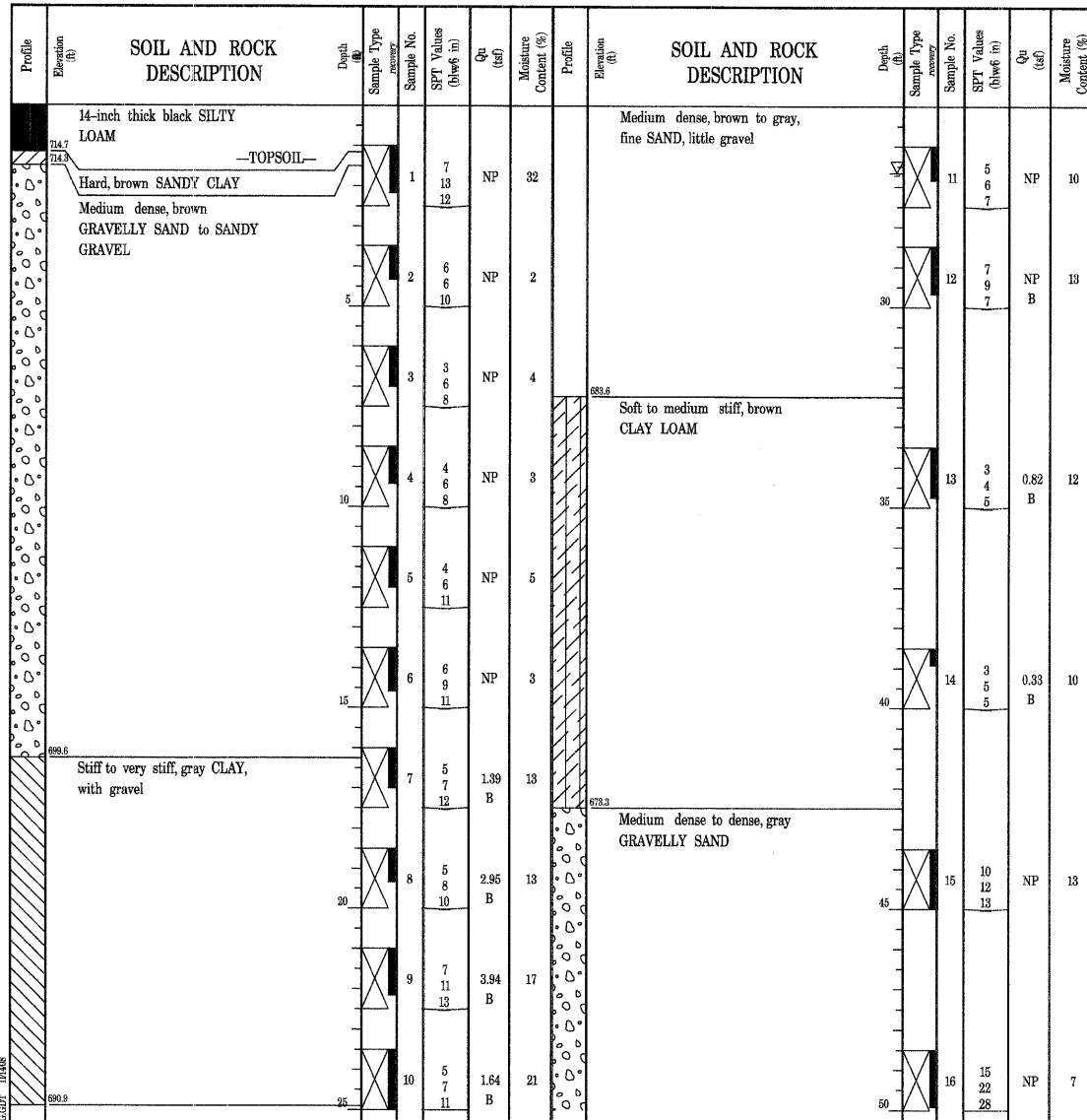
Datum: NGVD
Elevation: 715.83 ft
North: 1934488.61 ft
East: 994504.83 ft
Station: 566+18
Offset: 18.0 RT

BORING LOG SIB-1 Page 2 of 2

Wang Engineering, Inc.
Consulting Geotechnical and Environmental Engineers
wangeng@wangeng.com
1145 Main Street
Lombard, IL 60148
Telephone: 630 953-9928
Fax: 630 953-9938

WEI Job No.: 707-11-01
Client: Baker Engineering, Inc.
Project: New Stearns Road over Fox River
Location: Sec. 2 and 3, T. 40 N, R. 8 E. of Geneva Quadrangle

Datum: NGVD
Elevation: 715.83 ft
North: 1934488.61 ft
East: 994504.83 ft
Station: 566+18
Offset: 18.0 RT



GENERAL NOTES

Begin Drilling: 12-13-2007 Complete Drilling: 12-13-2007

Drilling Contractor: TSC Drill Rig: CME-55 ATV

Driller: F & C Logger: J. Kasnick Checked by: E. Datz

Drilling Method: 3.25" ID. HSA

WATER LEVEL DATA

While Drilling: 26.66 ft

At Completion of Drilling: NA

Time After Drilling: NA

Depth to Water: NA

The stratification lines represent the approximate boundary between soil types; the actual transition may be gradual.

GENERAL NOTES

Begin Drilling: 12-13-2007 Complete Drilling: 12-13-2007

Drilling Contractor: TSC Drill Rig: CME-55 ATV

Driller: F & C Logger: J. Kasnick Checked by: E. Datz

Drilling Method: 3.25" ID. HSA

WATER LEVEL DATA

While Drilling: 26.66 ft

At Completion of Drilling: NA

Time After Drilling: NA

Depth to Water: NA

The stratification lines represent the approximate boundary between soil types; the actual transition may be gradual.

REVISIONS	
NAME	DATE

ILLINOIS DEPARTMENT OF TRANSPORTATION

SOIL BORING LOG XIV

MULTI-USE PATH BRIDGE OVER THE FOX RIVER PUBLIC WATERS
STRUCTURE NUMBER 045-3164

KANE COUNTY FAP 361 SECTION 06-00214-20-BR
STATION 572+37.71 DESIGNED: WEI DRAWN: SCW
DATE: JANUARY 16, 2009 CHECKED: WEI CHECKED: DFM



h:\3005\3.0 phase II deliverables\3.3 structure\drawings\Final\045-3166 Boring Log 14.dgn 1/15/2009