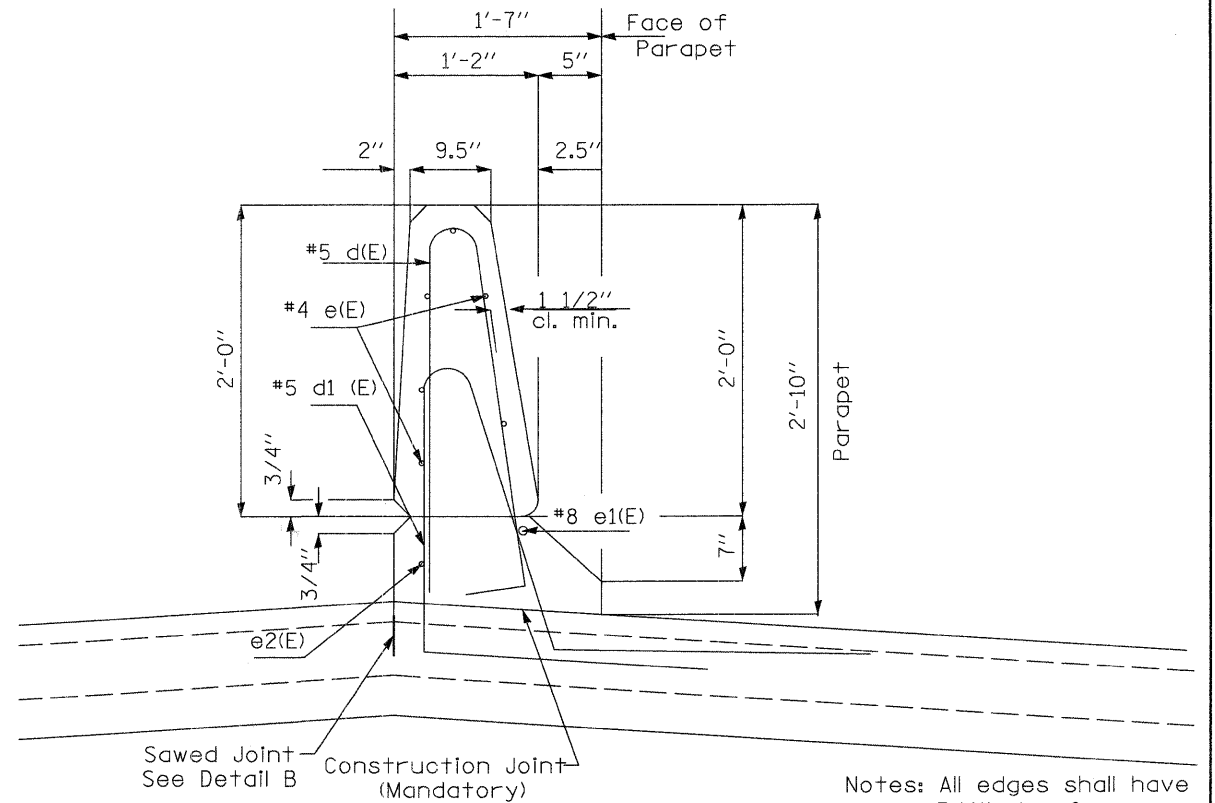


**CROSS SECTION**

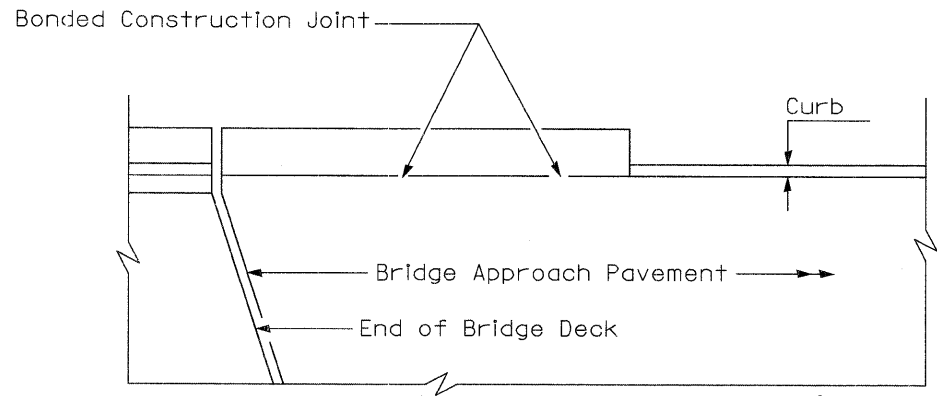
(See Plan for Dimensions not shown)  
 (WESTBOUND BRIDGE - NORTH ARM OF BREWSTER CREEK)

NOTE: POST SPACING ON BICYCLE OR PARAPET RAILING SHALL BE NO GREATER THAN 10'-0" AND SPACED EQUIDISTANT.

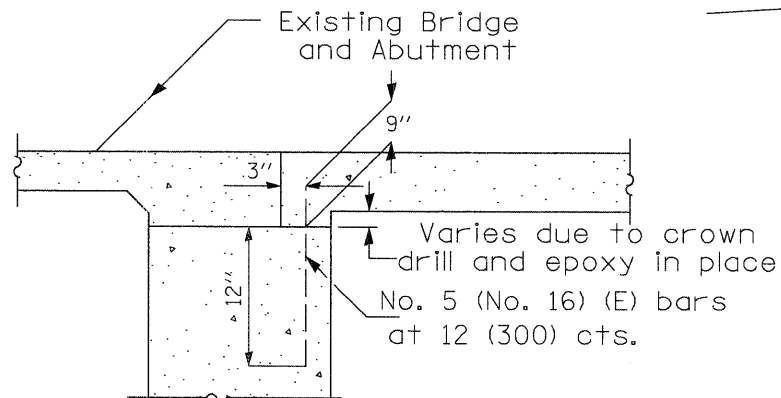


**Parapet Reinforcement Detail**

Notes: All edges shall have 3/4" chamfer.

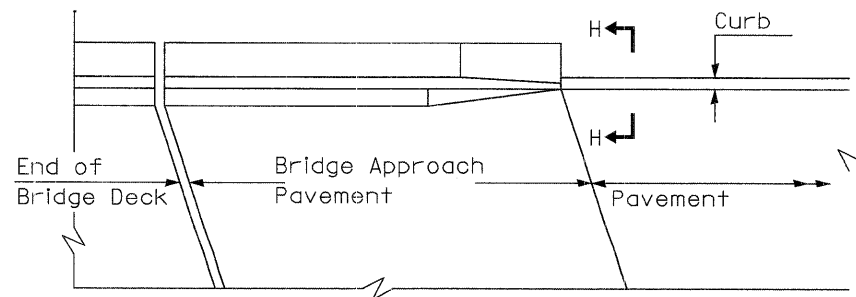


**PARAPET TO CURB TRANSITION  
 PILE BENT ABUTMENT  
 (Fox River Bridge)**

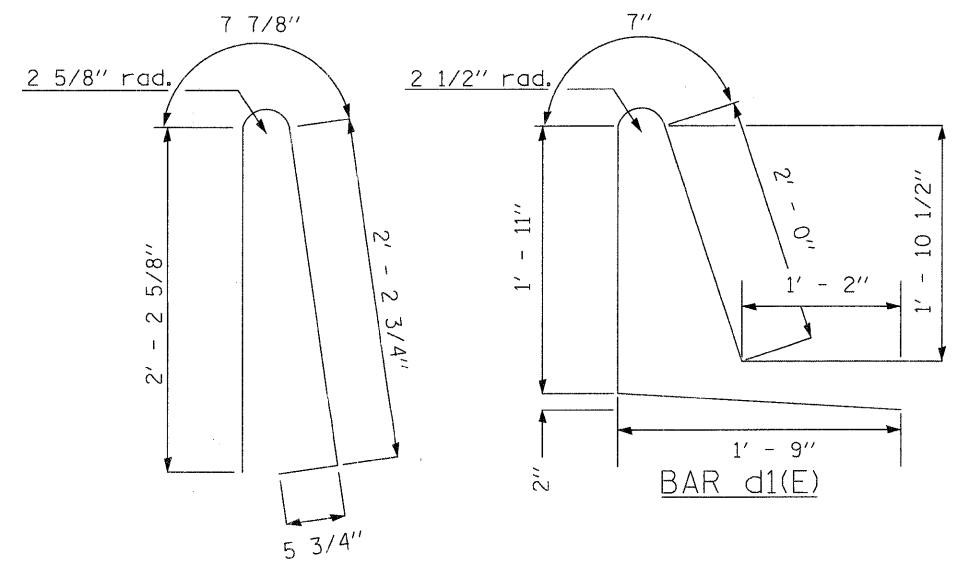


**SECTION E-E**

(Integral Abutments)  
 (NORTH ARM OF BREWSTER CREEK BRIDGES)



**PARAPET TO CURB TRANSITION  
 VAULTED ABUTMENT  
 (WESTBOUND BRIDGE - NORTH ARM  
 OF BREWSTER CREEK)**



**BAR d(E)**

**BAR d1(E)**

FILE NAME =  
 approach pav det.dgn

USER NAME = GYSherman

DESIGNED - DL  
 DRAWN - DL

REVISED -  
 REVISED -  
 REVISED -  
 REVISED -

PLOT SCALE = 1.0000 ' / IN.  
 PLOT DATE = 1/15/2009

CHECKED - GS  
 DATE - 01/16/09

REVISED -  
 REVISED -

**STATE OF ILLINOIS  
 DEPARTMENT OF TRANSPORTATION**

**BRIDGE APPROACH PAVEMENT DETAILS**

SCALE: N.T.S. SHEET NO. 2 OF 4 SHEETS STA. TO STA.

F.A.P. RTE. 361	SECTION 06-00214-20-BR	COUNTY KANE	TOTAL SHEETS 320	SHEET NO. 215
CONTRACT NO.				
FED. ROAD DIST. NO. ILLINOIS FED. AID PROJECT				