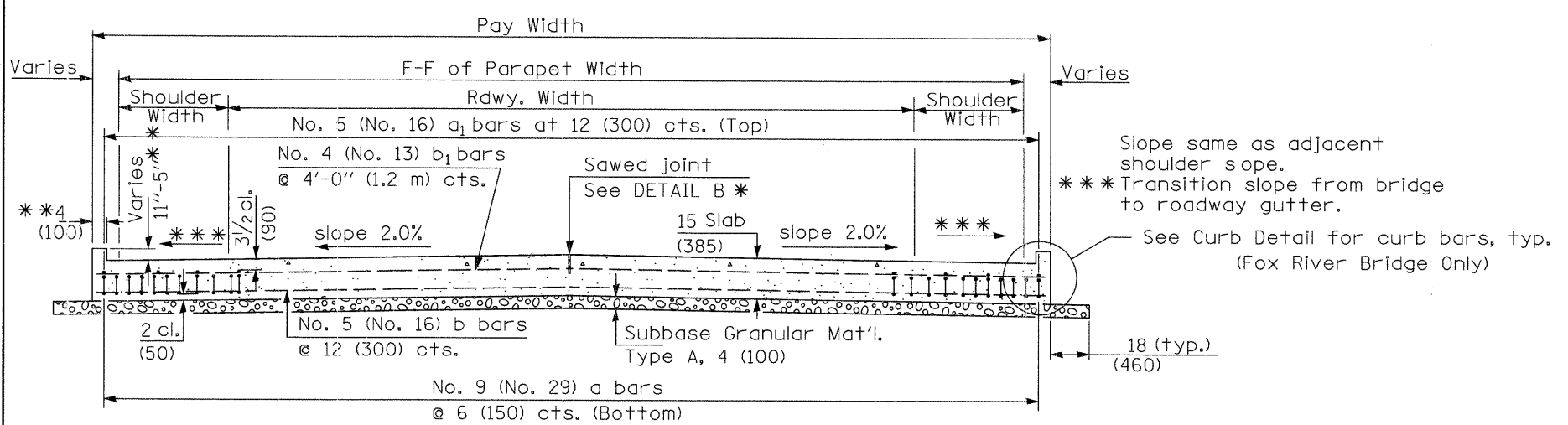
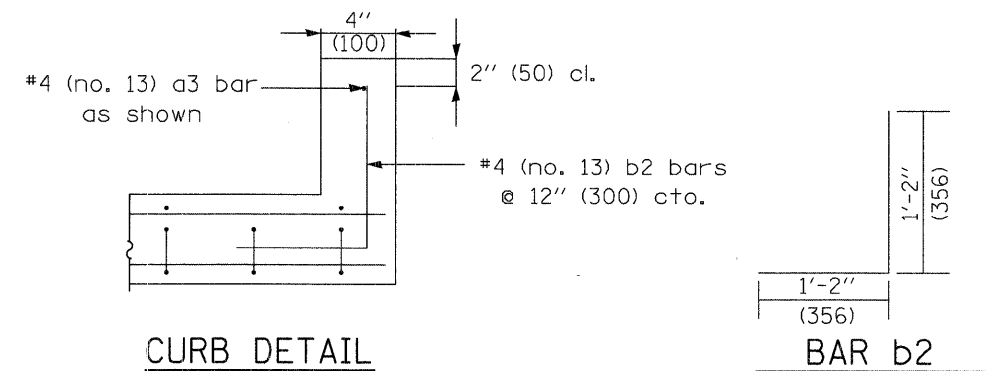


SECTION C-C
 ① Stagger No. 9 (No. 29) a bars as shown on plan - full width

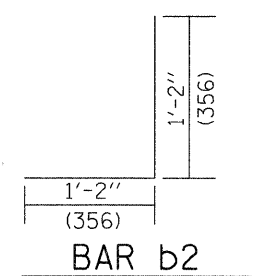


SECTION D-D
 (See Plan for Dimensions not shown)
 (Fox River Bridge and Eastbound Brewster Creek Bridge)

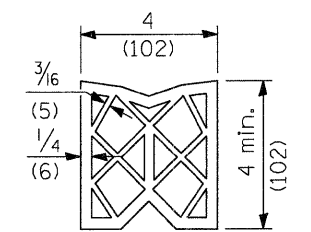
** Curb height varies from 11" to 5" for Fox River Bridge approach pavement. See Highway Standard 631032. Curb width is 4" for Fox River Bridge approach pavement, 3" for other approach pavements. See curb detail and bar b2 for Fox River Bridge approach pavement



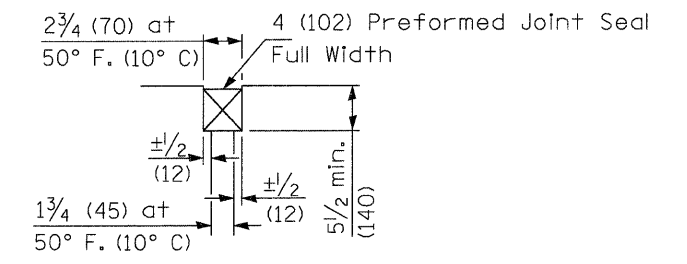
CURB DETAIL
 (Only Curb bars detailed for clarity)



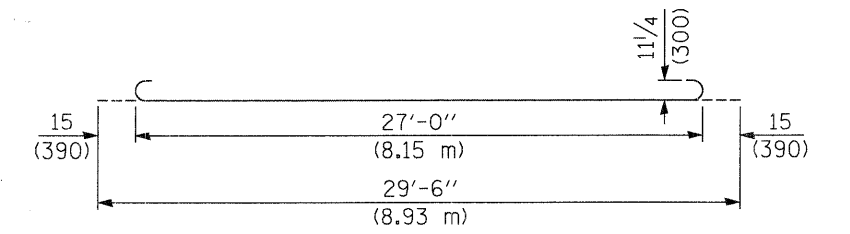
BAR b2



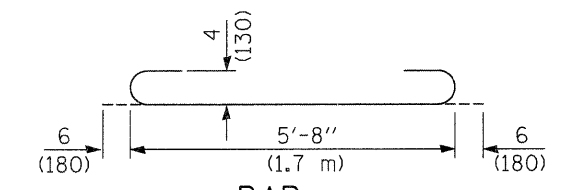
PREFORMED JOINT SEAL



DETAIL A



BAR a



BAR a2

DESIGN STRESSES
 fy = 60,000 p.s.i. (400 MPa)
 f'c = 3,500 p.s.i. (24 MPa)
 n = 8.5

FILE NAME = approach pav det.dgn	USER NAME = GYSherman	DESIGNED - DL	REVISED -	STATE OF ILLINOIS DEPARTMENT OF TRANSPORTATION	BRIDGE APPROACH PAVEMENT DETAILS		F.A.P. RTE. 361	SECTION 06-00214-20-BR	COUNTY KANE	TOTAL SHEETS 320	SHEET NO. 217	
PLOT SCALE = 1/8" = 1' IN.	CHECKED - SE	REVISIED -	REVISIED -		SCALE: N.T.S.	SHEET NO. 4 OF 4 SHEETS	STA.	TO STA.	CONTRACT NO.			
PLOT DATE = 1/15/2009	DATE - 01/16/09	REVISIED -	REVISIED -		FED. ROAD DIST. NO. ILLINOIS FED. AID PROJECT							