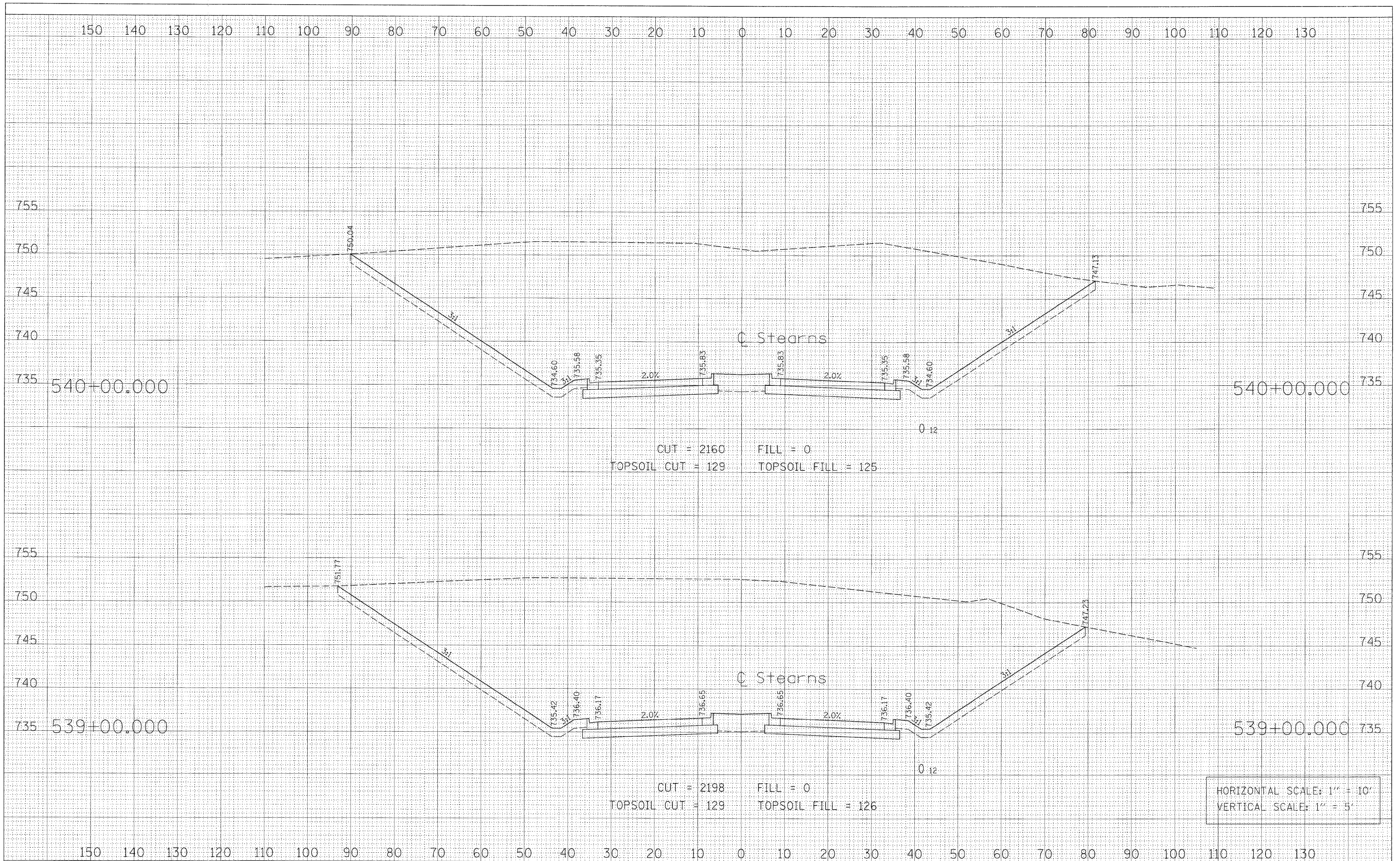


FINAL SURVEY	SURVIVED	BY	DATE
NOTE BOOK NO.	PLOTTED		
	TEMPLATE		
	AREAS CHECKED		

ORIGINAL SURVEY	SURVIVED	BY	DATE
NOTE BOOK NO.	PLOTTED		
	TEMPLATE		
	AREAS CHECKED		



HORIZONTAL SCALE: 1" = 10'
 VERTICAL SCALE: 1" = 5'

FILE NAME = PR_XS_537-543.sht	USER NAME = GTINE	DESIGNED - GS	REVISED -	STATE OF ILLINOIS DEPARTMENT OF TRANSPORTATION	STEARNS ROAD CROSS SECTIONS			F.A.P. RTE. 361	SECTION 06-00214-20-BR	COUNTY Kane	TOTAL SHEETS 320	SHEET NO. 263
		DRAWN - GS	REVISED -		SCALE:	SHEET NO.	OF	SHEETS	STA. 539+00.000 TO STA. 540+00.000	FED. ROAD DIST. NO.	ILLINOIS FED. AID PROJECT	CONTRACT NO.
		CHECKED - SE	REVISED -									
		DATE - 01/16/09	REVISED -									