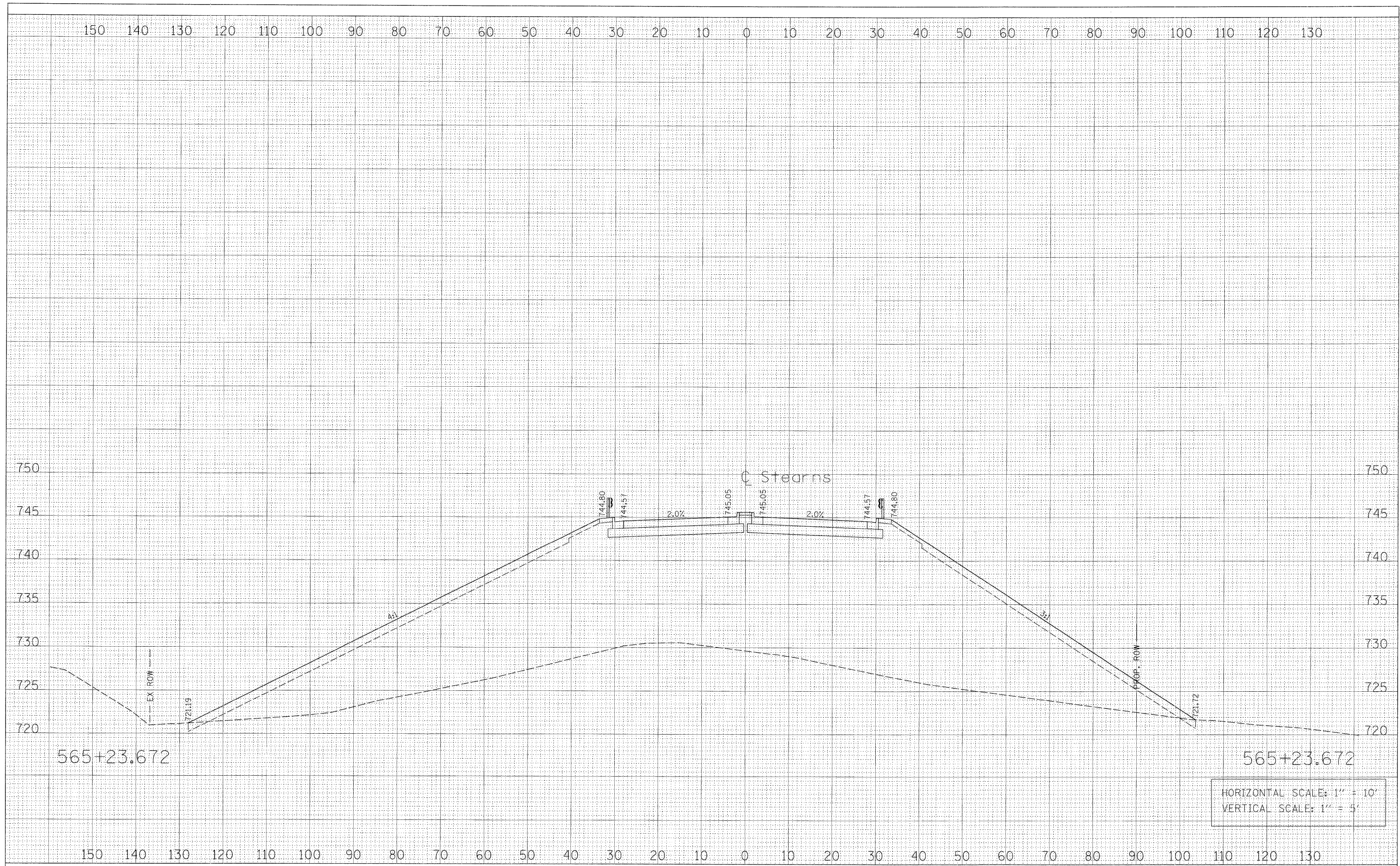


FINAL SURVEY	SURVEYED	DATE
NOTE BOOK	PLOTTED	
NO.	TEMPLATE	
	AREAS CHECKED	

ORIGINAL SURVEY	SURVEYED	DATE
NOTE BOOK	PLOTTED	
NO.	TEMPLATE	
	AREAS CHECKED	



HORIZONTAL SCALE: 1" = 10'  
 VERTICAL SCALE: 1" = 5'

FILE NAME = PR_XS_551-566.sht	USER NAME = GTINE	DESIGNED - GS	REVISSED -	<b>STATE OF ILLINOIS DEPARTMENT OF TRANSPORTATION</b>	<b>STEARNS ROAD CROSS SECTIONS</b>			F.A.P. RTE. 361	SECTION 06-00214-20-BR	COUNTY Kane	TOTAL SHEETS 320	SHEET NO. 279
	PLOT SCALE = 10'	DRAWN - GS	REVISSED -		SCALE:	SHEET NO.	OF	SHEETS	STA. 565+23.672 TO STA. 565+23.672	CONTRACT NO.		
	PLOT DATE = 1/16/2009	CHECKED - SE	REVISSED -		FED. ROAD DIST. NO. ILLINOIS FED. AID PROJECT							
		DATE - 01/16/09	REVISSED -		Sta. 565+23.672 to Sta. 565+23.672							