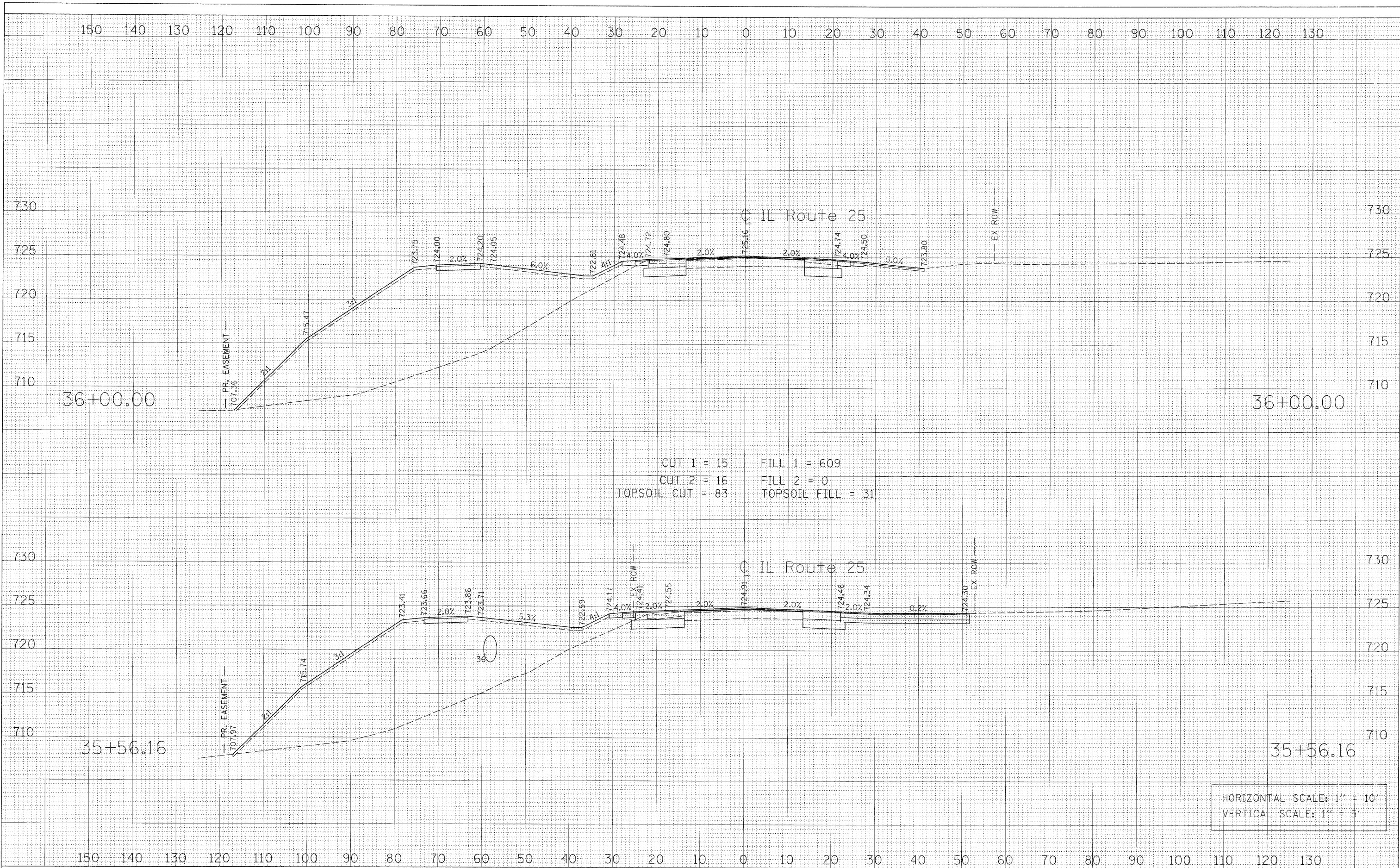


FINAL SURVEY	SURVEYED	BY	DATE
NOTE BOOK	PLOTTED		
NO.	TEMPLATE		
	AREAS		
	CHECKED		

ORIGINAL SURVEY	SURVEYED	BY	DATE
NOTE BOOK	PLOTTED		
NO.	TEMPLATE		
	AREAS		
	CHECKED		



HORIZONTAL SCALE: 1" = 10'
 VERTICAL SCALE: 1" = 5'

FILE NAME = PR.XS_IL25.SHT	USER NAME = GTINE	DESIGNED - GS	REVISED -	STATE OF ILLINOIS DEPARTMENT OF TRANSPORTATION	IL ROUTE 25 CROSS SECTIONS			F.A.P. RTE. 361	SECTION 06-00214-20-BR	COUNTY Kane	TOTAL SHEETS 320	SHEET NO. 313
	PLOT SCALE = 10"	DRAWN - GS	REVISED -		SCALE:	SHEET NO.	OF	SHEETS	STA. 35+56.159 TO STA. 36+00.00	CONTRACT NO.		
	PLOT DATE = 1/14/2009	CHECKED - SE	REVISED -		FED. ROAD DIST. NO. ILLINOIS FED. AID PROJECT							
		DATE - 01/16/09	REVISED -		Sta. 35+56.159 to Sta. 36+00.00							