

| | | | | |
|---------------------|----------------|------------------|--------------|-----------|
| F. A. U. RITE | SECTION | COUNTY | TOTAL SHEETS | SHEET NO. |
| 348 | 07-00055-00-LS | COOK | 41 | 11 |
| STA. | | TO STA. | | |
| FED. ROAD DIST. NO. | ALLIINGS | FED. AID PROJECT | | |

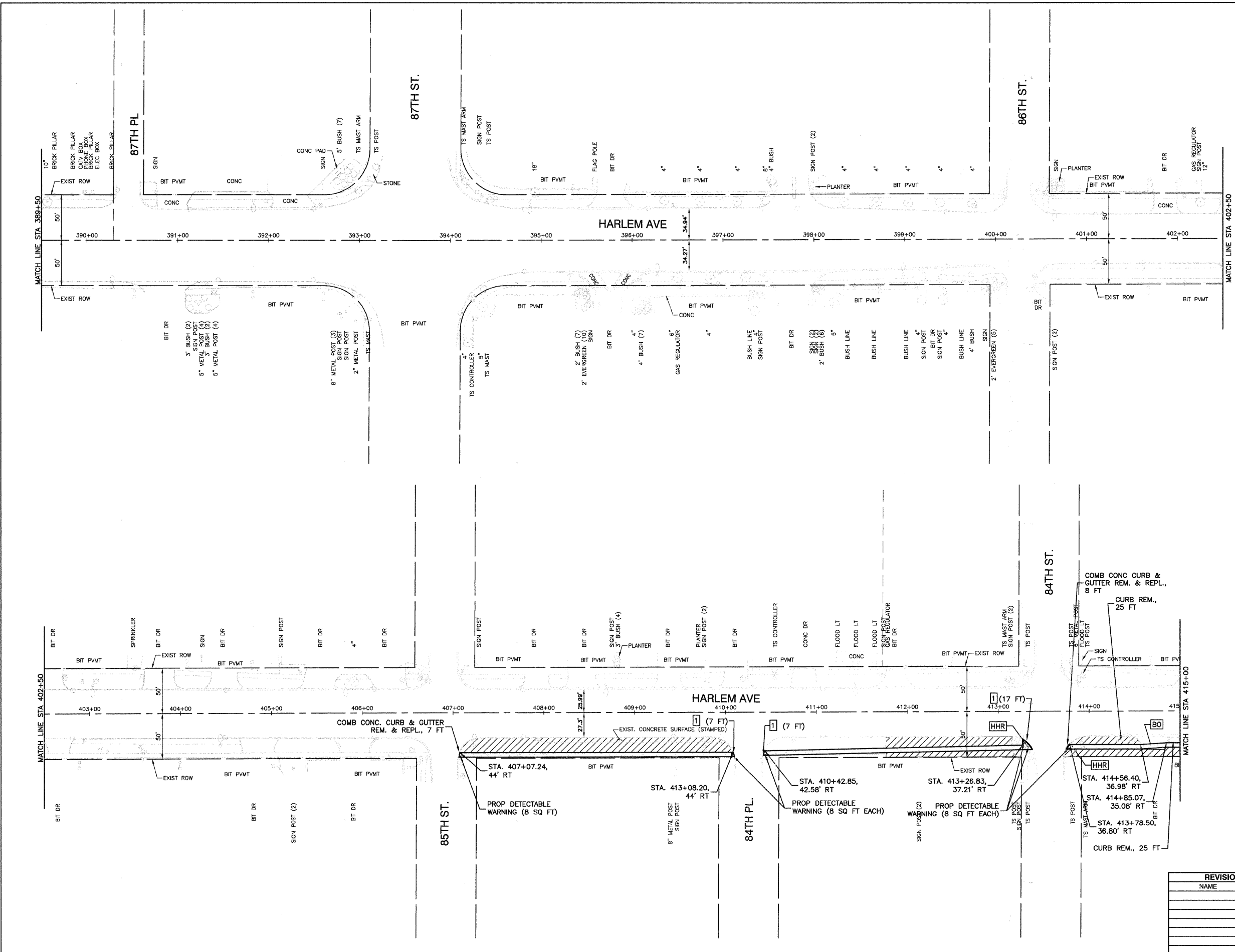
CONTRACT #63106



LEGEND

- PROPOSED PCC SIDEWALK, 5" SUB-BASE GRANULAR MATERIAL TYPE B, 4"
- PAVEMENT REMOVAL
- CATCH BASIN TO BE ADJUSTED
- MANHOLE TO BE ADJUSTED
- WATER VALVE TO BE ADJUSTED
- BUFFALO BOX TO BE ADJUSTED
- HANDHOLE TO BE ADJUSTED
- HANDHOLE TO BE RECONSTRUCTED
- EXISTING DRIVEWAY REMOVED BY OTHERS PRIOR TO CONTRACT
- TREE REMOVAL

(LENGTH) COMBINATION CURB AND GUTTER REMOVAL (SPECIAL) AND REPLACE WITH CONCRETE CURB, TYPE B AND PAVEMENT RESTORATION



| REVISIONS | |
|-----------|------|
| NAME | DATE |
| | |
| | |
| | |
| | |
| | |
| | |
| | |
| | |
| | |
| | |

ILLINOIS DEPARTMENT OF TRANSPORTATION

**FAP 348 (HARLEM AVENUE)
PLAN SHEET
STA. 389+50 TO STA. 415+00**

SCALE: VERT. NA
HORIZ. 1" = 50'
DATE: 12-19-08

DRAWN BY: LTL
CHECKED BY: RJW/PKB

ROBINSON ENGINEERING, LTD.
17000 SOUTH PARK AVENUE, SOUTH HOLLAND, ILLINOIS 60473
(708) 381-6700 FAX (708) 381-3628 07441-PLAN-01 P06
ILLINOIS DESIGN FIRM REGISTRATION NO. 154001108