

### CABLE PLAN

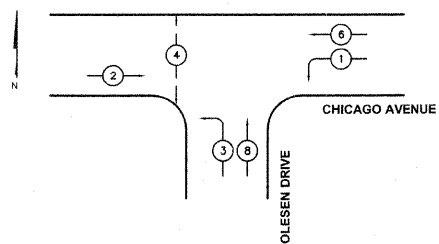


**NOTES:**

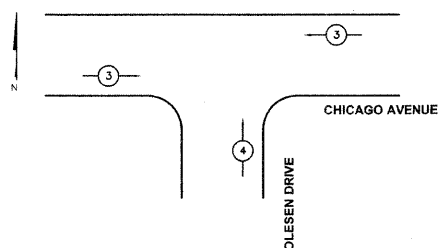
- EXISTING CONTROLLER AND CABINET IS TO REMAIN THE PROPERTY OF THE DUPAGE COUNTY DIVISION OF TRANSPORTATION (DOT) AND IS TO BE DELIVERED TO THE FACILITY OF THE DOT SIGNAL MAINTENANCE CONTRACTOR. ALL OTHER EQUIPMENT SHALL BE SALVAGED BY THE CONTRACTOR. ANY PROFITS FROM SALVAGED EQUIPMENT SHALL BE INCLUDED IN THE CONTRACT BID ITEMS.
- EXISTING ELECTRICAL SERVICE TO BE REPLACED WITH NEW SERVICE.
- NEW NO. 6 1C GROUNDING CABLE IS TO BE INSTALLED BETWEEN SERVICE AND CONTROLLER.
- EXISTING EVP DETECTOR AND CONFIRMATION BEACON TO BE REMOVED AND REPLACED WITH NEW EVP EQUIPMENT. THE EXISTING CABLES SHALL REMAIN IN PLACE AND BE REUSED FOR THE NEW EQUIPMENT.
- EXISTING PEDESTRIAN PUSH BUTTONS TO BE REMOVED AND REPLACED WITH NEW EVP EQUIPMENT. THE EXISTING CABLES SHALL REMAIN IN PLACE AND BE REUSED FOR THE NEW EQUIPMENT.

**LEGEND**

- DUAL ENTRY PHASE
- PEDESTRIAN PHASE

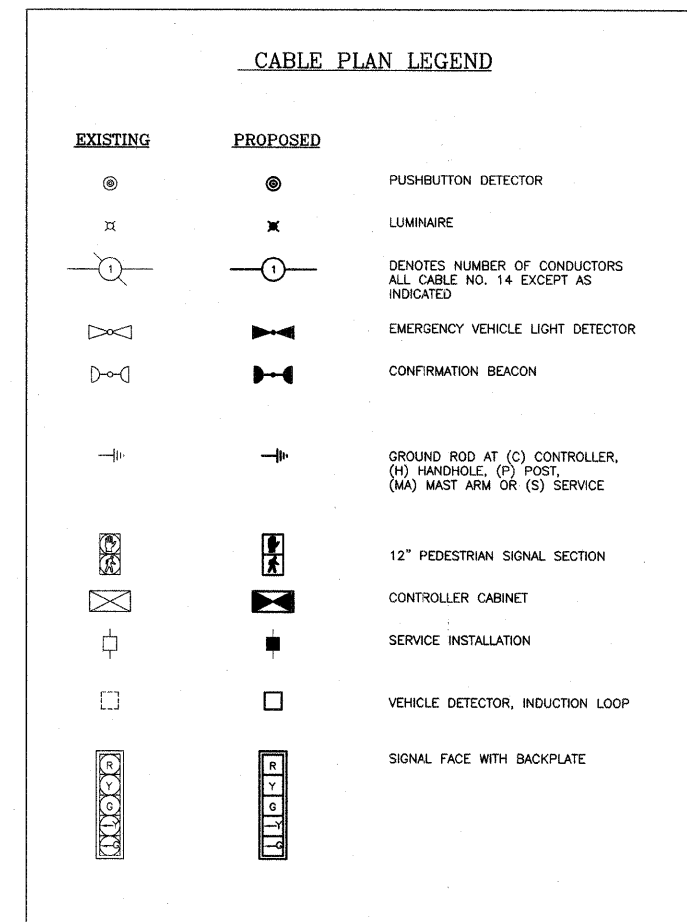
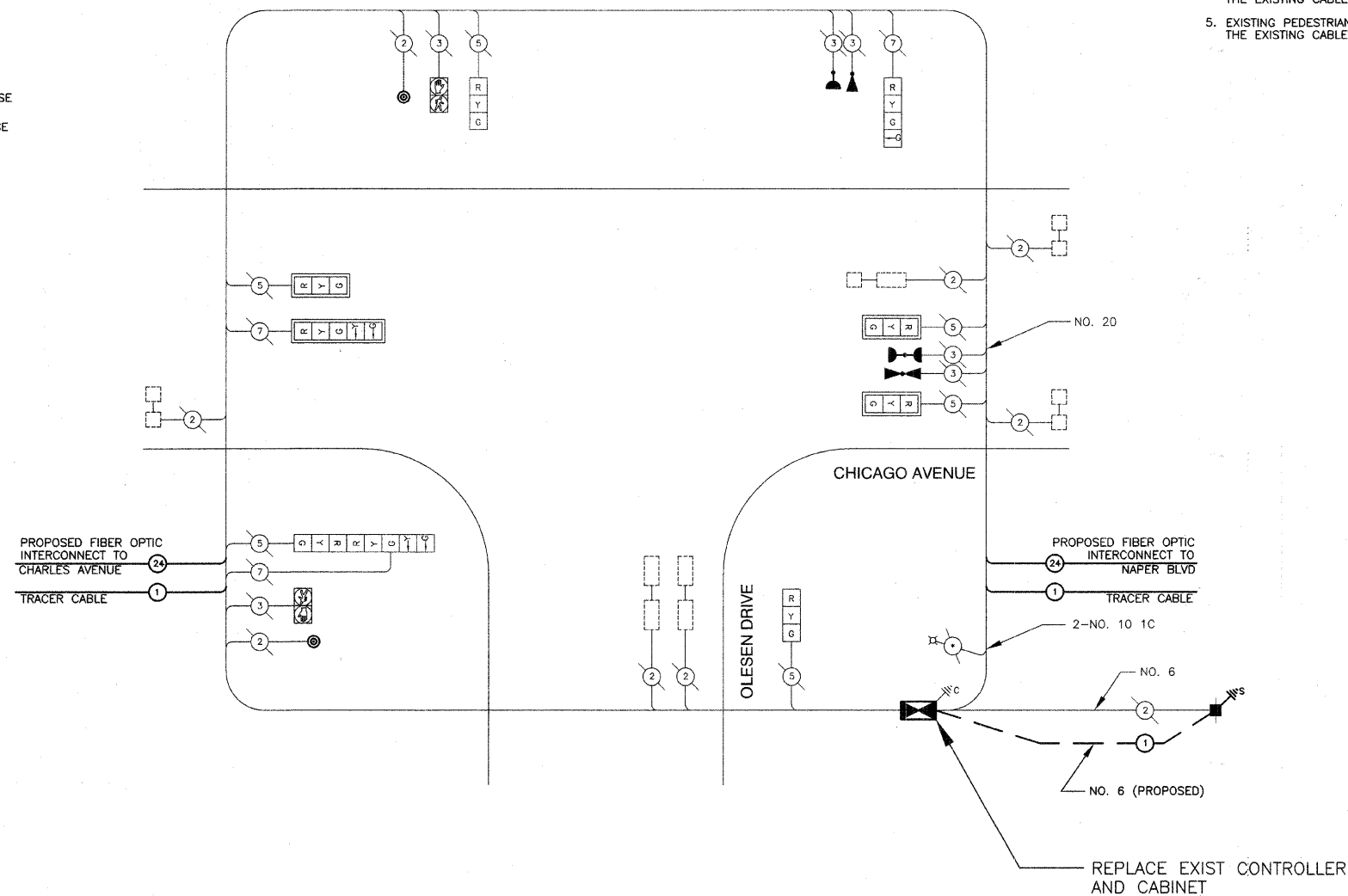


PHASE DESIGNATION DIAGRAM



PROPOSED EMERGENCY VEHICLE PREEMPTORS		
EMERGENCY VEHICLE PREEMPTOR	3	4
MOVEMENT	—	

EMERGENCY VEHICLE PREEMPTION SEQUENCE



### SCHEDULE OF QUANTITIES

PAY CODE NUMBER	PAY ITEM	UNIT	TOTAL QUANTITIES
85000200	MAINTENANCE OF EXISTING TRAFFIC SIGNAL INSTALLATION	EACH	1
85700200	FULL-ACTUATED CONTROLLER AND TYPE IV CABINET	EACH	1
86400100	TRANSCEIVER-FIBER OPTIC	EACH	1
X8730027	ELECTRIC CABLE IN CONDUIT, GROUNDING, NO. 6 1C	FOOT	100
87900200	DRILL EXISTING HANDHOLE	EACH	2
88500100	INDUCTIVE LOOP DETECTOR	EACH	6
88700200	LIGHT DETECTOR	EACH	2
88700300	LIGHT DETECTOR AMPLIFIER	EACH	1
88800100	PEDESTRIAN PUSH-BUTTON	EACH	2
89502375	REMOVE EXISTING TRAFFIC SIGNAL EQUIPMENT	EACH	1
X8510300	PAINT TRAFFIC SIGNAL POST	EACH	3
X8050015	SERVICE INSTALLATION - POLE MOUNTED	EACH	1
X0324007	OPTIMIZE TRAFFIC SIGNAL SYSTEM	EACH	1

REVISIONS	
NAME	DATE

DUPAGE COUNTY DIVISION OF TRANSPORTATION  
 CHICAGO AVENUE & OLESEN DRIVE  
 EXISTING CABLE DIAGRAM AND  
 SCHEDULE OF QUANTITIES

SCALE: NONE  
 DATE: 10/24/08

DRAWN BY: TH  
 DESIGNED BY: TH  
 CHECKED BY: DAZ