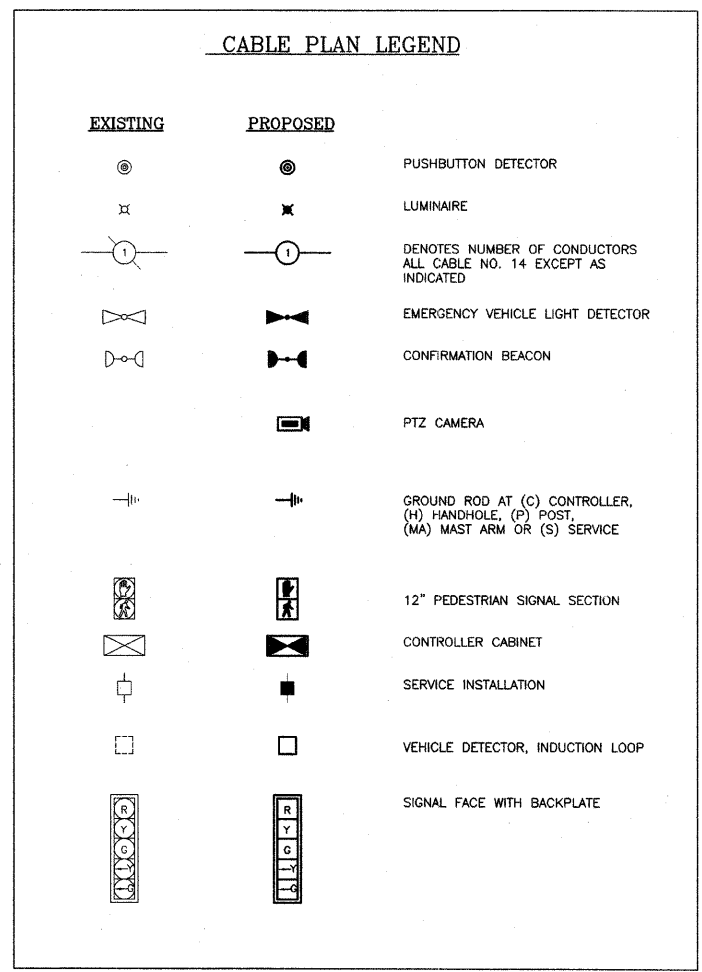
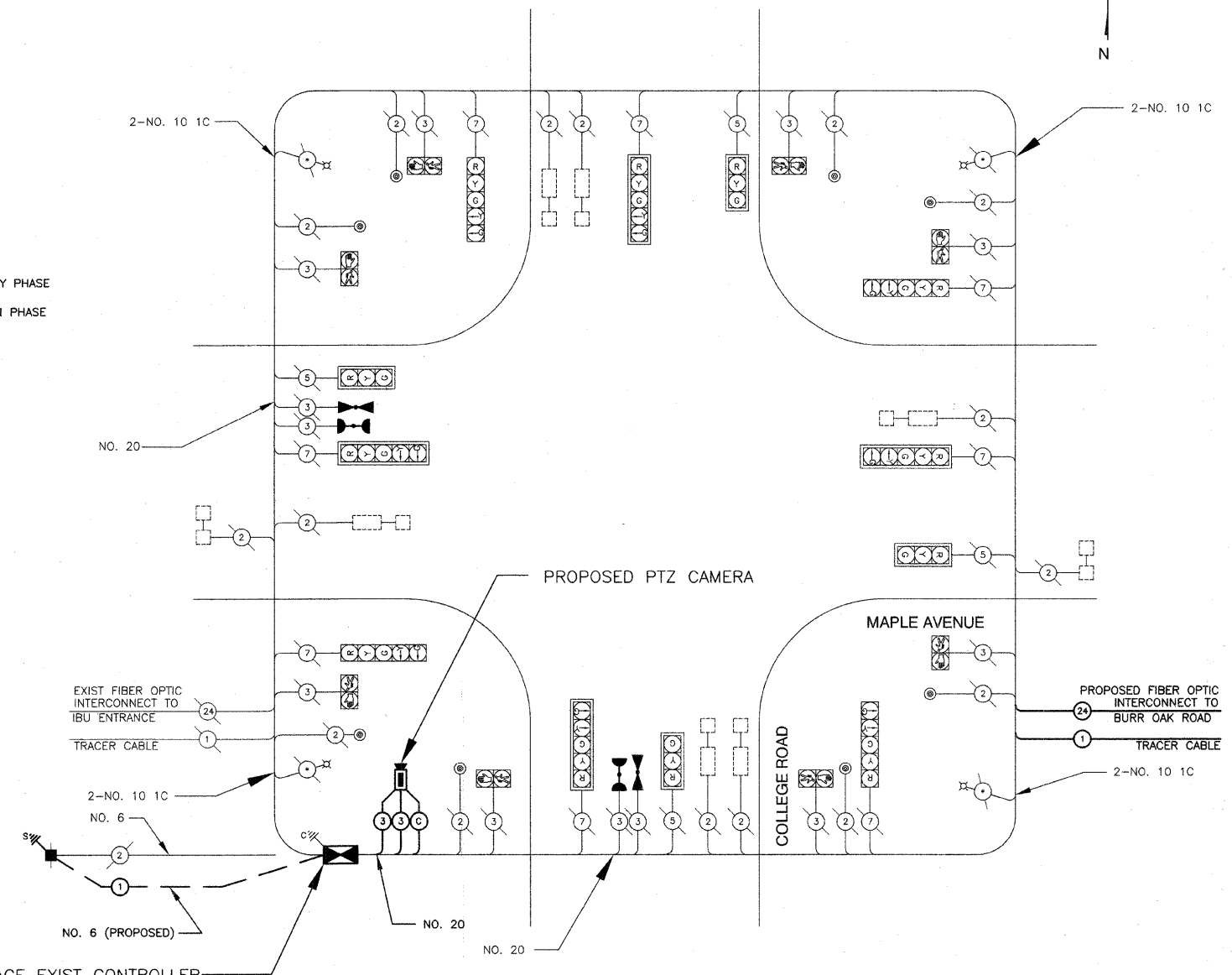
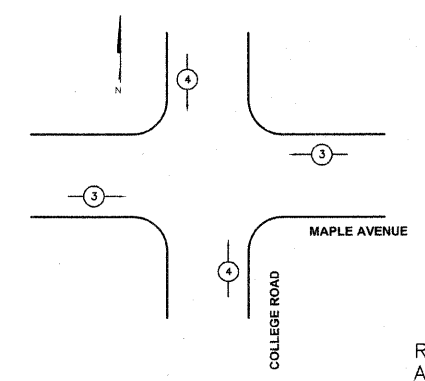
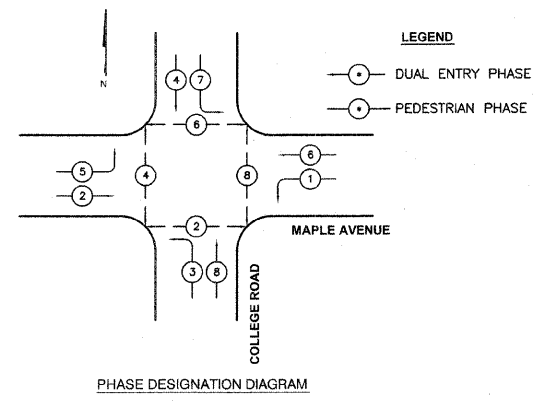


CABLE PLAN

- NOTES:
- EXISTING CONTROLLER AND CABINET IS TO REMAIN THE PROPERTY OF THE DUPAGE COUNTY DIVISION OF TRANSPORTATION (DOT) AND IS TO BE DELIVERED TO THE FACILITY OF THE DOT SIGNAL MAINTENANCE CONTRACTOR. ALL OTHER EQUIPMENT SHALL BE SALVAGED BY THE CONTRACTOR. ANY PROFITS FROM SALVAGED EQUIPMENT SHALL BE INCLUDED IN THE CONTRACT BID ITEMS.
 - THE PAN-TILT-ZOOM (PTZ) CAMERA FOR THE REMOTE CONTROLLED VIDEO SYSTEM SHALL BE MOUNTED ON THE POLE OF THE SOUTHBOUND COMBINATION MAST ARM AND POLE AT THE SOUTHWEST QUADRANT UNLESS OTHERWISE DIRECTED BY THE ENGINEER.
 - THE WORK FOR THE PTZ CAMERA INSTALLATION SHALL BE PAID FOR UNDER THE PAY ITEM "REMOTE CONTROLLED VIDEO SYSTEM".
 - EXISTING ELECTRICAL SERVICE TO BE REPLACED WITH NEW SERVICE.
 - NEW NO. 6 1C GROUNDING CABLE IS TO BE INSTALLED BETWEEN SERVICE AND CONTROLLER.
 - EXISTING EVP DETECTOR AND CONFIRMATION BEACON TO BE REMOVED AND REPLACED WITH NEW EVP EQUIPMENT. THE EXISTING CABLES SHALL REMAIN IN PLACE AND BE REUSED FOR THE NEW EQUIPMENT.

63107



SCHEDULE OF QUANTITIES

PAY CODE NUMBER	PAY ITEM	UNIT	TOTAL QUANTITIES
85000200	MAINTENANCE OF EXISTING TRAFFIC SIGNAL INSTALLATION	EACH	1
85700300	FULL-ACTUATED CONTROLLER AND TYPE V CABINET	EACH	1
86000100	MASTER CONTROLLER	EACH	1
87301225	ELECTRIC CABLE IN CONDUIT, SIGNAL, NO. 14 3C	FOOT	200
XX003661	ELECTRIC CABLE IN CONDUIT, COAXIAL	FOOT	200
X8730027	ELECTRIC CABLE IN CONDUIT, GROUNDING, NO. 6 1C	FOOT	100
X8730250	ELECTRIC CABLE IN CONDUIT, NO. 20 3/C, TWISTED, SHIELDED	FOOT	200
87900200	DRILL EXISTING HANDHOLE	EACH	2
88500100	INDUCTIVE LOOP DETECTOR	EACH	8
88700200	LIGHT DETECTOR	EACH	2
88700300	LIGHT DETECTOR AMPLIFIER	EACH	1
89502375	REMOVE EXISTING TRAFFIC SIGNAL EQUIPMENT	EACH	1
X8050015	SERVICE INSTALLATION - POLE MOUNTED	EACH	1
XX005940	REMOTE CONTROLLED VIDEO SYSTEM	EACH	1
X0324007	OPTIMIZE TRAFFIC SIGNAL SYSTEM	EACH	1

REVISIONS	
NAME	DATE

DUPAGE COUNTY DIVISION OF TRANSPORTATION
 MAPLE AVENUE & COLLEGE ROAD /
 YACKLEY AVENUE
 EXISTING CABLE DIAGRAM AND
 SCHEDULE OF QUANTITIES

SCALE: NONE
 DATE: 10/24/08

DRAWN BY: TH
 DESIGNED BY: TH
 CHECKED BY: DAZ