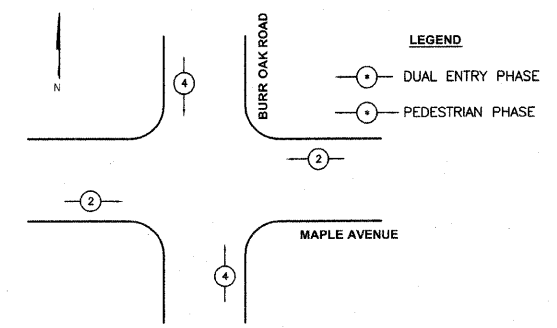


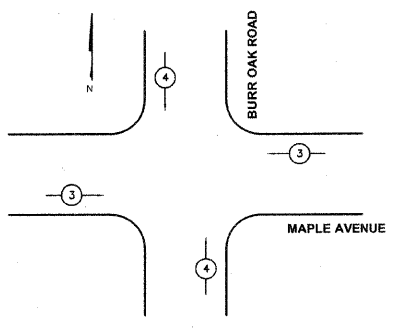
63107

**NOTES:**

1. REMOVAL OF EXISTING SIGNAL EQUIPMENT IS TO BE PAID UNDER THE PAY ITEM "REMOVE EXISTING TRAFFIC SIGNAL EQUIPMENT".
2. ALL EXISTING SIGNAL HEADS ARE TO BE REPLACED WITH POLYCARBONATE LED HEADS WITH 12" DISPLAYS. THE EXISTING CABLE SHALL BE SPLICED ONTO THE NEW EQUIPMENT.
3. EXISTING ELECTRICAL SERVICE TO BE REPLACED WITH NEW SERVICE.
4. NEW NO. 6 1C GROUNDING CABLE IS TO BE INSTALLED BETWEEN SERVICE AND CONTROLLER.
5. EXISTING EVP DETECTOR AND CONFIRMATION BEACON TO BE REMOVED AND REPLACED WITH NEW EVP EQUIPMENT. THE EXISTING CABLES SHALL REMAIN IN PLACE AND BE REUSED FOR THE NEW EQUIPMENT.

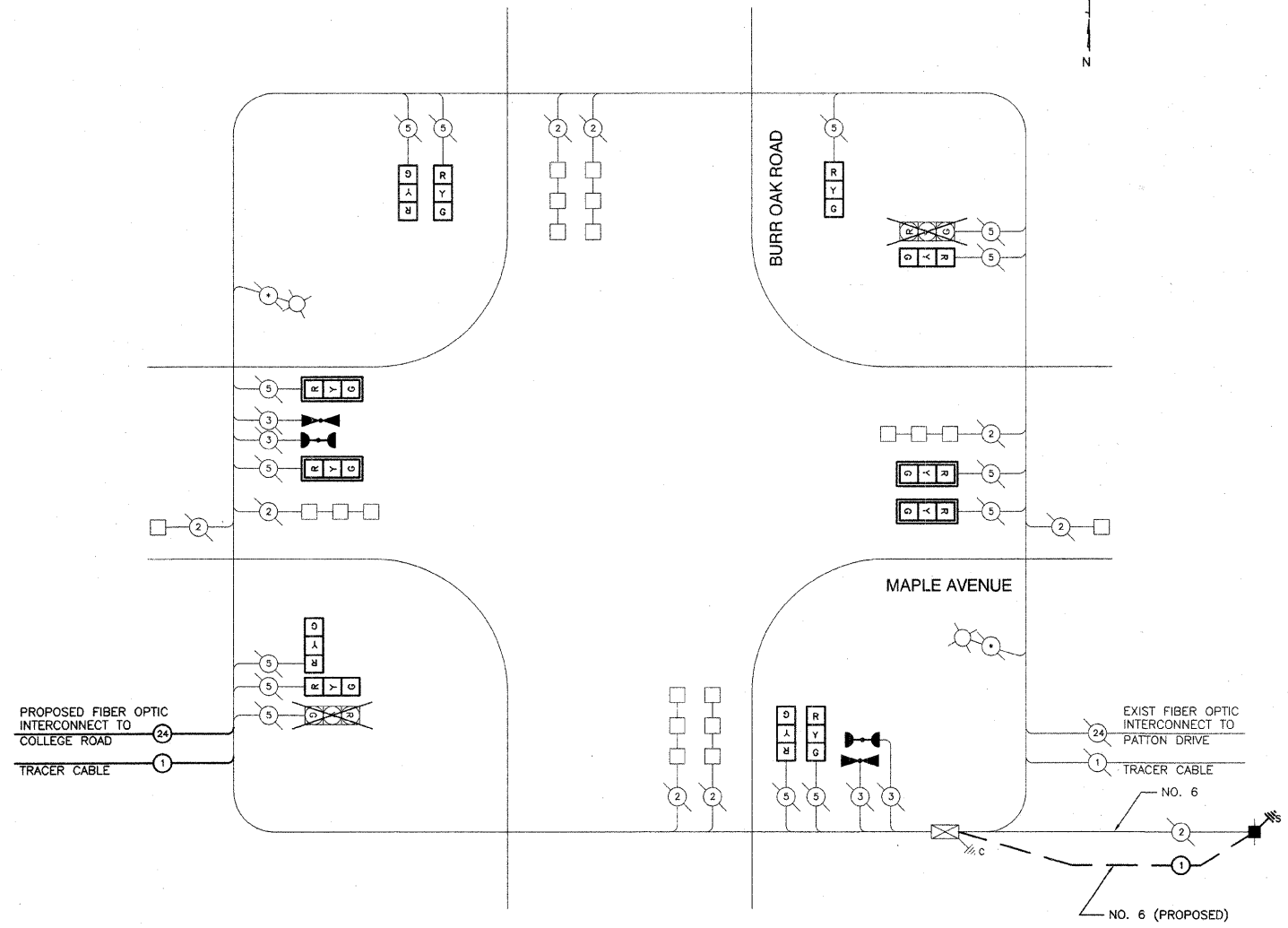


PHASE DESIGNATION DIAGRAM

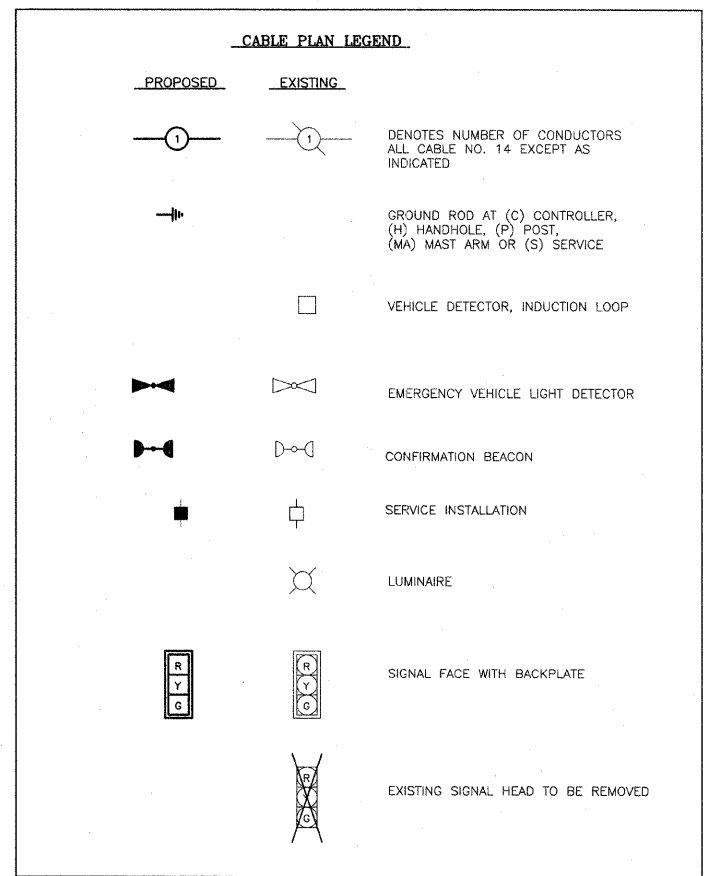


PROPOSED EMERGENCY VEHICLE PREEMPTORS		
EMERGENCY VEHICLE PREEMPTOR	3	4
MOVEMENT	==	

EMERGENCY VEHICLE PREEMPTION SEQUENCE



SCHEDULE OF QUANTITIES



PAY CODE NUMBER	PAY ITEM	UNIT	TOTAL QUANTITIES
85000200	MAINTENANCE OF EXISTING TRAFFIC SIGNAL INSTALLATION	EACH	1
X8730027	ELECTRIC CABLE IN CONDUIT, GROUNDING, NO. 6 1C	FOOT	100
87502500	TRAFFIC SIGNAL POST, GALVANIZED STEEL 16 FT.	EACH	3
87900200	DRILL EXISTING HANDHOLE	EACH	1
88200210	TRAFFIC SIGNAL BACKPLATE, LOUVERED, ALUMINUM	EACH	4
88700200	LIGHT DETECTOR	EACH	2
88700300	LIGHT DETECTOR AMPLIFIER	EACH	1
89502375	REMOVE EXISTING TRAFFIC SIGNAL EQUIPMENT	EACH	1
88030020	SIGNAL HEAD, LED, 1-FACE, 3-SECTION, MAST ARM MOUNTED	EACH	4
88030050	SIGNAL HEAD, LED, 1-FACE, 3-SECTION, BRACKET MOUNTED	EACH	8
X8050015	SERVICE INSTALLATION - POLE MOUNTED	EACH	1
X0324007	OPTIMIZE TRAFFIC SIGNAL SYSTEM	EACH	1

DU PAGE COUNTY D.O.T. TRAFFIC SIGNAL INSTALLATION ELECTRICAL SERVICE REQUIREMENTS					TOTAL WATTAGE
TYPE	NO. LAMPS	WATTAGE		OPERATION (%)	
		INCAND.	LED		
RED BALL	12	135	10	0.60	72
YELLOW BALL	12	135	22	0.03	7.9
GREEN BALL	12	135	12	0.37	53.3
RED ARROW	0	135	5	0.85	0
YELLOW ARROW	0	135	10	0.02	0
GREEN ARROW	0	135	5	0.13	0
PED - WALK	0	90	5	0.05	0
PED - DON'T WALK	0	90	6	0.95	0
CONTROLLER	1	100		1.00	100
LUMINAIRE	2	310		0.50	310
TOTAL=					543

FOUNDATION(DEPTH)	FT. (m)	CABLE SLACK	FT. (m)	VERTICAL	FT. (m)
TYPE A - POST	4 (1.2)	HANDHOLE	6.5 (2.0)	ALL FOUNDATIONS	3.5 (1.0)
D - CONTROLLER	4 (1.2)	DOUBLE HANDHOLE	13 (4.0)	MAST ARM (L) POLE	20+L-2=
E - M. ARM POLE		SIGNAL POST	2 (1.0)		(6m+L-0.8m)=
24" (600 mm)	10 (3.0)	CONTROLLER CAB.	1 (0.5)	BRACKET MOUNTED	13 (4.0)
30" (750 mm)	15 (4.6)	FIBER OPTIC	13 (4.0)	PED. BUTTON	4 (1.2)
		ELECTRIC SERVICE	1 (0.5)	ELECTRIC SERVICE	13.5 (4.1)
		GROUND CABLE	1 (0.5)	SERVICE TO GROUND	13.5 (4.1)
				POST MOUNTED	6 (1.8)

REVISIONS	
NAME	DATE

DUPAGE COUNTY DIVISION OF TRANSPORTATION  
**MAPLE AVENUE & BURR OAK ROAD**  
 EXISTING AND PROPOSED  
 CABLE PLAN AND PHASING DIAGRAM  
 SCALE: 1"=20'  
 DATE: 10/24/08  
 DRAWN BY: TH  
 DESIGNED BY: TH  
 CHECKED BY: DAZ