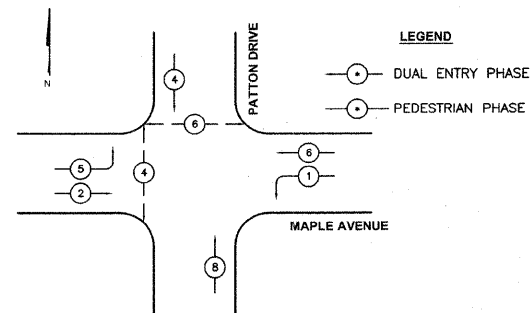
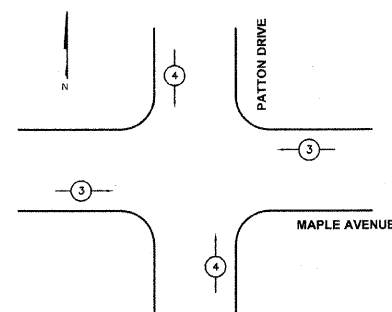


63107

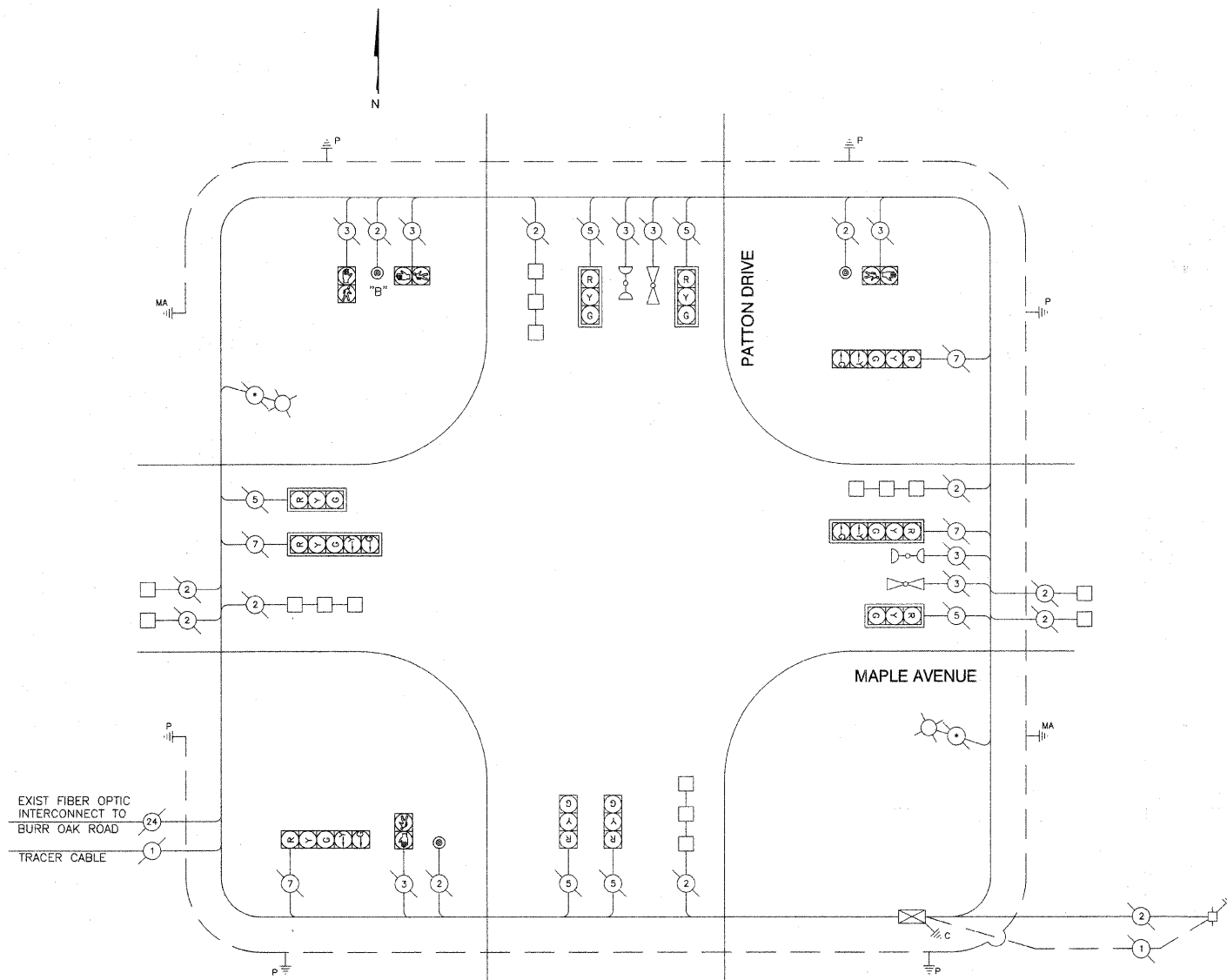


PHASE DESIGNATION DIAGRAM



PROPOSED EMERGENCY VEHICLE PREEMPTORS		
EMERGENCY VEHICLE PREEMPTOR	3	4
MOVEMENT	==	

EMERGENCY VEHICLE PREEMPTION SEQUENCE



NOTE: PUSH BUTTON "B" SHALL MAKE A CALL IN PHASES 4 AND 6

CABLE PLAN LEGEND

- | PROPOSED | EXISTING | |
|----------|----------|--|
| | | DENOTES NUMBER OF CONDUCTORS ALL CABLE NO. 14 EXCEPT AS INDICATED |
| | | GROUND ROD AT (C) CONTROLLER, (H) HANDHOLE, (P) POST, (MA) MAST ARM OR (S) SERVICE |
| | | VEHICLE DETECTOR, INDUCTION LOOP |
| | | EMERGENCY VEHICLE LIGHT DETECTOR |
| | | CONFIRMATION BEACON |
| | | LUMINAIRE |
| | | SIGNAL FACE WITH BACKPLATE |

SCHEDULE OF QUANTITIES

PAY CODE NUMBER	PAY ITEM	UNIT	TOTAL QUANTITIES
85000200	MAINTENANCE OF EXISTING TRAFFIC SIGNAL INSTALLATION	EACH	1
X0324007	OPTIMIZE TRAFFIC SIGNAL SYSTEM	EACH	1

DU PAGE COUNTY D.O.T. TRAFFIC SIGNAL INSTALLATION ELECTRICAL SERVICE REQUIREMENTS					TOTAL WATTAGE
TYPE	NO. LAMPS	WATTAGE		OPERATION (%)	
RED BALL	10	135	10	0.60	60
YELLOW BALL	10	135	22	0.03	6.6
GREEN BALL	10	135	12	0.37	44.4
RED ARROW	0	135	5	0.85	0
YELLOW ARROW	4	135	10	0.02	0.8
GREEN ARROW	4	135	5	0.13	2.6
PED - WALK	4	90	5	0.05	1
PED - DON'T WALK	4	90	6	0.95	22.8
CONTROLLER	1	100		1.00	100
LUMINAIRE	2	310		0.50	310
TOTAL=					548

FOUNDATION/DEPTH	FT. (m)	CABLE SLACK	FT. (m)	VERTICAL	FT. (m)
TYPE A - POST	4 (1.2)	HANDHOLE	6.5 (2.0)	ALL FOUNDATIONS	3.5 (1.0)
D - CONTROLLER	4 (1.2)	DOUBLE HANDHOLE	13 (4.0)	MAST ARM (L) POLE	20+L-2=
E - M. ARM POLE		SIGNAL POST	2 (1.0)		(6m+L-0.8m)=
24" (600 mm)	10 (3.0)	CONTROLLER CAB.	1 (0.5)	BRACKET MOUNTED	13 (4.0)
30" (750 mm)	15 (4.6)	FIBER OPTIC	13 (4.0)	PED. BUTTON	4 (1.2)
		ELECTRIC SERVICE	1 (0.5)	ELECTRIC SERVICE	13.5 (4.1)
		GROUND CABLE	1 (0.5)	SERVICE TO GROUND	13.5 (4.1)
				POST MOUNTED	6 (1.8)

REVISIONS	
NAME	DATE

DUPAGE COUNTY DIVISION OF TRANSPORTATION
 MAPLE AVENUE & PATTON DRIVE
 EXISTING AND PROPOSED
 CABLE PLAN AND PHASING DIAGRAM
 SCALE: 1"=20'
 DATE: 10/24/08
 DRAWN BY: TH
 DESIGNED BY: TH
 CHECKED BY: DAZ