

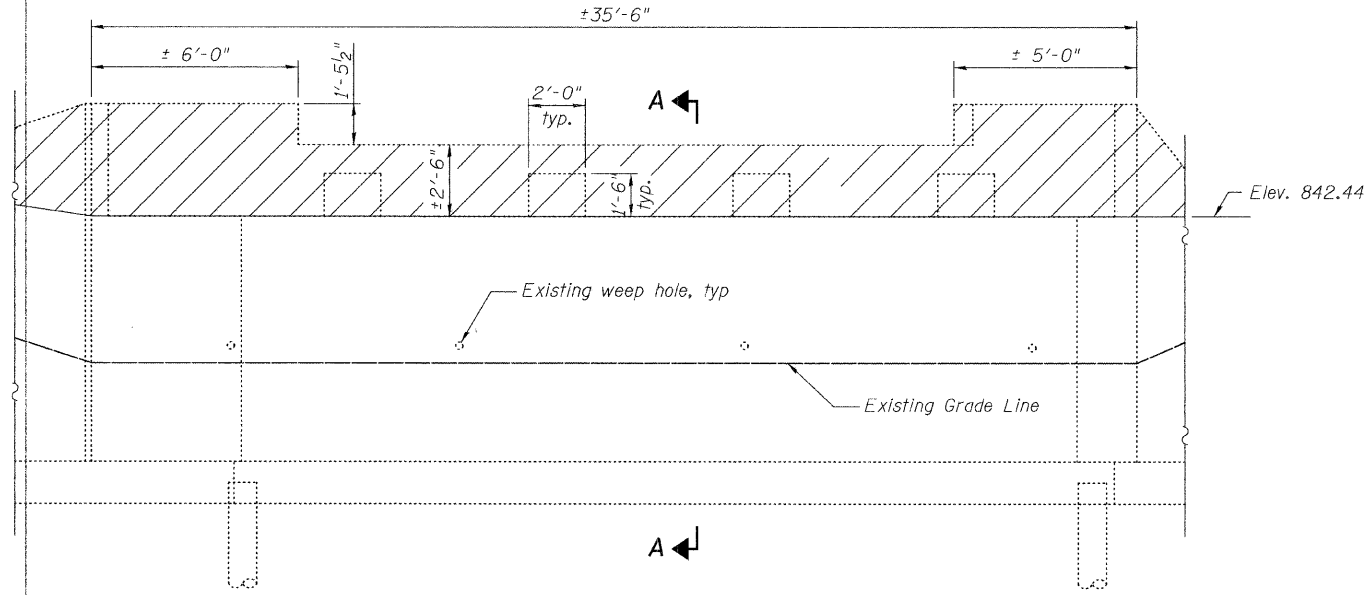
3/2/1000 1/1 IN.

rdanley

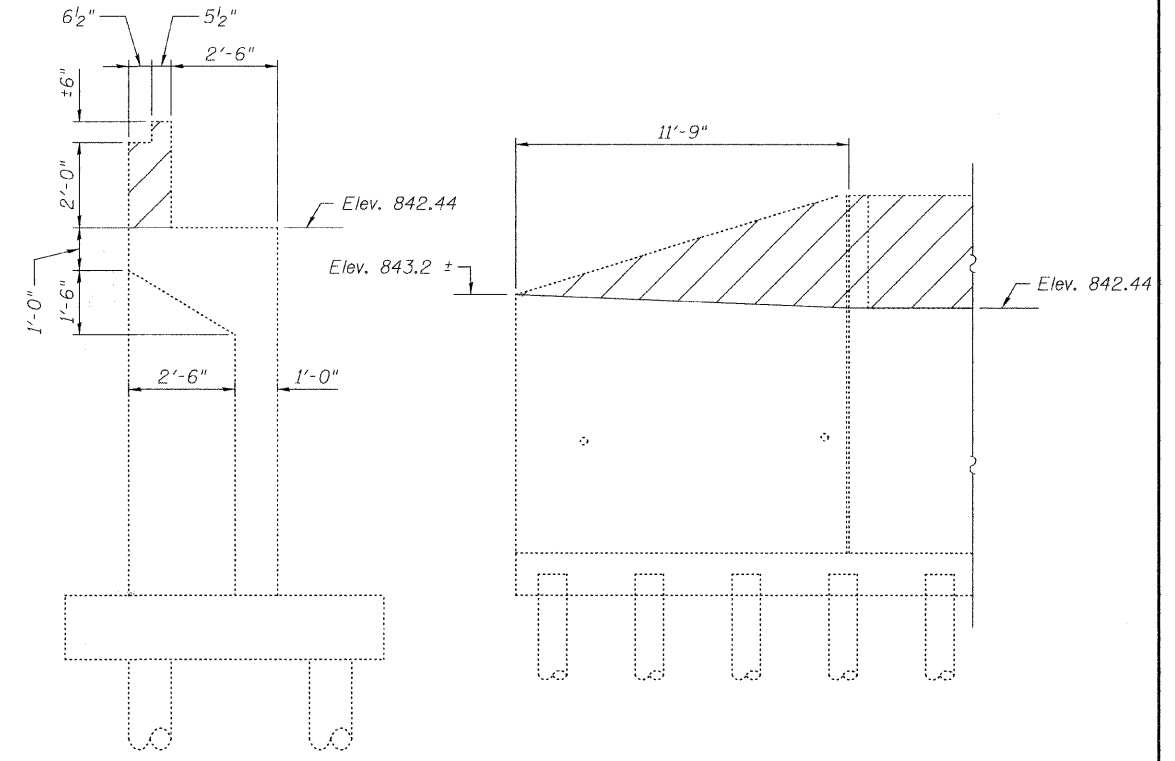
2/6/2009

N:\PROJ\3335\Design\Structural\CAD\3335 16 Abutment Concrete Removal.dgn

McHENRY COUNTY  
DIVISION OF TRANSPORTATION

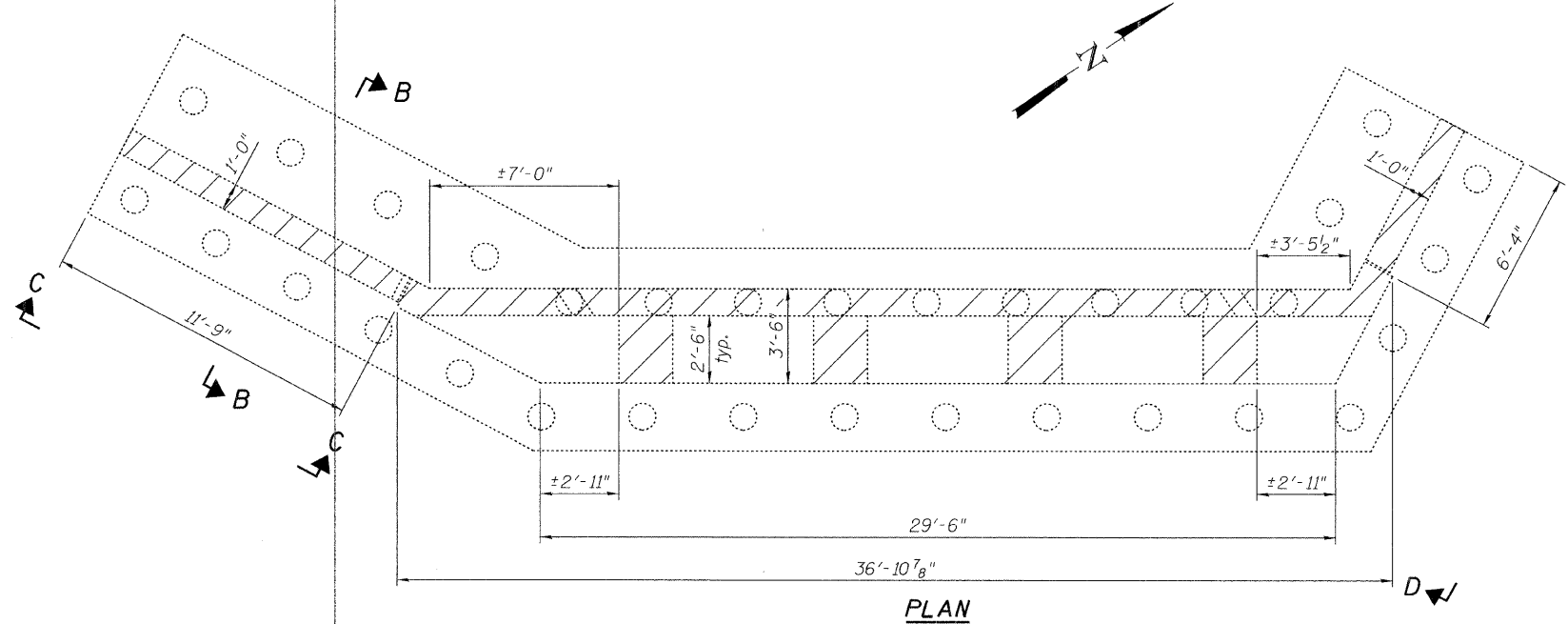


**ELEVATION**

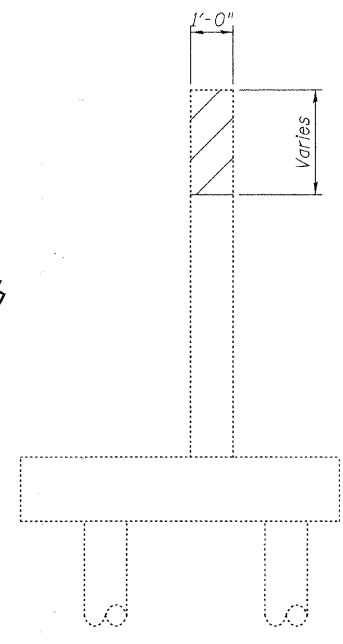


**SECTION A-A**

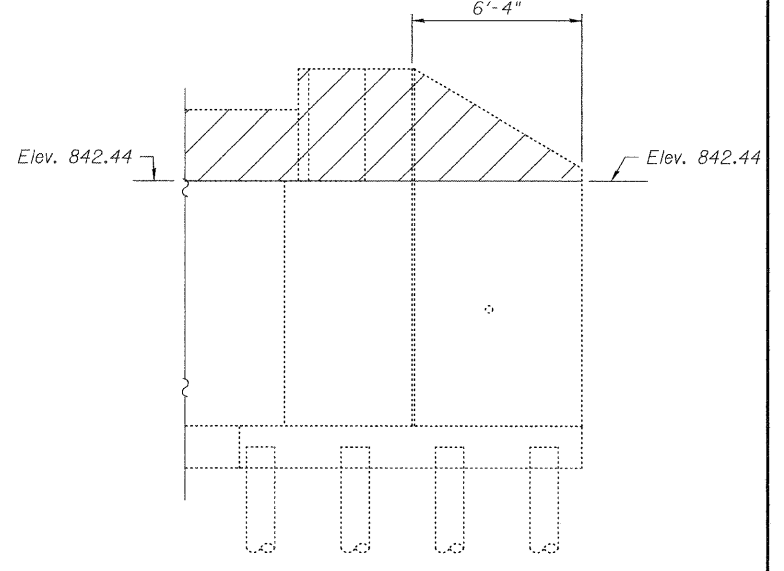
**VIEW C-C**



**PLAN**



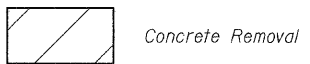
**SECTION B-B**



**VIEW D-D**

West Abutment shown.  
East Abutment similar, opposite hand

**LEGEND**



**BILL OF MATERIAL**

Item	Unit	Total
Concrete Removal	Cu. Yd.	14.0

**NOTE:**  
1. Contractor shall exercise extreme caution while removing concrete in order to not damage any existing concrete that is to remain.

**ABUTMENT CONCRETE REMOVAL PLAN  
STRUCTURE NO. 056-3173**

DESIGNED	AMK
CHECKED	EKM
DRAWN	RD
CHECKED	EKM



**Ciorba Group, Inc.**  
CONSULTING ENGINEERS  
5507 North Cumberland Avenue, Suite 402 Chicago, Illinois 60656  
Tel. 773.775.4009 Fax 773.775.4014 Email chicago@ciorba.com

SHEET NO. S-16 OF S-20 SHEETS	F.A. RTE.	SECTION	COUNTY	TOTAL SHEETS	SHEET NO.
		05-00310-00-BR	McHENRY	44	32
FED. ROAD DIST. NO.			ILLINOIS FED. AID PROJECT		
			CONTRACT NO. 63114		