

FOR INDEX OF SHEETS, SEE SHEET NO. 2

FOR INDEX OF HIGHWAY STANDARDS, SEE SHEET NO. 2

PROJECT LOCATED IN THE VILLAGE OF CARY

STATE OF ILLINOIS
DEPARTMENT OF TRANSPORTATION
DIVISION OF HIGHWAYS

PLANS FOR PROPOSED
FEDERAL AID HIGHWAY
F.A.U. ROUTE 0116 CRYSTAL LAKE AVENUE

WEST VILLAGE LIMITS TO SOUTH RAWSON BRIDGE ROAD

RESURFACING

PROJECT No.: M-9003 (169)

SECTION No.: 08-00055-00-RS

JOB No: C-91-202-09

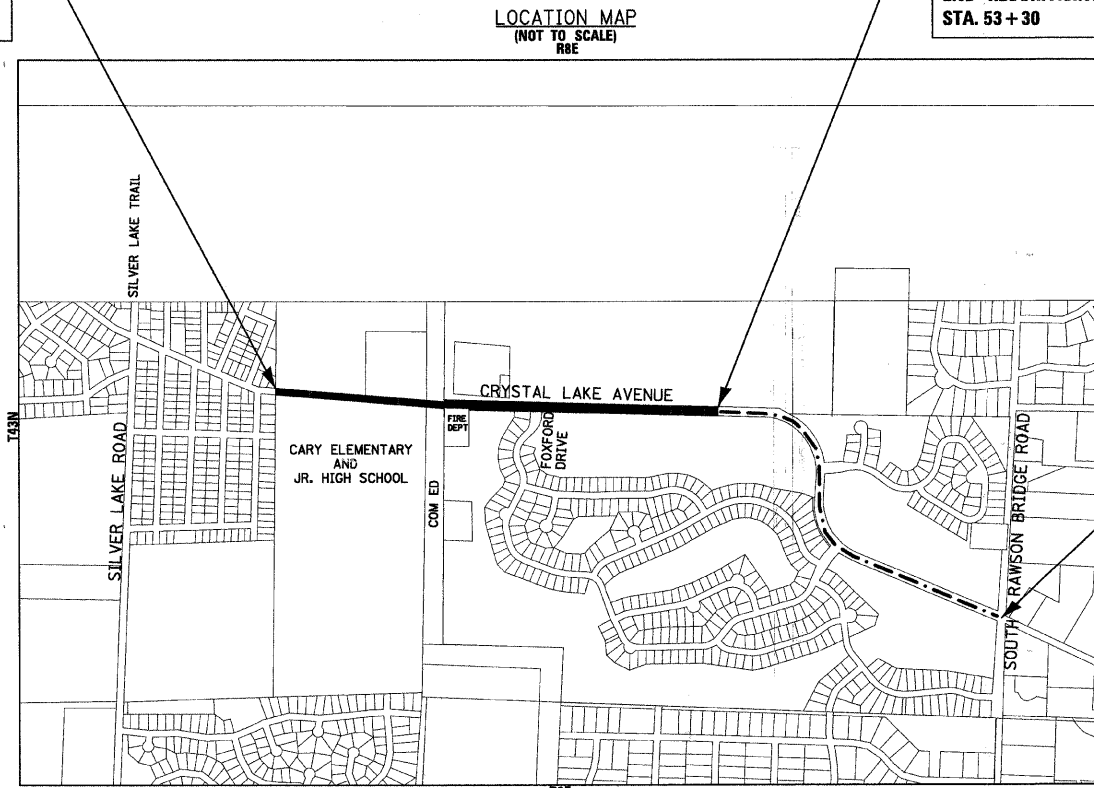
VILLAGE OF CARY

McHENRY COUNTY

F.A.U. RTE.	SECTION	COUNTY	TOTAL SHEETS	SHEET NO.
0116	08-00055-00-RS	McHENRY	18	1
STA. 13+45		TO STA. 88+93		
FED. ROAD DIST. NO C-91-202-09		ILLINOIS	FED AID PROJECT M-9003 (169)	
CONTRACT No: 63115				

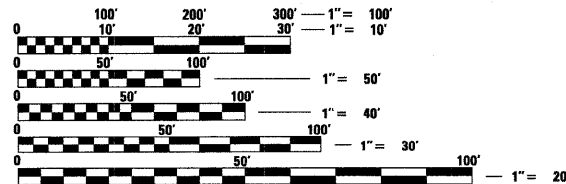
PROJECT NUMBER: M-9003 (169)
F.A.U. ROUTE 0116
CRYSTAL LAKE AVENUE
BEGIN RESURFACING
STA. 13+45

PROJECT NUMBER: M-9003 (169)
F.A.U. ROUTE 0116
CRYSTAL LAKE AVENUE
END RESURFACING / BEGIN OMISSION
STA. 53+30



PROJECT NUMBER: M-9003 (169)
F.A.U. ROUTE 0116
CRYSTAL LAKE AVENUE
END OMISSION
STA. 88+93

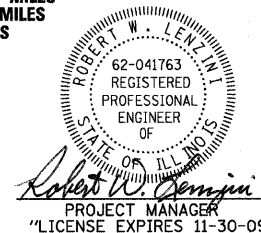
BAXTER & WOODMAN, INC
STATE OF ILLINOIS - PROFESSIONAL DESIGN FIRM
LICENSE NO. - 184-001121 - EXPIRES 4/30/2009



FULL SIZE PLANS HAVE BEEN PREPARED USING STANDARD
ENGINEERING SCALES. REDUCED SIZED PLANS WILL NOT
CONFORM TO STANDARD SCALES. IN MAKING MEASUREMENTS
ON REDUCED PLANS, THE ABOVE SCALES MAY BE USED.

J.U.L.I.E.
JOINT UTILITY LOCATION INFORMATION FOR EXCAVATION
1-800-892-0123

ALGONQUIN TOWNSHIP
GROSS LENGTH OF IMPROVEMENT = 7,548 LF OR 1.430 MILES
NET LENGTH OF IMPROVEMENT = 3,985 LF OR 0.755 MILES
LENGTH OF OMISSION = 3,563 LF OR 0.675 MILES



TRAFFIC DATA
CRYSTAL LAKE AVENUE
POSTED & DESIGN SPEED LIMIT = 35 MPH
2008 ADT = 3,950

STATE OF ILLINOIS
DEPARTMENT OF TRANSPORTATION
DIVISION OF HIGHWAYS

APPROVED 02-08-09
[Signature]
LOCAL AGENCY REPRESENTATIVE

PASSED FEBRUARY 13, 2009
[Signature]
LOCAL ROADS ENGINEER

RELEASING FOR BID
BASED ON LIMITED
REVIEW FEBRUARY 13, 2009
[Signature]
DEPUTY DIRECTOR OF
HIGHWAYS, REGION 1 ENGINEER

PRINTED BY THE AUTHORITY
OF THE STATE OF ILLINOIS

CONTRACT NO. 63115

Burlington, Wisconsin (Crystal Lake, Illinois) DeKalb, Illinois Itasca, Illinois Mokena, Illinois Grayslake, Illinois Plainfield, Illinois Rockford, Illinois Madison, Wisconsin Chicago, Illinois

262.763.7834 815.459.1260 815.787.3111 630.773.1870 708.560.7070 847.223.5088 815.609.7425 815.489.1551 608.347.1542 312.578.0050 B&W PROJECT NO.: 080936 DATE: 02/03/09

COPYRIGHT © 2008 BY BAXTER & WOODMAN, INC. STATE OF ILLINOIS - PROFESSIONAL DESIGN FIRM LICENSE NO. - 184-001121 - EXPIRES 4/30/2009 BUREAU OF LOCAL ROADS AND STREETS: ALEX HOUSEN, P.E. / KEVIN STALLWORTH, P.E. / 847-705-1168 SCHAUMBURG, IL