

| | | | | |
|-----------------------|----------------|------------------|---------------|-----------|
| F. A. A. REC. | SECTION | COUNTY | TOTAL SHEETS | SHEET NO. |
| | 06-00162-02-SW | COOK | 6 | 1 |
| STA. | TO STA. | | | |
| FED. ROAD DIST. NO. 1 | ILLINOIS | FED. AID PROJECT | CMM-9003(079) | |

CONTRACT #63119

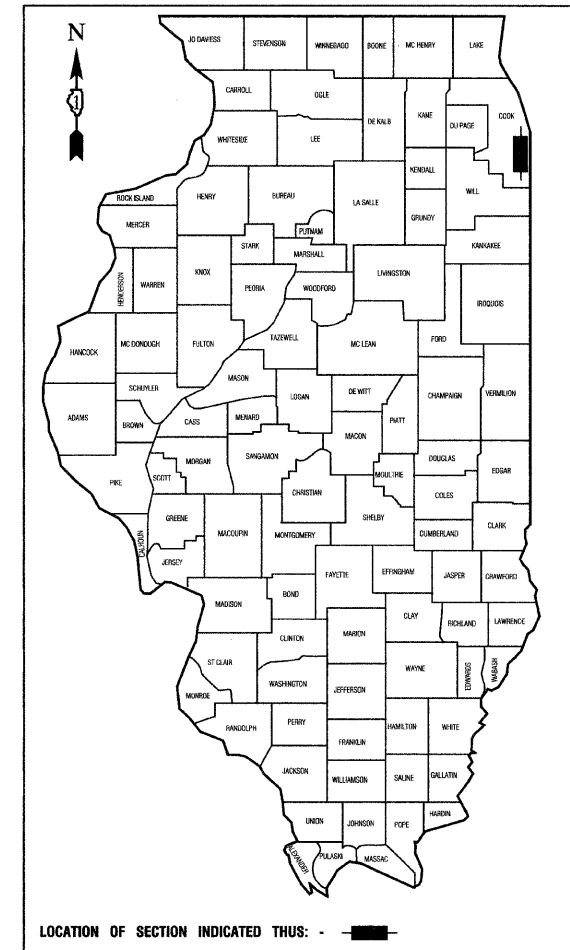
STATE OF ILLINOIS
DEPARTMENT OF TRANSPORTATION
DIVISION OF HIGHWAYS

**PLANS FOR PROPOSED
FEDERAL AID HIGHWAY**

**DORCHESTER AVENUE
151ST STREET TO THE SOUTH LEG OF 152ND STREET
SAFE ROUTES TO SCHOOL PROGRAM
SIDEWALK CONSTRUCTION AND BUS LOADING ZONE EXTENSION
CMAQ PROJECT NO.: CMM-9003(079)
L.A. SECTION NO.: 06-00162-02-SW
LEAD LOCAL AGENCY: VILLAGE of LANSING
LOCATED IN: VILLAGE of DOLTON
COOK COUNTY
C-91-020-09**

INDEX OF SHEETS
SEE SHEET NO. 2

STATE STANDARDS
SEE SHEET NO. 2



STATE OF ILLINOIS DEPARTMENT OF TRANSPORTATION
DIVISION OF HIGHWAYS

Approved: 12/19/08
James W. Schaffner
President, Village of Lansing

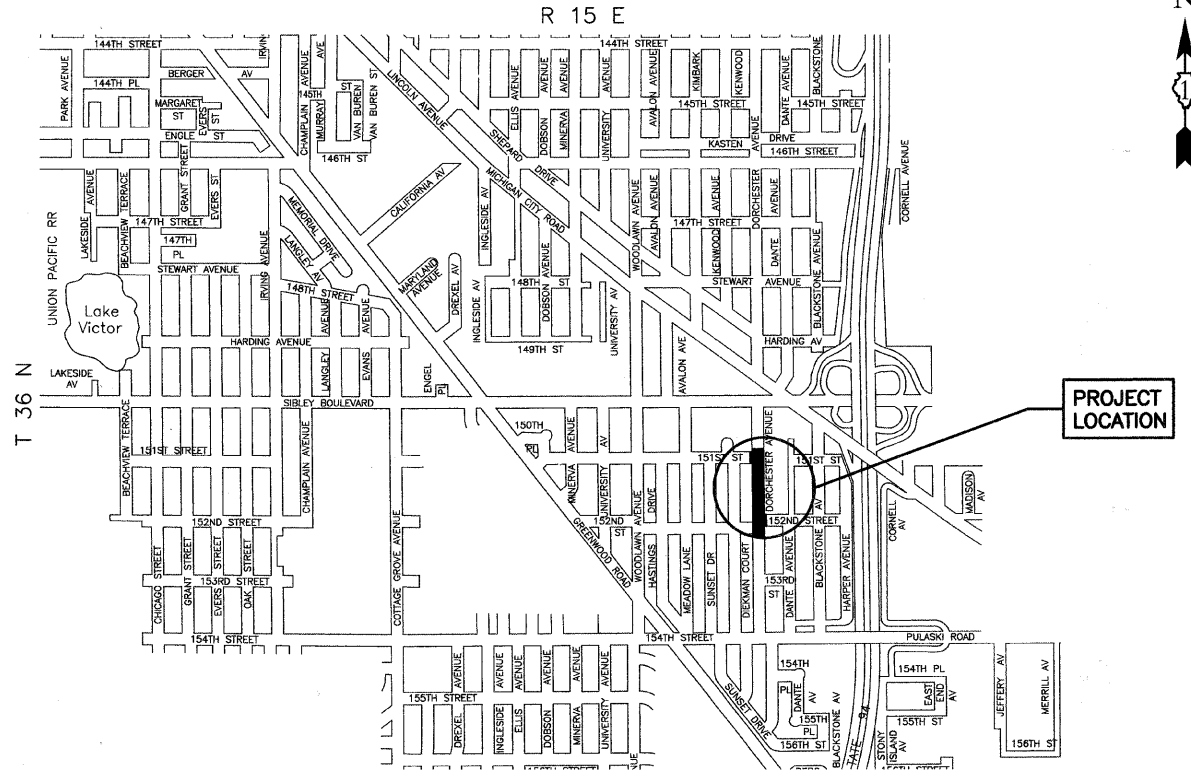
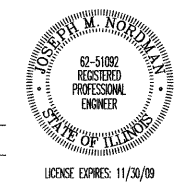
Passed: FEBRUARY 9, 2009
Christopher Holt
District 1 Engineer of Local Roads & Streets

Released for Bid Based on Limited Review: FEBRUARY 10, 2009
Diane M. O'Keefe
Deputy Director of Highways, Region 1 Engineer

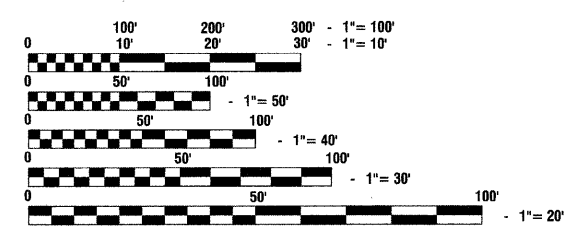
PRINTED BY THE AUTHORITY OF
THE STATE OF ILLINOIS

PREPARED BY OR UNDER THE
DIRECT SUPERVISION OF:

James M. Schaffner
12/22/08



LOCATION MAP
GROSS LENGTH=830 FEET=0.16 MILES
NET LENGTH=830 FEET=0.16 MILES



FULL SIZE PLANS HAVE BEEN PREPARED USING STANDARD
ENGINEERING SCALES, REDUCED SIZED PLANS WILL NOT
CONFORM TO STANDARD SCALES, IN MAKING MEASUREMENTS
ON REDUCED PLANS, THE ABOVE SCALES MAY BE USED.

J. U. L. I. E.
JOINT UTILITY LOCATION INFORMATION FOR EXCAVATION
1-800-892-0123 or 811

CONTRACT NO. 63119

I.D.O.T. FIELD ENGINEER: MELCHOR MANGOBA 847-705-4408
CONSULTANTS: ROBINSON ENGINEERING, LTD. 708-331-6700