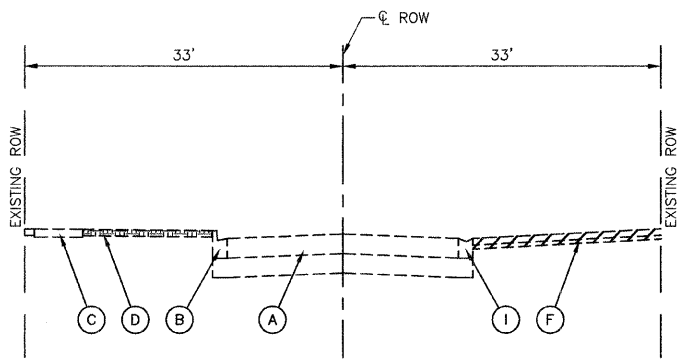
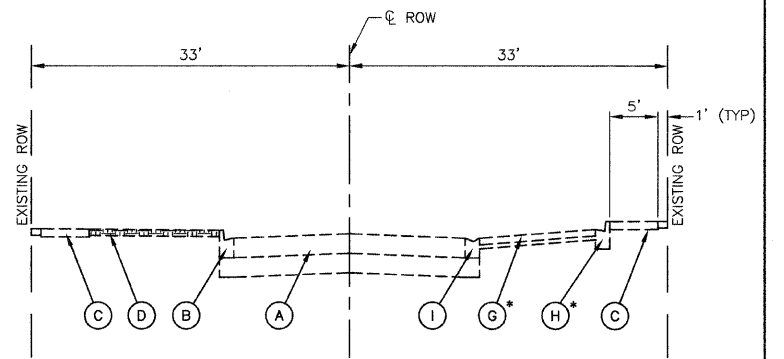


EXISTING TYPICAL CROSS SECTION  
STA 11+25 TO STA 12+13 AND STA 16+05 TO STA 18+08



EXISTING TYPICAL CROSS SECTION  
STA 12+13 TO STA 12+57

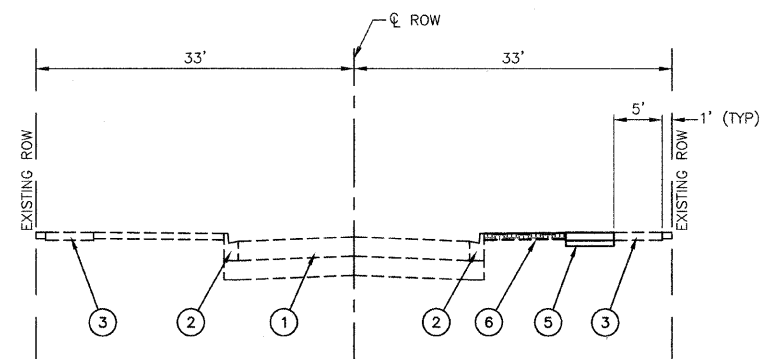


EXISTING TYPICAL CROSS SECTION  
STA 12+88 TO STA 16+05

\* STA 12+57 TO STA 12+88  
EXISTING IS GRASSED PARKWAY UP TO P.C.C.  
SIDEWALK AS SHOWN ON THE PLAN SHEET  
(REMOVAL OF GRASSED PARKWAY TO BE PAID  
FOR AS EARTH EXCAVATION.)

**EXISTING LEGEND**

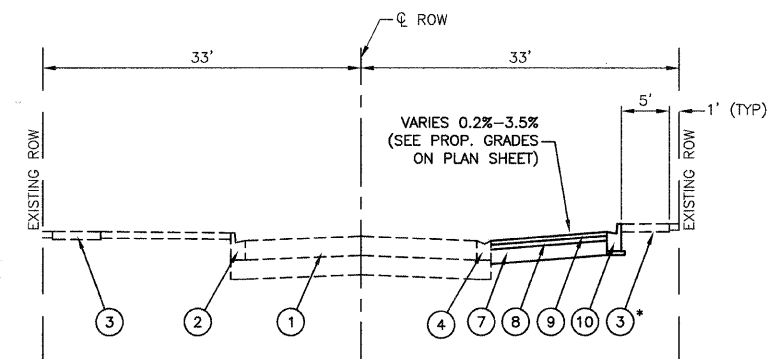
- (A) EXISTING ROADWAY TO REMAIN
- (B) EXISTING TYPE M-2.12 CURB AND GUTTER TO REMAIN
- (C) CONCRETE SIDEWALK TO REMAIN
- (D) EXISTING GRASSED PARKWAY
- (E) EXISTING GRASSED PARKWAY TO BE REMOVED  
(TO BE PAID FOR AS EARTH EXCAVATION)
- (F) EXISTING BITUMINOUS DRIVEWAY TO BE REMOVED  
(TO BE PAID FOR AS EARTH EXCAVATION)
- (G) EXISTING BITUMINOUS BUS LOADING ZONE LANE
- (H) EXISTING CURB AND GUTTER TY. M-4.12 TO REMAIN
- (I) EXISTING DEPRESSED CURB TO REMAIN



PROPOSED TYPICAL CROSS SECTION  
STA 11+25 TO STA 12+13 AND STA 16+05 TO STA 18+08

**PROPOSED LEGEND**

- (1) EXISTING ROADWAY TO REMAIN
- (2) EXISTING TYPE M-2.12 CURB AND GUTTER TO REMAIN
- (3) CONCRETE SIDEWALK TO REMAIN
- (4) EXISTING DEPRESSED CURB TO REMAIN
- (5) PROPOSED P.C.C. SIDEWALK, 5"
- (6) PROPOSED SUB-BASE GRANULAR MATERIAL, TYPE B 4"
- (7) PROPOSED TOPSOIL, FURNISH AND PLACE, 4"  
NUTRIENTS (NITROGEN, PHOSPHORUS, POTASSIUM)  
SODDING, SALT TOLERANT
- (8) AGGREGATE BASE COURSE, TYPE B - 8"
- (9) HOT MIX ASPHALT BINDER COURSE, (HMA BINDER IL-19.0, N50) - 2 1/2"
- (10) HOT MIX ASPHALT SURFACE COURSE, MIX C, N50 - 2"
- (11) PROPOSED COMBINATION CONCRETE CURB AND GUTTER, TYPE M-4.12
- (12) PROPOSED SUB-BASE GRANULAR MATERIAL, TYPE B 4"



PROPOSED TYPICAL CROSS SECTION  
STA 12+13 TO STA 12+88

\* NEW P.C.C. SIDEWALK, 5" AND SUB-BASE  
GRANULAR MATERIAL, 4" FROM STA 12+13  
TO STA 12+57

HOT-MIX ASPHALT MIXTURE REQUIREMENTS		
MIXTURE TYPE	AC TYPE	AIR VOIDS
BUS LOADING ZONE LANE EXTENSION		
HOT-MIX ASPHALT SURFACE COURSE, MIX C, N50; (IL 9.5mm)	PG 64-22	4% AT 50 Gyr
HOT-MIX ASPHALT BINDER COURSE, N50; (IL-19.0mm)	PG 64-22 *	4% AT 50 Gyr

\*WHEN RAP EXCEEDS 20%, THE NEW ASPHALT BINDER IN THE MIX SHALL BE PG 58-22  
THE UNIT WEIGHT USED TO CALCULATE ALL HOT-MIX ASPHALT SURFACE MIXTURES IS 112 lbs/sq yd/ in.