

F.A. RTE.	SECTION	COUNTY	TOTAL SHEETS	SHEET NO.
•	09-00360-00-RS	McHENRY	19	1
FED. ROAD DIST. NO.	ILLINOIS	CONTRACT NO. 63130		

*FAU 3873 (ACKMAN ROAD) AND FAU 4066 (MAIN STREET)

STATE OF ILLINOIS
DEPARTMENT OF TRANSPORTATION
DIVISION OF HIGHWAYS

**PLANS FOR PROPOSED
FEDERAL AID PROJECT**

FAU 3873 (ACKMAN ROAD)
LOCATION 1: EAST OF LAKEWOOD ROAD (FAU 3870) TO
WEST OF HUNTLEY ROAD (FAU 118)
LOCATION 2: GOLF COURSE ROAD (FAU 3872) TO CRIMSON ROAD
FAU 4066 (MAIN STREET)
WEST OF BRIDGE TO WEST OF KREUTZER ROAD (FAU 4068)
RESURFACING
SECTION NO.: 09-00360-00-RS
PROJECT NO.: M-9003 (184)
JOB NO.: C-91-231-09
McHENRY COUNTY

FOR INDEX OF SHEETS, SEE SHEET NO. 2

PROJECT LOCATED IN VILLAGE OF LAKEWOOD, CITY OF CRYSTAL LAKE, AND VILLAGE OF HUNTLEY.

TRAFFIC DATA

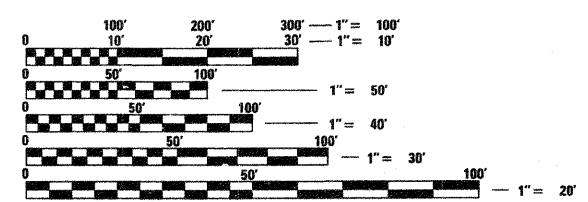
ACKMAN ROAD (LOCATION 1)
ADT (2007) = 9,960
SPEED LIMIT = 45 MPH

ACKMAN ROAD (LOCATION 2)
ADT (2007) = 13,290
SPEED LIMIT = 40 MPH

MAIN STREET
ADT (2007) = 10,170
SPEED LIMIT = 55 MPH

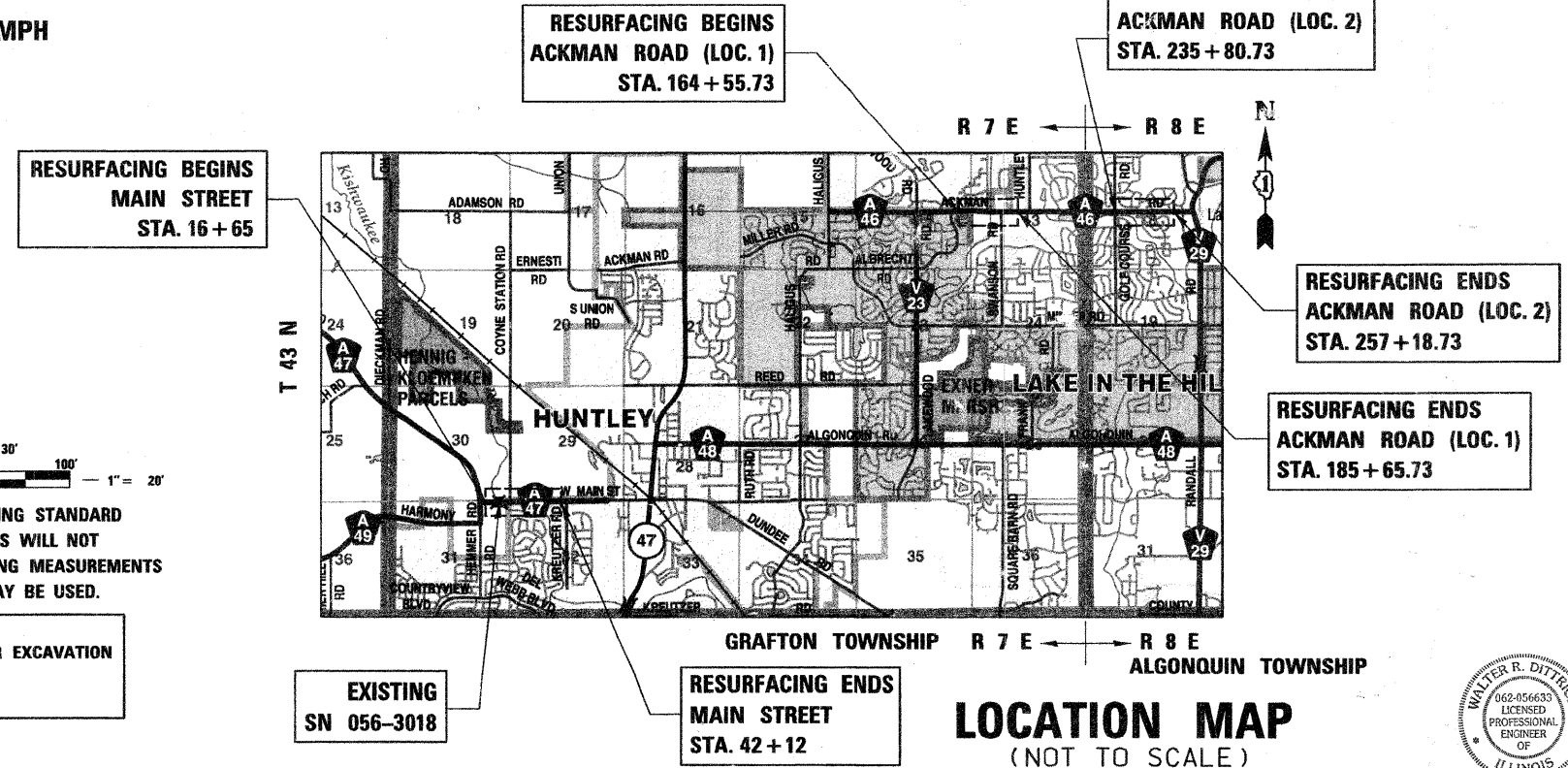


LOCATION OF SECTION INDICATED THUS: - [thick line] -



FULL SIZE PLANS HAVE BEEN PREPARED USING STANDARD ENGINEERING SCALES. REDUCED SIZED PLANS WILL NOT CONFORM TO STANDARD SCALES. IN MAKING MEASUREMENTS ON REDUCED PLANS, THE ABOVE SCALES MAY BE USED.

J.U.L.I.E.
JOINT UTILITY LOCATION INFORMATION FOR EXCAVATION
1-800-892-0123
OR 811



BUREAU OF LOCAL ROADS AND STREET: ALEX HOUSEH, P.E. KEVIN STALLWORTH, P.E. 847-705-4169 SCHAUMBURG, IL

CONTRACT NO. 63130

ACKMAN ROAD (GROSS (NET) LENGTH) = 4248 LF = 0.805 MILE
MAIN STREET (GROSS (NET) LENGTH) = 2547 LF = 0.482 MILE



W.R.D.
exp. 11-30-09

STATE OF ILLINOIS
DEPARTMENT OF TRANSPORTATION
DIVISION OF HIGHWAYS

APPROVED JANUARY 26 20 09

Joseph R. Kopalinski Jr.
COUNTY ENGINEER

PASSED FEBRUARY 13 20 09

Christophe L. ...
DISTRICT 1 ENGINEER OF LOCAL ROADS & STREETS

RELEASING FOR BID
BASED ON LIMITED
REVIEW FEBRUARY 13, 20 09

Diane M. O'Keefe
DEPUTY DIRECTOR OF HIGHWAYS, REGION 1 ENGINEER

PRINTED BY THE AUTHORITY
OF THE STATE OF ILLINOIS