

F.A.U. RTE.	SECTION	COUNTY	TOTAL SHEETS	SHEET NO.
2991	08-00095-02-PV	DUPAGE	55	1

55+2 (57)

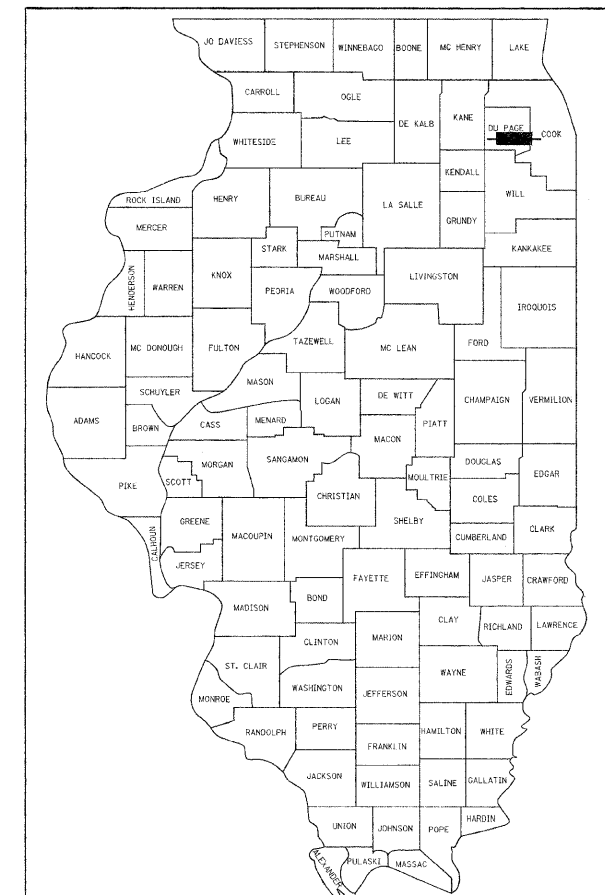
INDEX OF SHEETS

- 1 COVER SHEET
- 2 GENERAL NOTES
- 3 SUMMARY OF QUANTITIES
- 4-5 TYPICAL SECTIONS
- 6-7 SCHEDULES OF QUANTITIES
- 8-9 ALIGNMENT, TIES, AND BENCHMARKS
- 10-13 PLAN AND PROFILE
- 14-19 SUGGESTED MAINTENANCE OF TRAFFIC
- 20-23 DRAINAGE AND UTILITIES
- 24-25 LANDSCAPING, SIGNING AND PAVEMENT MARKING
- 25A-25B TEMPORARY EROSION AND SEDIMENT CONTROL PLAN
- 26-29 TRAFFIC SIGNAL PLANS
- 30-39 CROSS SECTIONS
- 40 BORING LOGS
- 41 DETAIL OF STORM SEWER CONNECTION TO EXISTING SEWER
- 42 DETAILS FOR FRAMES AND LIDS ADJUSTMENT WITH MILLING
- 43 PAVEMENT PATCHING FOR HMA SURFACED PAVEMENT
- 44 CURB OR CURB AND GUTTER REMOVAL AND REPLACEMENT
- 45 TRAFFIC CONTROL AND PROTECTION FOR SIDE ROADS, INTERSECTIONS, & DRIVEWAYS
- 46 DISTRICT ONE TYPICAL PAVEMENT MARKINGS
- 47 PAVEMENT MARKING LETTERS AND SYMBOLS FOR TRAFFIC STAGING
- 48 DISTRICT 1 MAST ARM MOUNTED STREET NAME SIGNS
- 49-52 DISTRICT 1 STANDARD TRAFFIC SIGNAL DESIGN DETAILS
- 53 DRIVEWAY DETAILS DISTANCE BETWEEN ROW AND FACE OF CURB EDGE OF SHOULDER > = 15' (4.5m)
- 54 DRIVEWAY DETAILS DISTANCE BETWEEN ROW AND FACE OF CURB < 15' (4.5m)
- 55 BUTT JOINT AND HMA TAPER DETAILS

STATE OF ILLINOIS
DEPARTMENT OF TRANSPORTATION
DIVISION OF HIGHWAYS

**PROPOSED FEDERAL
AID HIGHWAY**

FAU ROUTE 2991 (PRAIRIE AVENUE) STAGE II
SECTION 08-00095-02-PV
FOREST AVENUE TO FAIRVIEW AVENUE
PAVEMENT RECONSTRUCTION AND RESURFACING
PROJECT M-8003(747)
DUPAGE COUNTY
C-91-127-07



LOCATION OF SECTION INDICATED THUS: - [highlighted box]

TRAFFIC DATA

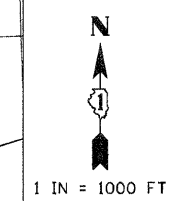
PRAIRIE AVE AT BELMONT ROAD
2006 ADT = 4050
2030 ADT = 5470
PRAIRIE AVE AT MAIN ST
2006 ADT = 6300
2030 ADT = 8505
PRAIRIE AVE AT FAIRVIEW AVE
2006 ADT = 2420
2030 ADT = 3270

STATE OF ILLINOIS DEPARTMENT OF TRANSPORTATION, DIVISION OF HIGHWAYS

APPROVED February 9, 2009
Michael D. Miller
VILLAGE OF DOWNERS GROVE, ASST. DIRECTOR OF PUBLIC WORKS

PASSED FEBRUARY 13, 2009
Cheryl Herbert
DISTRICT 1 ENGINEER OF LOCAL ROADS & STREETS

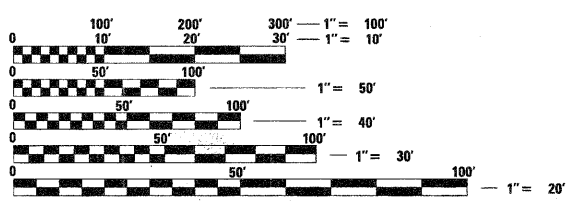
RELEASING FOR BID
BASED ON LIMITED
REVIEW FEBRUARY 13, 2009
Diana M. O'Keefe
DEPUTY DIRECTOR OF HIGHWAYS, REGION 1 ENGINEER



Mark T. Heaton
MARK T. HEATON, P.E.
LICENSE EXPIRES: 11/30/2009

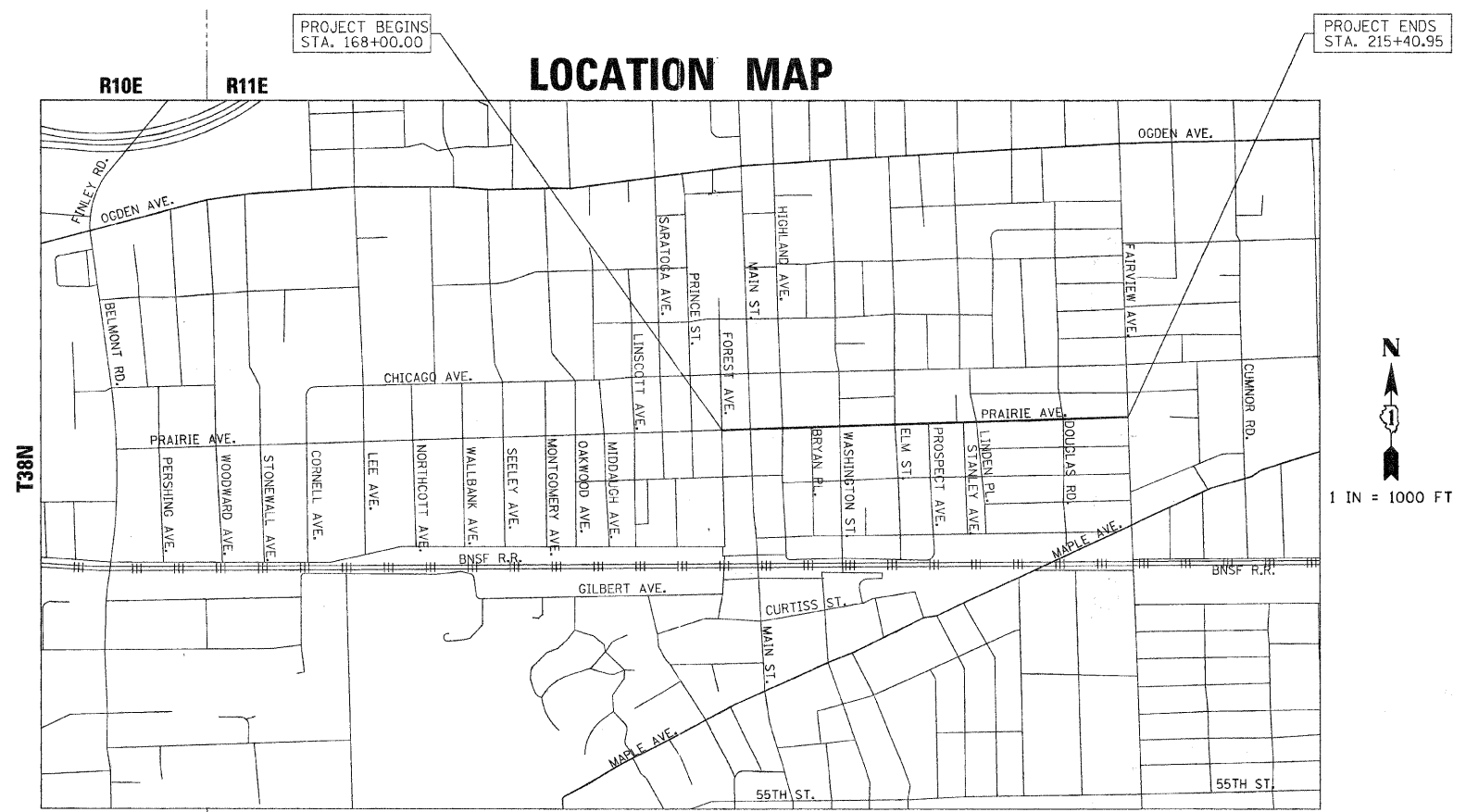
2/9/2009
DATE

PROJECT LOCATED IN THE VILLAGE OF DOWNERS GROVE



FULL SIZE PLANS HAVE BEEN PREPARED USING STANDARD ENGINEERING SCALES. REDUCED SIZED PLANS WILL NOT CONFORM TO STANDARD SCALES. IN MAKING MEASUREMENTS ON REDUCED PLANS, THE ABOVE SCALES MAY BE USED.

J.U.L.I.E.
JOINT UTILITY LOCATION INFORMATION FOR EXCAVATION
1-800-892-0123



LISLE TOWNSHIP | DOWNERS GROVE NORTH TOWNSHIP

GROSS LENGTH OF PROJECT = 4740.95 FT = 0.89 MILE
NET LENGTH OF PROJECT = 4740.95 FT = 0.89 MILE

GCE Engineering, Inc. (Illinois)
5200 Main Street, Suite 210
Downers Grove, Illinois
630.512.8800

**PRINTED BY THE AUTHORITY
OF THE STATE OF ILLINOIS**

PLOT DATE = 2/9/2009
FILE NAME = M:\Downers Grove\08-00095-02-PV\phases2\Cad\Utilities\ables\0102_TL01_P102.dgn
PLOT SCALE = 50.00000 ' / IN.
CONSULTANT SERVICES ENGINEER
GCE ENGINEERING, INC. (ILLINOIS) (630) 512-8800
MARILYN SOLOMON
FIELD ENGINEER (847) 706-4487