

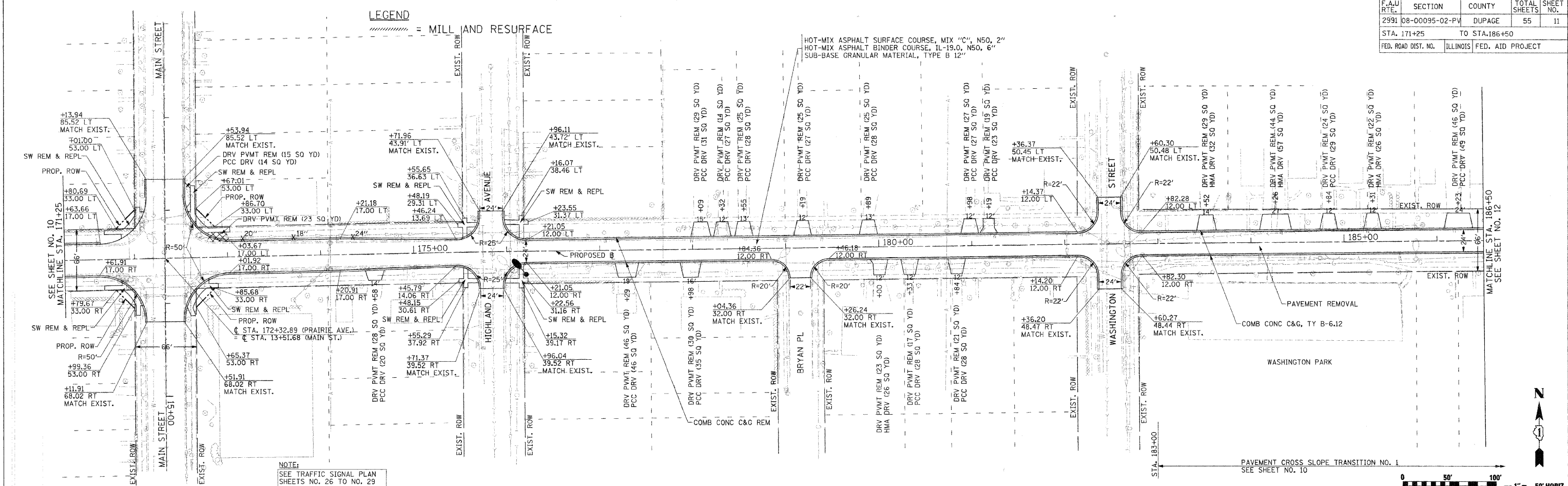
F.A.U. RTE.	SECTION	COUNTY	TOTAL SHEETS	SHEET NO.
2991	08-00095-02-PV	DUPAGE	55	11
STA. 171+25		TO STA. 186+50		
FED. ROAD DIST. NO.		ILLINOIS FED. AID PROJECT		

**LEGEND**  
 = MILL AND RESURFACE

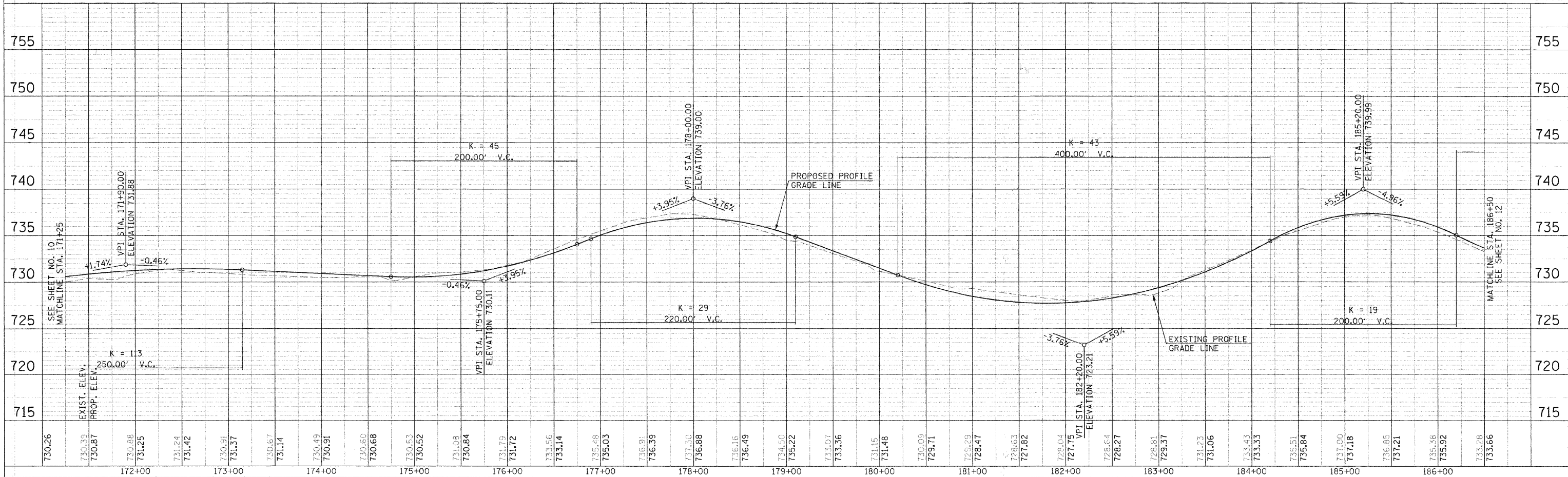
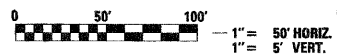
HOT-MIX ASPHALT SURFACE COURSE, MIX "C", N50, 2"  
 HOT-MIX ASPHALT BINDER COURSE, IL-19.0, N50, 6"  
 SUB-BASE GRANULAR MATERIAL, TYPE B 12"

PLAN	DATE
BY	
DATE	
BY	
DATE	
BY	
DATE	

PROFILE	DATE
BY	
DATE	
BY	
DATE	
BY	
DATE	



NOTE:  
 SEE TRAFFIC SIGNAL PLAN SHEETS NO. 26 TO NO. 29 FOR ADDITIONAL DETAILS



PLOT DATE = 2/9/2009  
 FILE NAME = m:\dwr\m\grove\1012\plan\phase2\load\deliverables\1012\_PPR\PR18.dgn  
 PLOT SCALE = 50.00000 / IN.