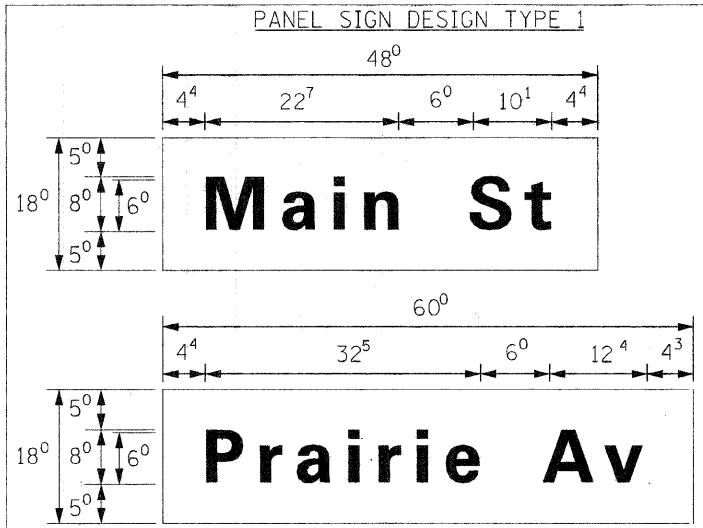
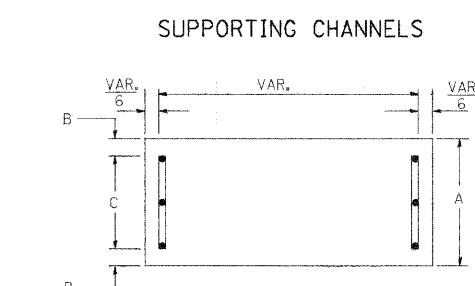


F.A. DIST.	SECTION	COUNTY	TOTAL SHEETS	SHEET NO.
2991	08-00095-02-EV	DUPAGE	55	48
STA.	TO STA.			
FED. ROAD DIST. NO. 7	ELIGIBLE	FED. AID PROJECT		

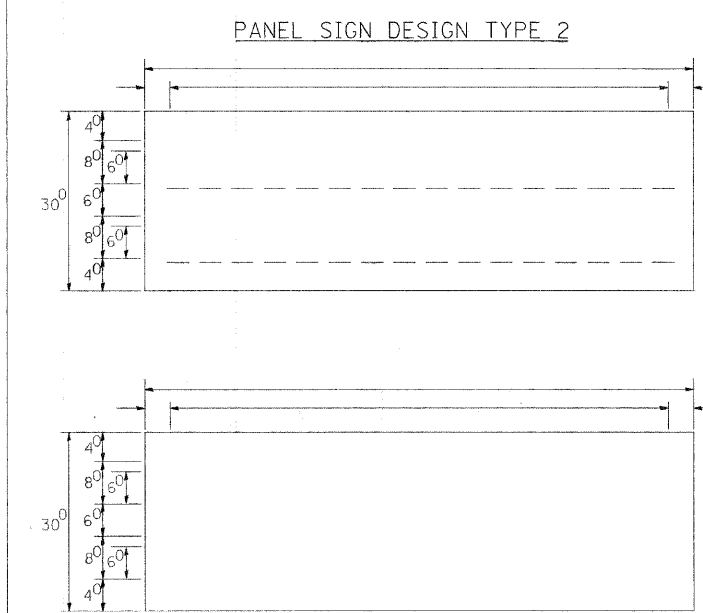
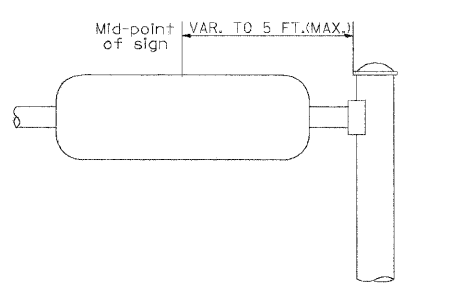


--- Sq. M. each  
**6.0** Sq. Ft. each  
 2 Required  
 Design Series D

--- Sq. M. each  
**7.5** Sq. Ft. each  
 2 Required  
 Design Series D

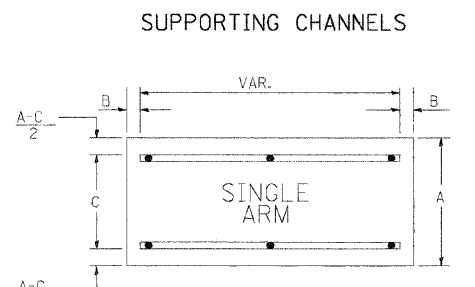


A	B	C
18"	2"	14"

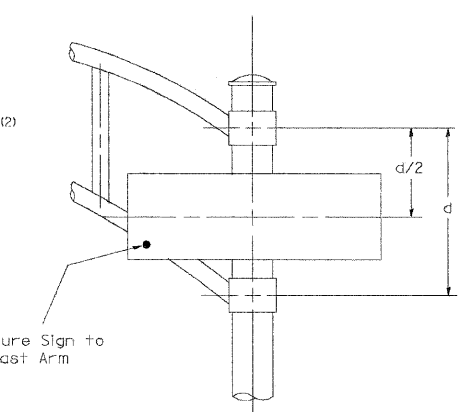


--- Sq. M. each  
 --- Sq. Ft. each  
 --- Required  
 Design Series ---

--- Sq. M. each  
 --- Sq. Ft. each  
 --- Required  
 Design Series ---



A	B	C
18"	2"	12"
30"	2"	22"



**DUAL ARM**  
**SIGNFIX ALUMINUM CHANNEL FRAMING SYSTEM**  
 Shall be used. See Note #5.

Upper Case to Lower Case  
 Spacing Chart 8-6 Inch Series "C & D"

EXAMPLE, 2 <sup>3</sup> DENOTES  $\frac{3''}{8}$

FIRST LETTER	SECOND LETTER															
	acde		bhikl		f w		j		s t		v y		x		z	
	C	D	C	D	C	D	C	D	C	D	C	D	C	D	C	D
A W X	12	14	14	15	12	14	06	10	11	14	06	10	11	12	12	14
B	14	15	20	21	14	15	11	12	14	15	12	14	12	14	16	17
C E G	14	15	20	21	12	14	06	10	12	14	12	14	14	15	14	15
D O Q R	14	15	20	21	14	15	06	10	12	14	12	14	14	15	14	15
F	05	06	14	15	06	10	05	06	06	10	06	10	06	10	11	12
H I M N	20	21	22	24	20	21	14	15	16	17	16	17	20	21	20	21
J U	20	21	20	21	16	17	14	15	16	17	16	17	16	17	20	21
K L	11	12	16	17	11	12	05	06	11	12	11	12	11	12	12	14
P	12	14	14	15	12	14	05	06	11	12	11	12	12	14	12	14
S	12	14	16	17	12	14	06	10	12	14	12	14	12	14	12	14
T	11	12	16	17	06	10	06	10	11	12	11	12	11	12	12	14
V	06	10	14	15	11	12	06	10	12	14	12	14	12	14	12	14
Y	05	06	14	15	06	10	05	06	05	07	05	06	06	10	11	12
Z	16	17	22	24	16	17	12	14	16	17	16	17	16	17	20	21

Lower Case to Lower Case  
 Spacing Chart 6 Inch Series "C & D"

FIRST LETTER	SECOND LETTER															
	acde		bhikl		f w		j		s t		v y		x		z	
	C	D	C	D	C	D	C	D	C	D	C	D	C	D	C	D
a d h g i j	16	17	22	24	16	17	12	14	14	15	14	15	16	17	16	17
l m n q u																
b f k o p s	12	14	16	17	11	12	05	06	11	12	11	12	12	14	12	14
c e	12	14	16	17	12	14	06	10	12	14	12	14	12	14	12	14
r	06	10	12	14	06	10	03	03	05	06	05	06	06	10	06	10
t z	12	14	16	17	12	14	06	10	11	12	11	12	12	14	12	14
v y	11	12	14	15	11	12	05	06	06	10	06	10	11	12	11	12
w	11	12	14	15	11	12	05	06	11	12	11	12	11	12	12	14
x	12	14	16	17	11	12	05	06	11	12	11	12	11	12	12	14

Number to Number  
 Spacing Chart 8 Inch Series "C & D"

FIRST NUMBER	SECOND NUMBER																			
	0		1		2		3		4		5		6		7		8		9	
	C	D	C	D	C	D	C	D	C	D	C	D	C	D	C	D	C	D	C	D
0 9	16	17	16	17	14	15	12	14	14	15	14	15	16	17	12	14	16	17	16	17
1	20	21	20	21	20	21	16	17	14	15	20	21	20	21	14	15	20	21	20	21
2 3 4	14	15	14	15	14	15	12	14	12	14	14	15	14	15	11	12	16	17	14	15
5	14	15	14	15	14	15	11	12	11	12	14	15	14	15	11	12	14	15	14	15
6	16	17	14	15	14	15	12	15	12	14	14	15	14	15	11	12	14	15	14	15
7	12	14	12	14	14	15	12	15	05	06	12	14	14	15	11	12	14	15	12	14
8	16	17	16	17	14	15	12	15	12	14	14	15	16	17	12	14	16	17	14	15

UPPER AND LOWER CASE LETTER WIDTHS

LETTERS	6 INCH UPPER CASE LETTERS				8 INCH UPPER CASE LETTERS				6 INCH LOWER CASE LETTERS			
	SERIES		SERIES		SERIES		SERIES		SERIES		SERIES	
	C	D	C	D	C	D	C	D	C	D	C	D
A	36	50	50	65	a	35	42					
B	32	40	43	53	b	35	42					
C	32	40	43	53	c	35	41					
D	32	40	43	53	d	35	42					
E	30	35	40	47	e	35	42					
F	30	35	40	47	f	23	26					
G	32	40	43	53	g	35	42					
H	32	40	43	53	h	35	42					
I	07	07	11	12	i	11	11					
J	30	36	40	50	j	20	22					
K	32	41	43	54	k	35	42					
L	30	35	40	47	l	11	11					
M	37	45	51	61	m	60	70					
N	32	40	43	53	n	35	42					
O	34	42	45	55	o	36	43					
P	32	40	43	53	p	35	42					
Q	34	42	45	55	q	35	42					
R	32	40	43	53	r	26	32					
S	32	40	43	53	s	36	42					
T	30	35	40	47	t	27	32					
U	32	40	43	53	u	35	42					
V	35	44	47	60	v	42	47					
W	44	52	60	70	w	55	64					
X	34	40	45	53	x	44	51					
Y	36	50	50	66	y	46	53					
Z	32	40	43	53	z	36	43					

NUMBER	6 INCH SERIES		8 INCH SERIES	
	C	D	C	D
1	12	14	15	20
2	32	40	43	53
3	32	40	43	53
4	35	43	47	57
5	32	40	43	53
6	32	40	43	53
7	32	40	43	53
8	32	40	43	53
9	32	40	43	53
0	34	42	45	55

NOTE: SIGN DIMENSIONS ARE IN ENGLISH UNITS

GENERAL NOTES

- WHERE MAST ARM MOUNTED STREET NAME SIGNS ARE SPECIFIED, THE MAST ARM ASSEMBLY AND POLES SHALL BE DESIGNED TO SUPPORT THE LOADINGS CALLED FOR ON STANDARDS 834001, 834006 AND 834011, AS APPLICABLE, PLUS TWO (2) SIGN PANELS 2'-6" x 6'-0" MOUNTED AS SHOWN. THE DESIGN SHALL BE IN ACCORDANCE WITH THE REQUIREMENTS OF THE CURRENT "STANDARD SPECIFICATIONS FOR STRUCTURAL SUPPORTS FOR HIGHWAY SIGNS, LUMINAIRES, AND TRAFFIC SIGNALS" AS PUBLISHED BY THE AMERICAN ASSOCIATION OF STATE HIGHWAY AND TRANSPORTATION OFFICIALS FOR 80 M.P.H. WIND VELOCITY.
- ALL SIGNS SHALL HAVE A WHITE REFLECTORIZED LEGEND AND BORDER ON A GREEN REFLECTORIZED BACKGROUND, TYPE A SHEETING.
- THE SIGN LENGTH SHOULD BE INCREASED IN 6-INCH INCREMENTS, BUT THE OVERALL LENGTH SHOULD NOT EXCEED 6'-0".
- ALL BORDERS SHALL BE 3/4" WIDE AND CORNER RADIUS SHALL BE 2-1/4".
- SIGNFIX ALUMINUM CHANNEL FRAMING SYSTEM SHALL BE USED FOR ALL SIGNS ATTACHED TO SIGNAL POLES AND POSTS. LOCAL SUPPLIERS OF THE SIGNFIX ALUMINUM CHANNEL FRAMING SYSTEM ARE:
  - \* A.K.T. CORPORATION, SCHALMERSBURG, IL
  - \* AMERICAN FABRICATION CO., CHICAGO HEIGHTS, IL
  - \* TUCKER COMPANY, INC., WAUWATOSA, WI
  - \* WESTERN TRAFFIC CONTROL INC., CICERO, IL

PARTS LISTING

SIGN CHANNEL	PART #HPN053 (MED. CHANNEL)
SIGN SCREWS	1/4" x 14 x 1" H.W.H. #3
BRACKETS	SELF TAPPING WITH NEOPRENE WASHER
	PART #HPN034 (UNIVERSAL)
	CHANNEL CLAMPS WITH STAINLESS STEEL STRAPPING

OTHER BRANDS OF MOUNTING HARDWARE ARE ACCEPTABLE, BASED UPON THE DEPARTMENT'S APPROVAL AND COMPATIBILITY WITH THE CHANNEL/BACKET OF THE ABOVE PRODUCT.

REVISIONS

NAME	DATE
CREATED	2/79
D.A.Z./ D.A.C.	11/80
	6/98
CADD	10/00

ILLINOIS DEPARTMENT OF TRANSPORTATION  
 DISTRICT 1  
 MAST ARM MOUNTED  
 STREET NAME SIGNS

SCALE: NONE  
 DATE: 12/19/2002  
 DRAWN BY: TJR  
 CHECKED BY: RFK  
 TS 2  
 REVISION DATE: 10/01/00