

STATE OF ILLINOIS
 DEPARTMENT OF TRANSPORTATION
 DIVISION OF HIGHWAYS
 PLANS FOR PROPOSED
 FEDERAL AID HIGHWAY

F.A.U. R.T.E.	SECTION	COUNTY	TOTAL SHEETS	SHEET NO.
08-00110-00-RS		MCHENRY	43	1
FED. ROAD DIST. NO. 1	ILLINOIS	CONTRACT NO. 63139		

INDEX OF SHEETS

SHEET NO.	TITLE
1	COVER SHEET
2	GENERAL NOTES, INDEX OF SHEETS, STATE STANDARDS, SUMMARY OF QUANTITIES
3-5	TYPICAL SECTIONS
6-37	PLAN SHEETS
38-43	STANDARDS

WOODSTOCK STREET FAU 120 FROM US14 FAP 305 TO WALKUP AVE FAU 85
 DOLE AVENUE FAU 4057 FROM LAKE SHORE DR FAU 579 TO WOODSTOCK STREET FAU 120
 MCHENRY AVE FAU 120 FROM US14 FAP305 TO CRYSTAL LAKE AVE FAU 116
 ELMHURST FAU 120 FROM CRYSTAL LAKE AVE FAU 116 TO DOLE AVE 4057
 GOLF COURSE ROAD FAU 3872 FROM BARLINA RD FAU 3871 TO WINDSOR DR
 BARLINA ROAD FAU 3871 FROM HUNTLEY RD FAU 118 TO GOLF COURSE RD FAU 3872
 HUNTLEY ROAD FAU 118 FROM BARD RD FAU 2870 TO CITY LIMITS

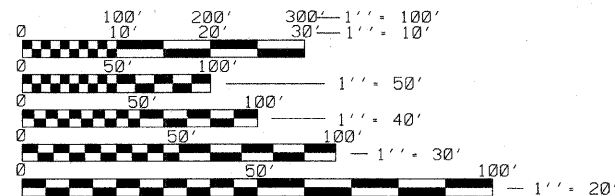
HIGHWAY STANDARDS

442201-03	CLASS C&D PATCHES
606001-04	CONCRETE CURB TYPE B AND COMBINATION CONCRETE CURB AND GUTTER
701501-05	URBAN LANE CLOSURE, 2L, 2W UNDIVIDED
701901-01	TRAFFIC CONTROL DEVICES
780001-02	TYPICAL PAVEMENT MARKINGS

TRAFFIC DATA

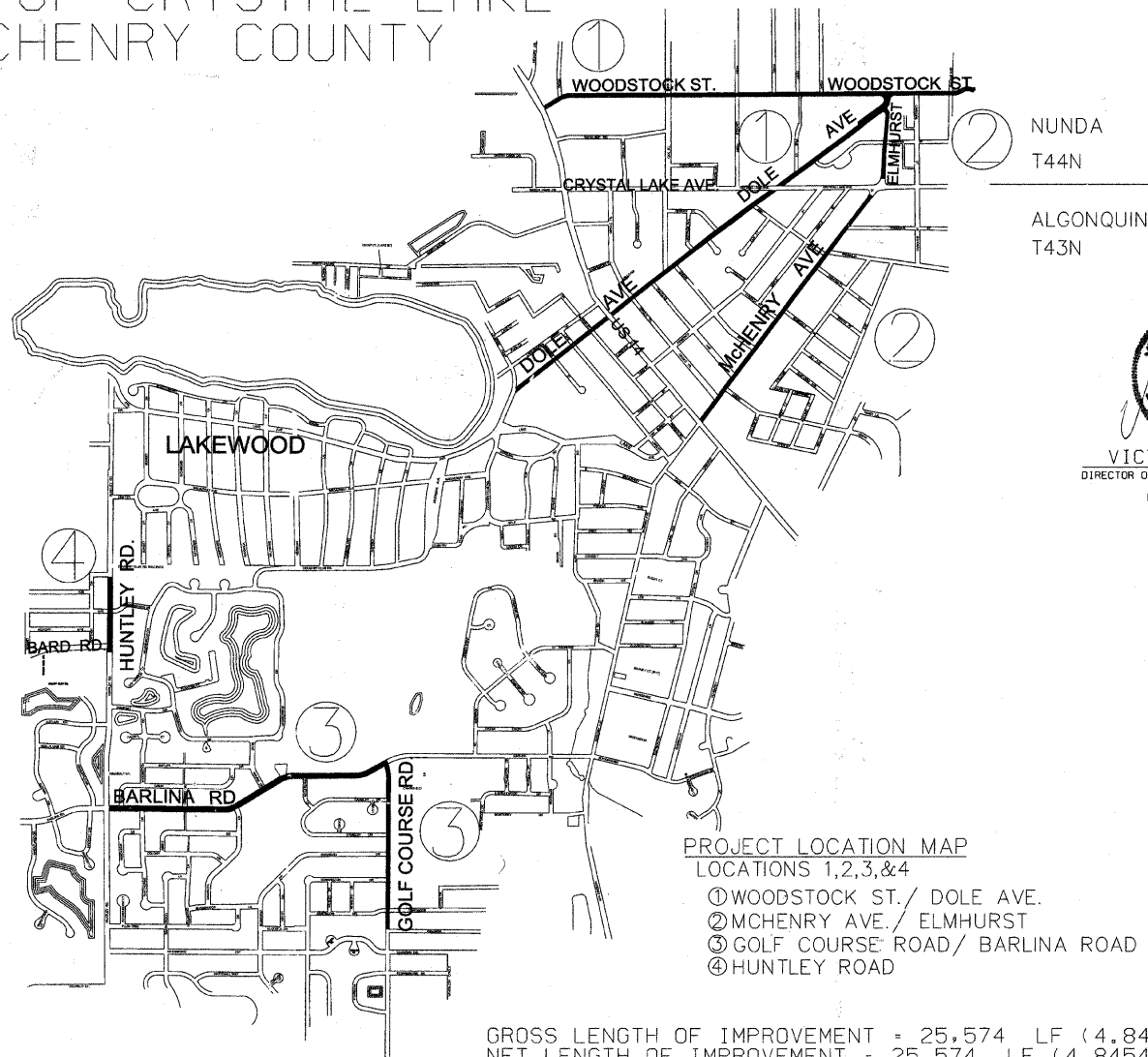
WOODSTOCK STREET	
POSTED & DESIGN SPEED	• 30
2008 ADT	• 3389
DOLE AVENUE	
POSTED & DESIGN SPEED	• 30
2008 ADT	• 7174
MCHENRY AVE	
POSTED & DESIGN SPEED	• 30
2008 ADT	• 10560
ELMHURST	
POSTED & DESIGN SPEED	• 30
2008 ADT	• 1480
GOLF COURSE ROAD	
POSTED & DESIGN SPEED	• 30
2008 ADT	• 8039
BARLINA ROAD	
POSTED & DESIGN SPEED	• 30
2008 ADT	• 4510
HUNTLEY ROAD	
POSTED & DESIGN SPEED	• 35
2008 ADT	• 6830

J.U.L.I.E.
 JOINT UTILITY LOCATION INFORMATION FOR EXCAVATION
 1-800-892-0123
 OR 811



FULL SIZE PLANS HAVE BEEN PREPARED USING STANDARD ENGINEERING SCALES. REDUCED SIZED PLANS WILL NOT CONFORM TO STANDARD SCALES. IN MAKING MEASUREMENTS ON REDUCED PLANS, THE ABOVE SCALES MAY BE USED.

RESURFACING
 PROJECT NO. : M-9003(196)
 JOB NO. : C-91-241-09
 SECTION 08-00110-00-RS
 CITY OF CRYSTAL LAKE
 MCHENRY COUNTY



PROJECT LOCATION MAP
 LOCATIONS 1,2,3,&4
 ① WOODSTOCK ST./ DOLE AVE.
 ② MCHENRY AVE./ ELMHURST
 ③ GOLF COURSE ROAD/ BARLINA ROAD
 ④ HUNTLEY ROAD

GROSS LENGTH OF IMPROVEMENT = 25,574 LF (4.8454 MI)
 NET LENGTH OF IMPROVEMENT = 25,574 LF (4.8454 MI)



VICTOR RAMIREZ
 DIRECTOR OF ENGINEERING AND BUILDING/
 CITY ENGINEER
 LICENSE EXPIRES

STEVE CARRUTHERS
 PROJECT MANAGER

STATE OF ILLINOIS
 DEPARTMENT OF TRANSPORTATION
 DIVISION OF HIGHWAYS

APPROVED FEBRUARY 13, 2009
[Signature]
 CITY OF CRYSTAL LAKE, CITY ENGINEER

PASSED FEBRUARY 18, 2009
[Signature]
 DISTRICT ENGINEER OF LOCAL ROADS AND STREETS

RELEASING FOR BID
 BASED ON LIMITED
 REVIEW FEBRUARY 20, 2009
[Signature]
 DEPUTY DIRECTOR OF
 HIGHWAYS, REGION 1 ENGINEER

PRINTED BY THE AUTHORITY
 OF THE STATE OF ILLINOIS

CONTRACT NO. 63139

ASSOCIATE FIELD ENGINEER: KEVIN STALLWORTH, P.E. (847) 705-4169