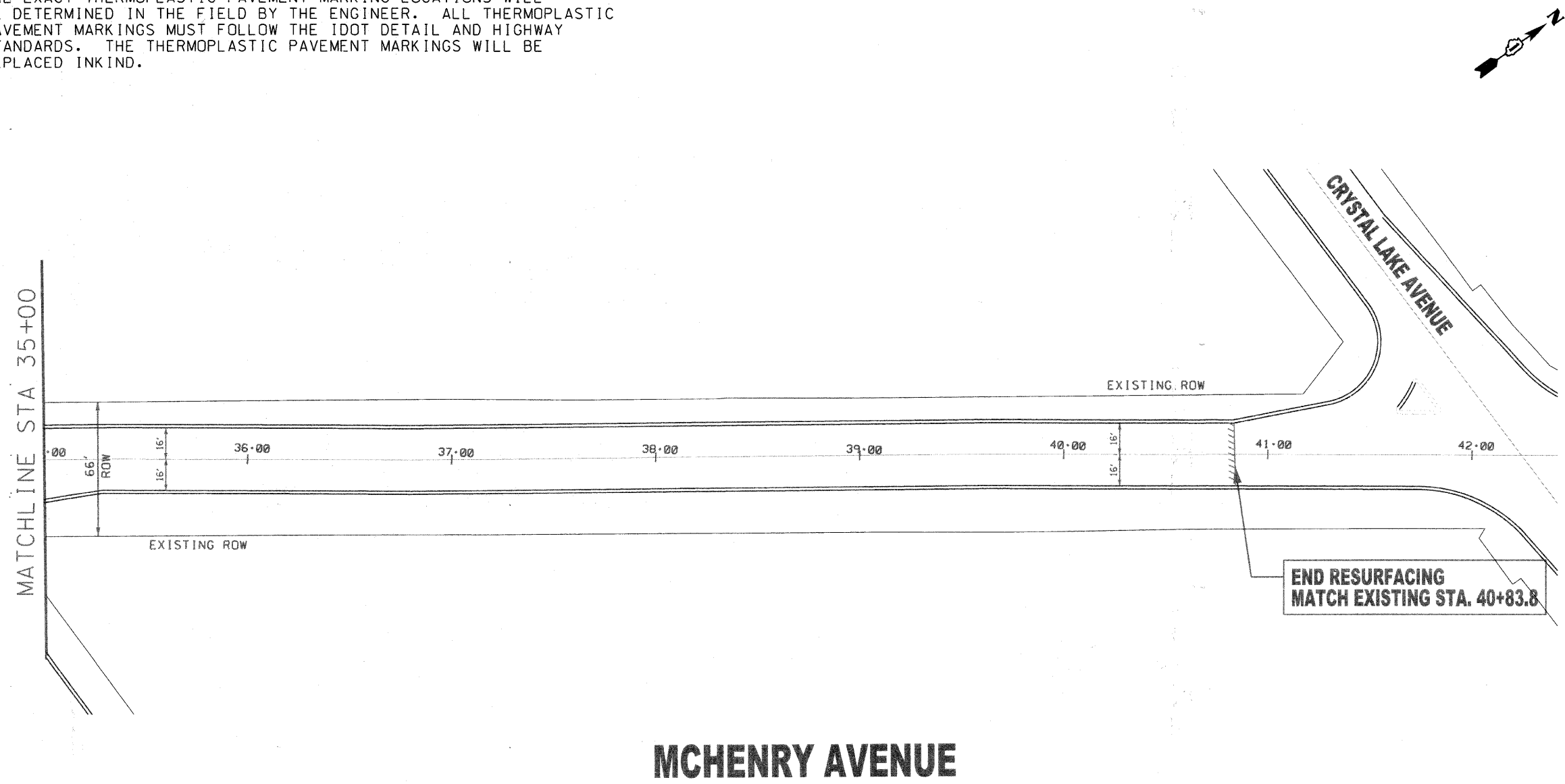


NOTES:

1. COMBINATION CONCRETE CURB AND GUTTER REMOVAL TO BE DETERMINED BY THE RESIDENT ENGINEER IN THE FIELD.
2. PAVEMENT PATCHING LIMITS TO BE DETERMINED BY THE RESIDENT ENGINEER IN THE FIELD.
3. THE EXACT THERMOPLASTIC PAVEMENT MARKING LOCATIONS WILL BE DETERMINED IN THE FIELD BY THE ENGINEER. ALL THERMOPLASTIC PAVEMENT MARKINGS MUST FOLLOW THE IDOT DETAIL AND HIGHWAY STANDARDS. THE THERMOPLASTIC PAVEMENT MARKINGS WILL BE REPLACED INKIND.



MCHENRY AVENUE

FILE NAME = MCHENRY.SHEETS.DGN	DESIGNED <i>SCC</i>	REVISED <i>2-25-2009</i>	STATE OF ILLINOIS DEPARTMENT OF TRANSPORTATION	City of Crystal Lake, Illinois STP (LAPP) IMPROVEMENTS	Location No. 2: MCHENRY AVENUE	F.A. -	SECTION	COUNTY	TOTAL	SHEET
	DRAWN <i>JAM</i>	REVISED				120	08-00110-00-RS	MCHENRY	43	25
	PLOT SCALE = 60 (plot to 11x17)	CHECKED <i>EDM</i>				REVISED	CONTRACT NO. 63139			
	PLOT DATE = 11-26-08	DATE <i>11-26-2008</i>				REVISED	FED. ROAD DIST. NO. 1 ILLINOIS FED. AID PROJECT			