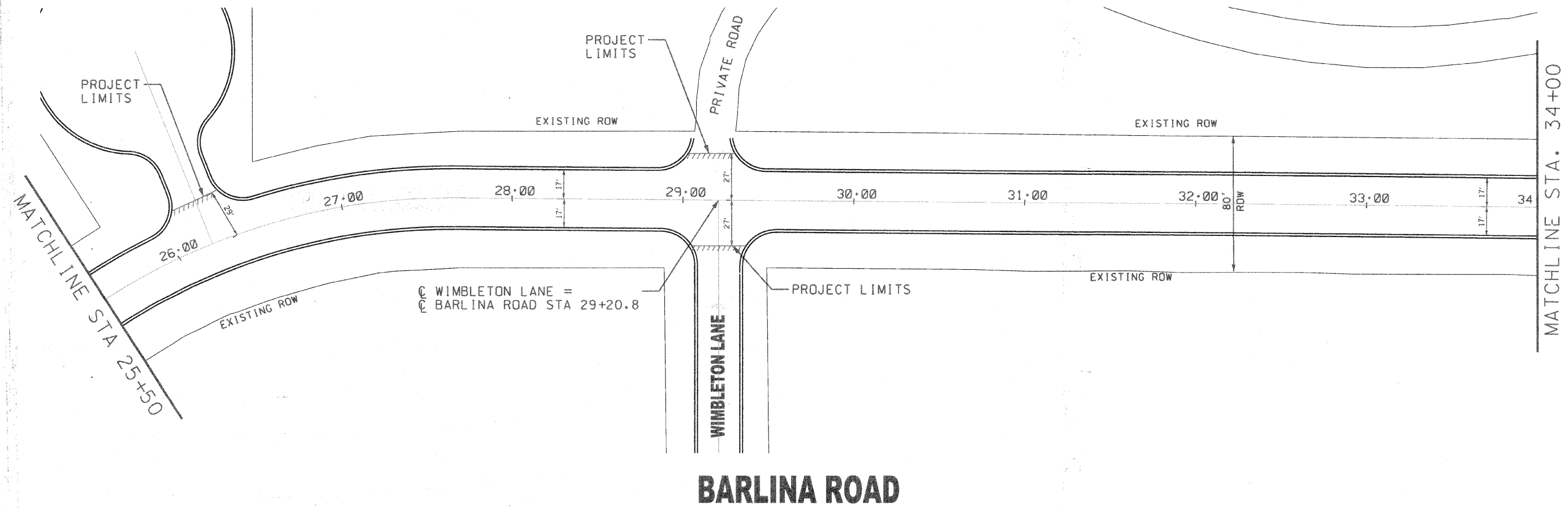


NOTES:

1. COMBINATION CONCRETE CURB AND GUTTER REMOVAL TO BE DETERMINED BY THE RESIDENT ENGINEER IN THE FIELD.
2. PAVEMENT PATCHING LIMITS TO BE DETERMINED BY THE RESIDENT ENGINEER IN THE FIELD.
3. THE EXACT THERMOPLASTIC PAVEMENT MARKING LOCATIONS WILL BE DETERMINED IN THE FIELD BY THE ENGINEER. ALL THERMOPLASTIC PAVEMENT MARKINGS MUST FOLLOW THE IDOT DETAIL AND HIGHWAY STANDARDS. THE THERMOPLASTIC PAVEMENT MARKINGS WILL BE REPLACED INKIND.



FILE NAME BARLINA.SHEET4.DGN	DESIGNED	SCC	REVISED	2-25-2009	<b>STATE OF ILLINOIS DEPARTMENT OF TRANSPORTATION</b>	<b>City of Crystal Lake, Illinois STP (LAPP) IMPROVEMENTS</b>	<b>Location No. 3: BARLINA ROAD</b>	F.A. RTE.	SECTION	COUNTY	TOTAL SHEETS	SHEET NO.
	DRAWN	JAM	REVISED					3871	08-00110-00-RS	MCHENRY	43	31
	CHECKED	EDM	REVISED					CONTRACT NO. 63139				
	PLOT DATE	11-26-08	DATE	11-26-2008				SCALE: 1"=30'	SHEET NO. 4 OF 5 SHEETS	STA. 25+50 TO STA. 34+00	FED. ROAD DIST. NO. 1	ILLINOIS FED. AID PROJECT