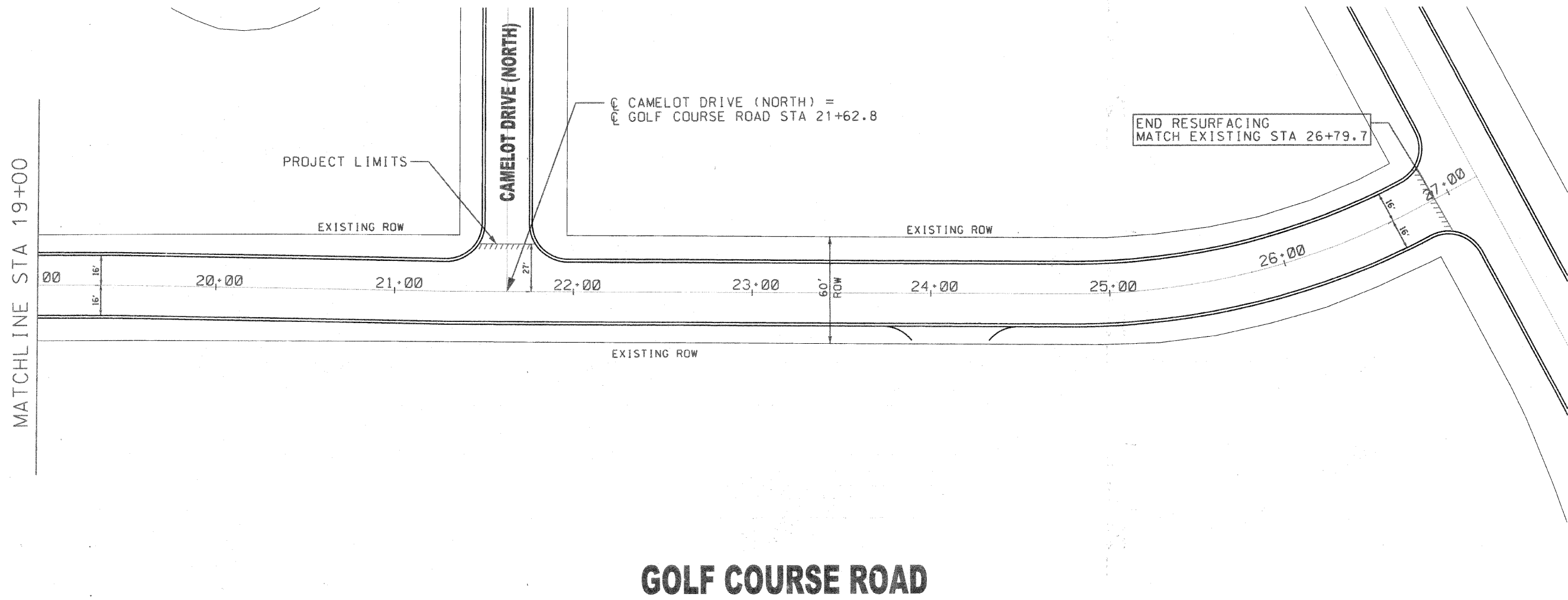


NOTES:

1. COMBINATION CONCRETE CURB AND GUTTER REMOVAL TO BE DETERMINED BY THE RESIDENT ENGINEER IN THE FIELD.
2. PAVEMENT PATCHING LIMITS TO BE DETERMINED BY THE RESIDENT ENGINEER IN THE FIELD.
3. THE EXACT THERMOPLASTIC PAVEMENT MARKING LOCATIONS WILL BE DETERMINED IN THE FIELD BY THE ENGINEER. ALL THERMOPLASTIC PAVEMENT MARKINGS MUST FOLLOW THE IDOT DETAIL AND HIGHWAY STANDARDS. THE THERMOPLASTIC PAVEMENT MARKINGS WILL BE REPLACED INKIND.



GOLF COURSE ROAD

FILE NAME = GOLF COURSE.SHEET3.DGN	DESIGNED <i>SCC</i>	REVISED <i>2-25-2009</i>	STATE OF ILLINOIS DEPARTMENT OF TRANSPORTATION	City of Crystal Lake, Illinois STP (LAPP) IMPROVEMENTS	Location No. 3: GOLF COURSE ROAD	F.A. RTE.	SECTION	COUNTY	TOTAL SHEETS	SHEET NO.
	DRAWN <i>JAM</i>	REVISED				3872	08-00110-00-RS	MCHENRY	43	35
PLOT SCALE = 60 (plot to 11x17)	CHECKED <i>EDM</i>	REVISED	SCALE: 1"=30'			SHEET NO. 3 OF 3 SHEETS		STA. 19+00 TO STA. 26+79.7		FED. ROAD DIST. NO. 1 ILLINOIS FED. AID PROJECT
PLOT DATE = 11-26-08	DATE <i>11-26-2008</i>	REVISED	CONTRACT NO. 63139							