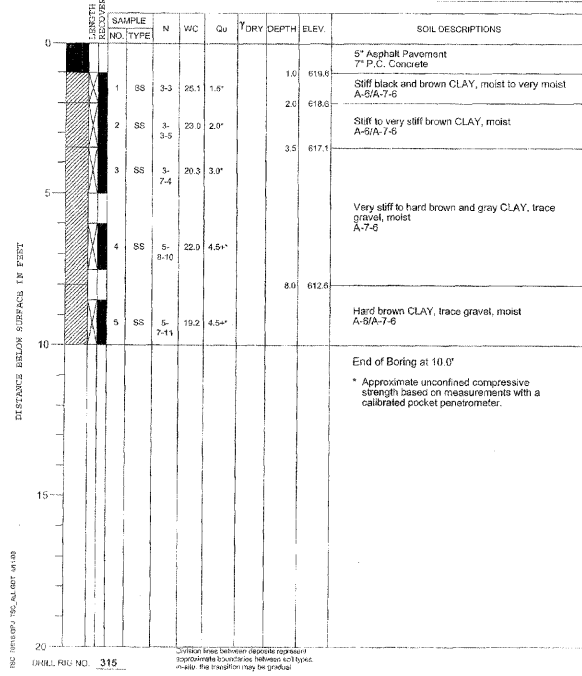
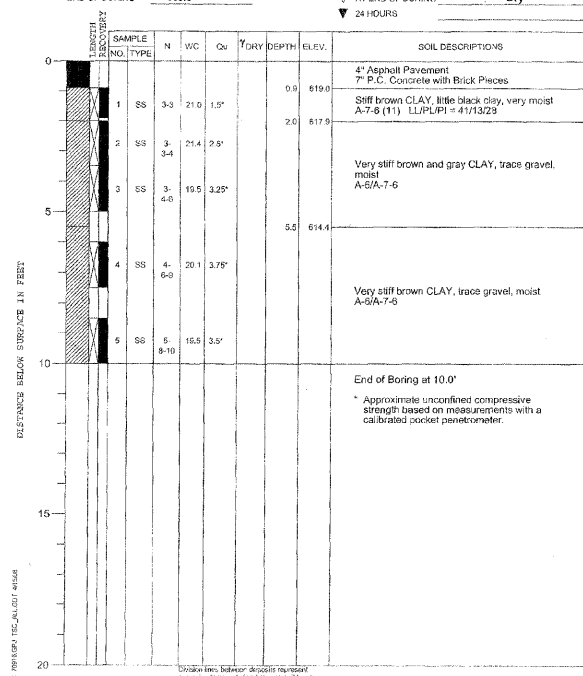


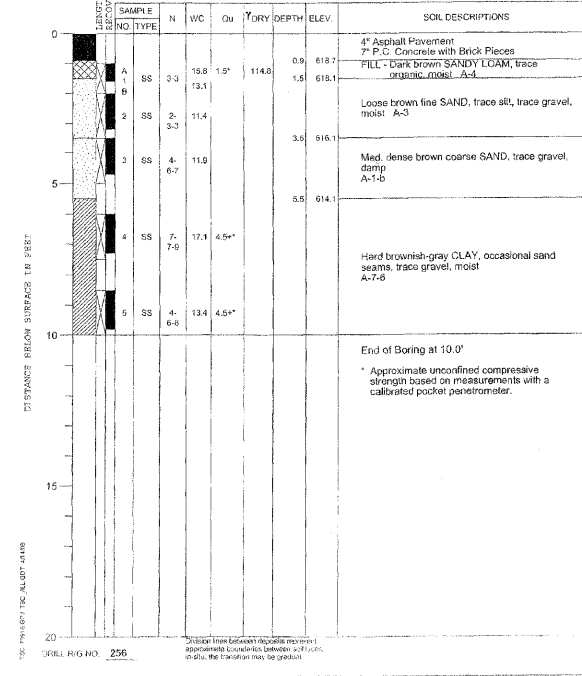
PROJECT Harvard Street Improvements, Des Plaines Ave. & Harlem Ave., Forest Park, IL  
 CLIENT Christopher B. Burke Engineering Ltd., Rosemont, Illinois  
 BORING 9 DATE STARTED 3-25-08 DATE COMPLETED 3-25-08 JOB L-70,916  
 ELEVATIONS  
 GROUND SURFACE 626.6  
 END OF BORING 610.6  
 WHILE DRILLING Dry  
 AT END OF BORING Dry  
 24 HOURS



PROJECT Harvard Street Improvements, Des Plaines Ave. & Harlem Ave., Forest Park, IL  
 CLIENT Christopher B. Burke Engineering Ltd., Rosemont, Illinois  
 BORING 10 DATE STARTED 3-25-08 DATE COMPLETED 3-25-08 JOB L-70,916  
 ELEVATIONS  
 GROUND SURFACE 619.9  
 END OF BORING 609.9  
 WHILE DRILLING Dry  
 AT END OF BORING Dry  
 24 HOURS



PROJECT Harvard Street Improvements, Des Plaines Ave. & Harlem Ave., Forest Park, IL  
 CLIENT Christopher B. Burke Engineering Ltd., Rosemont, Illinois  
 BORING 11 DATE STARTED 3-25-08 DATE COMPLETED 3-25-08 JOB L-70,916  
 ELEVATIONS  
 GROUND SURFACE 619.6  
 END OF BORING 609.6  
 WHILE DRILLING Dry  
 AT END OF BORING Dry  
 24 HOURS



PROJECT Harvard Street Improvements, Des Plaines Ave. & Harlem Ave., Forest Park, IL  
 CLIENT Christopher B. Burke Engineering Ltd., Rosemont, Illinois  
 BORING 12 DATE STARTED 3-25-08 DATE COMPLETED 3-25-08 JOB L-70,916  
 ELEVATIONS  
 GROUND SURFACE 619.1  
 END OF BORING 609.1  
 WHILE DRILLING Dry  
 AT END OF BORING Dry  
 24 HOURS

