

PROJECT ENGINEER: BOB WAGNER

SQUAD LEADER: CHAD SPREEMAN (815)-284-5934

|                     |          |                    |              |           |
|---------------------|----------|--------------------|--------------|-----------|
| F.A.P. RTE.         | SECTION  | COUNTY             | TOTAL SHEETS | SHEET NO. |
| *642                | (10,11)T | JO DAVIESS         | *283         | 1         |
| FED. ROAD DIST. NO. | ILLINOIS | CONTRACT NO. 64D07 |              |           |
| *IL RTE 78          |          |                    | *283+1=      | 284       |

STATE OF ILLINOIS  
DEPARTMENT OF TRANSPORTATION  
DIVISION OF HIGHWAYS

**PROPOSED  
HIGHWAY PLANS**

FAP ROUTE 642 (IL 78)  
SECTION (10,11)T  
PROJECT F-0642(047)  
JO DAVIESS COUNTY  
C-92-093-07

FOR INDEX OF SHEETS, SEE SHEET NO. 2  
FOR STATE STANDARDS, SEE SHEET NO. 2

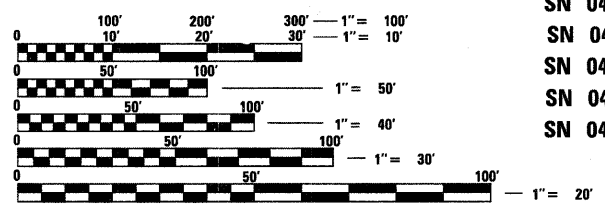
D-92-047-07



PLEASANT VALLEY TOWNSHIP - SECTIONS: 3, 9, 10, 15, 16, 22, & 35  
STOCKTON TOWNSHIP - SECTIONS: 23, 26, & 35

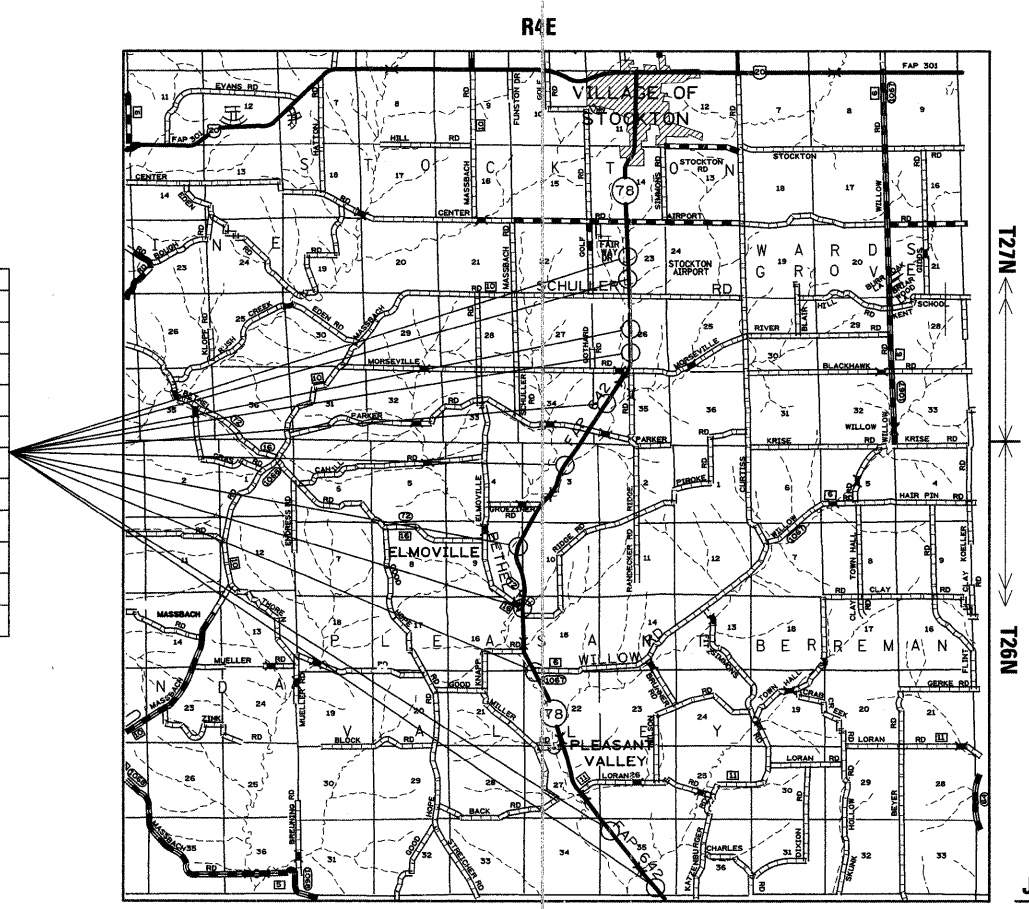
**PROJECT LOCATIONS:**

|             |   |                 |
|-------------|---|-----------------|
| SN 043-1062 | - | STA 4 + 86.61   |
| SN 043-1063 | - | STA 182 + 98.97 |
| SN 043-1064 | - | STA 278 + 24.12 |
| SN 043-1065 | - | STA 348 + 33.81 |
| SN 043-1066 | - | STA 404 + 70.72 |
| SN 043-1067 | - | STA 435 + 71.80 |
| SN 043-1068 | - | STA 448 + 28.40 |
| SN 043-1069 | - | STA 484 + 22.22 |
| SN 043-1070 | - | STA 501 + 14.74 |
| SN 043-1078 | - | STA 230 + 39.00 |
| SN 043-1079 | - | STA 336 + 17.63 |
| SN 043-1082 | - | STA 54 + 49.03  |



FULL SIZE PLANS HAVE BEEN PREPARED USING STANDARD ENGINEERING SCALES. REDUCED SIZED PLANS WILL NOT CONFORM TO STANDARD SCALES. IN MAKING MEASUREMENTS ON REDUCED PLANS, THE ABOVE SCALES MAY BE USED.

J.U.L.I.E.  
JOINT UTILITY LOCATION INFORMATION FOR EXCAVATION  
1-800-892-0123  
OR 811



T27N  
T26N

JO DAVIESS COUNTY  
CARROLL COUNTY

STATE OF ILLINOIS  
DEPARTMENT OF TRANSPORTATION  
DIVISION OF HIGHWAYS

SUBMITTED October 7, 20 08  
Gregory F. Ryan  
DEPUTY DIRECTOR OF HIGHWAYS, REGION ENGINEER

December 5, 20 08  
Eric E. Horn  
INTERIM ENGINEER OF DESIGN AND ENVIRONMENT

December 5, 20 08  
Christine M. Reed  
DIRECTOR OF HIGHWAYS, CHIEF ENGINEER

**PRINTED BY THE AUTHORITY  
OF THE STATE OF ILLINOIS**

CONTRACT NO. 64D07

NET LENGTH OF PROJECT = 9,593 LIN. FT = 1.82 MILE  
GROSS LENGTH OF PROJECT = 50,221 LIN. FT = 9.51 MILES