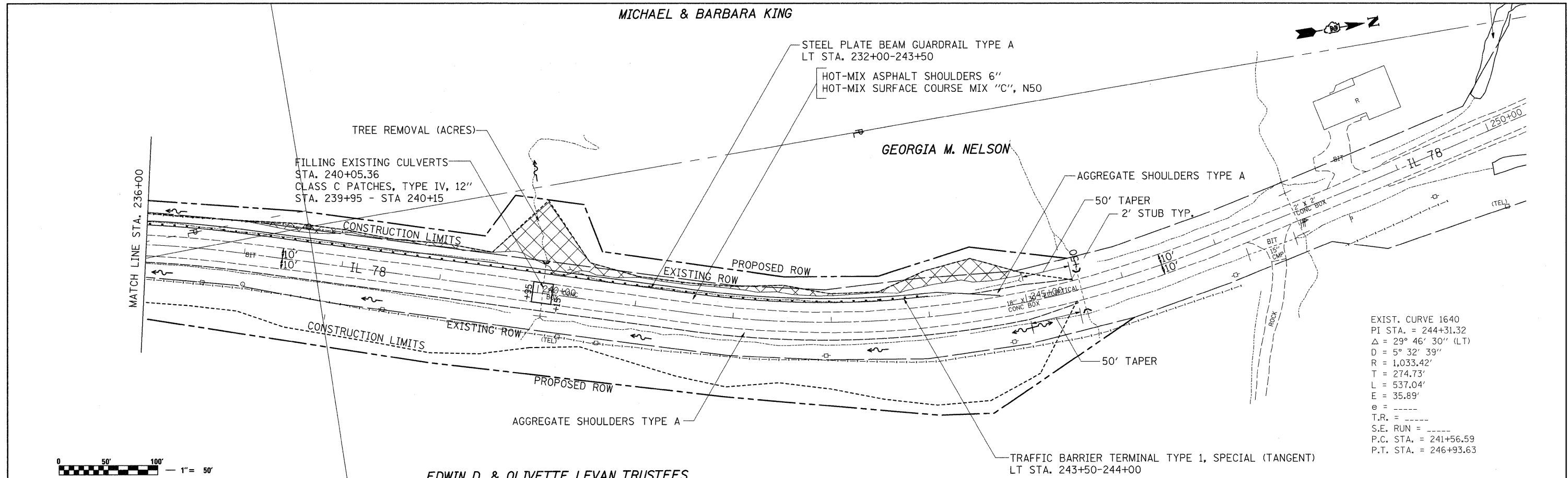


MICHAEL & BARBARA KING

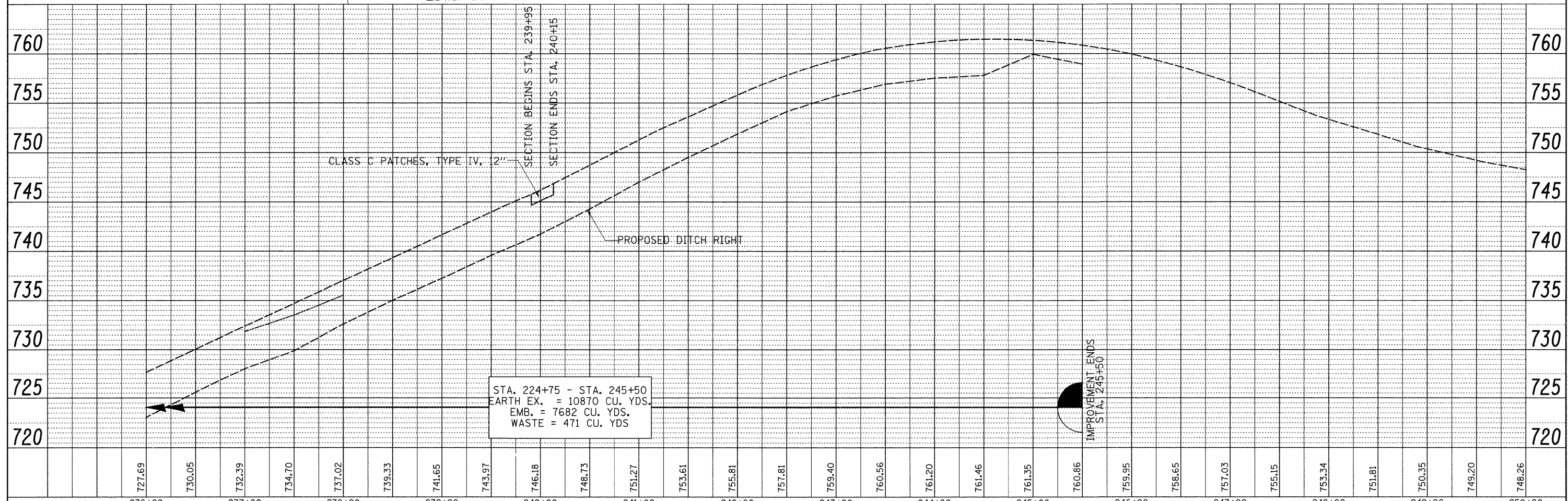
PLAN	SURVEYED	DATE
	PLOTTED	
	NOTED	
	CHECKED	
	BY	
	NO.	
	FILE NAME	

PROFILE	SURVEYED	DATE
	PLOTTED	
	NOTED	
	CHECKED	
	BY	
	NO.	
	FILE NAME	



EXIST. CURVE 1640
 PI STA. = 244+31.32
 Δ = 29° 46' 30" (LT)
 D = 5° 32' 39"
 R = 1,033.42'
 T = 274.73'
 L = 537.04'
 E = 35.89'
 e = -----
 T.R. = -----
 S.E. RUN = -----
 P.C. STA. = 241+56.59
 P.T. STA. = 246+93.63

EDWIN D. & OLIVETTE LEVAN TRUSTEES



STA. 224+75 - STA. 245+50
 EARTH EX. = 10870 CU. YDS.
 EMB. = 7682 CU. YDS.
 WASTE = 471 CU. YDS

FILE NAME =	USER NAME = hensonke	DESIGNED -	REVISED -	STATE OF ILLINOIS DEPARTMENT OF TRANSPORTATION	IL 78 PLAN & PROFILE			F.A.P. RTE.	SECTION	COUNTY	TOTAL SHEETS	SHEET NO.
ca:\pw\work\PI\IDOT\HENSONKE\dms33697\d04777\pln.dgn	7/21/08	DRAWN -	REVISED -					642	(10-11)T	JODAVIESS	283	48
PLOT SCALE = 50.0000' / IN.		CHECKED -	REVISED -					CONTRACT NO. 64D07				
PLOT DATE = Tue Sep 30 14:08:21 2008		DATE -	REVISED -					FED. ROAD DIST. NO. [ILLINOIS] FED. AID PROJECT				