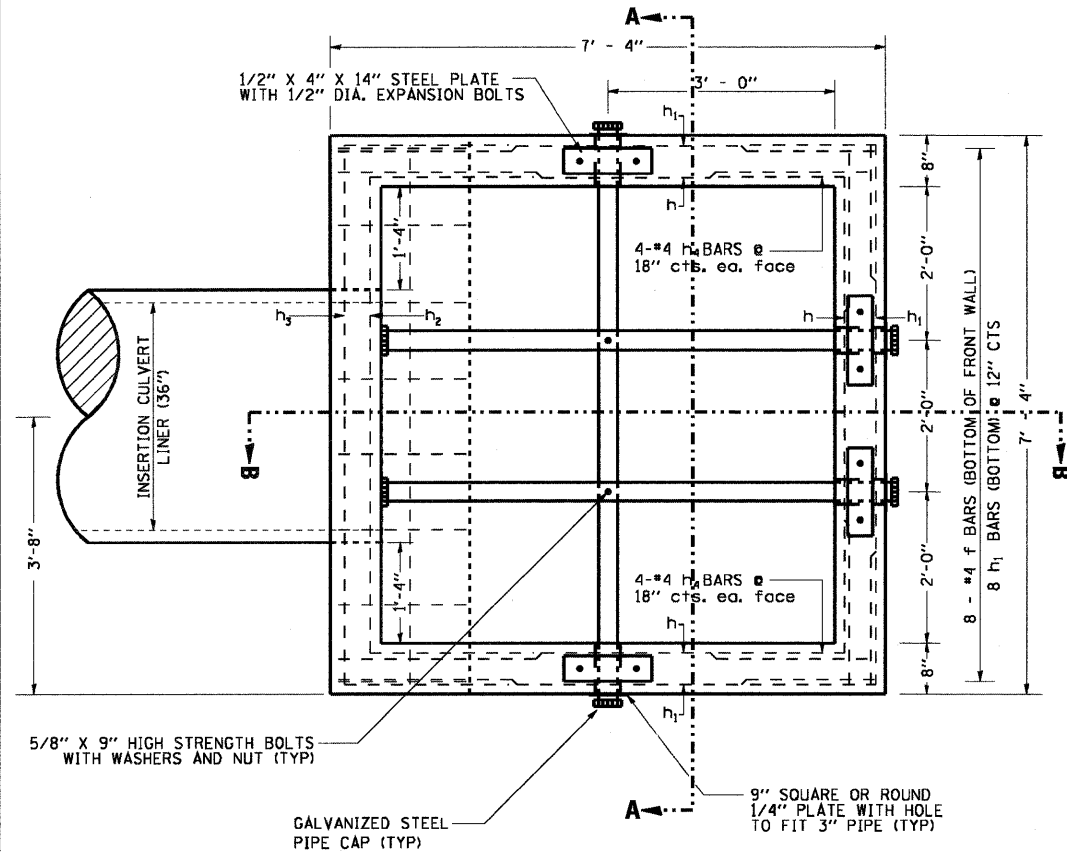


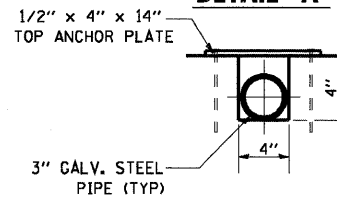
# DROP BOX NO. 3

## RT STA. 435 + 71.80

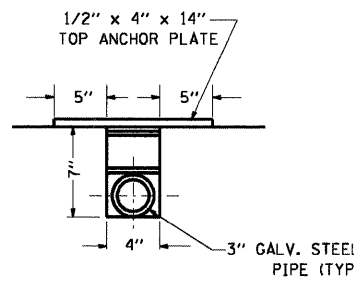
### PLAN



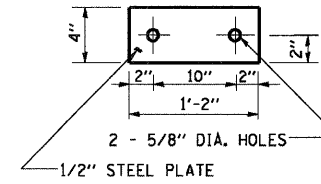
### DETAIL "A"



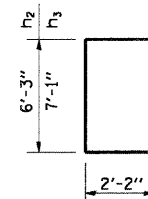
### DETAIL "B"



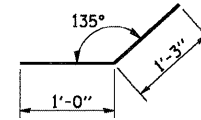
### TOP ANCHOR PLATE



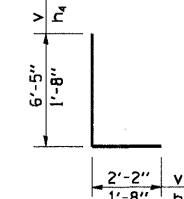
### #5 h2 & h3 BARS



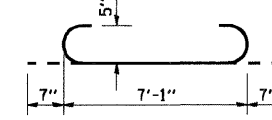
### #4 f BAR



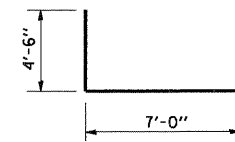
### #5 v BAR & #4 h1 BAR



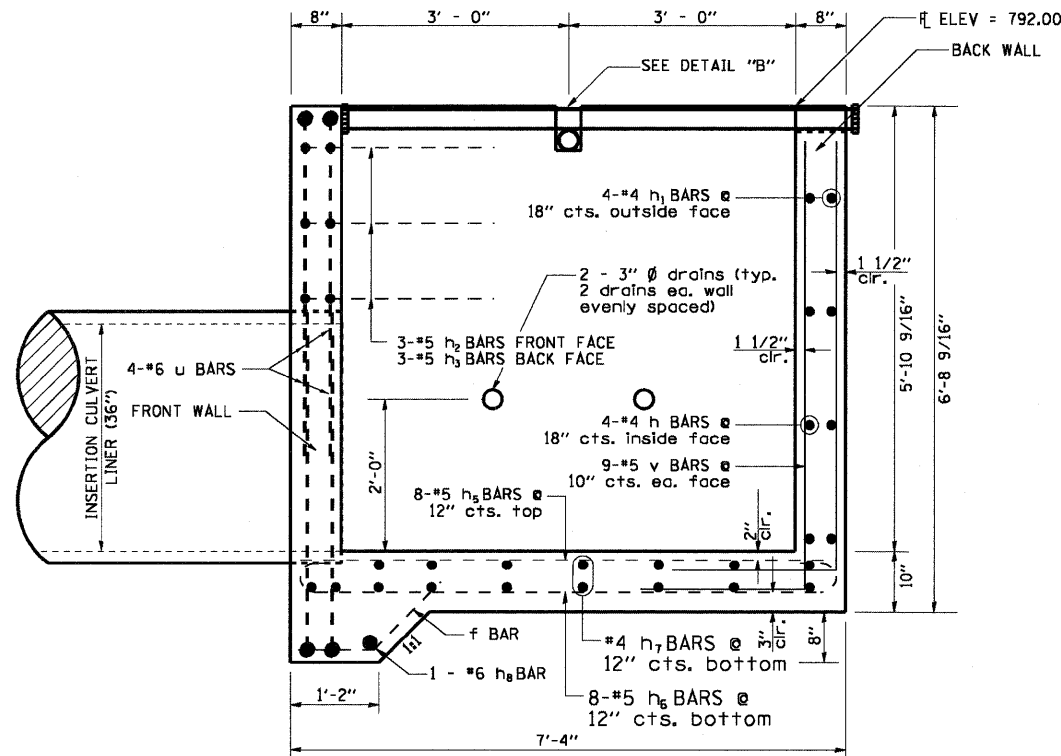
### #5 h2 BAR



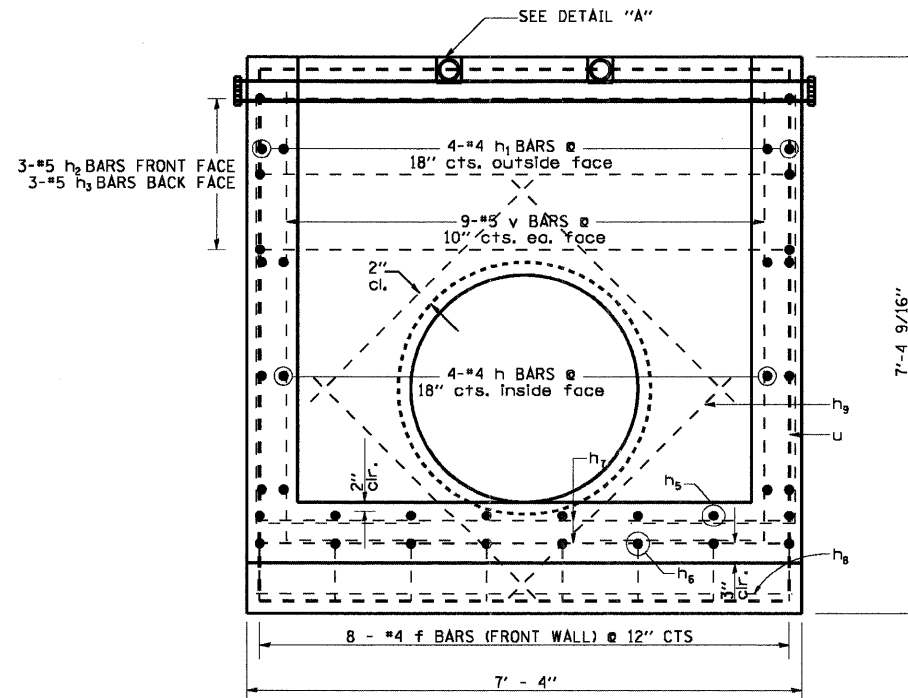
### #6 u BAR



### SECTION B-B



### SECTION A-A



### BILL OF MATERIALS

(FOR INFORMATION ONLY)

BAR	NO.	SIZE	LENGTH	SHAPE
f	8	#4	2'-3"	
h	12	#4	7'-1"	
h1	12	#4	7'-1"	
h2	3	#5	8'-5"	
h3	3	#5	9'-3"	
h4	16	#4	3'-4"	
h5	8	#5	7'-1"	
h6	8	#5	8'-3"	
h7	16	#4	7'-1"	
h8	1	#6	7'-1"	
h9	4	#4	4'-2"	
u	4	#6	16'-0"	
v	52	#5	8'-7"	
DESCRIPTION		UNIT	QUANTITY	
CLASS "SI" CONCRETE		CU YD	5.6	
REINFORCEMENT BARS		LB	1000	

### BILL OF MATERIALS

(FOR INFORMATION ONLY)

DESCRIPTION	UNIT	QTY.
3" GALVANIZED STEEL PIPE	FOOT	2 @ 6'-10"
3" GALV PIPE CAPS	EACH	4
1/4" GALV. STEEL PLATE (9" NOMINAL)	EACH	4
1/2" x 4" x 14" GALV. STEEL PLATE	EACH	4
5/8" x 9" GALV. STEEL BOLTS	EACH	2
EXPANSION BOLTS 1/2"Ø	EACH	8

### GENERAL NOTES:

THIS WORK SHALL BE PAID FOR AT THE CONTRACT UNIT PRICE PER "EACH" FOR DROP BOX NO. 3. THIS WORK SHALL INCLUDE THE GALVANIZED PIPE, ANCHOR PLATES, & CAPS, CLASS SI CONCRETE, REINFORCEMENT BARS, BOLTS, NUTS, WASHERS, INSTALLATION ON THE PROPOSED CULVERT, PIPE GRATING, EARTH EXCAVATION AND DIVERTING WATER WHERE REQUIRED, AND ANY NECESSARY GRADING TO FIT THE DROP BOX, AS SHOWN IN THE CROSS SECTIONS OR TO SLOPE.

CLASS SI CONCRETE SHALL BE USED THROUGHOUT. EXPOSED EDGES SHALL BE BEVELED 3/4"

SLOPE FLOW LINE FOR DROP BOX NO. 3 IS THE SAME RATE AS THE FLOW LINE OF THE PIPE.

BOLTS, NUTS, AND WASHERS SHALL BE IN ACCORDANCE WITH ARTICLE 1006.08 OF THE STANDARD SPECIFICATION AND SHALL BE GALVANIZED.

STEEL PIPES SHALL CONFORM TO A.S.T.M. A-53 (TYPE E OR S) GRADE B, SCHEDULE 40, AND SHALL BE GALVANIZED CONFORMING TO A.S.T.M. A-120. CONTRACTOR SHALL FIELD VERIFY PIPE LENGTH.

STEEL PLATES SHALL CONFORM TO AASHTO M-183 AND SHALL BE GALVANIZED CONFORMING TO AASHTO M-111.

REINFORCEMENT BARS SHALL CONFORM TO THE REQUIREMENTS OF ASTM A706 GR. 60 (IL MODIFIED).

THE CONTRACTOR SHALL BE RESPONSIBLE FOR DIVERTING THE WATER FLOW FROM THE CONSTRUCTION AREA USING A METHOD MEETING THE APPROVAL OF THE ENGINEER. THIS WORK SHALL BE IN ACCORDANCE WITH ARTICLE 503 OF THE STANDARD SPECIFICATION. COST INCLUDED WITH "DROP BOX NO. 3."

DRAIN HOLES SHALL BE CONSTRUCTED IN ACCORDANCE WITH SECTION 503.11.

SEE PLAN AND PROFILE SHEET FOR MORE INFORMATION.

SEE CROSS SECTION SHEET FOR MORE INFORMATION INCLUDING INVERT ELEVATIONS.

INSERTION CULVERT LINER (36") SHALL BE FURNISHED AND INSTALLED IN ACCORDANCE WITH SECTION 543. RPM-D3262, PROFILE WALL-F894, OR PVC SHALL BE UTILIZED.

FILE NAME =	USER NAME = #USER#	DESIGNED -	REVISED -	<b>STATE OF ILLINOIS DEPARTMENT OF TRANSPORTATION</b>	<b>DROP BOX NO. 3</b>	F.A.P. RTE.	SECTION	COUNTY	TOTAL SHEETS	SHEET NO.
	PLOT SCALE = 1:50	DRAWN -	REVISED -			642	(10, 11)T	JODAVIESS	283	97
	PLOT DATE = #DATE#	CHECKED -	REVISED -			CONTRACT NO. 64007				
		DATE -	REVISED -			FED. ROAD DIST. NO. [ILLINOIS] FED. AID PROJECT				
SCALE:						SHEET NO.	OF	SHEETS	STA.	TO STA.