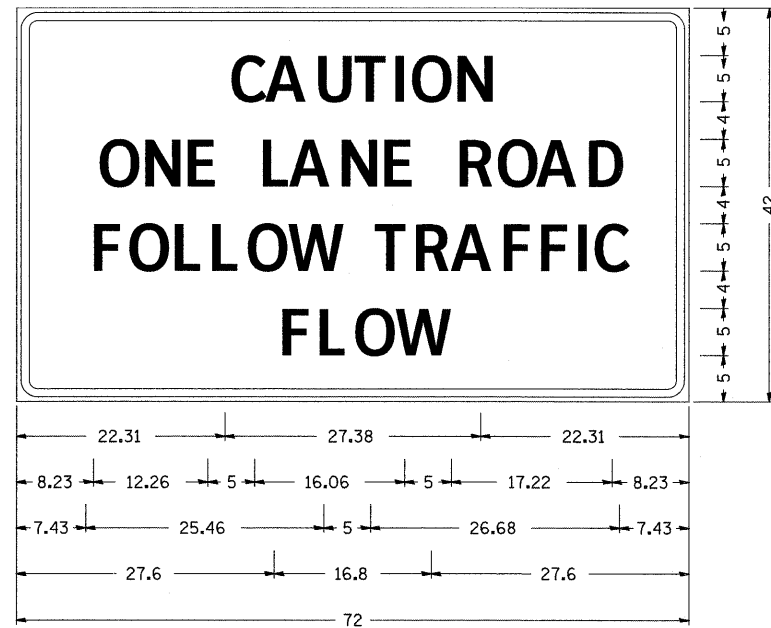


ENTRANCE SIGN FOR USE WITH TEMPORARY SIGNALS



Type AA Fluorescent Orange Sheeting ;
 2.25" Radius, 0.88" Border, 0.50" Indent, Black on Orange;
 [CAUTION] D; [ONE LANE ROAD] D;
 [FOLLOW TRAFFIC] D; [FLOW] D

Table Of Widths And Spaces

| | | | | | | | | | | | | | | | | | | | | | |
|-------|---|------|---|------|------|------|---|------|------|---|------|-------|---|------|------|---|------|------|---|------|-------|
| 22.31 | C | 3.36 | A | 0.62 | 4.18 | 0.94 | U | 3.36 | 0.94 | T | 3.04 | 0.94 | I | 0.78 | 1.17 | O | 3.52 | 1.17 | N | 3.36 | 22.31 |
| 8.23 | O | 3.51 | N | 1.17 | 3.36 | 1.18 | E | 3.04 | | | | | | | | | | | | | |
| | L | 3.05 | A | 0.31 | 4.18 | 0.94 | N | 3.36 | 1.17 | E | 3.05 | | | | | | | | | | |
| | R | 3.36 | O | 0.93 | 3.52 | 0.94 | A | 4.18 | 0.93 | D | 3.36 | 8.23 | | | | | | | | | |
| 7.43 | F | 3.04 | O | 0.94 | 3.52 | 1.17 | L | 3.04 | 0.94 | L | 3.05 | 0.94 | O | 3.51 | 0.94 | W | 4.37 | | | | |
| | T | 3.05 | R | 0.94 | 3.36 | 0.94 | A | 4.18 | 0.93 | F | 3.05 | 0.94 | F | 3.04 | 0.94 | I | 0.78 | 1.18 | C | 3.35 | 7.43 |
| 27.60 | F | 3.05 | L | 0.94 | 3.04 | 0.94 | O | 3.52 | 0.93 | W | 4.38 | 27.60 | | | | | | | | | |

GENERAL NOTES

THIS SIGN SHALL BE INSTALLED AT ENTRANCES LOCATED BETWEEN THE TEMPORARY SIGNALS AS DIRECTED BY THE ENGINEER.

ALL DIMENSIONS ARE IN INCHES UNLESS OTHERWISE NOTED.

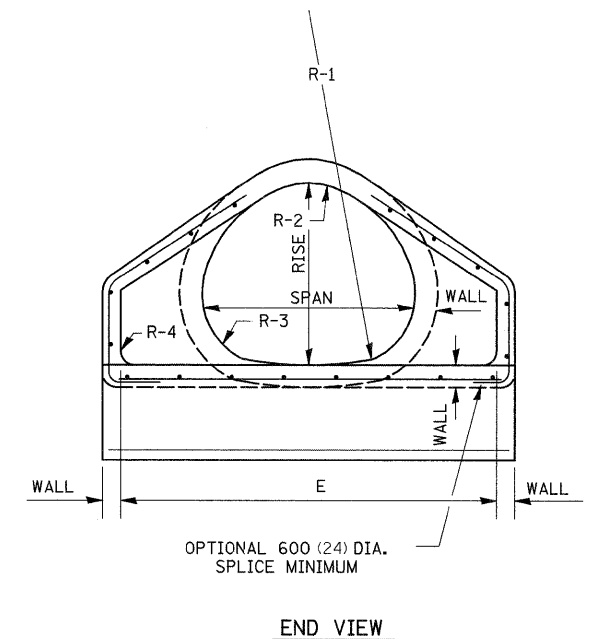
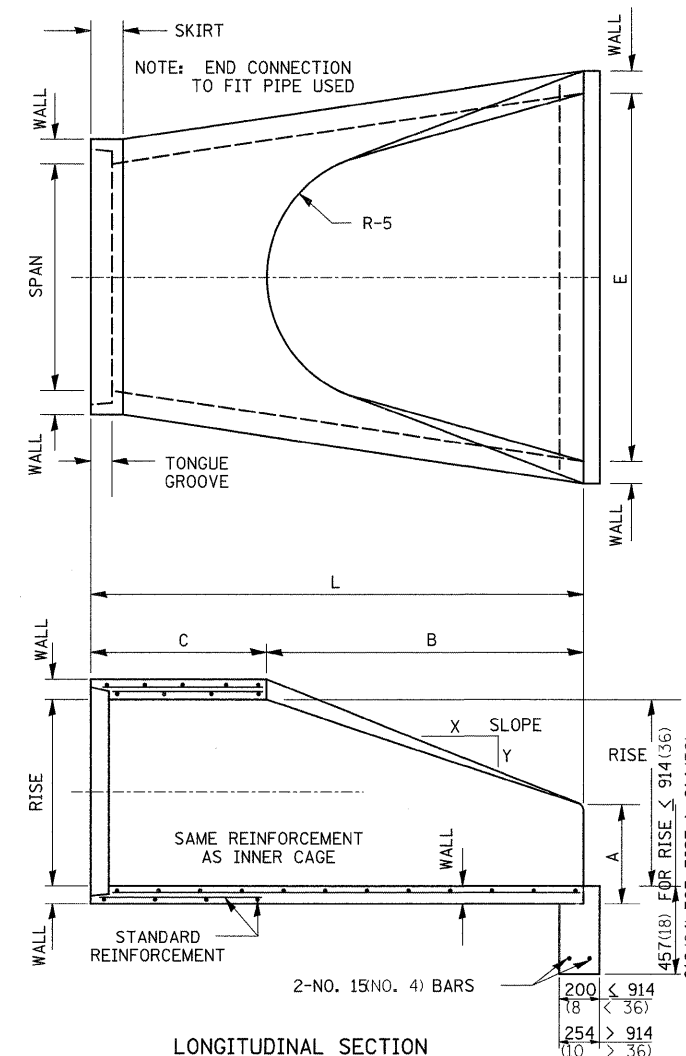
THE COST TO FURNISH, INSTALL AND REMOVE THIS SIGN AT THE REQUIRED LOCATIONS SHALL BE INCLUDED IN THE COST OF TRAFFIC CONTROL AND PROTECTION STANDARD 701321.

ALL DIMENSIONS ARE IN MILLIMETERS (INCHES) UNLESS OTHERWISE NOTED.

REVISED - 10-28-05

PRECAST REINFORCED CONCRETE ARCH DIAMETER FLARED END SECTION

| SIZE | WALL | SPAN | RISE | L | B | C | E | A | SLOPE | R-1 | R-2 | R-3 | R-4 | R-5 |
|-----------|-------------|---------------|--------------|------------|-----------|-----------|------------|--------------|--------|---------------|--------------|--------------|---------|----------|
| 450 (18) | 64 (2 1/2) | 559 (22) | 343 (13 1/2) | 1829 (72) | 686 (27) | 1143 (45) | 914 (36) | 178 (7) | 1:2.16 | 699 (27 1/2) | 349 (13 3/4) | 133 (5 1/4) | 51 (2) | 305 (12) |
| 600 (24) | 76 (3) | 724 (28 1/2) | 457 (18) | 1829 (72) | 991 (39) | 838 (33) | 1219 (48) | 203 (8) | 1:2.29 | 1033 (40 1/8) | 370 (14 5/8) | 117 (4 5/8) | 76 (3) | 356 (14) |
| 750 (30) | 89 (3 1/2) | 921 (36 1/4) | 572 (22 1/2) | 1829 (72) | 1219 (48) | 610 (24) | 1524 (60) | 254 (10) | 1:2.34 | 1295 (51) | 476 (18 3/4) | 156 (6 1/8) | 76 (3) | 381 (15) |
| 900 (36) | 102 (4) | 1111 (43 3/4) | 676 (26 5/8) | 2438 (96) | 1524 (60) | 914 (36) | 1828 (72) | 270 (10 5/8) | 1:2.4 | 1575 (62) | 572 (22 1/2) | 165 (6 1/2) | 152 (6) | 508 (20) |
| 1050 (42) | 114 (4 1/2) | 1308 (51 1/8) | 795 (31 1/8) | 2438 (96) | 1524 (60) | 914 (36) | 1981 (78) | 402 (15 3/8) | 1:2.35 | 1854 (73) | 667 (26 1/4) | 197 (7 3/4) | 152 (6) | 559 (22) |
| 1200 (48) | 127 (5) | 1485 (58 1/2) | 914 (36) | 2438 (96) | 1524 (60) | 914 (36) | 2134 (84) | 533 (21) | 1:2.31 | 2134 (84) | 762 (30) | 225 (8 7/8) | 152 (6) | 559 (22) |
| 1350 (54) | 140 (5 1/2) | 1651 (65) | 1016 (40) | 2438 (96) | 1524 (60) | 914 (36) | 2286 (90) | 648 (25 1/2) | 1:2.26 | 2350 (92 1/2) | 848 (33 3/8) | 254 (10) | 152 (6) | 610 (24) |
| 1500 (60) | 152 (6) | 1854 (73) | 1143 (45) | 2438 (96) | 1905 (75) | 533 (21) | 2438 (96) | 660 (26) | 1:2.34 | 2667 (105) | 953 (37 1/2) | 281 (11 1/8) | 152 (6) | 533 (21) |
| 1800 (72) | 178 (7) | 2235 (88) | 1371 (54) | 2540 (100) | 1981 (78) | 559 (22) | 3048 (120) | 889 (35) | 1:2.29 | 3200 (126) | 1143 (45) | 338 (13 3/8) | 152 (6) | 610 (24) |



NOTES:

PRECAST CONCRETE FLARED END SECTIONS SHALL CONFORM TO THE APPLICABLE REQUIREMENT OF AASHTO M-206.

PRECAST CONCRETE FLARED END SECTION FOR PIPE ARCH DIAMETER REQUIRED SHALL BE AS INDICATED ON DETAIL PLAN FOR EACH INDIVIDUAL INSTALLATION.

THE END BLOCK SHALL BE PLACED PRIOR TO THE INSTALLATION OF THE FLARED END SECTION. THE END BLOCK SHALL BE BACKFILLED IN ACCORDANCE WITH ART. 502.10 (502.11) OF THE STANDARD SPECIFICATIONS, COST INCLUDED TO END SECTION.

ALL DIMENSIONS ARE IN MILLIMETERS (INCHES) UNLESS OTHERWISE NOTED.

| | | | | | | |
|-------------------|---|--------------------|------------------|---|------------------|---------------|
| REVISED - 1-09-08 | REGION 2 / DISTRICT 2 STANDARD | F.A.P. RTE. 642 | SECTION (10,11)T | COUNTY JO DAVIESS | TOTAL SHEETS 283 | SHEET NO. 116 |
| REVISED - | SCALE: 50:0000' / 1" SHEET NO. OF SHEETS STA. TO STA. | CONTRACT NO. 64D07 | | FED. ROAD DIST. NO. ILLINOIS FED. AID PROJECT | | |