

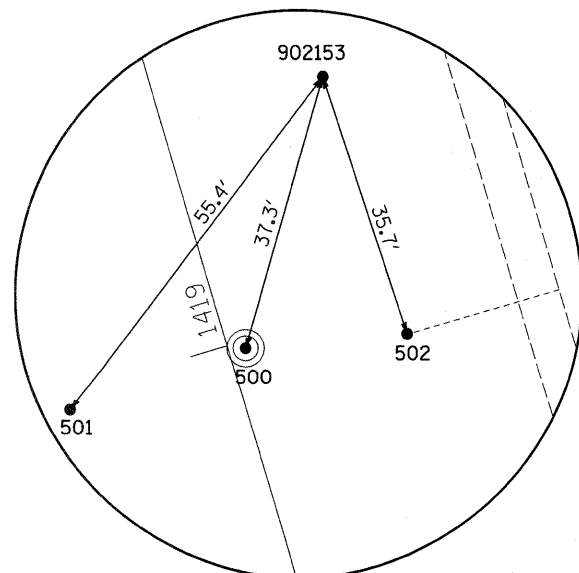
SURVEY WORK POINTS

POINT	NORTH	EAST	ELEVATION	CHAIN	STATION	OFFSET	CHAIN	STATION	OFFSET	DESCRIPTION
100	1912186.9799	2607889.4086	803.0214	I39_D2	1431+33.2051	86.8813' RT	RAMP	49+18.0485	0.0009' RT	GROUND SHOT
101	1912236.6474	2607879.0613	802.6804	I39_D2	1431+84.2895	85.9223' RT	RAMP	49+68.7820	0.2385' RT	GROUND SHOT
102	1912274.8785	2607870.9492	802.3763	I39_D2	1432+23.6319	84.8955' RT	RAMP	50+07.8646	0.2147' RT	GROUND SHOT
103	1912308.6469	2607863.7608	802.0336	I39_D2	1432+58.3803	83.8616' RT	RAMP	50+42.3897	0.1257' RT	GROUND SHOT
104	1912352.0423	2607855.0097	801.6940	I39_D2	1433+02.9407	82.8687' RT	RAMP	50+86.6581	0.4254' RT	PAVEMENT - EDGE
105	1912378.4750	2607849.4849	801.4363	I39_D2	1433+30.1129	81.9937' RT	RAMP	51+13.6624	0.3833' RT	PAVEMENT - EDGE
106	1912423.5545	2607840.4024	801.1196	I39_D2	1433+76.3866	80.6986' RT	RAMP	51+59.6481	0.5844' RT	PAVEMENT - EDGE
107	1912461.6003	2607832.6470	800.9517	I39_D2	1434+15.4472	79.382' RT	RAMP	51+98.4771	0.6073' RT	PAVEMENT - EDGE
108	1912495.7414	2607825.6807	800.8256	I39_D2	1434+50.4925	78.0886' RT	RAMP	52+33.3224	0.5754' RT	PAVEMENT - EDGE
109	1912575.5216	2607809.5835	800.5369	I39_D2	1435+32.3262	74.8583' RT	RAMP	53+14.7120	0.5102' RT	PAVEMENT - EDGE
110	1912574.0751	2607803.4843	800.7181	I39_D2	1435+31.8425	68.6084' RT	RAMP	53+14.4863	5.7542' LT	PAVEMENT EDGE RIGHT, BEGINNING

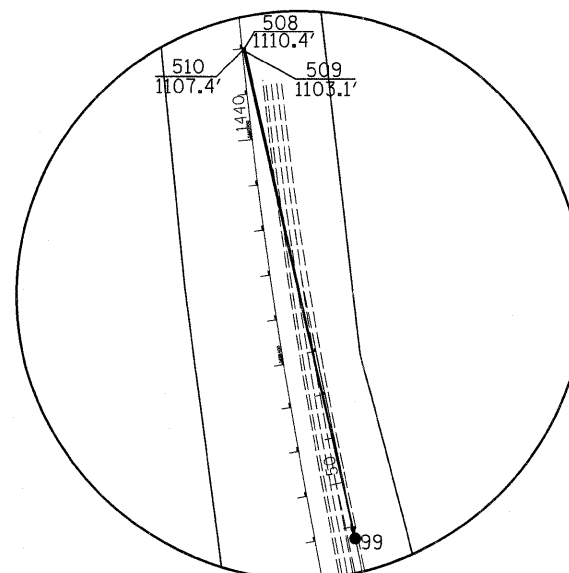
POINT	NORTH	EAST	ELEVATION	CHAIN	STATION	OFFSET	DESCRIPTION
111	1912624.9237	2607795.3597	800.5200	I39_D2	1435+83.6245	68.3794' RT	PAVEMENT EDGE RIGHT
112	1912626.6911	2607799.0933	800.4267	I39_D2	1435+84.8137	72.3373' RT	PAVEMENT - EDGE
113	1912676.6197	2607789.0715	800.3607	I39_D2	1436+35.9749	69.8743' RT	PAVEMENT - EDGE
114	1912676.5723	2607787.4931	800.3701	I39_D2	1436+36.1612	68.3061' RT	PAVEMENT EDGE RIGHT
115	1912697.3450	2607784.4571	800.3093	I39_D2	1436+57.2721	68.3401' RT	PAVEMENT EDGE RIGHT
116	1912697.4607	2607784.7377	800.3462	I39_D2	1436+57.3461	68.6345' RT	PAVEMENT - EDGE
117	1912731.5386	2607779.4764	800.2618	I39_D2	1436+92.0199	68.3341' RT	PAVEMENT - EDGE
118	1912731.5687	2607779.5131	800.2607	I39_D2	1436+92.0446	68.3747' RT	PAVEMENT EDGE RIGHT
119	1912787.7916	2607771.7120	800.1741	I39_D2	1437+49.1242	68.5369' RT	PAVEMENT - EDGE
120	1912787.5832	2607770.4543	800.2298	I39_D2	1437+49.0911	67.2624' RT	PAVEMENT STATION NUMBER
121	1912846.0385	2607763.8882	799.9919	I39_D2	1438+08.2244	68.6824' RT	PAVEMENT - EDGE
122	1912892.1027	2607757.3687	800.0107	I39_D2	1438+55.0067	68.2678' RT	PAVEMENT - EDGE
123	1912928.5288	2607752.6393	799.9102	I39_D2	1438+91.9439	68.2371' RT	PAVEMENT - EDGE
124	1912975.7199	2607746.6428	799.7876	I39_D2	1439+39.7801	68.1626' RT	PAVEMENT - EDGE
125	1912983.2082	2607745.6742	799.7892	I39_D2	1439+47.3728	68.1168' RT	PAVEMENT - EDGE
126	1913033.3135	2607739.4063	799.6722	I39_D2	1439+98.1495	67.9018' RT	PAVEMENT - EDGE
127	1913033.1825	2607738.8234	799.6462	I39_D2	1439+98.0878	67.3075' RT	PAVEMENT STATION NUMBER
128	1913086.9232	2607733.4230	799.5139	I39_D2	1440+52.3920	68.1588' RT	PAVEMENT - EDGE

REFERENCE TIES

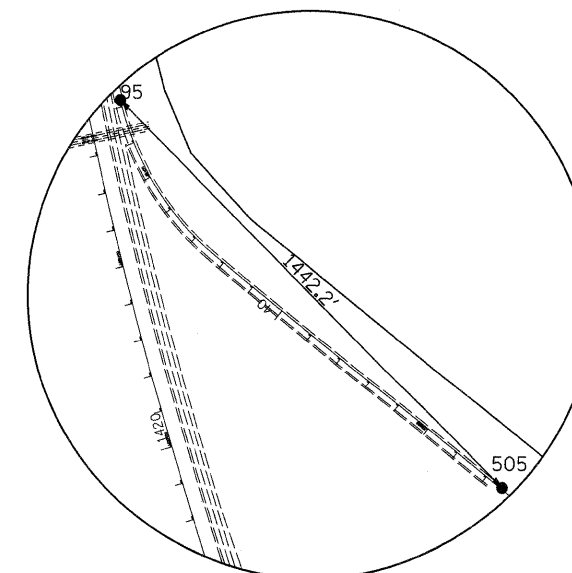
POINT	CHAIN	STATION	OFFSET	DESCRIPTION
500	I39_D2	1418+99.0222	2.2621' RT	MANHOLE LID, CENTER
501	I39_D2	1418+97.6654	22.367' LT	PIPE
502	I39_D2	1418+94.8033	23.3083' RT	PIPE
505	RAMP	32+49.4785	3.1524' RT	PAVEMENT STATION NUMBER
506	RAMP	32+85.0237	8.1673' RT	FENCE POST
507	RAMP	32+84.2113	22.1628' LT	FENCE POST
508	I39_D2	1442+01.3929	5.4661' RT	FOUNDATION, CORNER
509	I39_D2	1441+93.9814	5.1542' RT	FOUNDATION
510	I39_D2	1441+98.0915	2.7453' RT	MANHOLE



HORIZONTAL CONTROL
POINT No. 902153



HORIZONTAL CONTROL
POINT No. 99



HORIZONTAL CONTROL
POINT No. 505