

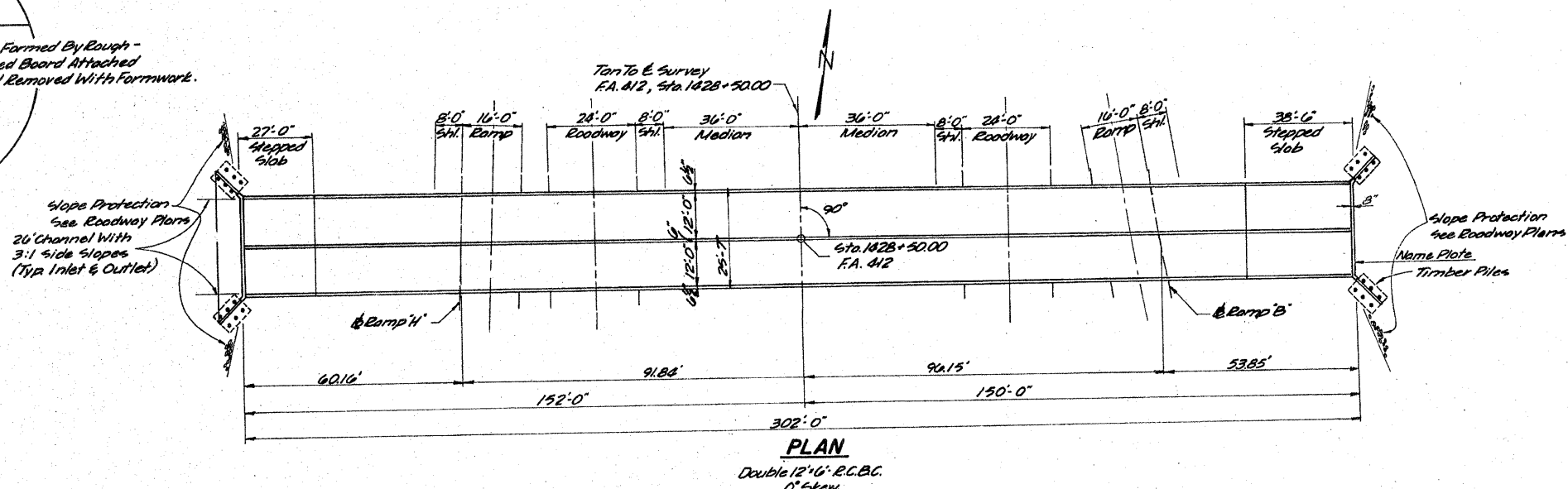
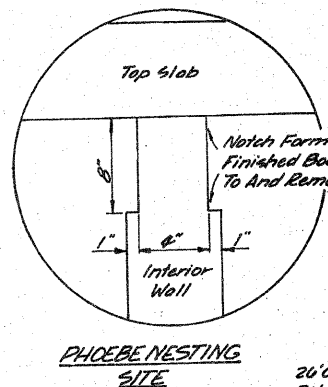
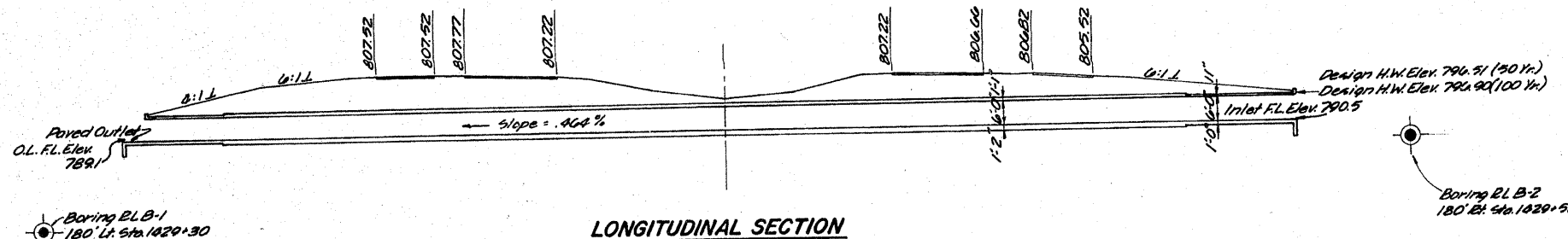
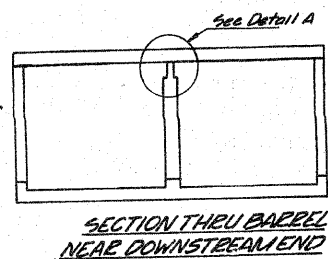
STATE OF ILLINOIS
DEPARTMENT OF TRANSPORTATION

ROUTE NO.	SEC.	COUNTY	SHEETS	NO.	SHEET NO.
FA 412	141-1A	OGLE	628	224	2 SHEETS
FED. ROAD DIST. NO. 7 ILLINOIS PROJECT					

B.M. #10 Iron Pin 240' Lt.
Sta. 1427+50 Elev. 791.964

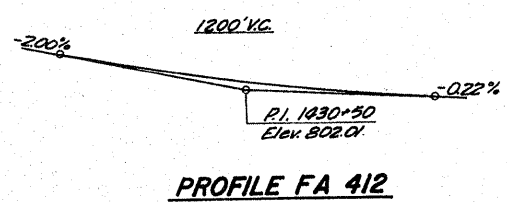
GENERAL NOTES

CLASS X CONCRETE SHALL BE USED THROUGHOUT.
AT LEAST SIX FEET OF BARREL SHALL BE POURED MONOLITHICALLY WITH WINGWALLS.
EXPOSED EDGES SHALL BE BEVELED 3/4".
FOR BACKFILLING @ EMBANKMENTS SEE STANDARD SPECIFICATIONS.
TILT HOOK OF α BARS, IF NECESSARY, TO OBTAIN 1 1/2" MINIMUM CLEARANCE AT TOP OF HOOK.
ALL BARS SHALL BE LAPPED 24 DIAMETERS UNLESS OTHERWISE SPECIFIED.
SEE THE SPECIAL PROVISIONS FOR BORING LOGS.



MAINLINE CURVE DATA

D	22° 37' 08" EX.
D	0° 28' 00"
E	12,277.70'
T	2,456.66'
L	4889.28'
E	203.37'
Se	0.023%



WATERWAY INFORMATION

Drainage Area	2050 Acres
Q ₂₀	910 CFS
Q ₁₀₀	1105 CFS
Required Opening	144 sq. ft.
Proposed Opening	144 sq. ft.
Created Head (50 Year)	0.35'
Created Head (100 Year)	1.0'

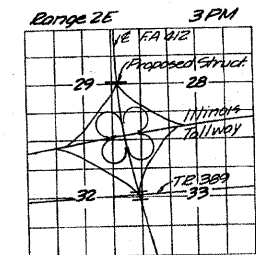
DESIGN STRESSES

f _c	20,000 psi
f _s	1000 psi Barrel
f _s	1000 psi Wings
V _c	90 psi Barrel
V _c	75 psi Footing
n	10 psi
Allow For 25% sq. ft. For Future W.G.	

LOADING HS20-44

Design Specs AASHTO 1973
As Applicable

APPROVED
FOR STRUCTURAL ADEQUACY ONLY
Carl E. Thompson
Engineer of Bridges & Traffic Structures



STATION 1428+50
BUILT 197 BY
STATE OF ILLINOIS
FA. RTE. 412 - SEC. 141-1
PROJECT FF-FFG-412-5(9)
LOADING HS 20

NAMEPLATE
See Std. 2113

BILL OF MATERIAL

ITEM	UNIT	TOTAL
Class 'X' Concrete	Cu Yds.	708.2
Reinforcement Bars	Lbs.	152,280
Name Plate	Each	1
Treated Timber Piles	Lin. Ft.	288
Riprap	sq. ft.	*

* See Roadway Plans

FOR INFORMATION ONLY

GENERAL PLAN & ELEVATION
PROJECT FA 412
FA RTE. 412 OVER DBL. 12x6' CULVERT
FA RTE. 412 - SEC. 141-1
OGLE COUNTY
STATION 1428+50.00

DESIGNED	WAI
CHECKED	HMW
DRAWN	WAI
CHECKED	HMW