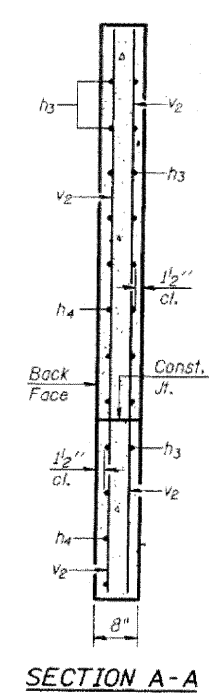
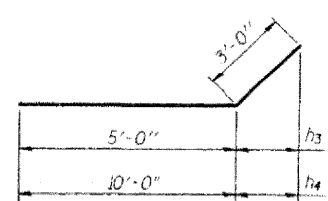
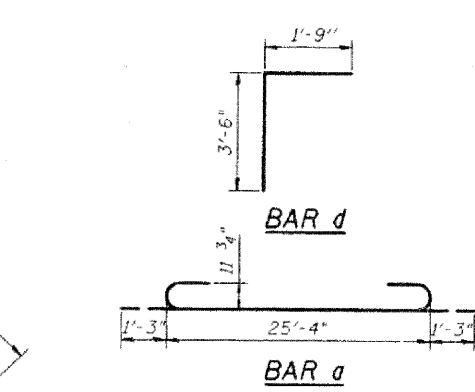
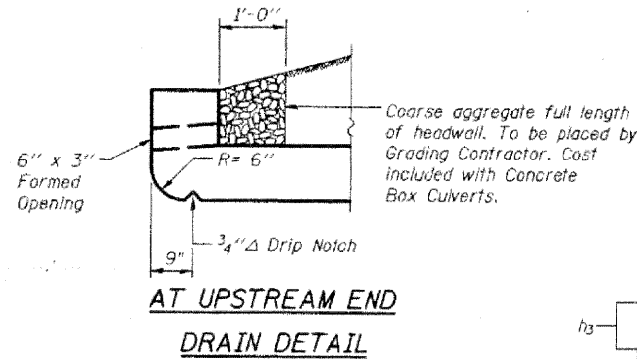
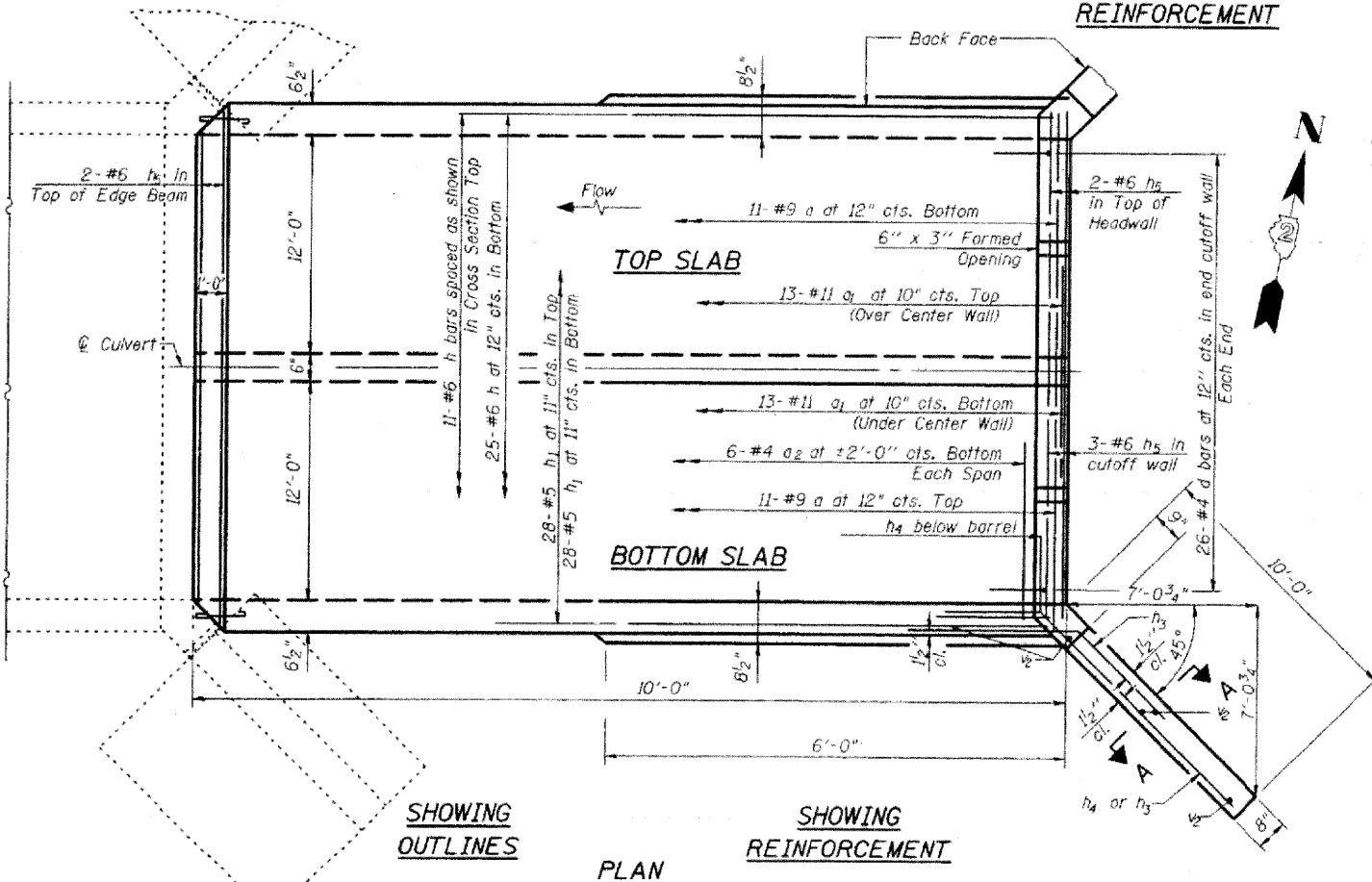
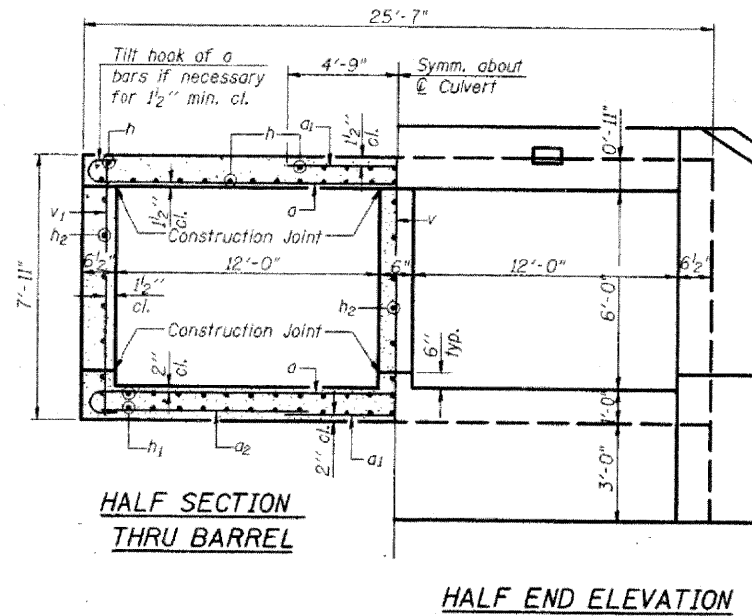
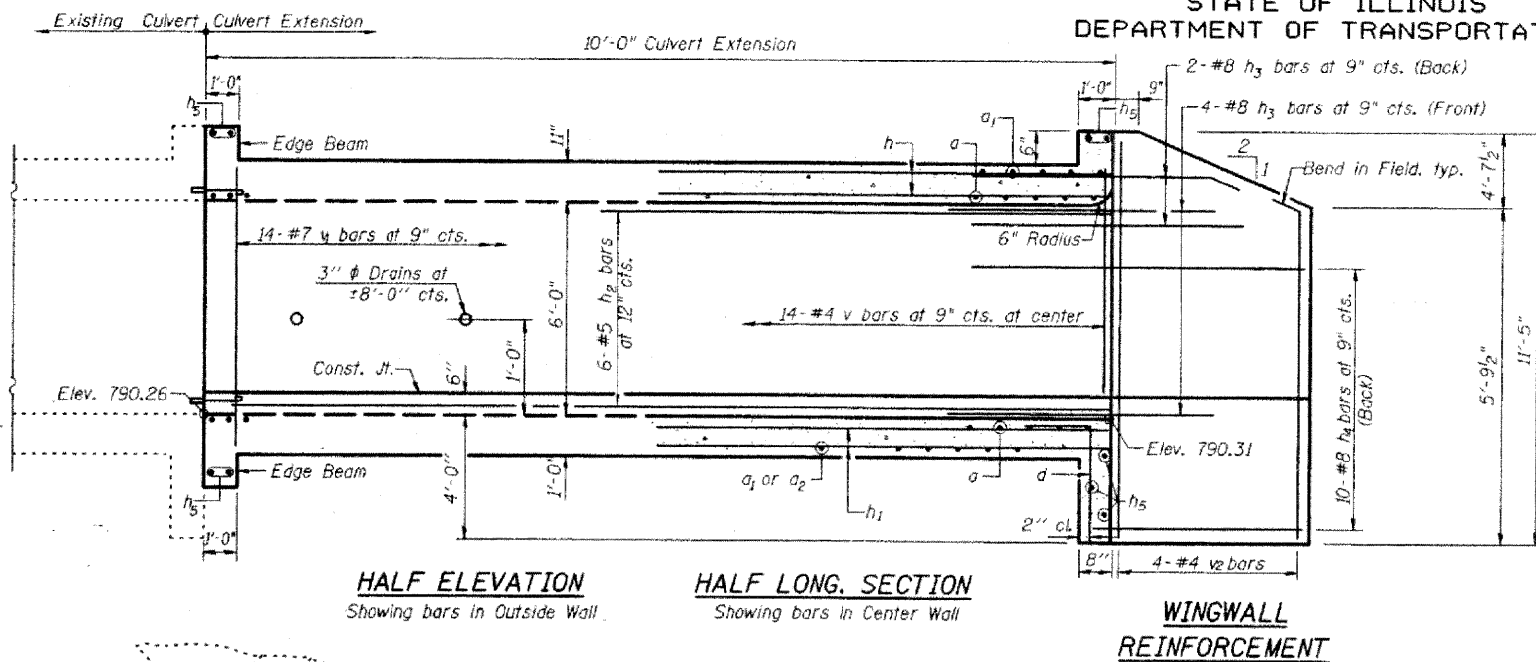


STATE OF ILLINOIS
DEPARTMENT OF TRANSPORTATION



BILL OF MATERIAL

Bar	No.	Size	Length	Shape
a	22	#9	27'-10"	U
a1	26	#11	9'-6"	—
a2	12	#4	9'-3"	—
d	26	#4	5'-3"	—
h	36	#6	9'-6"	—
h1	56	#5	9'-6"	—
h2	18	#5	9'-6"	—
h3	22	#8	8'-0"	—
h4	20	#8	13'-0"	—
h5	9	#6	26'-0"	—
v	14	#4	7'-6"	—
v1	28	#7	7'-6"	—
v2	10	#4	10'-0"	—
Concrete Box Culverts			Cu. Yd.	29.5
Reinforcement Bars			Pound	6,890

**CULVERT EXTENSION
PLAN AND ELEVATION
STRUCTURE NO. 071-2015**

DESIGNED	PRD
CHECKED	WAT
DRAWN	CJS
CHECKED	PRD

DLZ 85 W. Algonquin Rd. Ste. 220
Arlington Heights IL 60005

SHEET NO. 2	F.A. RTE. 412	SECTION (141-1) M-1	COUNTY OGLE	TOTAL SHEETS 82	SHEET NO. 32
SHEETS 4			CONTRACT NO. 64E60		
FED. ROAD DIST. NO. ILLINOIS FED. AID PROJECT					