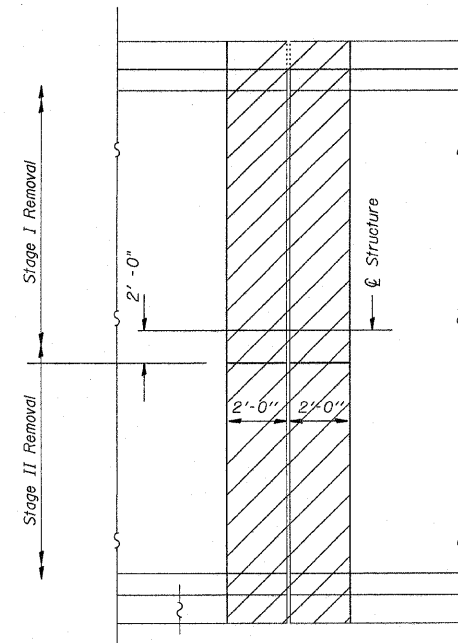
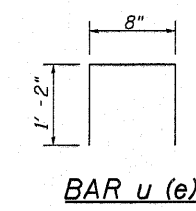


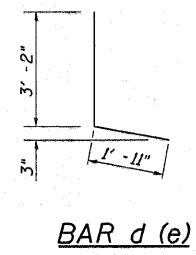
**EXISTING PARTIAL PLAN**  
(At Abutment)



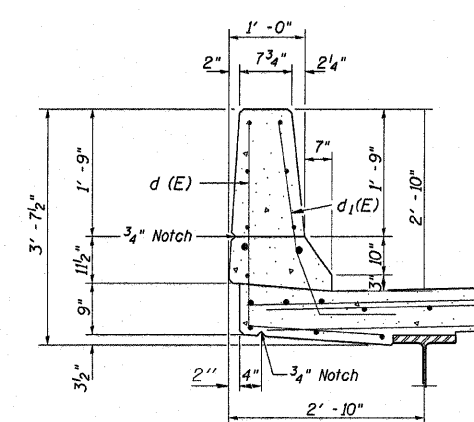
**EXISTING PARTIAL PLAN**  
(At Piers 1 & 5)



**BAR u (e)**

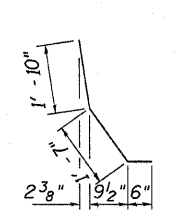


**BAR d (e)**

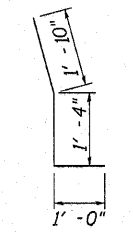


**TYPICAL SECTION THRU PARAPET**

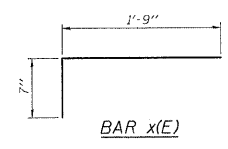
• = Existing Reinforcement



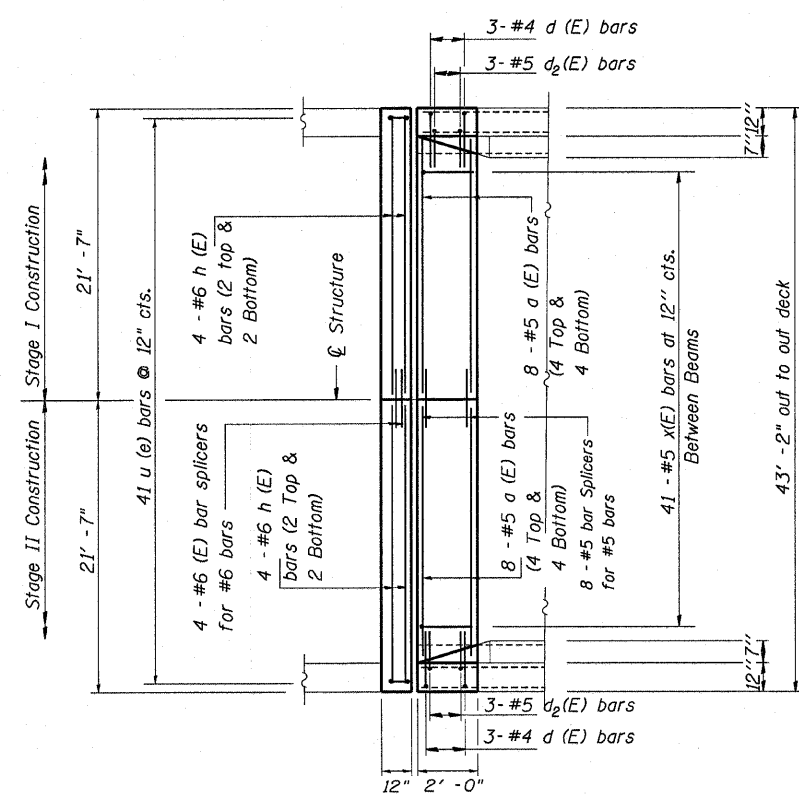
**BAR d1(e)**



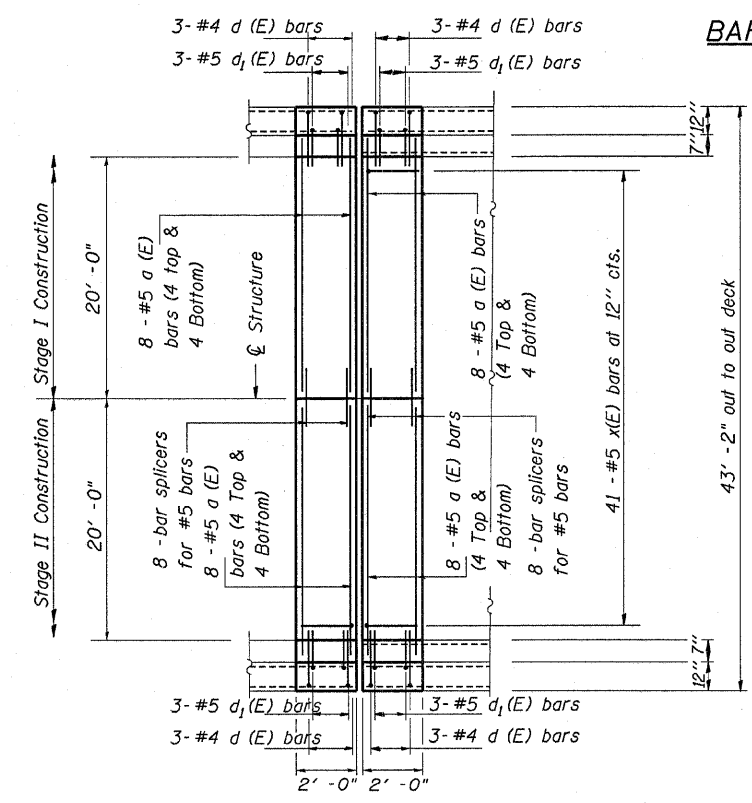
**BAR d2(e)**



**BAR x(E)**



**PROPOSED PARTIAL PLAN**  
(At Abutment)



**PROPOSED PARTIAL PLAN**  
(At Piers 1 & 5)

**Bill of Material**

BAR	NO.	SIZE	LENGTH	SHAPE
a (E)	96	5	20' - 0"	—
d (E)	36	4	5' - 1"	J
d1(E)	24	5	3' - 11"	J
d2(E)	12	5	4' - 2"	J
h (E)	8	6	21' - 4"	—
u (E)	82	5	3' - 0"	□
x (E)	82	5	2' - 4"	—
CONCRETE SUPERSTRUCTURE			CU YD	18.9
CONCRETE REMOVAL			CU YD	18.9
REINFORCEMENT BARS, EPOXY COATED			POUND	2990
PREFORMED JOINT STRIP SEAL			FOOT	170
BAR SPLICERS			EACH	38
REM REIN T B TERM T6			EACH	4

**JOINT DETAILS**  
US 30 OVER ELKHORN CREEK  
FAS 1197 (US 30)  
SECTION (110BR-1)M-1  
WHITESIDE COUNTY  
STRUCTURE NUMBER 098-0033