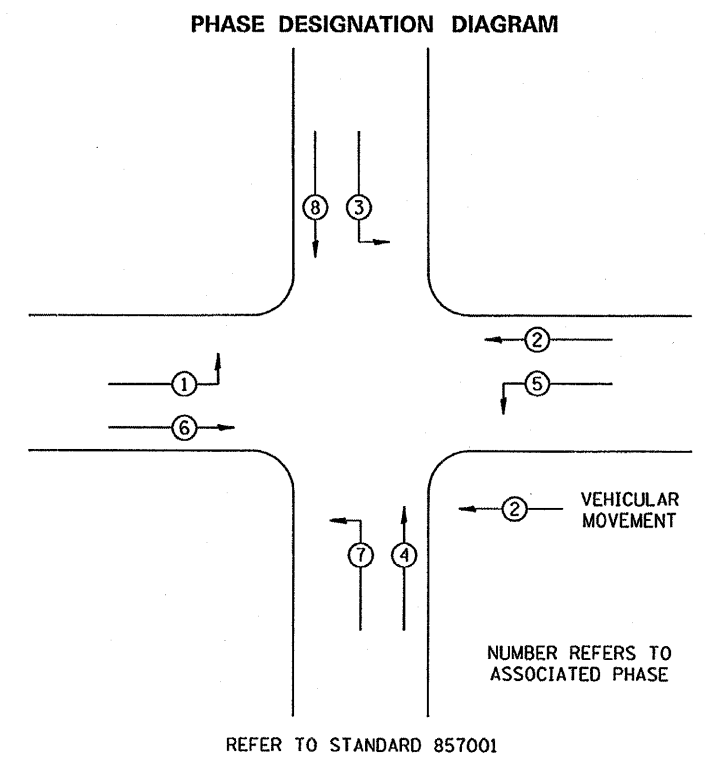
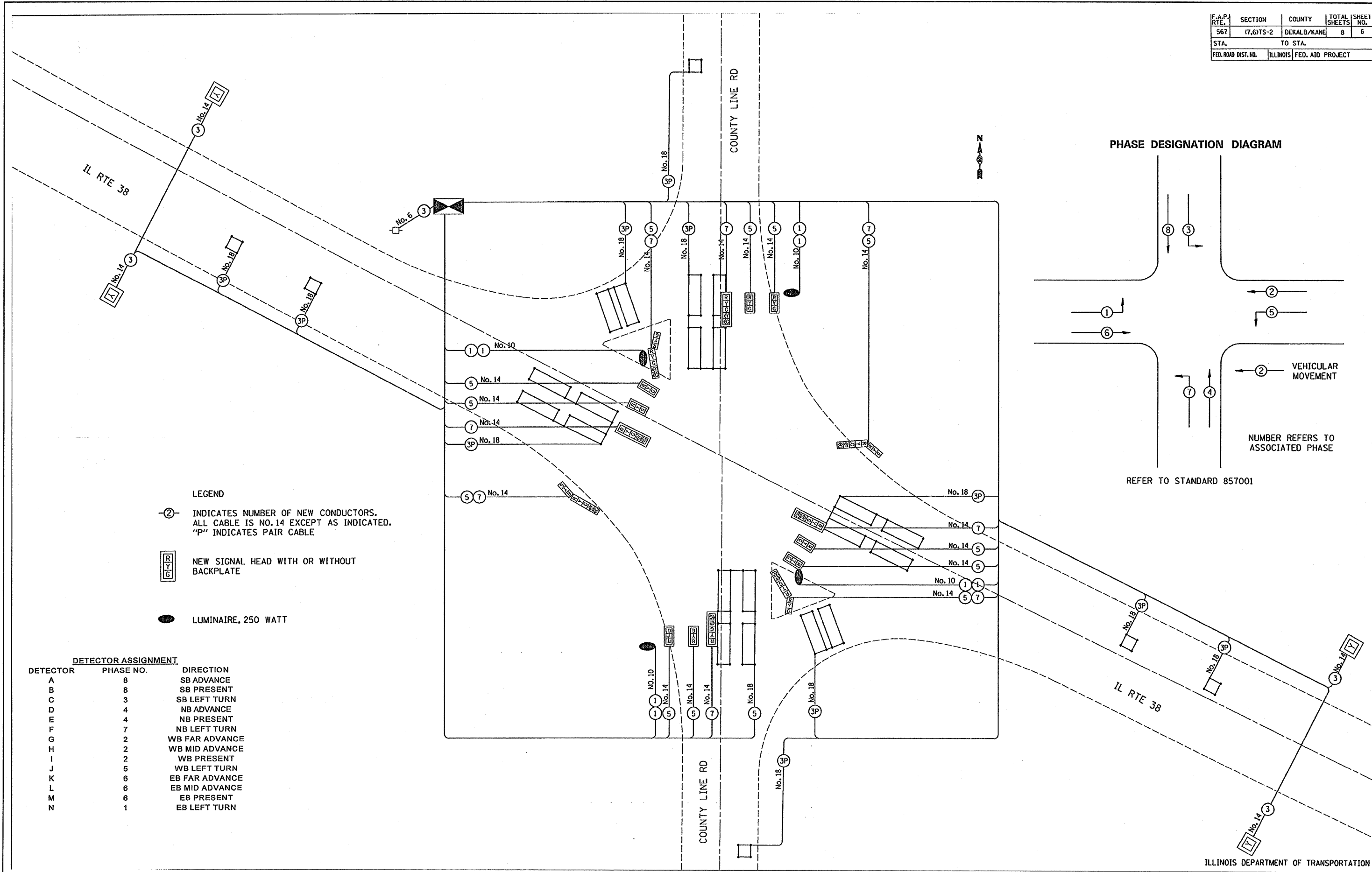


F.A.P. RTE.	SECTION	COUNTY	TOTAL SHEETS	SHEET NO.
567	(7,6)TS-2	DEKALB/KANE	8	6
STA.	TO STA.			
FED. ROAD DIST. NO.	ILLINOIS	FED. AID PROJECT		



- LEGEND**
- ② INDICATES NUMBER OF NEW CONDUCTORS. ALL CABLE IS NO. 14 EXCEPT AS INDICATED. "P" INDICATES PAIR CABLE
 - NEW SIGNAL HEAD WITH OR WITHOUT BACKPLATE
 - LUMINAIRE, 250 WATT

DETECTOR ASSIGNMENT

DETECTOR	PHASE NO.	DIRECTION
A	8	SB ADVANCE
B	8	SB PRESENT
C	3	SB LEFT TURN
D	4	NB ADVANCE
E	4	NB PRESENT
F	7	NB LEFT TURN
G	2	WB FAR ADVANCE
H	2	WB MID ADVANCE
I	2	WB PRESENT
J	5	WB LEFT TURN
K	6	EB FAR ADVANCE
L	6	EB MID ADVANCE
M	6	EB PRESENT
N	1	EB LEFT TURN

FILE NAME =	USER NAME = duncanbd	DESIGNED -	REVISED -
c:\pw_work\pwsdot\duncanbd\0184257\365745-shit-cover.dgn		DRAWN -	REVISED -
	PLOT SCALE = 50.0000' / IN.	CHECKED -	REVISED -
	PLOT DATE = Feb 13, 2009 - 11:17:14 AM	DATE -	REVISED -

**STATE OF ILLINOIS
DEPARTMENT OF TRANSPORTATION**

FOR INFORMATION ONLY

SCALE: SHEET NO. OF SHEETS STA. TO STA.

F.A.P. RTE.	SECTION	COUNTY	TOTAL SHEETS	SHEET NO.
567	(7,6)RS-2	DEKALB	30	26
CONTRACT NO. 66745				
ILLINOIS FED. AID PROJECT				

ILLINOIS DEPARTMENT OF TRANSPORTATION